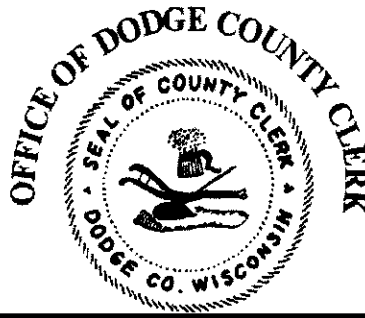


KAREN J. GIBSON
Dodge County Clerk
kgibson@co.dodge.wi.us

Administration Building
127 East Oak Street, Juneau WI 53039
920-386-3605 / Fax: 920-386-4292



BONNIE E. BUDDE
Chief Deputy
bbudde@co.dodge.wi.us

CHRISTINE M. KJORNES
Deputy
ckjornes@co.dodge.wi.us

November 4, 2014

Dear Supervisor:

The agenda and resolutions for next week's Annual County Board Budget Session are included with this letter. Please bring the budget book you received at last month's meeting to the November meeting.

The **Budget Hearing** will begin at 9:00 a.m. on Wednesday, November 12th. Chairman Kottke will declare the Public Hearing open at 9:00 a.m. and discussion on any items in or pertaining to the budget by the general public, or by any Board Members, will be allowed. At the close of the discussion and comments on the budget, the Chairman will close the Budget Hearing. Chairman Kottke has requested all motions to amend the budget in any way be made in writing and be presented during Mr. Mielke's presentation of the budget.

Immunization Shots will be given by the Public Health Department before the Board meeting beginning at 8:00 a.m. in Meeting Room 4C – Fourth Floor of the Administration Building. There is no fasting or doctor's permission necessary. You will be asked to fill out a short form. If you have questions about immunization shots, please contact the Public Health Department at 920-386-3670.

Please feel free to contact Chairman Kottke or myself with any questions you may have regarding the November 12th County Board Meeting.

Sincerely,

Karen J. Gibson

Karen J. Gibson
Dodge County Clerk

Enclosures

Notice of Meeting of the Dodge County Board of Supervisors

There will be a meeting of the Dodge County Board of Supervisors on **Wednesday, November 12, 2014**, at **9:00 A.M.** in the County Board Room located on the fourth floor of the Administration Building, located at 127 East Oak Street, Juneau, Wisconsin.

The Agenda for the Meeting is as follows:

Call to Order by Russell Kottke, County Board Chairman

Pledge of Allegiance

Roll Call

Approve Minutes from October 21, 2014, County Board Session

Communications on File

Special Orders of Business

Public Hearing – Resolution 14-41 – 2015 Dodge County Budget

Confirm Appointment made by County Administrator

1. Re-appoint Dennis Johnson as a member of the Veterans Service Commission for a three year term, commencing on December 1, 2014 to December 1, 2017, both inclusive.

Donna Maly, Chairman, Information Technology Committee

Ruth Otto, Director, Information Technology

Kronos Project Overview

Resolutions on File

14-42 County Aid Bridge Construction – Highway Committee.

14-43 Approve Sixth Amendment to County Administrator Employment Agreement – Executive Committee.

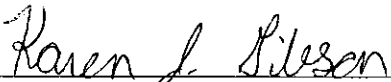
14-44 Support District Attorney Request for Additional Prosecutors - Law Enforcement Committee.

Old Business

Resolution 14-41 – 2015 Dodge County Budget – Report from Finance Committee.

Set Next Meeting Date & Time

Recess


Karen J. Gibson, Dodge County Clerk

Any person wishing to attend who, because of a disability, requires special accommodation, should contact the Dodge County Clerk's Office at (920) 386-3600, at least 24 hours before the scheduled meeting time so appropriate arrangements can be made. The building entrance which is accessible by a person with a disability is located on the east side of the building off of Miller Street.

Any invocation that may be offered before the official start of the Board meeting shall be the voluntary offering of a private citizen, to and for the benefit of the Board. The views or beliefs expressed by the invocation speaker have not been previously reviewed or approved by the Board, and the Board does not endorse the religious beliefs or views of this, or any other speaker.

RECEIVED
IN THE OFFICE OF
COUNTY CLERK
NOV 04 2014
DODGE COUNTY, WIS.
10:30 AM BAB

Dodge County Board of Supervisors
October 21, 2014 – 7:00 p.m.
Administration Building - Juneau, Wisconsin

The October session of the Dodge County Board of Supervisors was called to order by Chairman Russell Kottke at 7:00 p.m.

The Board rose to say the Pledge of Allegiance.

Roll call was taken by the Clerk with all Supervisors being in attendance with the exception of Supervisor Berres. Supervisor Berres arrived at 7:14 p.m.

A motion was made by Supervisor Gohr and seconded by Supervisor Nickel to approve the minutes of the September 16, 2014, session of the County Board meeting as recorded, and dispense with the reading of the minutes. The motion passed by acclamation with no negative votes cast, and was so ordered by the Chairman.

Communications on File

Karen J. Gibson, County Clerk, read a letter from the Fox Lake Preservation Organization, the Lake Sinissippi Improvement District, and the Dodge County Lakes Group in support of Dodge County Resolution 14-39 regarding on-farm manure management systems. The Chairman ordered these to be placed on file.

Special Orders of Business

Chairman Kottke called upon Supervisor Johnson, Chairman, Highway Committee who called upon Mary Gasper, Airport Manager. Ms. Gasper presented on airport operations, services provided, and community involvement. Question by Supervisor Gohr answered by Ms. Gasper. Comment by Supervisor Caine.

Chairman Kottke then called upon Supervisor Nelson, Chairman, Land Conservation Committee who called upon Marc Bethke, Land Conservationist and Jody Langfeldt, Public Health Officer. Mr. Bethke presented on types of manure storage, methods of application, incidents, and manure management training. Ms. Langfeldt presented on waterborne diseases and the importance of clean water. Questions by Supervisors Grebel, Schmidt and Berres answered by Mr. Bethke and Supervisor Nelson. Comments by Supervisors Derr, Berres, Gohr, Frohling and Miller.

The following Bridge Memorials, Resolutions, Reports, Ordinance and Claim were read by the Clerk and acted upon by the Board:

Bridge Memorials - Highway Committee. A motion for adoption was made by Supervisor Johnson and seconded by Supervisor Caine. The vote was cast with all 32 ayes and 1 absent, thereby adopting the Bridge Memorials.

Ayes: Pollesch, Kottke, M. Bobholz, Nelson, Marsik, Grebel, Greshay, Kriewald, Schaefer, Uttke, Adelmeyer, Muche, Gohr, Johnson, Schraufnagel, Bischoff, Caine, Behl, Berres, Houchin, Roesch, Frohling, Schmidt, Duchac, Nickel, Hoelzel, Maly, Fabisch, Miller, Stousland, Derr, Mattson. Total 32.

Absent: J. Bobholz. Total 1.

Resolution No. 14-39 Urge State of Wisconsin to Form a State-Wide Task Force Regarding On-Farm Liquid Manure Management Systems – Land Conservation Committee. A motion for adoption was made by Supervisor Nelson and seconded by Supervisor Adelmeyer. Supervisor Frohling made a motion to amend the So, Now, Therefore, Be it Resolved paragraph to add “from the following list but not limited to said list”, before the words Wisconsin State Legislature, and add a new number one to read “Consider all possible groundwater and well contamination sources and make recommendations to alleviate such sources”, and renumber original number one to number two and original number two to number three. Supervisor Berres seconded the motion. Question by Supervisor Nickel answered by Supervisors Nelson and Frohling. The vote was cast on the amendment with all voting in the affirmative, thereby adopting the amendment.

The vote was then cast on the resolution as amended with 32 ayes and 1 no, thereby adopting the resolution as amended.

Ayes: Pollesch, Kottke, M. Bobholz, Nelson, J. Bobholz, Marsik, Grebel, Greshay, Kriewald, Schaefer, Uttke, Adelmeyer, Muche, Gohr, Johnson, Schraufnagel, Bischoff, Behl, Berres, Houchin, Roesch, Frohling, Schmidt, Duchac, Nickel, Hoelzel, Maly, Fabisch, Miller, Stousland, Derr, Mattson. Total 32.

No: Caine. Total 1.

Resolution No. 14-40 Commemorate the 100th Anniversary of Wisconsin 4-H Youth Development – UW-Extension Education Committee. A motion for adoption was made by Supervisor Behl and seconded by Supervisor Grebel. The vote was cast with all voting in the affirmative, thereby adopting the Resolution. Chairman Kottke introduced Marie Witzel, Dodge County 4-H and Youth Development Agent, and two youth who were in attendance.

Resolution No. 14-41 Dodge County Budget for 2015 – County Administrator Mielke and County Board Chairman Kottke. Chairman Kottke referred the 2015 Budget to the Finance Committee. Chairman Kottke mentioned that the 2015 Budget Book would be handed out after the meeting.

Report No. 1 Ordinance No. 930 – Amend Land Use Code – Richard and Peggy Dean Property – Section 8, Town of Lomira – Planning, Development and Parks Committee. A motion for adoption was made by Supervisor Behl and seconded by Supervisor Johnson. The vote was cast with all voting in the affirmative, thereby adopting the Report and Ordinance.

Report No. 2 Ordinance No. 931 – Amend Land Use Code – Town of Lebanon Zoning Map – Planning, Development and Parks Committee. A motion for adoption was made by Supervisor Schaefer and seconded by Supervisor Behl. The vote was cast with all voting in the affirmative, thereby adopting the Report and Ordinance.

Ordinance No. 1 Ordinance No. 932 – An Ordinance to Restrict and Regulate Access Onto County Highways – Highway Committee. A motion for adoption was made by Supervisor Muche and seconded by Supervisor Miller. Comments by Supervisors Grebel, Berres and Johnson. The vote was cast with 29 ayes and 4 noes, thereby adopting the Ordinance.

Ayes: Pollesch, Kottke, Nelson, J. Bobholz, Marsik, Grebel, Greshay, Kriewald, Schaefer, Adelmeyer, Muche, Gohr, Johnson, Schraufnagel, Bischoff, Caine, Behl, Roesch, Frohling, Schmidt, Duchac, Nickel, Hoelzel, Maly, Fabisch, Miller, Stousland, Derr, Mattson. Total 29.

Noes: M. Bobholz, Uttke, Berres, Houchin. Total 4.

Claim on File A claim by Wisconsin Bell Inc., D/B/A AT&T – Wisconsin (AT&T), for money damages in the amount of \$2,436.74 for costs to repair a telephone pedestal and cable (pedestal and cable) and for money damages in the amount of \$278.00 for loss of service was received in the Dodge County Highway Department on September 22, 2014. AT&T alleges that the claim arises from an incident that occurred on July 1, 2014, near N11121 STH 26, in the Town of Chester, Dodge County, Wisconsin. AT&T alleges that while an employee of the Dodge County Highway Department was operating a mower, the mower struck a pedestal and cable, thereby damaged the pedestal and cable, AT&T expended \$2,436.74 to repair the pedestal and cable, and AT&T experienced a loss of service as a result of the damage to the pedestal and cable, to its detriment in the amount of \$278.00. The Executive Committee recommended the Claim be disallowed. A motion to approve the disallowance was made by Supervisor Frohling and seconded by Supervisor Schraufnagel. The vote was cast with 30 ayes and 3 noes, thereby disallowing the claim.

Ayes: Pollesch, Kottke, Nelson, J. Bobholz, Marsik, Grebel, Greshay, Kriewald, Schaefer, Uttke, Adelmeyer, Gohr, Johnson, Schraufnagel, Bischoff, Caine, Behl, Houchin, Roesch, Frohling, Schmidt, Duchac, Nickel, Hoelzel, Maly, Fabisch, Miller, Stousland, Derr, Mattson. Total 30.

Noes: M. Bobholz, Muche, Berres. Total 3.

The Clerk noted the following had been placed on the Supervisor's desks: a Wisconsin Aviation Folder, Memo from County Administrator, James Mielke, WCA Services Packet, Clearview Annual Holiday Bazaar Invitation, and Aging and Disability Resource Center Newsletter. The Chairman ordered these be placed on file.

At 8:41 p.m. Supervisor Maly made a motion to recess until Wednesday, November 12, 2014 at 9:00 a.m. Supervisor Mattson seconded the motion. The motion passed by acclamation, with no negative votes cast, and was so ordered by the Chairman.

Chairman Kottke reminded the Board of the Special Finance Committee Budget Meeting to be held on October 28, 2014 at 6:00 p.m. in the Administration Building.

Disclaimer: The above minutes may be approved, amended or corrected at the next meeting.

RESOLUTION NO. 14-42

COUNTY AID BRIDGE CONSTRUCTION UNDER SECTION 82.08,
OF THE WISCONSIN STATUTES, DODGE COUNTY, WISCONSIN

TO THE HONORABLE BOARD OF SUPERVISORS OF DODGE COUNTY, WISCONSIN

MEMBERS:

WHEREAS, the various Towns hereinafter named have filed petitions for County Aid in the construction of bridges under Section 82.08 of the *Wisconsin Statutes*, said petitions are hereby granted, and the County's share is appropriated as follows:

TOWN	ROAD	NAME OF BRIDGE	CAB NO.	AMOUNT BY LOCAL UNIT	AMOUNT OF COUNTY AID GRANTED
1. Clyman	Welsh	Heiling	332-01-02	796.49	796.40
2. Westford	Hawk	Minnig	332-01-03	828.39	828.00
3. Beaver Dam	S. Crystal Lake	Slager	332-11-08	39,505.54	39,505.33
4. Oak Grove	St. Helena	Nehls	332-13-05	3630.48	3630.47
5. Hustisford	Elmwood	Pieper	332-13-06	580.00	579.97
6. Beaver Dam	Shaw Hill	Goeller	332-13-07	112.47	112.46
7. Clyman	Gubin	Peterman	332-14-01	3,116.54	3,116.53
8. Emmet	Apple	Rimm	332-14-02	1,688.96	1,688.95
9. Hubbard	Perch	Maas	332-14-03	1,405.71	1,405.69
				<u>\$51,664.58</u>	<u>\$51,664.00</u>

WHEREAS, adoption of this Resolution will amend the Dodge County Administrator's proposed 2015 Dodge County Budget.

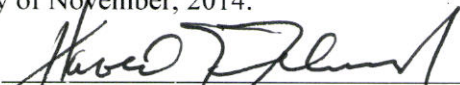
All of which is respectfully submitted this 12th day of November, 2014.

Vote on Foregoing Resolution

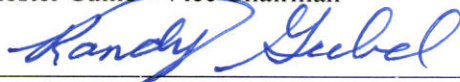
Ayes _____ Noes _____ Absent _____

RESOLUTION


COUNTY CLERK


Harold J. Johnson - Chairman

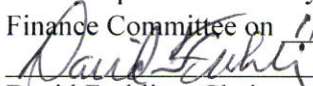

Chester Caine - Vice Chairman


Randy Grebel - Secretary


Jeff Berres


William T. Muche

DODGE COUNTY HIGHWAY COMMITTEE

<p>FISCAL NOTE: Fiscal Impact on the adopted 2015 Budget: \$ <u>536.00</u></p> <p>Fiscal Impact reviewed by the Dodge County Finance Committee on <u>11/4/2014</u>  David Frohling, Chairman Dodge County Finance Committee</p>

2014 County Aid Bridge Program

Summary

Town	Bridge Name	Project #	Road Name	Remarks
Clyman	Heiling (UP)	332-01-02	Welsh Road	Bridge replacement over U.P.R.R.
Westford	Minnig (UP)	332-01-03	Hawk Road	Bridge replacement over U.P.R.R.
Beaver Dam	Slager	332-11-08	S. Crystal Lake Rd.	Replace failed box culvert
Oak Grove	Nehls	332-13-05	St. Helena Road	Extend existing pipe
Hustisford	Pieper	332-13-06	Elmwood Road	Install asphalt wedges
Beaver Dam	Goeller	332-13-07	Shaw Hill Road	Replace lag bolts on deck
Clyman	Peterman	332-14-01	Gubin Road	Replace failed pipe
Emmet	Rimm	332-14-02	Apple Road	Replace failed pipe
Hubbard	Maas	332-14-03	Perch Road	Install asphalt wedges

TO THE HONORABLE BOARD OF SUPERVISORS OF DODGE COUNTY, WISCONSIN MEMBERS,

WHEREAS, by means of Resolution No. 08-44, adopted by the Dodge County Board of Supervisors on August 19, 2008, the Dodge County Board of Supervisors appointed James E. Mielke as Dodge County Administrator, effective September 22, 2008, and approved, endorsed, and ratified a proposed *County Administrator Employment Agreement*, which was subsequently executed by Dodge County and James E. Mielke, and is dated August 26, 2008; and,

WHEREAS, the Dodge County Executive Committee, at its October 6, 2014, meeting, reviewed the annual compensation for the County Administrator as set forth in the *County Administrator Employment Agreement, Dated August 26, 2008*; and,

WHEREAS, the Executive Committee recommends that the *County Administrator Employment Agreement, Dated August 26, 2008*, be amended as follows:

1. That the provision within Section 8 of the Contract entitled "SALARY" be amended to provide as follows:

"**SALARY.** Employer shall pay Employee a bi-weekly salary equivalent to an annual amount of \$98,000 divided by 26 bi-weekly pay periods, beginning on Employee's first date of employment and continuing through the remaining pay periods of 2008, 2009, 2010, 2011, and 2012. Commencing with calendar year 2013, the Employer shall pay Employee a bi-weekly salary equivalent to an annual amount of \$101,200 divided by the number of bi-weekly paydays occurring within the calendar year. Commencing with calendar year 2014, the Employer shall pay Employee a bi-weekly salary equivalent to an annual amount of \$103,730 divided by the number of bi-weekly paydays occurring within the calendar year. Commencing with calendar year 2015, the Employer shall pay Employee a bi-weekly salary equivalent to an annual amount of \$106,323 divided by the number of bi-weekly paydays occurring within the calendar year. Thereafter, the salary of the Employee shall be recommended to the County Board by the Executive Committee, with consideration given to Employee's performance."

WHEREAS, the requested amendment has been set forth in writing in a document entitled *Sixth Amendment To County Administrator Employment Agreement, Dated August 26, 2008*, a copy of which has been attached hereto; and,

WHEREAS, the Executive Committee recommends that the Dodge County Board of supervisors approve the *Sixth Amendment To County Administrator Employment Agreement, Dated August 26, 2008*, and authorize and direct Russell Kottke, Chairman of the Dodge County Board of Supervisors, to execute the *Sixth Amendment To County Administrator Employment Agreement, Dated August 26, 2008*, on behalf of Dodge County;

SO, NOW, THEREFORE, BE IT RESOLVED, that the Dodge County Board of Supervisors hereby approves the *Sixth Amendment To County Administrator Employment Agreement, Dated August 26, 2008*, a copy of which has been attached hereto, and hereby authorizes and directs Russell Kottke, Chairman of the Dodge County Board of Supervisors, to execute the *Sixth Amendment To County Administrator Employment Agreement, Dated August 26, 2008*, on behalf of Dodge County.

All of which is respectfully submitted this 12th day of November, 2014.

Dodge County Executive Committee:



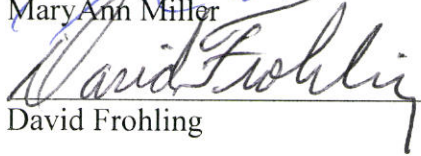
Russell Kottke



Donna Maly



Mary Ann Miller

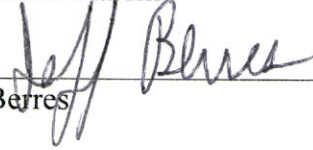


David Frohling

Harold Johnson



Joseph M. Marsik



Jeff Barres

Sixth Amendment To County Administrator Employment Agreement Dated August 26, 2008

AGREEMENT made this 13th day of November, 2014, by and between Dodge County, a Wisconsin quasi-municipal corporation ("Employer" or "County"), and James E. Mielke ("Employee"). The Parties agree as follows:

This Agreement amends the County Administrator Employment Agreement ("Contract"), entered into by and between the Parties on August 26, 2008, as previously amended, and is an amendment to the Contract pursuant to Section 19 of said Contract, which provides that amendments to the Employment Agreement shall be as agreed from time to time and reduced to writing in the same fashion as the Employment Agreement.

The Parties further agree as follows:

That *Section 8 Salary and Benefits* of the *County Administrator Employment Agreement, dated August 26, 2008*, as amended (by the November 12, 2009 Amendment, the May 18, 2011 Second Amendment, the January 5, 2012 Third Amendment, the December 26, 2012 Fourth Amendment, and the December 19, 2013 Fifth Amendment to the County Administrator Employment Agreement Dated August 26, 2008) (the "Contract"), shall be amended as follows:

1. The provision within Section 8 of the Contract entitled "SALARY" shall be amended to provide as follows:

"SALARY. Employer shall pay Employee a bi-weekly salary equivalent to an annual amount of \$98,000 divided by 26 bi-weekly pay periods, beginning on Employee's first date of employment and continuing through the remaining pay periods of 2008, 2009, 2010, 2011, and 2012. Commencing with calendar year 2015, the Employer shall pay Employee a bi-weekly salary equivalent to an annual amount of \$106,323 divided by the number of bi-weekly paydays occurring within the calendar year. Thereafter, the salary of the Employee shall be recommended to the County Board by the Executive Committee, with consideration given to Employee's performance."

All other provisions of the *County Administrator Employment Agreement, dated August 26, 2008*, as previously amended, shall remain in full force and effect, and are not amended in any respect by this Sixth Amendment.

EMPLOYER:

DODGE COUNTY

Russell Kottke, Chairman
Dodge County Board of Supervisors

Dated: November 13, 2014

ATTEST:

Kelly L. Lepple

APPROVED AS TO FORM:



John F. Corey, Corporation Counsel

Dated: October 6, 2014

EMPLOYEE:

JAMES E. MIELKE

James E. Mielke

Dated: November 13, 2014

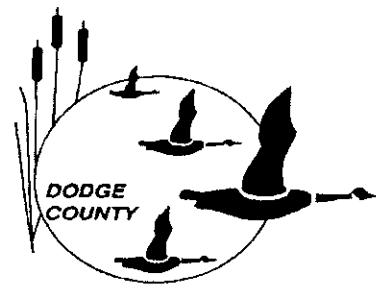
ATTEST:

Kelly L. Lepple

OFFICE OF THE DISTRICT ATTORNEY

Kurt F. Klomberg, District Attorney

Dodge County Justice Facility • 3rd Floor • 210 W. Center Street • Juneau, Wisconsin 53039
(920) 386-3610 • Fax: (920) 386-3623 • Website: www.co.dodge.wi.us/da



MEMORANDUM

TO: Dodge County Board of Supervisors

FROM: Kurt F. Klomberg – District Attorney

DATE: 11/03/2014

RE: Resolution in support of new State-funded ADA positions

Please refer to Resolution 14-44. This memorandum is offered to accompany the resolution in support of new Assistant District Attorney requests for the 2015-17 biannual state budget.

Since the Assistant District Attorneys (ADA) were moved from County to State service on January 1, 1990, there has not been a single increase in prosecutorial resources in Dodge County. This means that for nearly 25 years there has been no increase in State prosecutor staffing in Dodge County.

ADAs are State employees and all salary and benefits are paid out of the State budget. Therefore, any new ADA positions need to be authorized by the State Legislature and approved by the Governor. The proposed resolution is requested to encourage the authorization for new ADA positions in Dodge County.

The County does not incur any direct costs if ADA's are approved by the State. The information technology support package for an individual ADA is also provided as a part of the State budget. The County can incur indirect costs in support staff expenses and office space. However, it is anticipated that this request will have no such indirect costs to the county.

When Dodge County built the current District Attorney Office space in the Justice Facility, vacant offices (complete with IT hook-ups and working telephones) were included for future expansion. The District Attorney's Office has space for three additional ADA's. Likewise, no additional support staff will be required as the current case management system will be able to absorb the two requested ADA's without a need for additional clerical support staff.

Attached to this document are excerpts from the State Budget request for these positions;

- 1) P-1 – Current organizational chart for Dodge County District Attorney.
- 2) P-2 – Proposed organizational chart for Dodge County District Attorney (2 new ADAs)
- 3) First P-4 – Justification for Branch 2 ADA
- 4) Second P-4 – Justification for TAD and substance abuse crime ADA

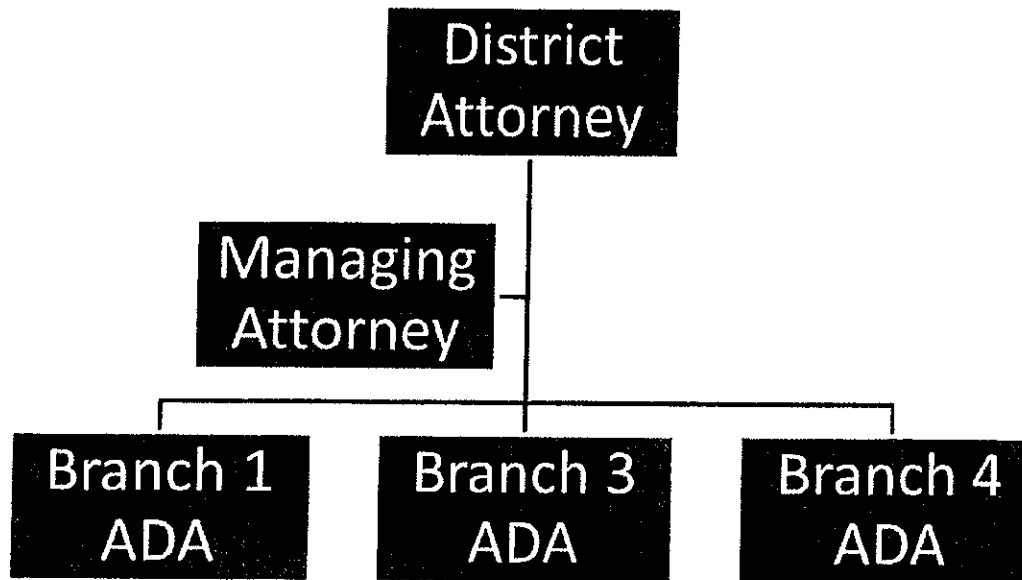
Assistant District Attorneys
Gilbert G. Thompson
Yolanda J. Tienstra
James T. Sempf

Managing Attorney
Robert G. Barrington

Victim/Witness Coordinators
Peggy Novak
Cayla Her

P-1 (2 pages)

Current Organizational Chart Dodge County District Attorney



District Attorney is responsible for office oversight and is direct supervisor to all subordinate attorneys. In addition District Attorney is responsible for a ½ general prosecution case load in Branch 2 of the circuit court and all cases involving drug sales, homicide, arson, battery to law enforcement, and complex vehicle crashes. The District Attorney is also responsible for inter-agency coordination, inter-government coordination, public information and coordination with non-government organizations for community public safety programs.

The Managing Attorney is responsible for support staff direct management, all internal administrative matters and interface with county administrative offices and processes.

P-1 Continued

Because of the Dodge County District Attorney's Office being a paperless office and being the pilot county for criminal e-filing, the Managing Attorney also is responsible for coordinating the progression of our electronic systems and policies. Also the Managing Attorney is responsible for ½ of a general case load in Branch 2 of the circuit court and all large-dollar embezzlement cases, extraditions, and public integrity cases.

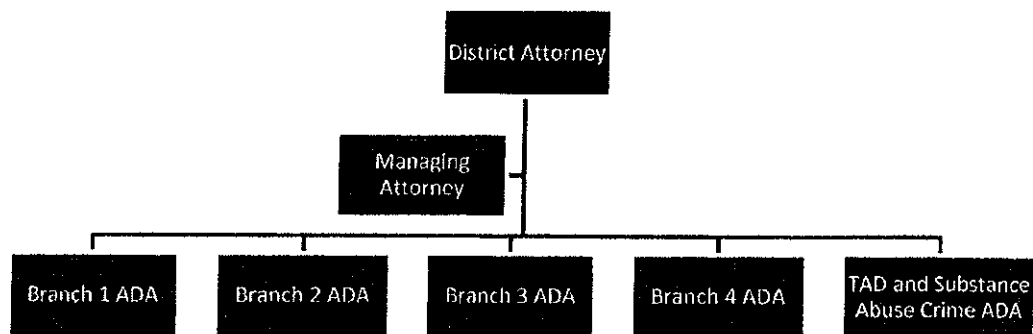
The Branch 1 ADA is responsible for a full general caseload in Branch 1 of the circuit court and all cases of child sexual assault.

The Branch 3 ADA is responsible for a full general caseload in Branch 3 of the circuit court and all cases involving felony-level repeated drunk drivers.

The Branch 4 ADA is responsible for a full general caseload in Branch 4 of the circuit court and all cases of adult-victim sexual assault and felony-level domestic abuse.

P2 (2 pages)

Proposed Organizational Chart Dodge County District Attorney



District Attorney is responsible for office oversight and is direct supervisor to all subordinate attorneys. In addition District Attorney is responsible for all cases involving drug sales, homicide, arson, battery to law enforcement, and complex vehicle crashes. The District Attorney is also responsible for inter-agency coordination, inter-government coordination, public information and coordination with non-government organizations for community public safety programs.

The Managing Attorney is responsible for support staff direct management, all internal administrative matters and interface with county administrative offices and processes. Because of the Dodge County District Attorney's Office being a paperless office and being the pilot county for criminal e-filing, the Managing Attorney also is responsible for coordinating the progression of our electronic systems and policies. Also the Managing Attorney is responsible for all large-dollar embezzlement cases, extraditions, and public integrity cases.

The Branch 1 ADA is responsible for a full general caseload in Branch 1 of the circuit court and all cases of child sexual assault and physical abuse of a child assigned to Branch 1 and 2.

P2 - continued

The Branch 2 ADA is responsible for a full general caseload in Branch 2 of the circuit court and all cases of adult-victim sexual assault and felony-level domestic abuse.

The Branch 3 ADA is responsible for a full general caseload in Branch 3 of the circuit court and all cases involving felony-level repeated drunk drivers.

The Branch 4 ADA is responsible for a full general caseload in Branch 4 of the circuit court and all cases of child sexual assault and physical abuse of a child assigned to Branch 3 and 4.

The TAD and Substance Abuse Crime ADA will be responsible for all cases assigned to the new Dodge County Treatment Alternatives and Diversion program and monitoring all cases assigned to the Dodge County Alcohol Court. In addition, the prosecutor will be responsible for all misdemeanor repeat drunk driving cases and all possession of drug cases.

Justification for Branch 2 ADA (attachment for first P-4)

Dodge County has 4 branches of circuit court. Currently the District Attorney and the County funded attorney are required to share a general caseload of misdemeanors and felonies in addition to their duties related to focused prosecutions (Drugs, Homicide, Embezzlement, etc.) Many of these cases have extensive litigation associated with them, which consumes a great deal of valuable time. Such litigation is often disruptive to the administrative duties of both position holders as well as their high-level case assignments (Drugs, Homicide, Embezzlement, etc.) progressing through the other branches of the circuit court. A dedicated Branch attorney would be able to be present in the single branch and such extensive litigation would easily be assimilated into their schedule due to the attorney being assigned to a single judge.

Furthermore, the Child Sexual Assault load would be able to be broken up between 2 attorneys as noted in the organizational chart in P-2. The office could also then be able to create a new focused prosecution area of physical abuse of a child (cases that are currently handled as general assignment). The current assignment of all cases of child sexual assault is necessary due to staffing and the need to develop high skill in the case type. However, the down-side is that assigning all child sexual assault cases to a single attorney is a significant time stressor on that attorney as the cases are very litigious. This is exacerbated by requiring the attorney to handle such cases across all four branches. The child sexual assault attorney is also placed in extreme psychological stress due to the nature of the case type.

Under current staffing constraints there is no way to break up the case load without causing a negative effect on case management across the office. The additional ADA and subsequent breaking up of the child sexual assault load would also allow the addition of physical abuse of a child cases to the focused case load. The reduction in time stress due to splitting the case load would accommodate these important cases being handled by attorneys who can develop advanced experience in working with children in all forms of child abuse (physical and sexual).

Justification for The TAD and Substance Abuse Crime ADA (attachment for second P-4)

The TAD and Substance Abuse Crime ADA will be responsible for all cases assigned to the new Dodge County Treatment Alternatives and Diversion (TAD) program and monitoring all cases assigned to the Dodge County Alcohol Court. In addition, the prosecutor will be responsible for all misdemeanor repeat drunk driving cases and all possession of drug cases.

Dodge County has the largest OWI (operating while intoxicated) court in the State. In addition, the county has developed a new Treatment Alternatives and Diversion program to address defendants who have high level AODA treatment needs. The program will require additional oversight by the District Attorney's Office for its success.

Currently, offenders placed in the OWI court are not monitored by the District Attorney's Office after conviction as they progress through the treatment court. Ideally we would be able to provide prosecutorial input into the treatment court proceedings. Currently we have no ability to do so due to staffing.

This prosecution position will serve to provide the resources to monitor both these programs and provide necessary input to ensure success. Furthermore the prosecutor can be assigned to take over the cases that are most involved with substances abuse issues (misdemeanor OWI cases and drug possession cases). This would allow a better steering of appropriate defendants into the TAD program and into the alcohol court. Determining who is most appropriate for these programs before a person is simply assigned to the program is important to ensure that the limited resources of these programs are not being used on defendants that will receive little benefit.

In addition the taking over of all misdemeanor OWI and drug possession cases will have the added benefit of caseload relief to the branch attorneys. Misdemeanor OWI and drug possession cases are general assignment cases currently handled by all branch attorneys.

RESOLUTION NO. 14-44

Supporting District Attorney's Request for Additional Prosecutors

TO THE HONORABLE BOARD OF SUPERVISORS OF DODGE COUNTY, WISCONSIN MEMBERS,

WHEREAS, Dodge County currently is allotted 4.0 full-time equivalent prosecutor positions including the District Attorney position which cover all criminal, traffic, and juvenile cases in Dodge County; and,

WHEREAS, the national standard for prosecutor staffing, although subject to some variables from jurisdiction to jurisdiction, indicates that any jurisdiction having only one prosecutor per 10,000 population is in serious danger of case mismanagement, inadvertent malpractice, and/or the inability to provide each case with the required attention, all of which can result in justice not being done, and Dodge County currently has one prosecutor per 22,000 population; and,


WHEREAS, the Legislative Audit Bureau which undertakes a similar prosecutor/caseload analysis has found that Dodge County needs an additional 1.36 prosecutors; and,

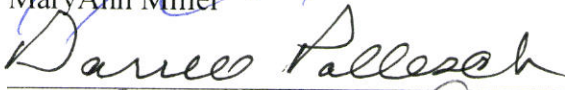
WHEREAS, the District Attorney, in submitting his state budget request for 2015/2017, has applied for funding for an additional two (2) prosecutors;

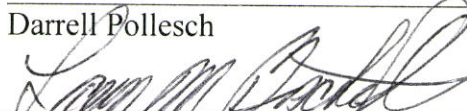
SO, NOW, THEREFORE, BE IT RESOLVED, that the Dodge County Board of Supervisors hereby supports the request by the Dodge County District Attorney for additional prosecutorial staff and hereby authorizes and directs the Dodge County Clerk send copies of this Resolution to the Governor, state and federal legislative representatives having constituencies in Dodge County, and such other public officials that the District Attorney may deem appropriate.

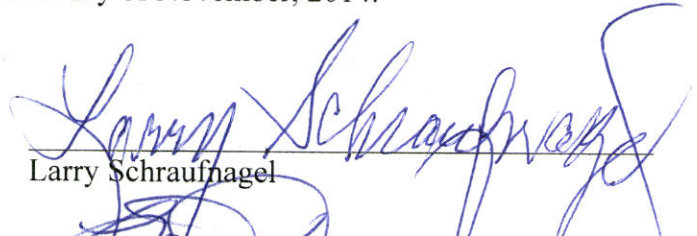
All of which is respectfully submitted this 12th day of November, 2014.

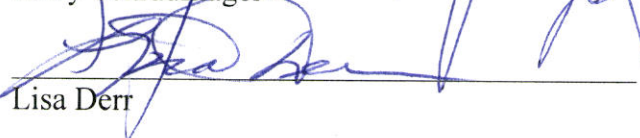
Dodge County Law Enforcement Committee:

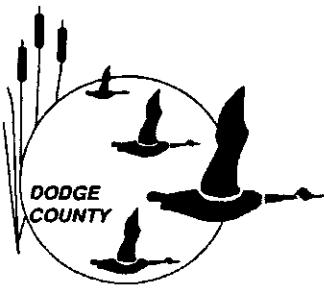

Mary Ann Miller


Darrell Pollesch


Larry Bischoff


Larry Schraufnagel


Lisa Derr



The Finance Committee

Of the Dodge County Board of Supervisors

127 East Oak Street • Juneau WI • 53039-1329 • (920) 386-3520 • Fax: (920) 386-3545

REPORT TO RESOLUTION 14-41

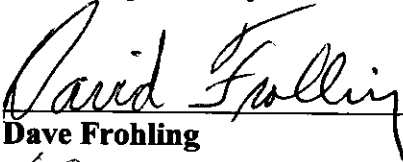
Dodge County Budget for 2015

We, the Dodge County Finance Committee, upon reviewing Resolution 14-41, the 2015 Proposed County Administrator's Budget to the Dodge County Board of Supervisors referred to us, conducted a special budget review meeting to consider Finance Committee, Departmental, Supervisor, or other proposed budget amendments.

The Committee's final recommendation on the 2015 Proposed County Administrator's Budget is a net county tax levy amount of \$32,726,321 and a resulting county tax rate of \$5.677/\$1,000 of Equalized Valuation.

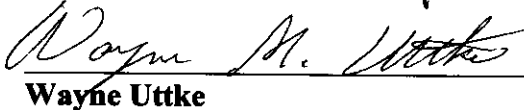
All of which is respectfully submitted the 28th day of October, 2014.

The Dodge County Finance Committee



Dave Frohling

Phillip Gohr



Wayne Uttke



Thomas J Schaefer



Gerald F. Adelmeyer