

Town of Alto

Town of Waupun

Town of Randolph

COLUMBIA COUNTY

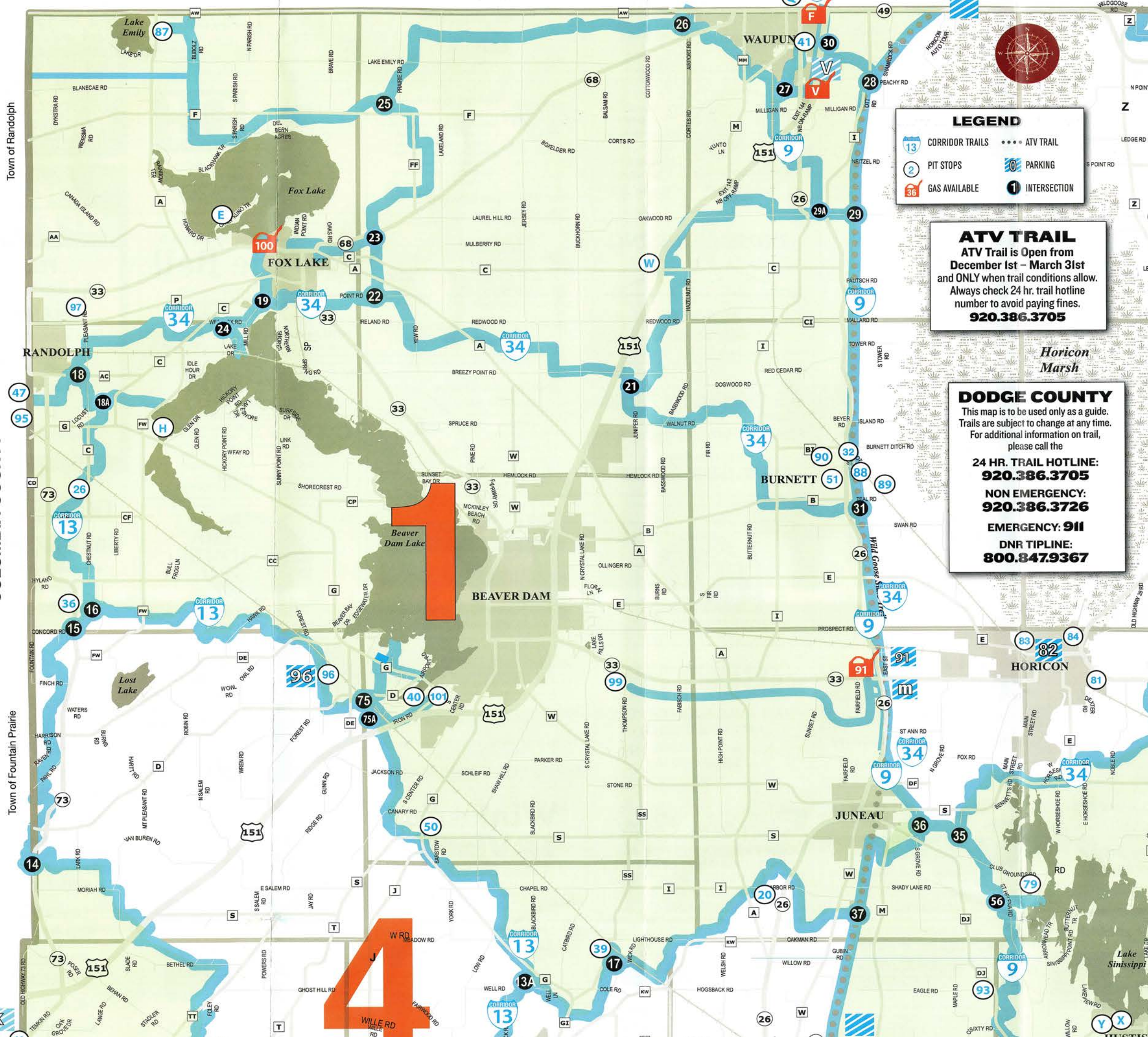
Town of Fountain Prairie

LEGEND

- CORRIDOR TRAILS
- PIT STOPS
- GAS AVAILABLE
- ATV TRAIL
- PARKING
- INTERSECTION

ATV TRAIL
 ATV Trail is Open from December 1st – March 31st and ONLY when trail conditions allow. Always check 24 hr. trail hotline number to avoid paying fines.
920.386.3705

DODGE COUNTY
 This map is to be used only as a guide. Trails are subject to change at any time. For additional information on trail, please call the
24 HR. TRAIL HOTLINE: 920.386.3705
NON EMERGENCY: 920.386.3726
EMERGENCY: 911
DNR TIPLINE: 800.847.9367



4
 WILLE RD
 WILLE RD

Horicon Marsh

Lake Simissippi

HUSTI