



**Extension**

UNIVERSITY OF WISCONSIN-MADISON  
DODGE COUNTY



# ANNUAL REPORT

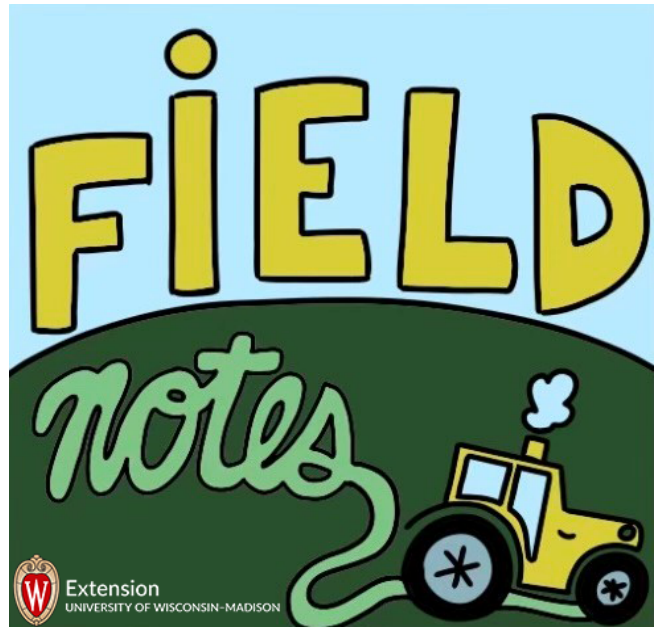
# 2022

*We teach, learn, lead and serve, connecting people with the  
University of Wisconsin-Madison, and engaging with them in  
transforming lives and communities.*



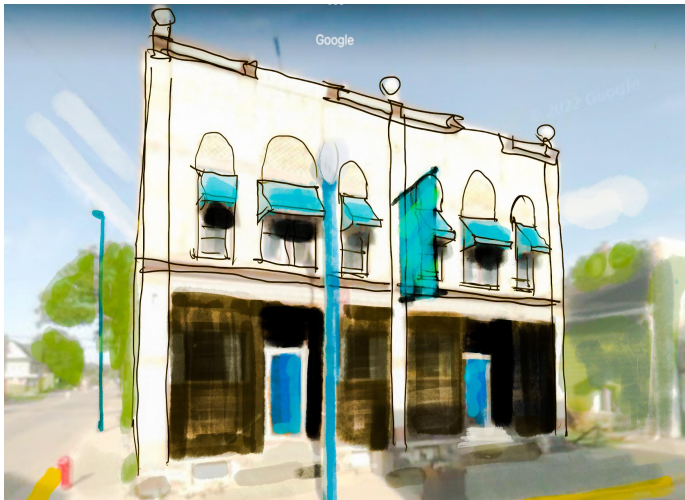
**Extension**  
UNIVERSITY OF WISCONSIN-MADISON  
DODGE COUNTY

# 2022 Annual Report



**FOOD WISE**  
Healthy choices, healthy lives.

UW-MADISON EXTENSION



**Learn About Your Land**   
CLASSES FOR WISCONSIN LANDOWNERS



## 4-H / Positive Youth Development

### Highlights

- There was a livestock education meeting scheduled in person right before the ice storm. Witzel worked with the committee to pivot the training to zoom. There were 63 youth attending with great feedback on the Careers in Agriculture panelist that shared their jobs with the youth.
- Witzel took the lead for Photography *Take & Learn* kits as a statewide project. There were 185 youth throughout the state registered for the kit. In addition to the learning in the kit, youth could attend one to four Zooms with photography experts to learn about how to use their camera, from beginning through advanced level photography skills. The teachers were 4-H Photography Leaders and fair superintendents.
- Witzel shared demographic information on the Dodge County 4-H program with the Extension Education Committee and the Dodge County 4-H families. It helped to identify county sparks and areas where we lack 4-H leaders.
- The following is the Dodge County results from the State Thriving Survey of youth. The full county report is available at <https://dodge.extension.wisc.edu/2023/03/helping-youth-thrive-4-h-thriving-model-results/>

#### DEVELOPMENTAL CONTEXT (PROGRAM QUALITY) EVALUATION RESULTS

Context matters! Research shows that youth programs that emphasize Sparks, Belonging, Caring Adults, Challenging Growth, and Youth-Adult Partnerships will have better outcomes for the youth who participate.



5



**EDUCATOR**

**Marie Witzel**  
Dodge County  
marie.witzel@wisc.edu



**PROGRAM ASSISTANT**

**Ellen Bohn**  
Dodge County  
ebohn@co.dodge.wi.us

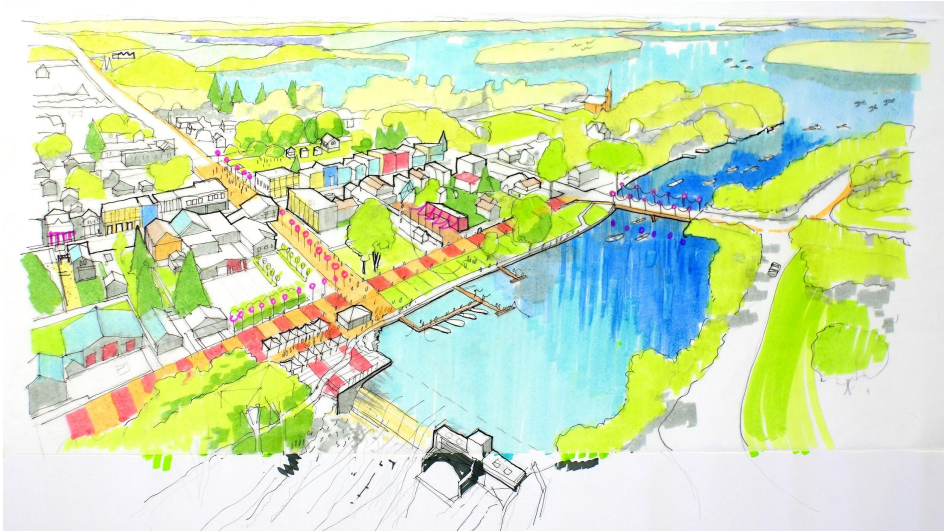




## Human Development and Relationships

### ***PATH of Hustisford Charrette***

Human Development and Relationships Educator Patricia Carroll, and Extension Lead Tracy Malterer assisted with every aspect of the implementation of Design Wisconsin's three day charrette in Hustisford. On May 12, 2022, a group of 20 planning and design professionals found their way to Hustisford (17 in person, and 3 remotely) to dedicate their time and expertise in hopes of helping Hustisford discover a shared vision for the future.



Design Wisconsin is a community design program offered by the University of Wisconsin-Extension's Community Vitality & Place making Team-a "Signature Effort"

that combines best practices and expertise from applied research in community development, economic development, natural resources, positive youth development, organizational and leadership development, and sustainability. Design Wisconsin helps communities identify and visualize their short-, medium-, and long-range visions. Todd Johnson mentored Carroll and Malterer to build the capacity of the local leadership team.



As a pre-charrette activity designed to inform community stakeholders, Dr. Kristin Runge worked with Carroll, Malterer, and the community leadership team on a community-based research activity in which a survey of residents of the greater Hustisford area was conducted in advance of their May 2022 design charrette. 396 residents provided input into the future of the community. As part of the pre-charrette process, a survey for the community of greater Hustisford was created and then launched on April 1 and promoted heavily through May 16 through the leadership of Carroll and Malterer.

A total of 396 survey starts were recorded, and 330 respondents completed all questions on the survey. Results were used to inform the Design Hustisford charrette, and continue to be used in community development on an ongoing basis. See the results [here](#).



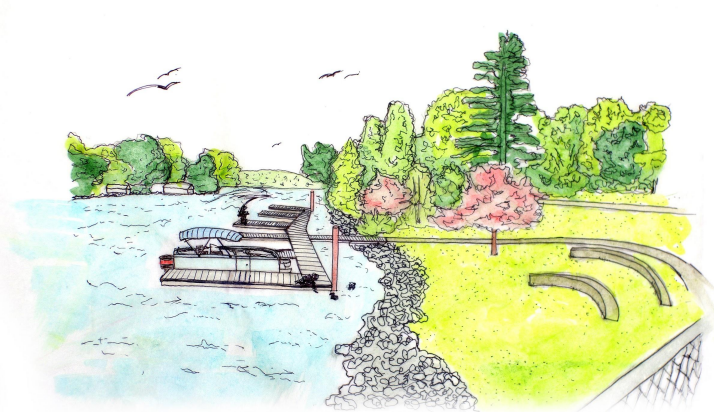
# Extension

UNIVERSITY OF WISCONSIN-MADISON  
DODGE COUNTY

# 2022 Annual Report

Design Wisconsin is a 3-phase process that begins with community capacity building, transitions into a public participatory process, and ends with implementation. During community capacity building, Carroll, Malterer, Dr. Kristin Runge, Todd Johnson and Neil Klemme worked with the local planning team to prepare them for the second and third phases of the program.

After 12-18 months of training, the local leadership team was ready for the second phase of the program—a 3-day community design charrette (a fast pace and intense period of community visioning). The third phase is implementation—a whole new planning process led by the local planning team and supported by Carroll and Malterer which began soon after the charrette and is ongoing. Stay tuned, good things are happening in Hustisford! Read the report [here](#).



Coordinate and refresh color & finish

Glazing with historical scale and pattern

Panel details to provide historical reference

Original scale windows with clerestory maintained

Panes in window to break up large pieces of glass and give human scale

Maintain and highlight historical details

Large windows can be frosted to maintain privacy, access to daylight & flexible future use



## HUMAN DEVELOPMENT & RELATIONSHIPS

### EDUCATOR

**Pattie Carroll**  
Dodge County  
[patricia.carroll@wisc.edu](mailto:patricia.carroll@wisc.edu)





Extension

UNIVERSITY OF WISCONSIN-MADISON  
DODGE COUNTY

# 2022 Annual Report

## Agriculture | Crops & Soils

### Highlights

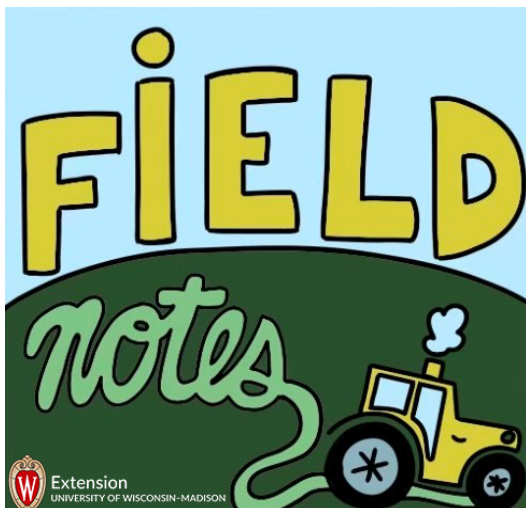
#### ***The profitability of grazing cover crops interseeded into 60" row corn***

Regional Crops Educator Will Fulwider worked with Dodge county farmer Jeff Gaska to run a replicated on-farm trial exploring interseeding cover crops in 60" and row corn for the purpose of grazing the covers and corn stover after corn harvest. After collecting the corn yield data and cover crop biomass data between the four treatments (corn row spacing: 30" and 60" and interseeded cover crops: covers and no covers), Fulwider ran an analysis investigating how long Gaska's beef cow-calf pairs could stay out on the covers given the available biomass and corn stover. An economic analysis was then conducted between three different scenarios to determine the profitability of the practice: grazing interseeded covers, feeding the cows in confinement, and bale grazing.



The results were shared out in a morning field day in November. Despite the 18 degree and blustery day, about 20 farmers showed up, some of whom are not frequently seen at the farmer group meetings, including farmers from Columbia and Dane counties. Following the results presentation, attendees saw the interseeding rig Gaska used and walked out to the field to see the state of the covers in early winter. An active discussion about possible mixes and approaches ensued.

#### ***Field Notes podcast and radio show***



Fulwider and Michael Gessinger, formerly Regional Crops Educator in Barron, Polk, Pierce, and St. Croix counties and now Outreach Specialist with the Nutrient and Pest Management Program of UW-Madison started a podcast talking with farmers, experts, and agronomists to discuss research-based approaches to tackling the issues facing agriculture in Wisconsin. The first episode aired in late July with subsequent episodes being published monthly on the state Crops and Soils website and airing on WBEV here in Dodge County. Topics have ranged from practices like bale grazing and frost seeding red clover to exploration of larger themes like digital agriculture and soil health. Listen to Field Notes wherever you get your podcasts.



## Healthy Choices, **Healthy Lives**

FoodWise is federally funded by the Supplemental Nutrition Assistance Program-Education (SNAP-Ed) and the Expanded Food and Nutrition Education Program (EFNEP). We advance healthy eating habits, active lifestyles and healthy community environments for Wisconsin residents with limited incomes through nutrition education at the individual, community and systems levels.

## The **Landscape**

**13%**

of population lives in census tracts that are low income & have no healthy food outlet.



**39%**

of adults are obese



**8%**

of individuals are food insecure



**14%**

of households receive SNAP benefits



## Achieving More **Together**



UW-Madison Division of Extension works alongside the people of Wisconsin to deliver practical educational programs where people live and work – on the farm, in schools and throughout urban and rural communities. In Dodge County, FoodWise partners with schools, Head Start programs, senior meal programs, and food pantries to help make the healthy choice the easy choice in our communities.

## Community Impacts **In 2022**

Delivered nutrition education to 494 learners in a variety of settings (early care and education centers, K-12 school settings, senior meal sites, etc).



In collaboration with Marshfield Medical Clinic of Beaver Dam and Playground Movement, FoodWise provided residents of the Lake Crest low-income apartments a free garden bed to grow their own vegetables. Produce from some of the beds went to the Habitat for Humanity Restore Food Pantry. This project expanded healthy food access to people in this community.

## Healthy Foods... Liked!

Nutrition educator Kimberly Lafler partners with Dodge Land Elementary School District to provide nutrition education to third-grade students. The students receive a series of six educational lessons that include an activity and food samples to reinforce key lesson concepts.

At the conclusion of a lesson about the importance of increasing the different colors of fruits and vegetables and ways that it helps your body be healthy, Lafler passed out a snap pea to each of the third grade participants. In one of the classrooms, a student approached Lafler and noted:

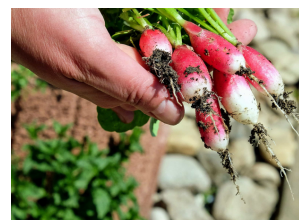


Providing nutritious food samples for students to explore and try allows them to make the decision if they will eat the food. When students make their own eating choices, it increases the likelihood that they will try and potentially enjoy the item. This opportunity also increases the likelihood of future acceptance of other healthy food choices.

## Fresh produce... Available

In the summer of 2021, in collaboration with several community agencies, FoodWise built 11 raised garden beds in a low-income area of Beaver Dam. Community agencies and volunteers maintained the gardens were maintained. All the produce that year was donated to two food pantries in the area.

In the summer of 2022, the group overseeing the project decided to take a different route. Instead of community members and agencies maintaining it, residents that lived in the low-income apartments surrounding the gardens had the opportunity to tend their own garden, growing their own fresh produce.



The majority of the beds were adopted and utilized. Several folks adopted two beds and grew produce for the local food pantry. Residents in the area continued to receive increased access to fresh produce.

In the upcoming summer, the garden group plans to increase community awareness of the project and the needs of the residents living in their city.



### COORDINATOR

**Caitlin Richardson**  
Dodge & Columbia County  
[caitlin.richardson@wisc.edu](mailto:caitlin.richardson@wisc.edu)

## FOODWISE



### EDUCATOR

**Kimberly Lafler**  
Dodge & Columbia County  
[kimberly.lafler@wisc.edu](mailto:kimberly.lafler@wisc.edu)







## Agriculture | Dairy

### Highlights

Regional Dairy Educator Alison Pfau was instrumental in the development of a farmer network program in our region where farmers and landowners could gather for a Q&A Session with Extension dairy and crops educators as well as talk amongst peers about what went well for them this season. UW-Madison Extension Farm Management educator Jim Versweyveld presented a program called “Finding the Right People”, with the idea to open the discussion about the labor challenges at the dairy farms. The session in different counties had some attendance and the audience appreciated the information.



**Your farm-ready research**

Extension Agriculture virtual education offerings at [go.wisc.edu/FarmReadyResearch](https://go.wisc.edu/FarmReadyResearch)

In networking around the counties that Alison serves, Dodge, Dane, Jefferson, Rock and Walworth, Alison visited farms weekly with the idea to meet farmers and understand the challenges that they are going through. While introducing herself and discussing the tools that UW Extension offers to the agricultural community, she gained feedback on what educational information producers want to get from Extension. In most of the farm visits, producers are facing some challenges with their Spanish speaking employees.



Problems arising were lack of communication, poor training, and low labor retention, which showed the necessity of program videos and other extension resources for owners and their Spanish speaking employees and how those tools could impact and mitigate issues.

Alison planned and filmed short educational videos in Spanish and English, emphasizing different dairy farming practices and topics such as calf care, nutrition, dairy production, reproduction, health, farm worker/farm manager relationships and animal welfare.

In partnership with Regional Crops Educator, Will Fulwider, work was done making videos together about soil health, weed and pest management and diversified cropping systems. These English/Spanish videos help the communication between employees and managers, so knowledge is shared to everyone in the dairy operation, with the most up-to-date information for farming operations available. These videos will be posted on the Extension website, Extension Facebook, and Instagram account in Spring 2023.



### CROPS & SOILS

**Will Fulwider**  
Dodge & Dane Counties  
[will.fulwider@wisc.edu](mailto:will.fulwider@wisc.edu)



### DAIRY

**Alison Pfau**  
Dodge, Dane, Jefferson, Rock & Walworth Counties  
[alison.pfau@wisc.edu](mailto:alison.pfau@wisc.edu)





## Natural Resources

### Highlights

The Regional Natural Resource Education program organized numerous events both in person and online, throughout Wisconsin. Hundreds of participants learned about invasive species, forest health, wildlife and other forestry topics. Special programming for new Wisconsin landowners and maple syrup producers was supported by external grants.

## Learn About Your Land

### CLASSES FOR WISCONSIN LANDOWNERS




**got woods?**

Connect with us!  
woodlandinfo.org  
forestry@extension.wisc.edu

 WiscExtForestry  
 @WiscExtForestry  
 @WiscEXTforestry

Extension Forestry helps you get more from your woods.

- Timber Harvests
- Wildlife
- Agroforestry
- Non-Timber Forest Products

Do you know your county forester?

YES NO

Learn About Your Land 



## NATURAL RESOURCES

### FORESTRY OUTREACH SPECIALIST

**Tony Johnson**  
Southern Wisconsin  
anthony.johnson@wisc.edu





**Extension**

UNIVERSITY OF WISCONSIN-MADISON  
DODGE COUNTY

# 2022 Annual Report

---

## **2022 DIVISION OF EXTENSION - DODGE COUNTY EDUCATORS & STAFF**

Patricia Carroll, Human Development & Relationships Educator

Will Fulwider, Regional Crops & Soils Educator

Jeff Hoffmann, Area Extension Director

Tony Johnson, Forestry Outreach Specialist-Southern Region

Kimberly Lafler, FoodWise Nutrition Educator

Alison Pfau, Regional Dairy Educator

Caitlin Richardson, FoodWise Coordinator

Marie Witzel, Positive Youth Development Educator

---

Ellen Bohn, 4-H & Youth Development Assistant

Laure Dei, Program Support

Tracy Malterer, Extension Liaison & Program Support



**Extension**

UNIVERSITY OF WISCONSIN-MADISON  
DODGE COUNTY

# 2022 Annual Report

---

## EXTENSION DODGE COUNTY PROGRAMS AND SERVICES

**What follows is a comprehensive list of the educational programs and services provided by UW-Madison, Dodge County Extension to Dodge County residents.**

---

**UW-Madison Campus Specialist/Professor Workshops**

County initiated workshops and training opportunities are offered for community and governance groups throughout the year. For example professors on campus are team members with Dodge County Extension Educators collaborating to provide research based data. Additionally, professors and specialists lead workshops and training providing their expertise on priority issues or challenges. UW campus Specialist / Professor efforts are provided at no cost to Dodge County because Dodge partners with the UW-Madison in the local Extension office.

---

**Forestry & Natural Resources Outreach ((Tony Johnson, regional educator))**

Woodland Owners Workshop - A county initiated, community centered educational program designed to increase awareness of private woodland owners about best practices of small woodland ownership practices

Agroforestry workshops - A county initiated, community centered series of educational programs designed to address the local needs of woodland owners needs and increase the sustainability of the natural resource

Maple Syrup Workshop - A county initiated, community centered educational program designed to introduce private landowners about starting or improving a maple syrup operation

Facilitation and outreach for professional association - A county initiated, community centered educational program facilitating committee meetings for the WI Tree Farm Committee assisting with improving the committee's mission focus

Conference planner for the WI Woodland Owner Association - A county initiated, community centered educational program assisting the Association's goal to provide relevant high level educational presentations for the region

---

## **Crops & Soils Education** ((Will Fulwilder, regional educator))

Regional educators in Agriculture collaborate with other crops and soil team members in the State applying research findings and providing education and outreach efforts. This education will be done through assessment of needs and designing, delivering, and evaluating research-based educational programming and services to meet these needs.

### **Ag Education - Crops**

A county initiated, community centered educational effort providing one-on-one discussions and local area presentations on high priority Ag topics

A county initiated, community centered effort providing educational programs and acting as an advisor to Dodge Co. Healthy Soils Healthy Waters Farmer-led Watershed Group. This includes planning research and educational activities, workshops focusing on farmer education of conservation cropping practices

County initiated, community centered on-farm research projects. This applied research is conducted in collaboration with campus professors at the UW-Madison College of Ag and Life Science. Topics for this research are focused on increasing the sustainability of Ag producers, and building healthy soils. These research projects are conducted on local Dodge County farms.

A county initiated, community centered educational Field Notes podcast/radio show. broadcast on WBEV radio station monthly and available on streaming services as well as the UW Madison Extension state-wide Crops and Soils [website](#). It features interviews pairing a research or industry specialist and a farmer to discuss innovative cropping practices.

A county initiated, community centered educational monthly newsletter for Ag producers. It includes recent research applicable to farmers in Dodge County as well as promotes Extension and partner educational events

---

## **FoodWise Nutrition Education ((Kimberly Lafler, Caitlin Richardson))**

### **Nutrition Education**

A county initiated, community centered educational collaborations with local agencies to expand access to healthy food. Efforts include garden projects and promotion and marketing of EBT at the Beaver Dam Farmers Market.

A county initiated, community centered educational program which provides nutrition education in Dodge County Schools

A county initiated, community centered educational program which provides nutrition education at Head Start Programs with students and parents in Dodge County

A county initiated, community centered educational which provides nutrition education at partner Food Pantries in Dodge County

A county initiated, community centered educational which provides nutrition education at Senior Meal Sites and eligible senior housing in Dodge County

A county initiated, community centered educational which provides nutrition education at job education sites, skills training sites with partner agencies in Dodge County

A county initiated, community centered educational which provides nutrition education with UMOS and summer rec programs for K-5 with partner agencies in Dodge County

**Strong Bodies Program** - A county initiated, community centered program which provides resistance training and nutrition education for adults in Dodge County

---

## **Human Development and Relationships Education ((Pattie Carroll))**

### **Parenting and Financial Education**

A county initiated, community centered educational program providing parenting education with community partners and with referrals from Dodge County Human Services, Family Courts, Parent Resource Place, Head Start and Early Head Start, Birth to Three among other agencies

A county mandated, community centered educational program teaching Co-Parenting education as a booster sessions to augment Dodge County Family Court's mandated co-parenting

A county initiated, community centered educational program providing financial literacy education with referrals from Dodge County ADRC, Human Services and Beaver Dam Parent Resource Place (Renewal Unlimited) among other agencies  
Mental Health Education -certified trainer in WeCope and ACE Interface

A county initiated, community centered educational Professional Development training for Dodge County Early Child Care providers

A county initiated, community centered educational program training for Educators-Registered Tier 14 trainer for the Wisconsin State Registry serving Dodge County child care industry

Community centered educational program designed to increase healthy eating and food awareness concerns by answering food safety, food preservation, and food preparation calls from Dodge County residents

A county initiated, community centered educational effort for families which designs, develops, and implements needs assessments with the interest of strengthening families in Dodge County and throughout the state

A county initiated, community centered educational effort for families which designs, develops, and implements research and evidence informed curricula and programs with the aim of strengthening families in Dodge County and throughout the state.



---

**Dairy Education** ((Alison Pfau, regional educator))

Regional educators in Agriculture collaborate with other dairy team members in the State applying research findings and providing education and outreach efforts. This education will be done through assessment of needs and designing, delivering, and evaluating research-based educational programming and services to meet these needs.

**Ag Education - Dairy**

A county initiated, community centered set of educational programs designed to educate area Dairy farmers on the best practices of animal nutrition and address individual farm challenges

A county initiated, community centered educational workshops for area Dairy farmers on current issues and best practices in animal welfare and animal care

A county initiated, community centered educational programs designed to teach area livestock and dairy farmers on the best practices in farm animal handling

A county initiated, community centered educational workshops for area Dairy farmers on best practices in Human Resources and Labor related with dairy farming

A county initiated, community centered educational programs for area Dairy farmers on best practices in worker safety trainings for all types of Ag producers

A county initiated, community centered educational programs for area Dairy farmers on human resource issues faced by Dairy farm owners who have farm employees.

---

**Positive Youth Development Education** ((Marie Witzel))

**Youth Development Education**

A county initiated, community centered set of educational programs designed for Dodge County youth who serve on 4-H committees, and other local decision-making bodies. – the purpose is to empower the youth voice and develop new leaders in the 4-H program for other county committees and organizations

A county initiated, community centered set of educational programs which teach and facilitate youth leadership training. The purpose of these trainings is to for youth to learn skills to become productive citizens and have the strength to share their voice in a public forum

A county initiated, community centered sequence of educational programs designed to teach local adult volunteers best practices they can use when supporting youth in leadership roles and how to engage with youth and empower them to make decisions

A county initiated, community centered set of educational programs which teach youth to create a resume, cover letter, and/or prepare for a job or scholarship interview

A county initiated, community centered educational program which empowers youth to identify skills gained through experiences (4-H or others) that contribute to workforce or college readiness.

A county initiated, community centered set of programs of outreach collaborative partnerships with Dodge County Shop with Cops, Dodge County FFA programs,

A county initiated, community centered educational applied research which is looking into improving the ability for youth to thrive in Dodge County 4-H

---

#### **4-H Program Education ((Ellen Bohn))**

#### **4-H Membership Club Education**

A county initiated, community centered program which organizes the following youth program activities and contests: 4-H Family Learning Day, 4-H demonstrations, 4-H clothing & food revues, music performances

A county initiated, community centered program which coordinates 4-H educational experience opportunities with 4-H members and families

A county initiated, community centered educational program which facilitates employability skill-building through youth interviews for scholarship applications

A county initiated, community centered set of educational programs which coordinates the Kids in Need donations to distribute project activity materials to 4-H clubs and partners for community service projects

A county initiated, community centered program of administration of county 4-H clubs

A county initiated, community centered set of educational programs which teach youth Ag Education in partnership with county ag organizations

A county initiated, community centered set of educational programs which coordinates summer literacy activities throughout the county

A county initiated, community centered educational effort of designing promotional activities to get youth interested in the 4-H Club program

A county initiated, community centered educational effort which includes organizing and coordinate Dodge County junior fair judges, superintendents, and volunteers and junior fair activities for the county fair

---

### **Office Administrative Support Services**

The Pesticide Application Certification program is a Department of Trade and Consumer Protection Agency State mandated, community centered program where area farmers are trained to gain a certification on the proper use and disposal of Ag chemicals. Office personnel complete the administering of the program and test. Weekly during the winter

The Tractor Safety Program is a State/Federally mandated, community centered program where area youth under 18 attend 16 hours of safety training and complete a driving test which permits them to work in Ag/rural businesses. Office personnel complete the logistics of the program.

A county initiated; government centered service which coordinates department room Reservation/Calendaring for Auditorium rooms on 1<sup>st</sup> Floor. All year.

A county initiated; government centered service coordinating the annual Dodge County Clean Sweep Event with participating departments. During the summer

A county initiated; government centered service of cross-promotion of department programs/events with public (e.g., Land & Water Conservation, Land Resources & Parks)

A county initiated; government centered service of coordinating the UPS pickup location for county department packages

A county initiated; county centered service of coordinating the public with UW Madison Extension resources & programs (via phone, in-person, and calls) farm management, crops & livestock, financial literacy, food preservation, youth development

A county initiated; county centered service of coordinating and connecting local volunteers with UW Extension programs and events

A county initiated; county centered service of coordinating and distributing marketing materials, publications, social media content of UW Extension programs

A county initiated; county centered service of coordinating, instructing & distributing of household water test kits

A county initiated; county centered service of coordinating, instructing & distributing of soil sample kits/bags

A county initiated; county centered service of coordinating the checkout of soil sample & hay probe equipment

A county initiated; county centered service of conducting pressure canner testing & education materials distribution

A county initiated; county centered service of coordinating the Dodge County Clean Sweep Event and Education with the public, which includes managing the Clean Sweep and Recycling page on the Extension Dodge County website. Continually updated

A county initiated; county centered service of coordinating the County Conservation Aids Grant applications and report