






**WEST WASHINGTON STREET BUSINESS DISTRICT
RECOMMENDED FUTURE GOLD STAR
MEMORIAL TRAIL CONNECTION**

HORICON, WISCONSIN

PHASE 2A

-  DISTRICT BOUNDARY
-  MUNICIPAL BOUNDARY
-  EXISTING POLE
-  EXISTING POLE WITH LIGHT
-  PROPOSED LIGHT

**FUTURE TRAIL
CONNECTION TO
WILD GOOSE
STATE TRAIL**

**RECOMMENDED ON-STREET
BIKE LANES/ROUTE**

**RECOMMENDED OFF-STREET
MULTI-USE TRAIL
(10' WIDE)**

PRAIRIE RESTORATION

**RECOMMENDED EXPANSION
OF EXISTING SIDEWALK
TO OFF-STREET
MULTI-USE TRAIL
(10' WIDE)**

20' BUFFER

City View Blvd

Horicon St

Clinton St

Columbia St

Horicon St

Washington St

Existing Signage

Existing Signage

Proposed Painted Crosswalks

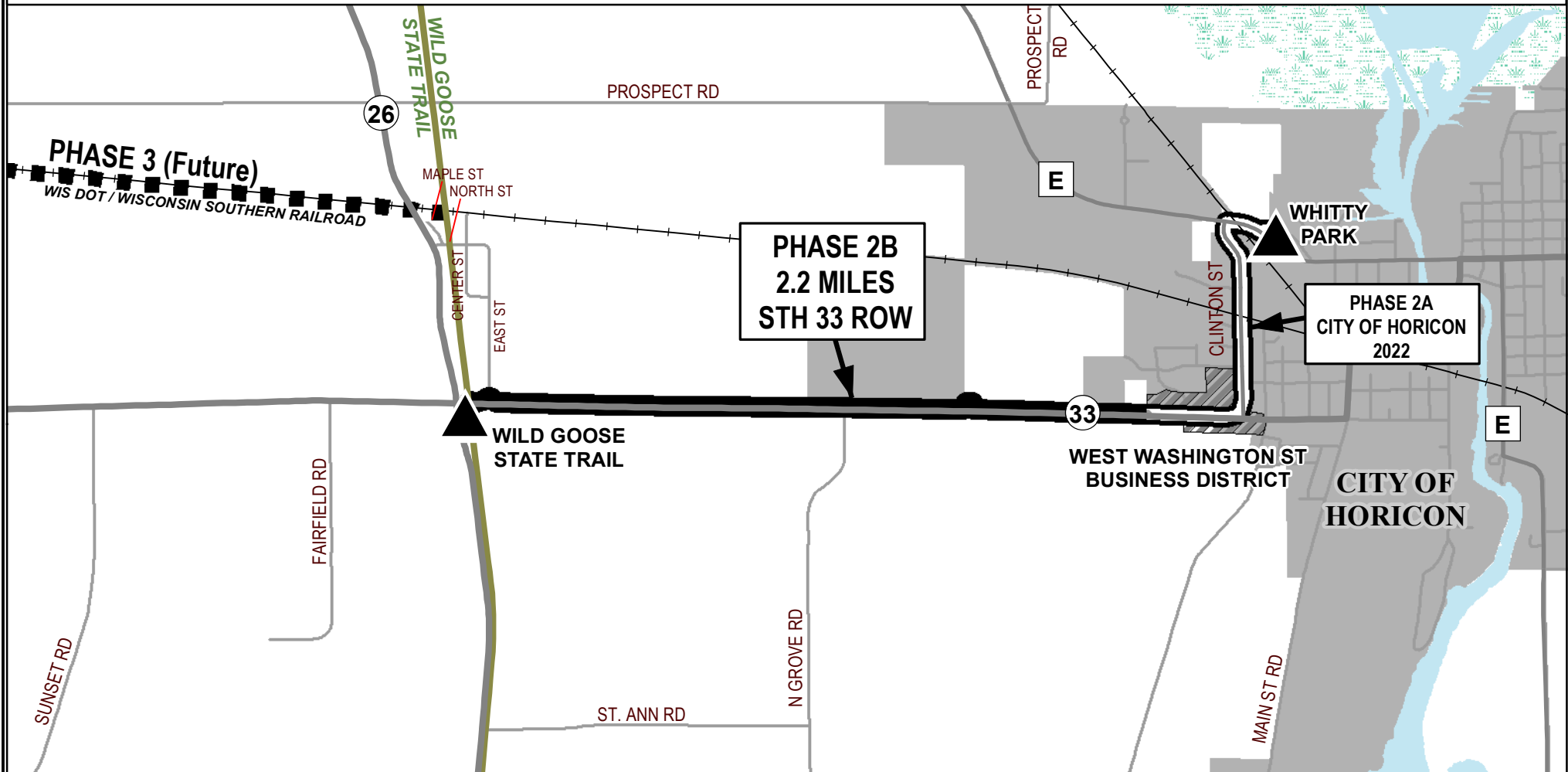
Extended Sidewalk

Proposed Painted Crosswalks



GOLD STAR MEMORIAL TRAIL

PHASE 2B - HORICON TO WILD GOOSE STATE TRAIL



▲ --- TRAILHEADS

▨ --- HORICON WEST WASHINGTON STREET BUSINESS DISTRICT

GSMT PHASE 2B ROUTE (2.2 MILES) --- HORICON WEST WASHINGTON STREET BUSINESS DISTRICT TO WILD GOOSE STATE TRAIL

