



Wisconsin & Southern Railroad Welcomes

The East Wisconsin Counties Railroad Consortium

Event: Rail Excursion Tour for members of the East Wisconsin Counties Rail Consortium and WisDOT Officials

Date: Friday, August 25, 2017, 12 Noon – 3:45pm

Location: Oshkosh, WI to Horicon, WI
WSOR's Oshkosh Subdivision

Itinerary

12 Noon: All Guests arrive at WSOR's Horicon Yard, Horicon, WI
Board Motorcoach for Oshkosh

1:15pm: Safety Briefing / Board WSOR Passenger Train

1:30pm: Lunch / Refreshments

1:45pm Passenger Train Departs Oshkosh

3:45pm: Arrive at WSOR's Horicon Terminal

Background

The Oshkosh Subdivision begins at Milepost 139.1 in Horicon, WI and ends at Milepost 185.6 in Oshkosh, WI. This event will begin in Horicon where all will board a motorcoach for Oshkosh, WI. At Oshkosh, all will board the train for an excursion back to Horicon. The excursion will highlight past, current and upcoming rehabilitation projects, as well as the Businesses currently served by rail.

Safety: Guests may be on an active railway and around rail equipment. We advise wearing jeans and work boots. If a guest does not have boots please wear comfortable shoes. No open-toe shoes or heels. Eye and ear protection will be provided if needed.

Refreshments: Lunch will be provided on the train.

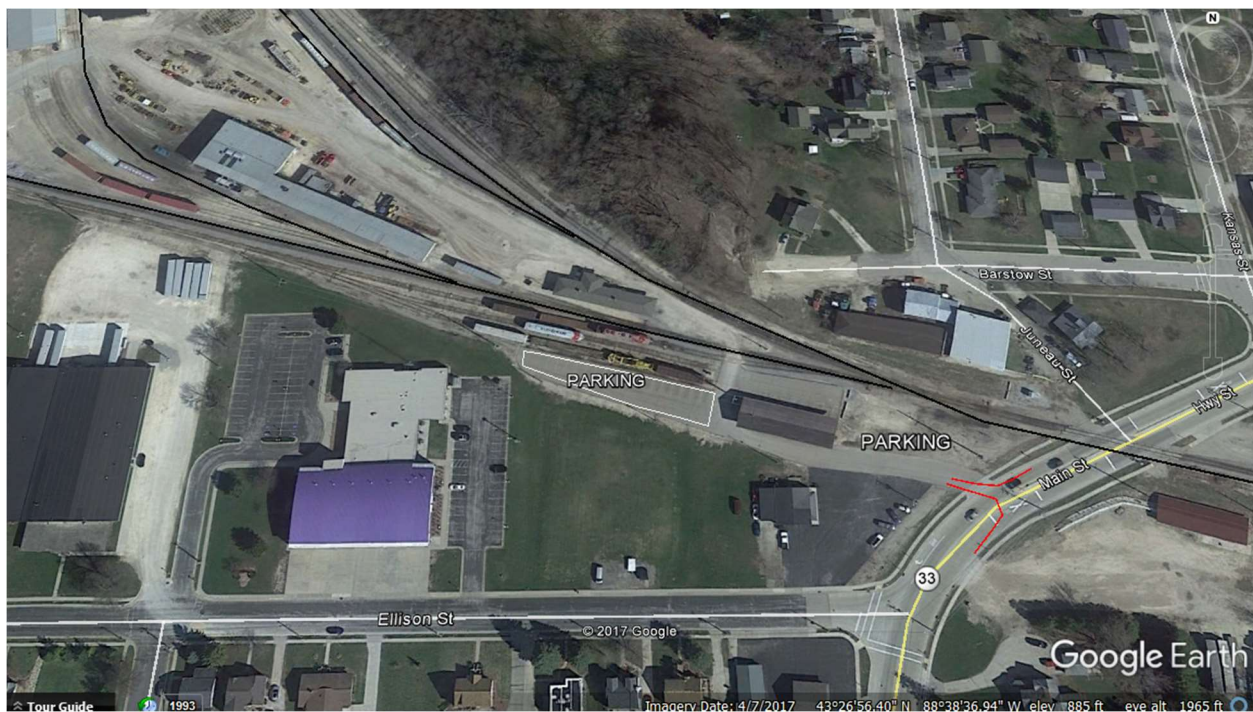
Contacts:

Wisconsin & Southern Railroad

Ken Lucht – (414) 750-6402

Directions: Please arrive at WSOR's Horicon Terminal by 12 Noon. Our driveway entrance is located off Highway 33 just south of the railroad tracks. From the east, take Highway 33 through town until you cross the railroad tracks, then take your first right hand turn. From the west, take Highway 33 through town and after you pass Ellison Street take your first left hand turn into our driveway (before the railroad tracks).

Parking is available in the gravel parking lot located immediately adjacent to Highway 33. See attached diagram for preferred parking areas. At the conclusion of the trip, all will disembark the train in Horicon and return to your vehicle.



If you have any questions, please contact me directly at (414) 750-6402.

Thank you!