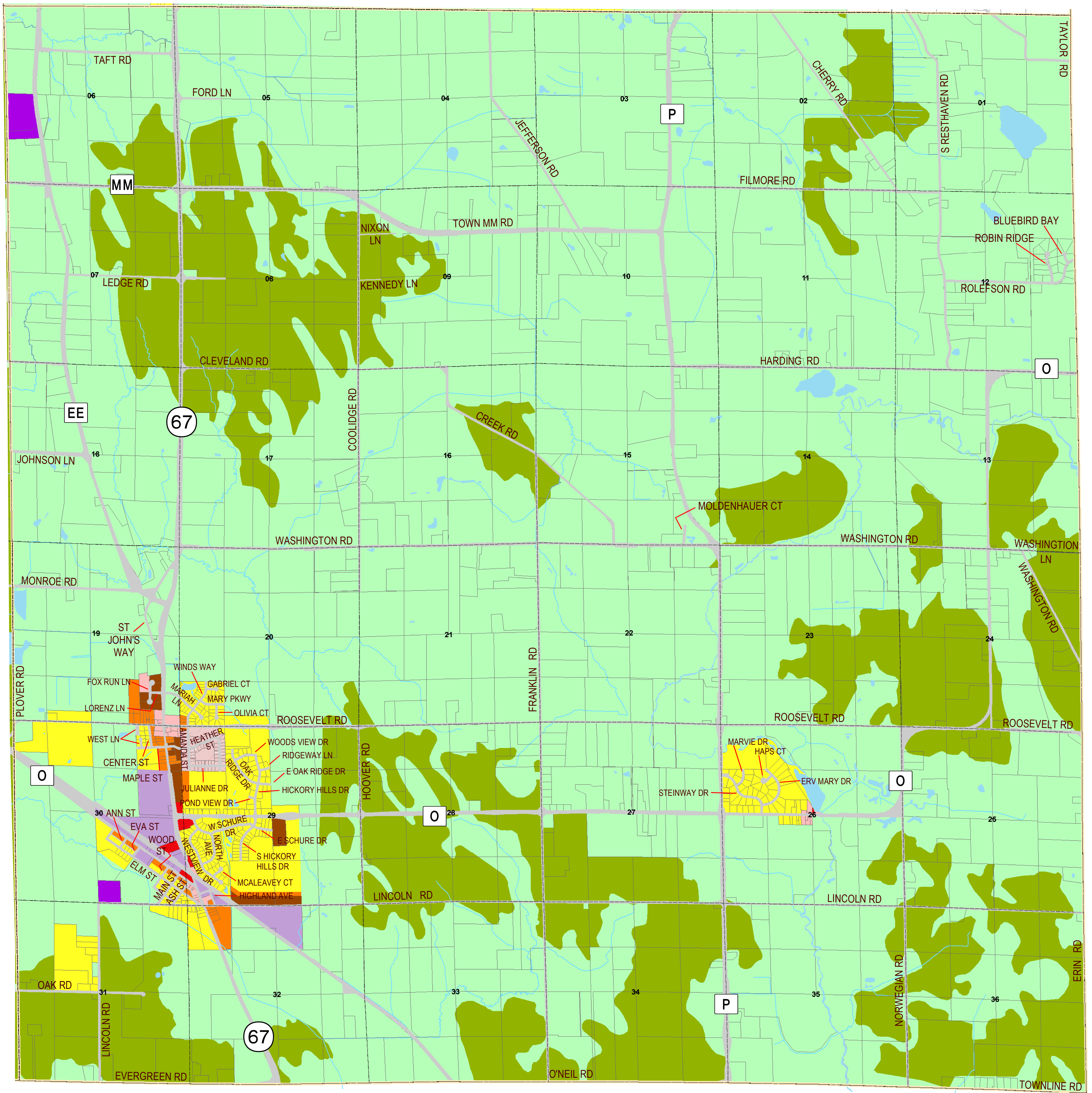
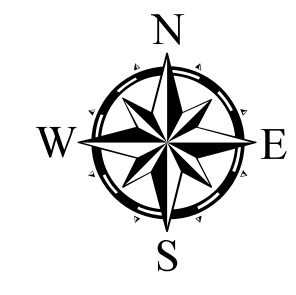


County Zoning

Town of Ashippun, Dodge County, Wisconsin

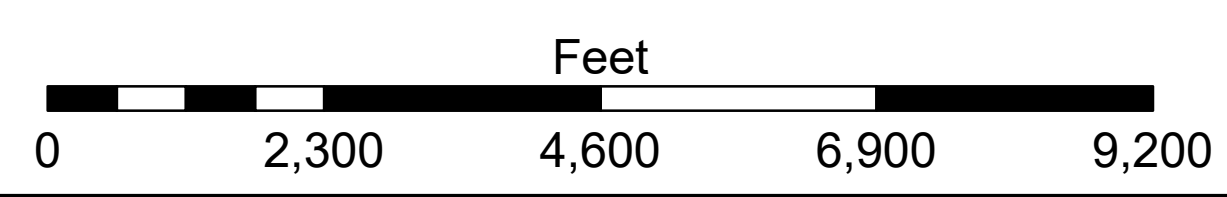
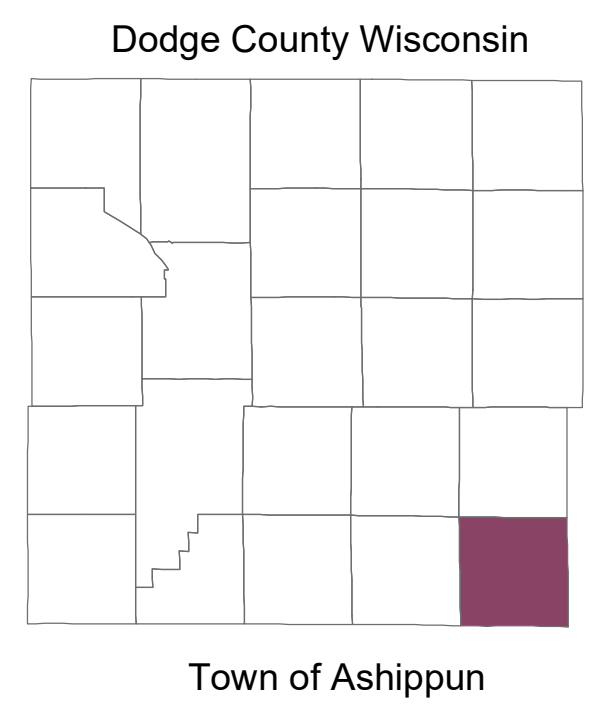


Legend		Zoning	
	U.S. Highway		A-1 Prime Agricultural
	State Highway		A-2 General Agricultural
	County Highway		C-1 General Commercial
	Town Road		C-2 Extensive Commercial
	Railroad		I-1 Light Industrial
	Town Boundary		I-2 Industrial
	Section Line		R-1 Single Family Residential
	Tax Parcel Boundary		R-2 Two Family Residential
	Municipalities		R-3 Multi-Family Residential
	Waterbody		PUD Planned Unit Development
	Road Right-of-Way		
	Rivers and Streams		
	Intermittent Stream		



Adopted: June 16, 2009
Last Updated: June 24, 2022

**Dodge County
Land Resources and Parks
Department**



Source: Dodge County Land Resources and Parks Department, January 2009
Map Created: January 2009