

## DODGE COUNTY HUMAN SERVICES & HEALTH BOARD MINUTES

The Dodge County Human Services & Health Board met on Wednesday, September 2, 2015 in the Human Services Admin Room #G52 of the Henry Dodge Office Building.

The meeting was called to order at 7:00 p.m. by Glenn Stousland, Chairman.

**ROLL CALL: PRESENT:** Glenn Stousland, Chairman, Mary Bobholz, Gilbert Falkenthal, Phillip Gohr, James Houchin, David Godshall, Lois Augustson and Clem Hoelzel.

**NOT PRESENT:** Mark Roesch

**ALSO PRESENT: STAFF:** Janet Wimmer, Director, Alyssa Schultz, Sheila Drays, Ken Kamps, and Jim Mielke, County Administrator.

**OTHERS:** Kay Marose, Neil Whiting, Janet Carlson, Mary Kay Westimayer, Mary Wafle.

**Certification of Public Notice:** Jackie Vincent certified public notice.

### **Consideration to Deviate from the Agenda if Needed:**

A motion was made by Phillip Gohr to approve deviation from the agenda if needed. The motion was seconded by Clem Hoelzel. Motion carried.

### **Approval of Minutes of the August 5, 2015 meeting:**

A motion was made by Mary Bobholz to approve the minutes of the July 8, 2015 meeting as presented. The motion was seconded by David Godshall. Motion carried.

**Public Forum:** None

### **Board Action:**

- A. Motion was made by Clem Hoelzel to consider and discuss the Aging Plan. This motion was seconded by Lois Augustson. Motion carried. Discussion regarding the Aging Plan was held.
- B. Motion was made by Clem Hoelzel to consider and discuss Feil's Supper Club Bid. This motion was seconded by Phillip Gohr. Motion carried.
- C. Motion was made by Phillip Gohr to consider and discuss Appointments to ADRC Governing Board. The motion was seconded by Clem Hoelzel. Motion carried. Discussion was held regarding the following being appointed to the ADRC Governing Board: Jeffry Duchac – Chairperson, Shirley, Kitchen – Vice Chairperson, Judy Braun – Secretary and Judy Patenaude – reappointed. Beth Ingalls-Leisses – resigned.

### **Director's Report:**

Janet spoke regarding the Operational Review draft from Baker Tilly and said she is pleased with the work they did as well as the information provided to us. The idea would be to move forward with their recommendations, prioritized starting high importance first, medium second and low last. Jim and Janet explained however, that this is just a draft and this report will first go to the Oversight Committee, where questions can be asked, or information can be given back

to Baker Tilly. Heather from Baker Tilly will then be present at the full County Board for a final presentation in October.

### **Division Reports:**

The Board members reviewed and discussed the following informational items:

- **Fiscal & Support Services Division:**

- A review of July, 2015 expenditures & revenue was given by Ken Kamps.
- Regarding 2015 budget amendments, Ken said when it's impossible to say for sure, but he would estimate an \$800,000 deficit at the end of 2015, if things would continue as they have been. However, Janet stated there has been a lot of effort to find deductions and align the budget with actual day to day costs, as not to end up with that kind of deficit at the end of the year. When asked if job positions may be cut to stay within budget, Janet stated that at this point Jim has said that is not something being looked at. Some positions have not been refilled as people have left, but staff are not being let go.

- **Community Support Services Division:**

- **Aging/Nutrition/Transportation/ADRC items:** ADRC Call Activities 2014 – 2015 report, July senior dining center comments & dining statistics, most recent Volunteer Drivers 2015 Report.
- **Economic Support Items:** Economic Support caseload statistics.
- **Long Term Support Items:** Adult Protective Services/Long Term Support and 2014 & 2015 Adult Services Activities report.
- **Public Health Items:** Public Health Program Statistics 2015.
  - Jody stated that Unity will once again be letting DCHS roster bill for flu shots

- **Clinical & Family Services Division:**

- **Child Welfare Items:** Kinship Care Expenditure Report for July, Child and Adolescent Services data and 2015 Children's Monthly Out-of-Home Placement Costs.
- **Mental Health Items:** Clinical Services Program Statistics 2015.

**Next Meeting Date:** October 7, 2015 @ 7:00 p.m.

A motion was made by Phillip Gohr to adjourn the August meeting. The motion was seconded by James Houchin. Motion carried. The meeting was adjourned at 7:50 p.m.

---

Lois Augustson, **Secretary**

---

Glenn Stousland, **Chairman**

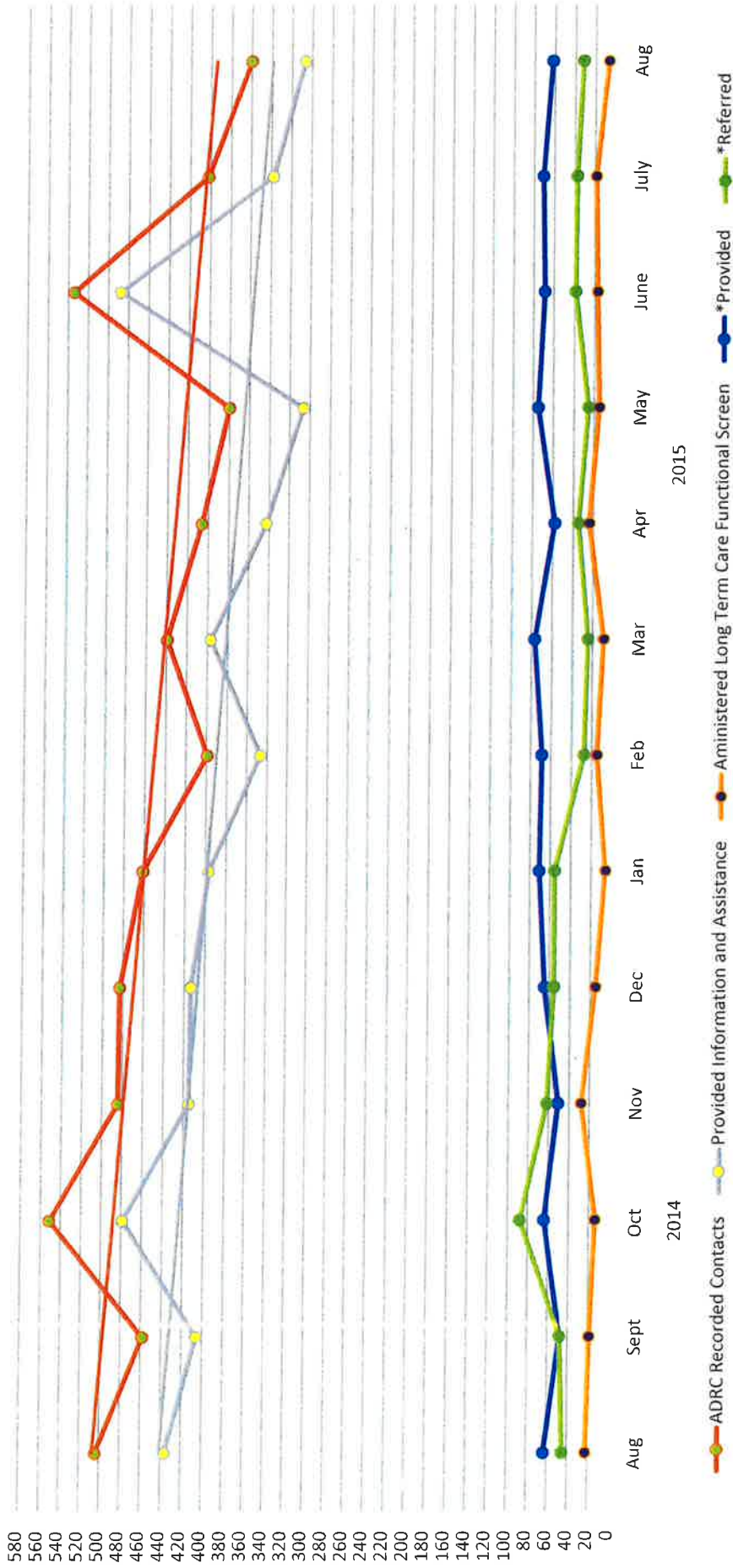
---

Jackie L. Vincent, **Recording Secretary**

jv

**DISCLAIMER: THE ABOVE MINUTES MAY BE APPROVED, AMENDED OR CORRECTED AT THE NEXT COM MITTEE MEETING.**

# ADRC Call Statistics Report 2014 - 2015



\* Provided Includes: Options Counseling, Follow up, Assistance with Medicaid application process, Brief or short-term services or service coordination, Youth transition support, Enrollment Consultation, Disenrollment Consultation and Assistance/Referral for health promotion or information

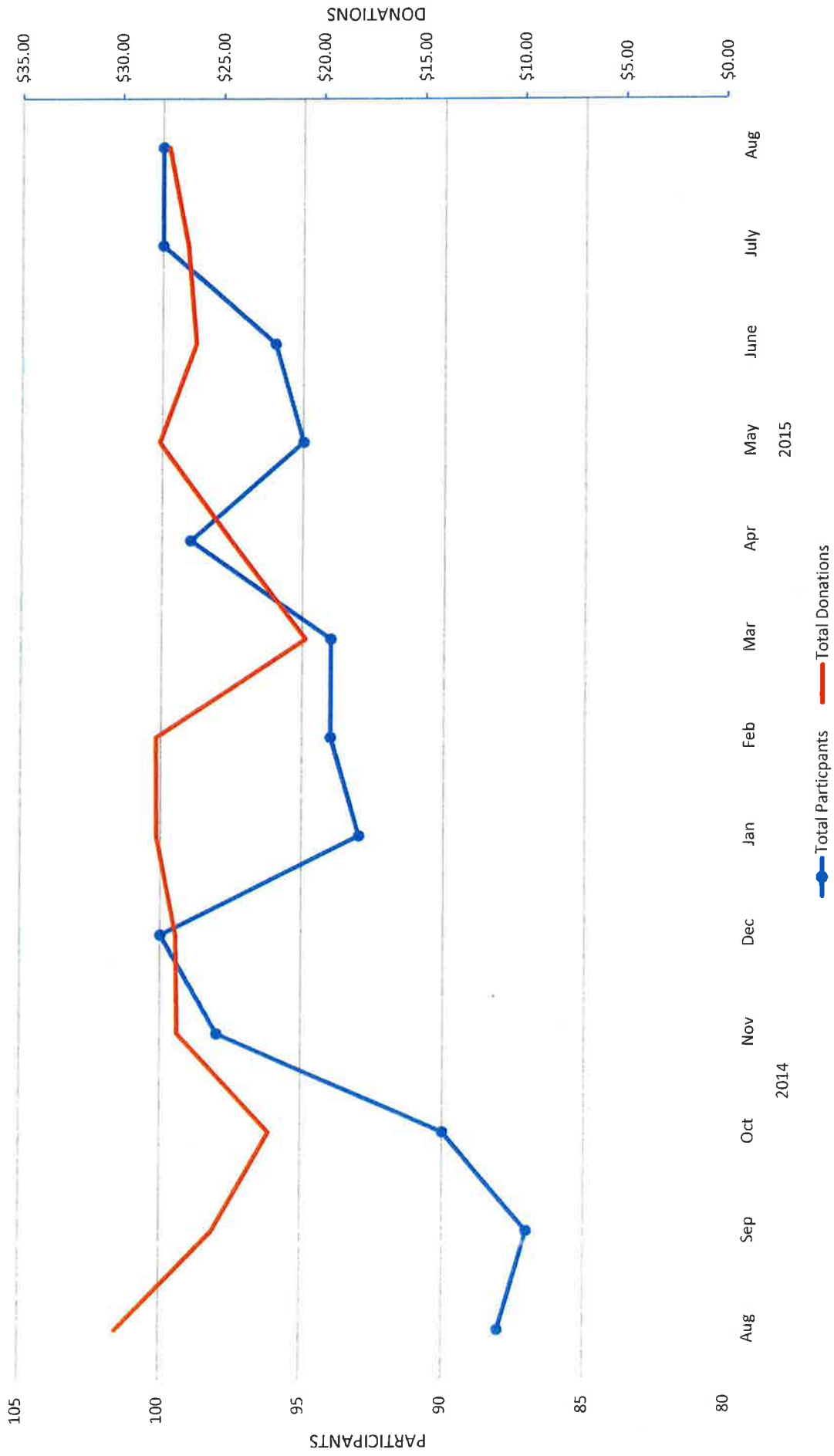
\* Referred Includes: Economic Support, Financial-Related needs other than economic support, Private Pay Service Options, Mental Health Services and Substance Abuse Services

## DINING CENTER COMMENTS

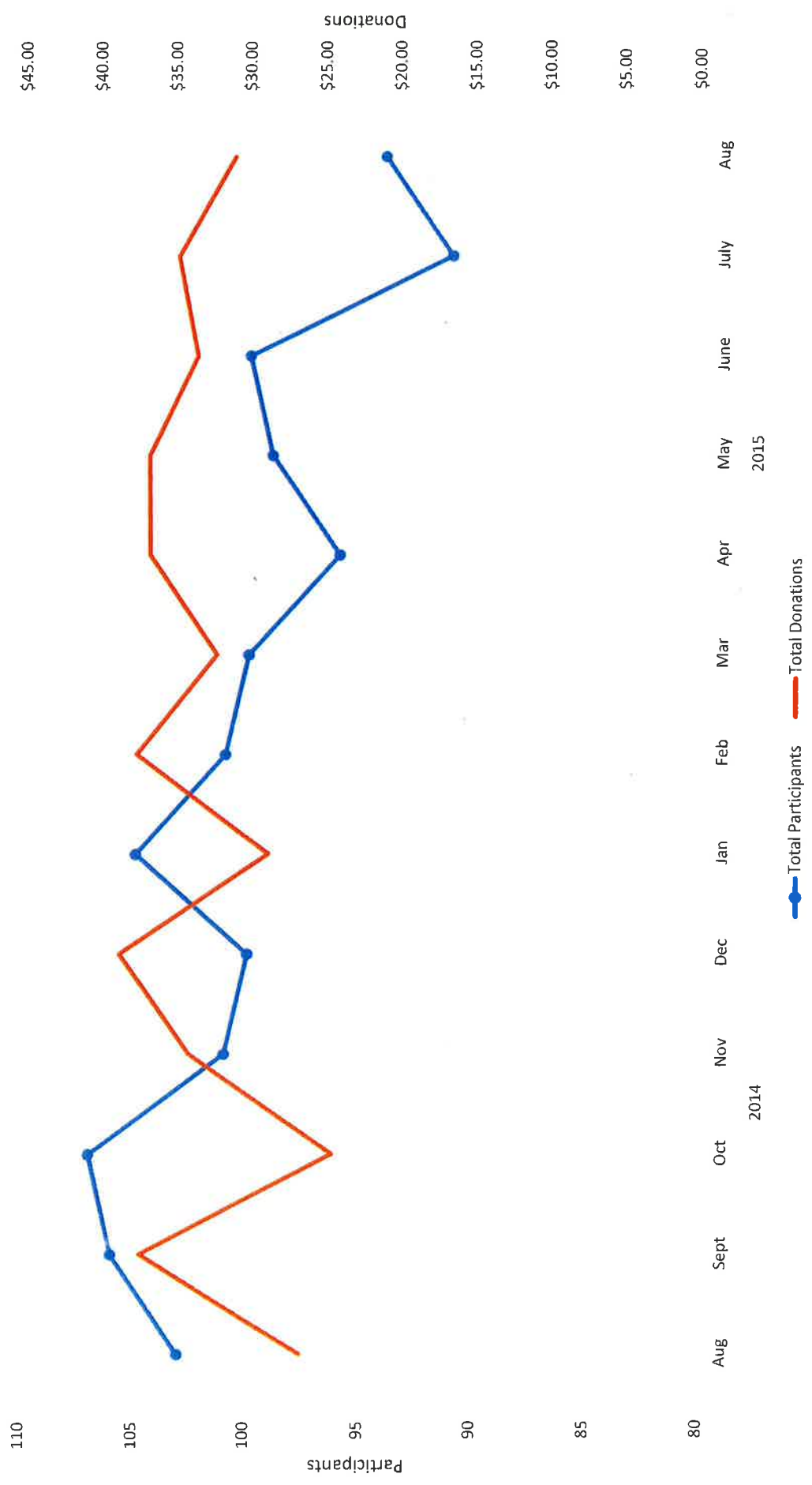
*August 2015*

August	3	Randolph	The Baked Spaghetti meal was loved by all!
	6	Mayville	The Pepper Steak meat was tough and hard to chew.
	6	Randolph	The Pepper Steak was very tender and good tasting! Au Gratin Potatoes were a nice change!
	12	Randolph	The dining center participants enjoyed the Ham Rolls and squash!
	13	Bay Shore	People enjoyed the liver and onions.
	13	Randolph	The Liver and Onions was enjoyed!
	13	Watertown	A few dining center participants commented the Escalloped Potatoes were too peppery. Liver is not well liked here.
	17	Bay Shore	The Pork Loin and carrots were tough.
	17	Hustisford	The Pork Loin was tough. Usually it's more tender.
	18	Bay Shore	The Ambrosia Dessert was very good!
	18	Randolph	The dining center participants liked the Ambrosia Dessert!
	19	Randolph	The Peach Slices were enjoyed and said they tasted fresh and not canned.
	20	Randolph	Delicious salmon loaf.
	21	Horicon	Had complaints that the petite bananas are never ripe. They let them sit a few days to ripen but then then don't taste good.
	21	Randolph	Had complaints about the green bananas. However, the Manager would rather give them green than overripe ones.
	24	Mayville	The dining center participants liked the German Potato Salad!
	24	Randolph	The Beef Frank on a Bun meal was a nice change!
	26	Bay Shore	The Baby Red Potatoes were water logged.
	27	Bay Shore	A few people thought the dessert was too sweet.
	27	Randolph	Very tender chicken. The potatoes were a little dry.

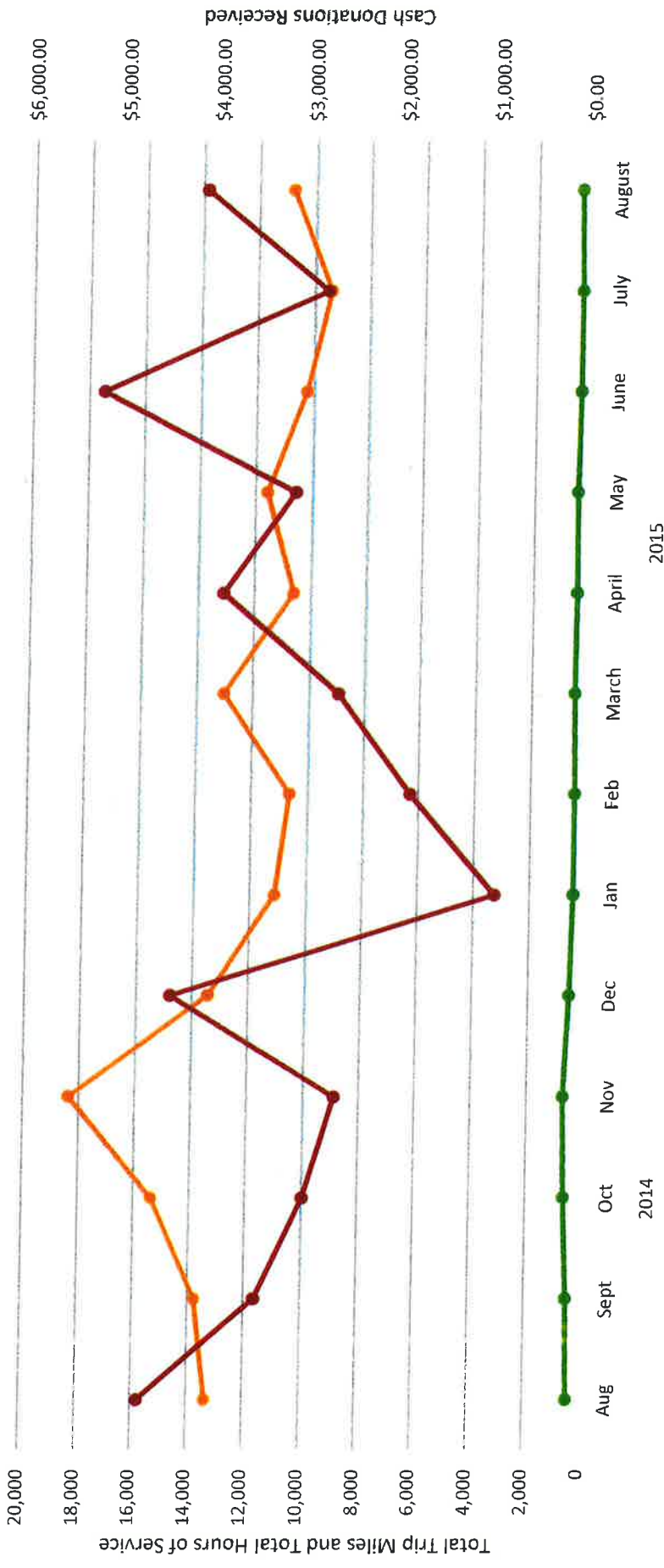
2014 - 2015 Congregate Meal Site Participants and Donations



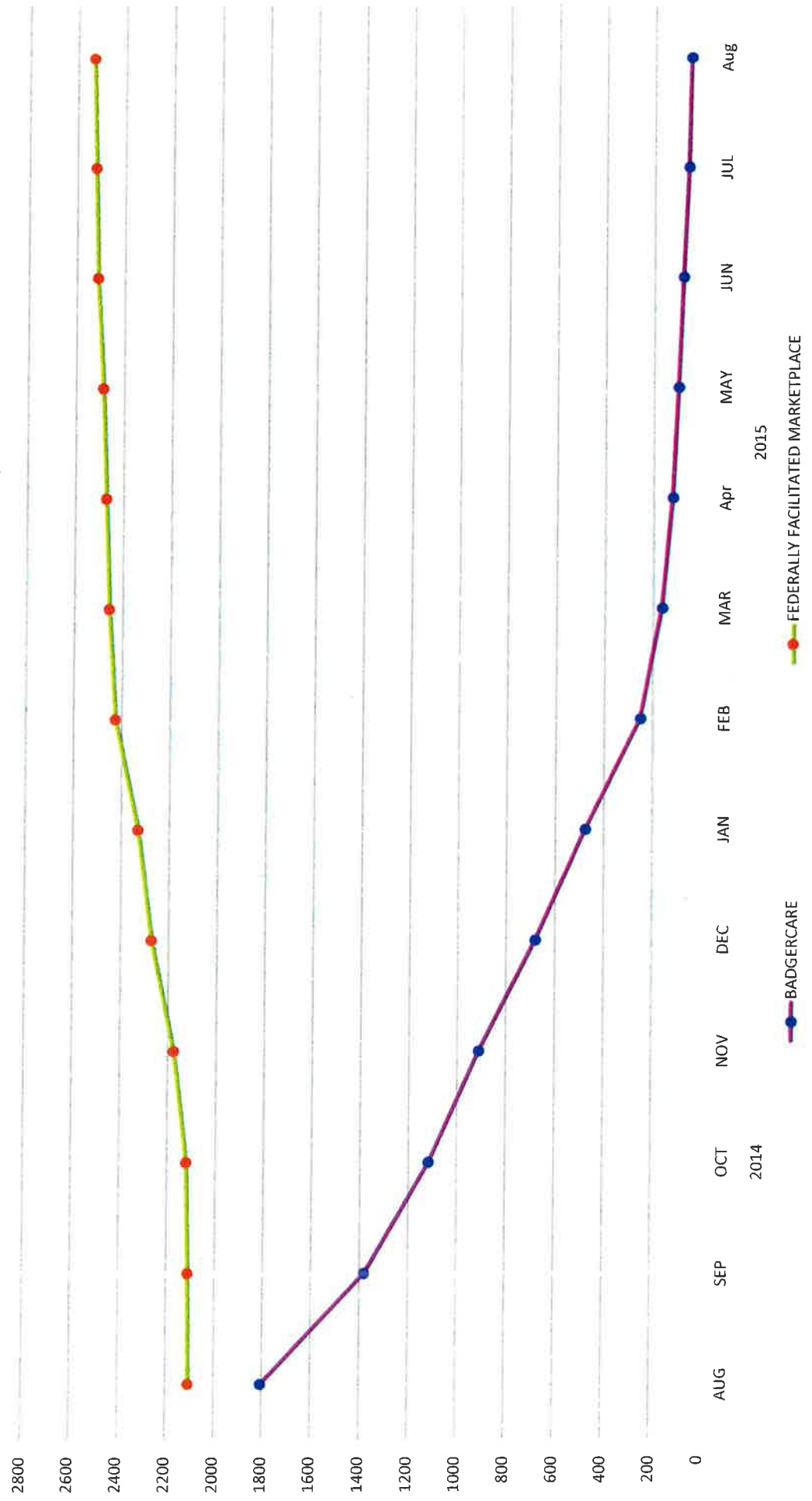
2014 - 2015 Home Delivered Meal Participants and Donations



# Volunteer Drivers 2014 and 2015

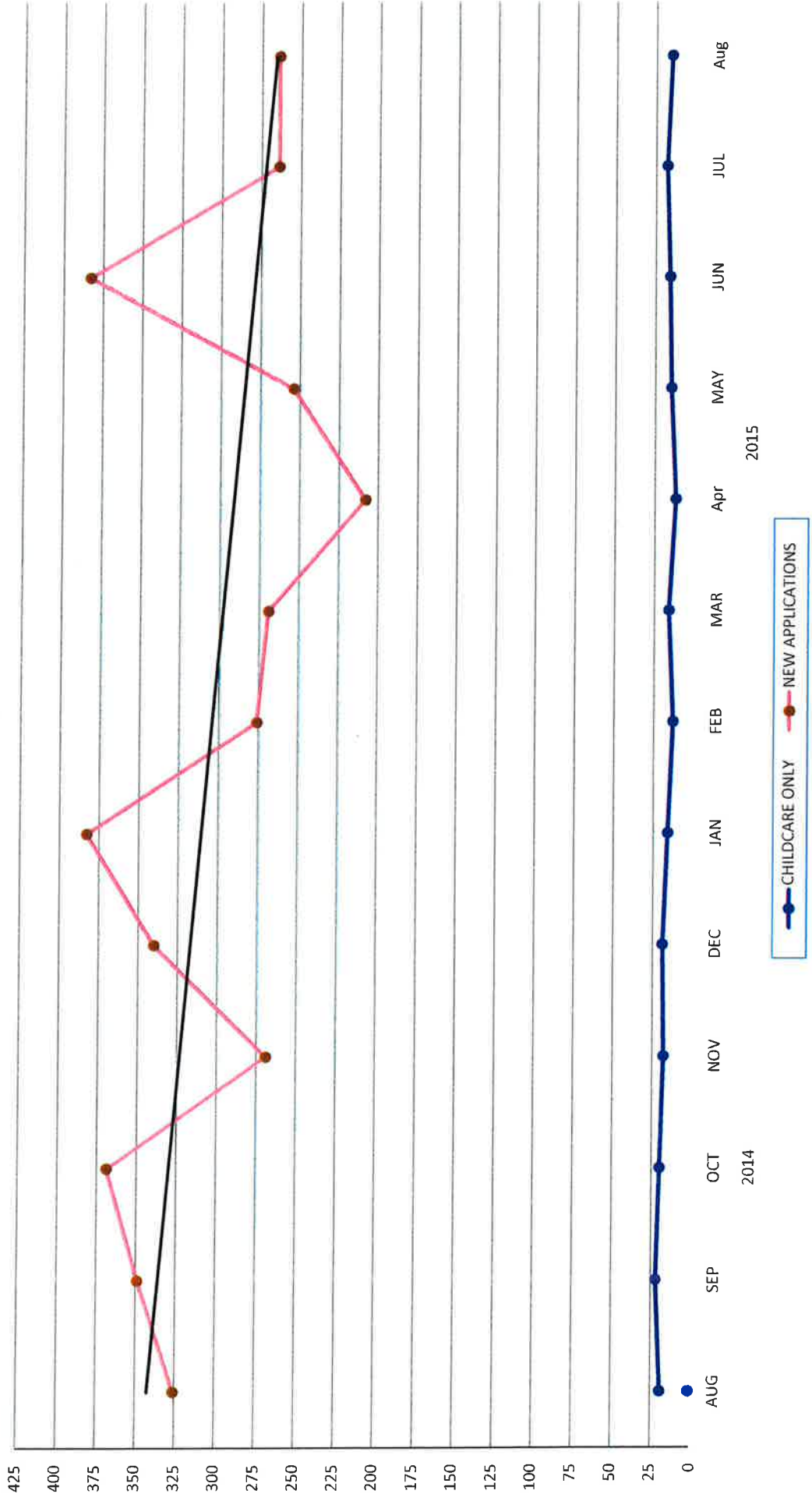


### Dodge County Economic Support 2014 - 2015 Healthcare Caseloads (Unduplicated)

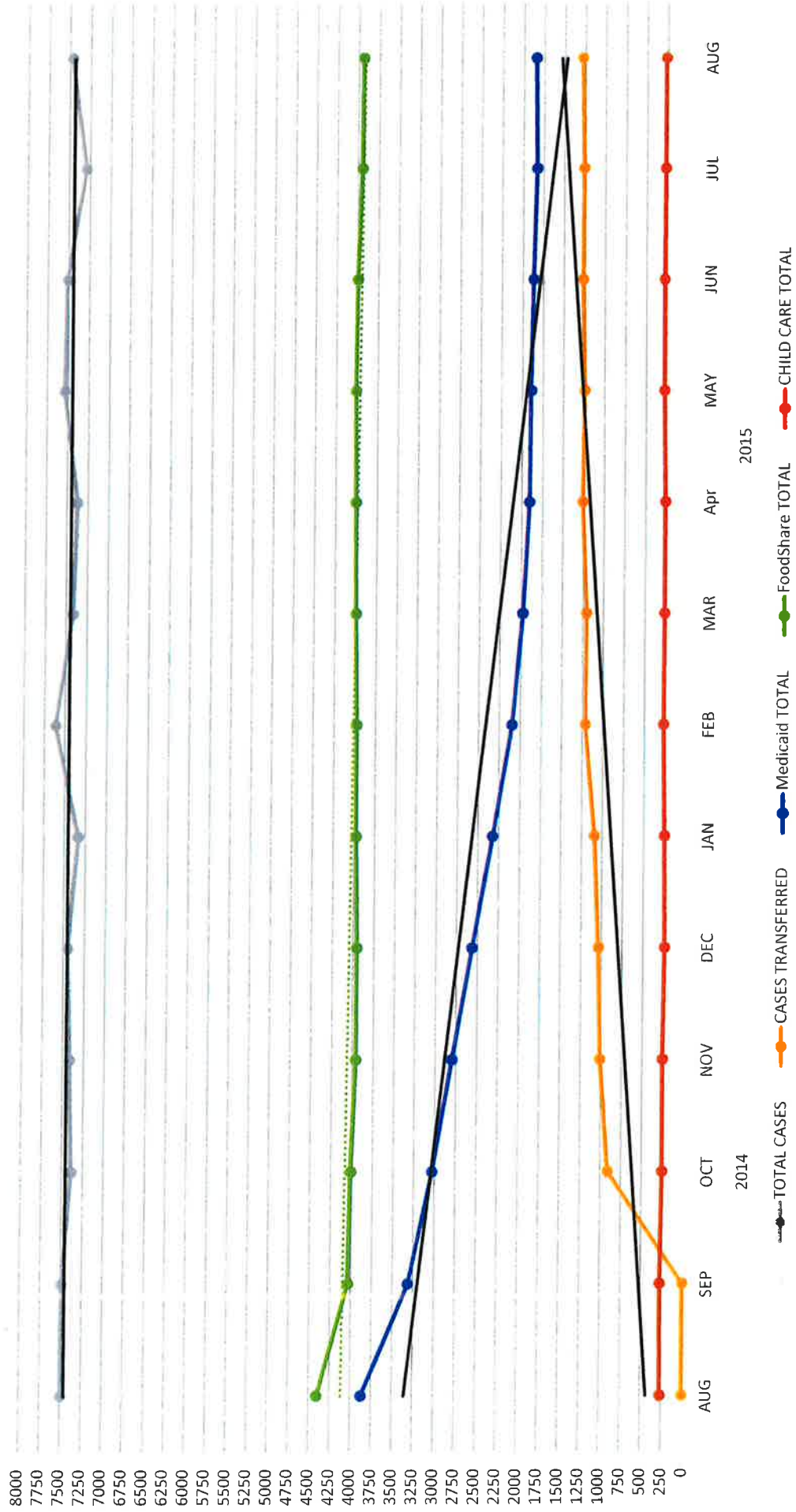




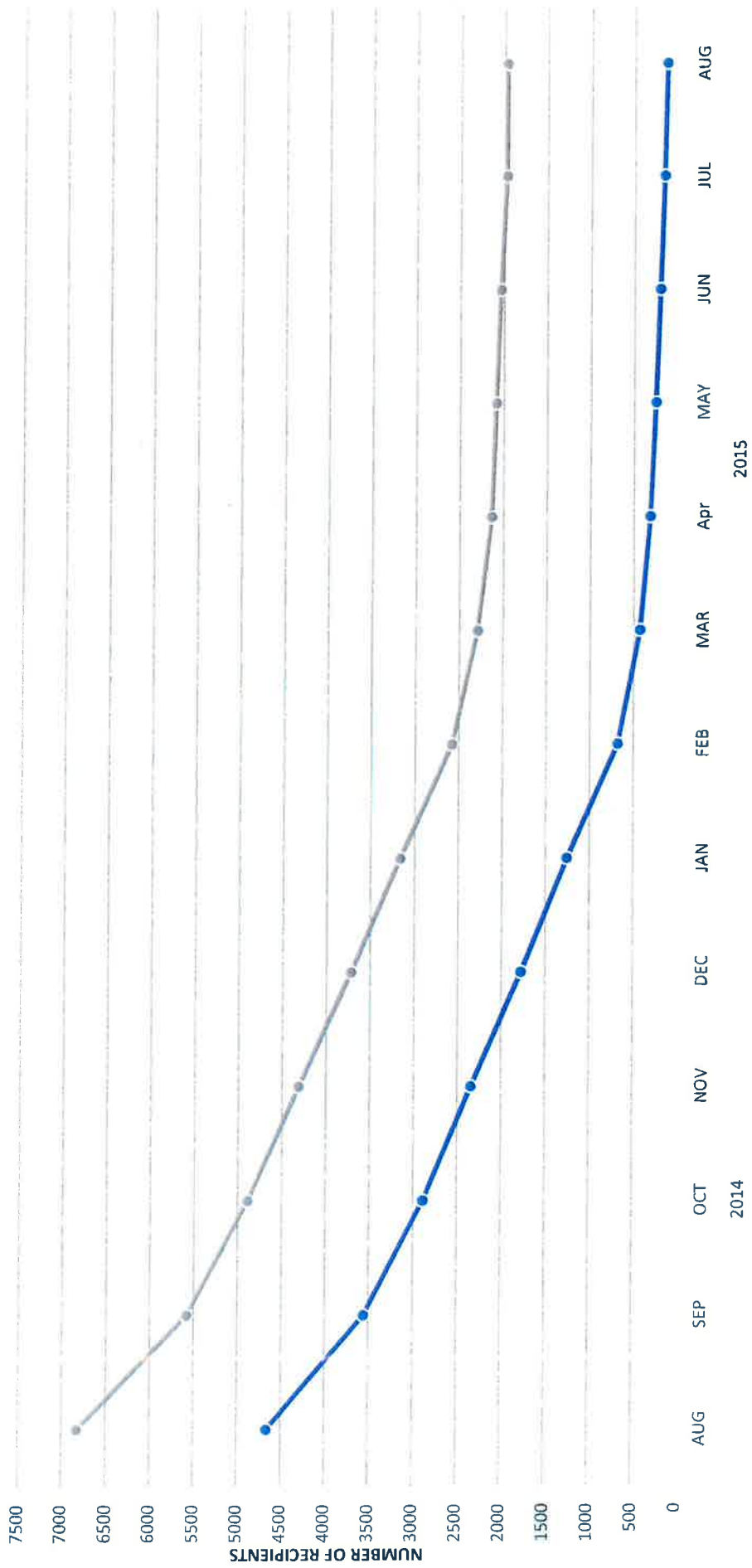
Dodge County Economic Support  
 2014 - 2015 Child Care Only & New Application Caseloads (Unduplicated)



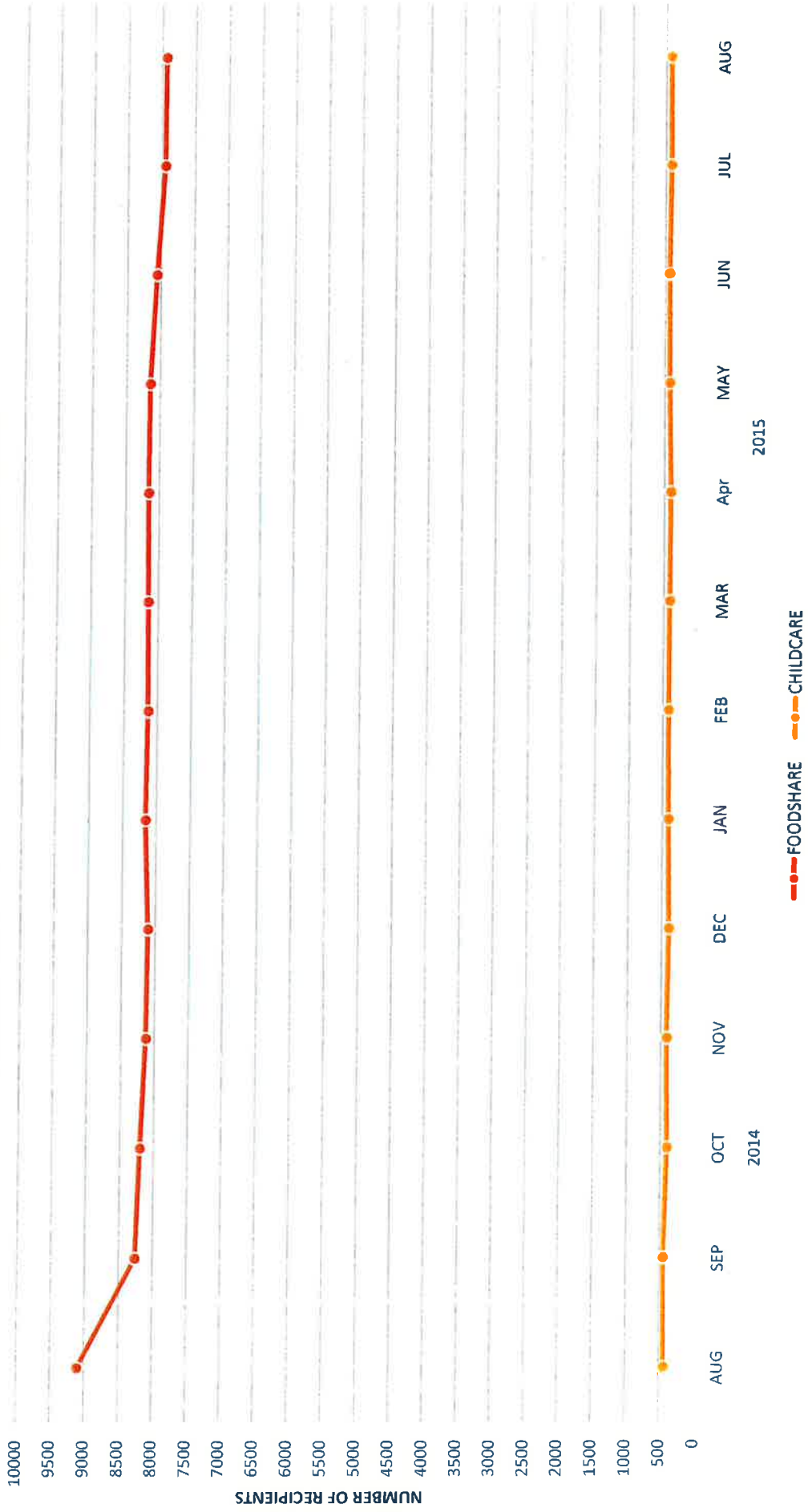
## Economic Support Caseload Totals 2014 - 2015



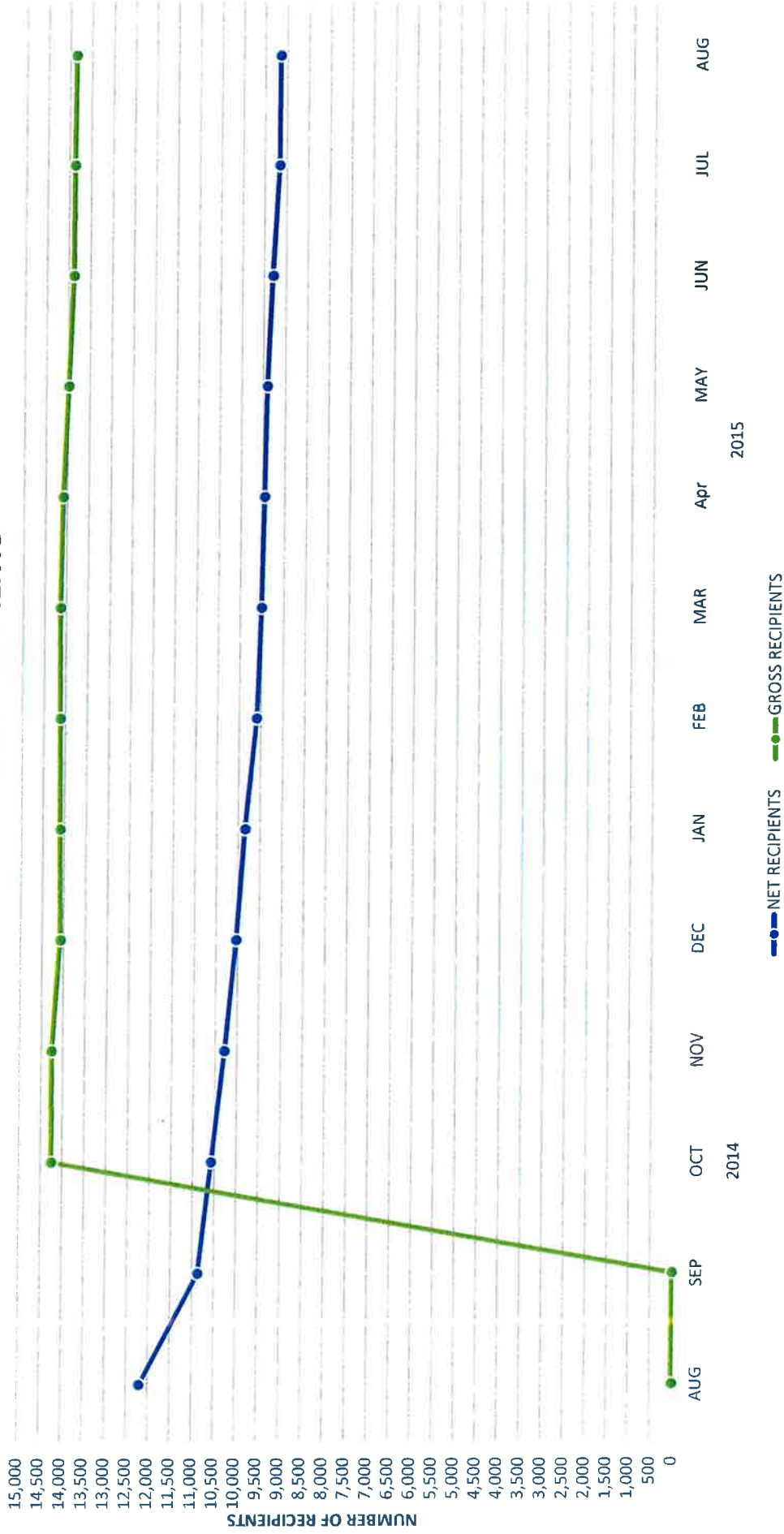
## 2014 - 2015 TOTAL ECONOMIC SUPPORT RECIPIENTS SERVED MONTHLY IN BADGERCARE & MEDICAID



## 2014 - 2015 TOTAL ECONOMIC SUPPORT RECIPIENTS SERVED MONTHLY IN FOODSHARE & CHILDCARE



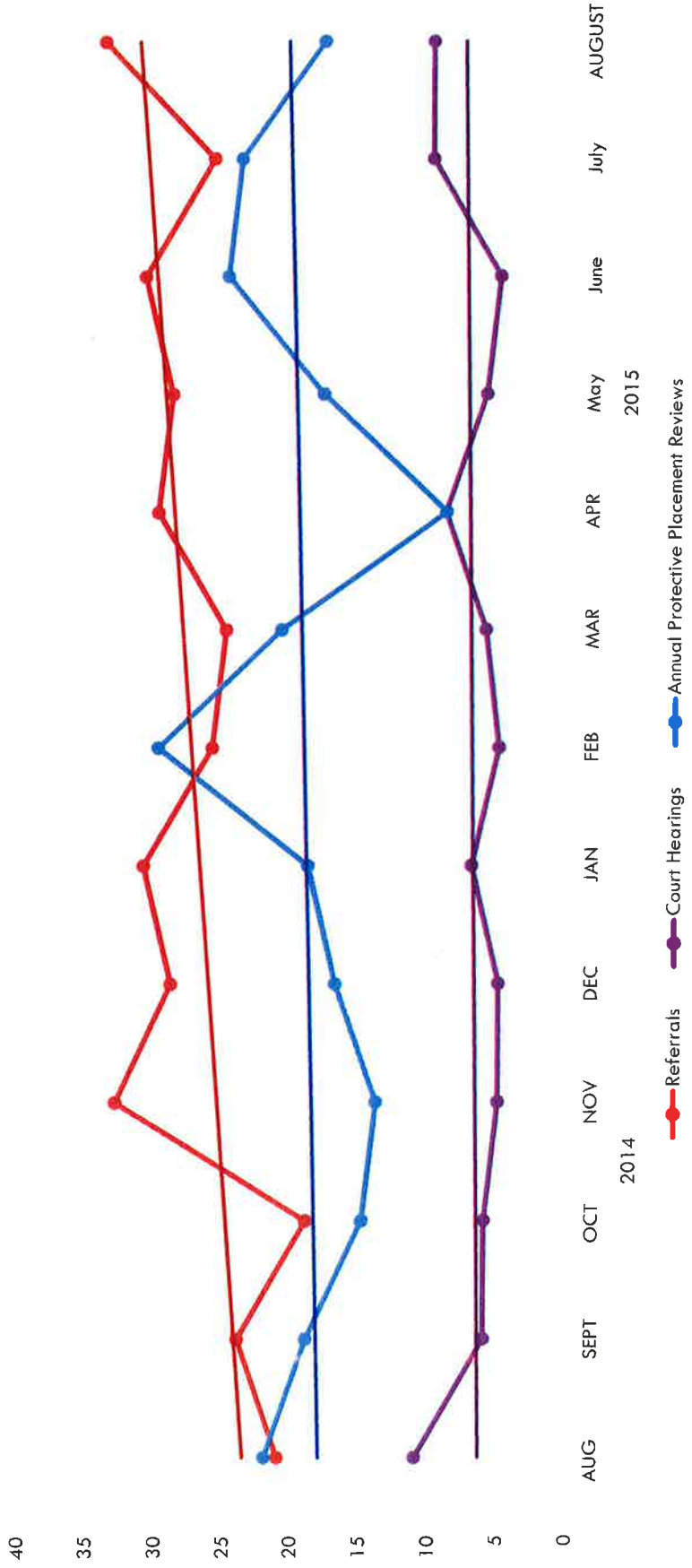
## 2014 - 2015 TOTAL ECONOMIC SUPPORT NET AND GROSS RECIPIENTS



**Net Recipients:** This is the number of county residents Dodge County staff work with.

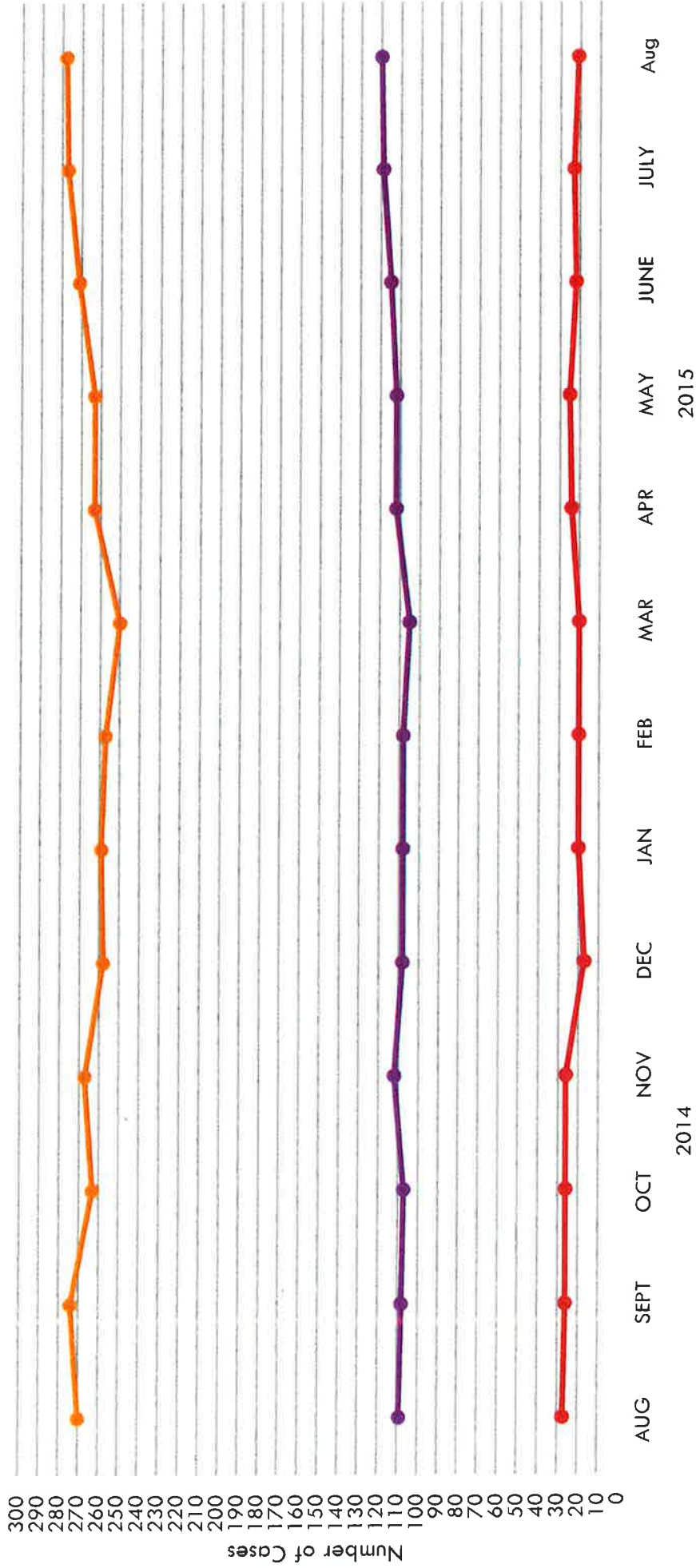
**Gross Recipients:** This is the number of county residents receiving assistance which includes those handled by other counties in the consortia

# 2014 & 2015 Adult Protective Services Long Term Support Report

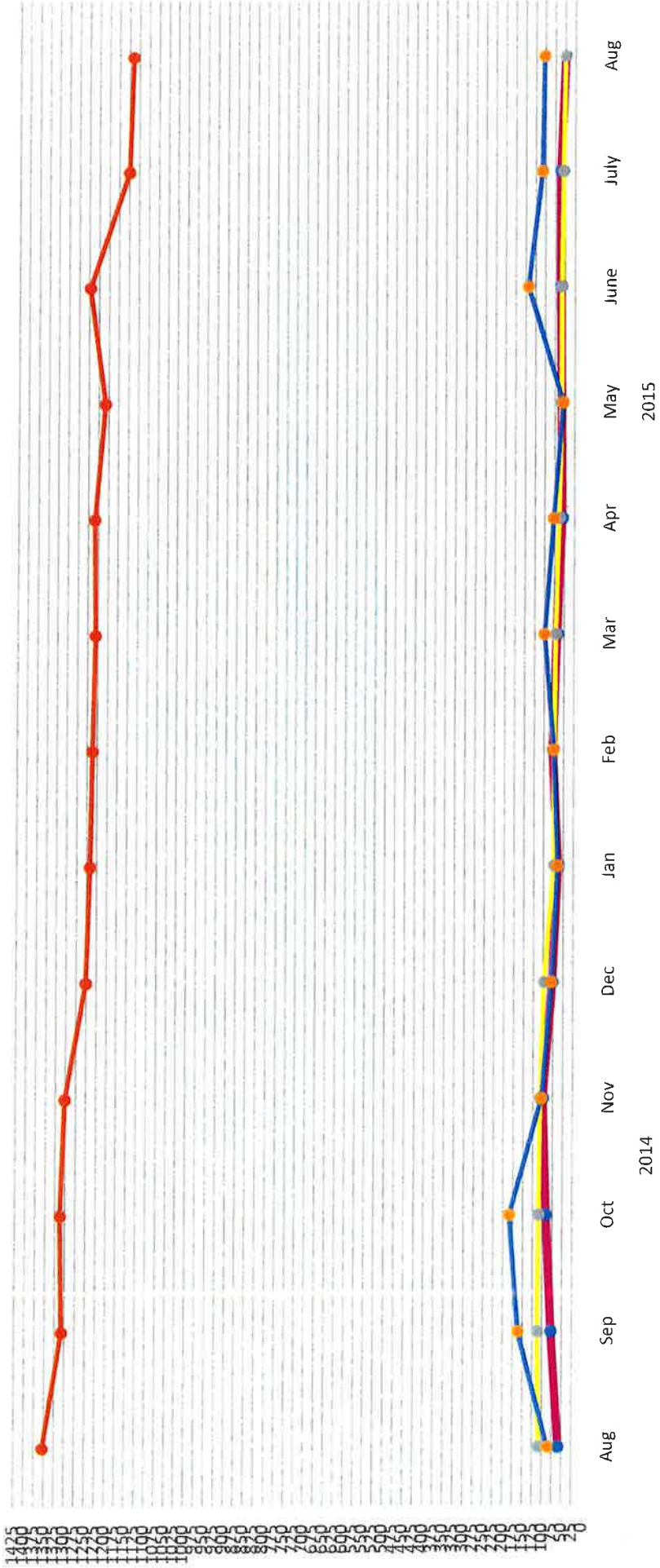




# 2014 - 2015 APS Long Term Support Caseload Report



## 2014 - 2015 Public Health Statistics



● Programs for Children    
 ● Programs for Children and Families    
 ● Programs for Women    
 ● Programs for All Residents

**Programs for Children:** Fluoride Varnish, Health Check (MA), Infant Home Visits (nonMA), Blood Lead Level Screening, # of levels > 5

**Programs for Children & Families:** Birth Certificate packets, Car Seat Safety Inspections, Car Seat Distribution, Cribs for Kids®, First Breath, Well Baby Clinic, WIC Monthly Caseload avg

**Programs for Women:** Pregnancy Tests, PreNatal Care Coordination, Well Woman Program, WIC Breastfeeding Peer Support Visits

**Programs for All Residents:** Communicable Disease, Environmental Health Services, Health Education (groups), Immunization Clients, Partner Counseling & Referral, Partner Counseling & Referral, Public Health Preparedness Activities, Rabies/Dog Bites, Screenings (TB skin tests/ BP), (Hearing/Vision), TB Follow-up Activ



TO: Ken Kamps, Alyssa Schultz , Amy Booher & Jackie Vincent  
RE: Monthly Kinship Care Expenditure Report (CARS Profile 377)  
FROM: Dodge County Human Services and Health Department  
Jackie Oestreich

The reporting month is: AUGUST 2015

The 2015 Kinship Care Allocation is: \$127,939.00.  
(allowing for an average monthly expenditure of \$10,661.58)

The Kinship Care expenses for this month are: \$11,270.72

The year to date Kinship Care expenditures are: \$91,983.87  
(the year to date average monthly expenditure is \$11,497.98)

The remaining Kinship Care allocation for this year is: \$ 35,955.13  
(should monthly expenditures remain at current level we will  
end the year with a deficit of 10,036.79)

The current number of children in the program is: 49

The current number of children on the waiting list is: 4

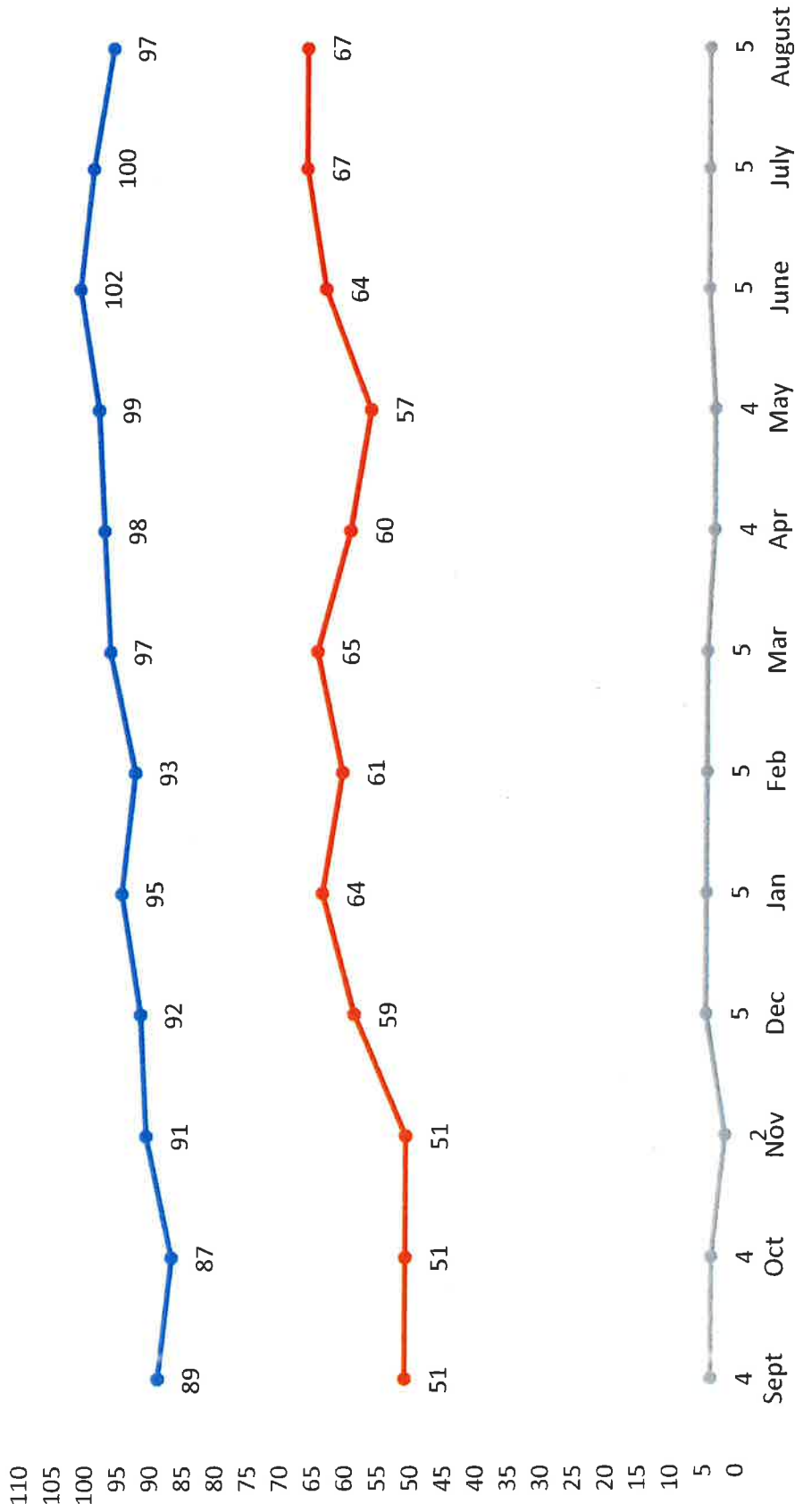
Provider refused payment, add \$329.29 back into allocation. 8/4/15

# Total CPS Access Reports



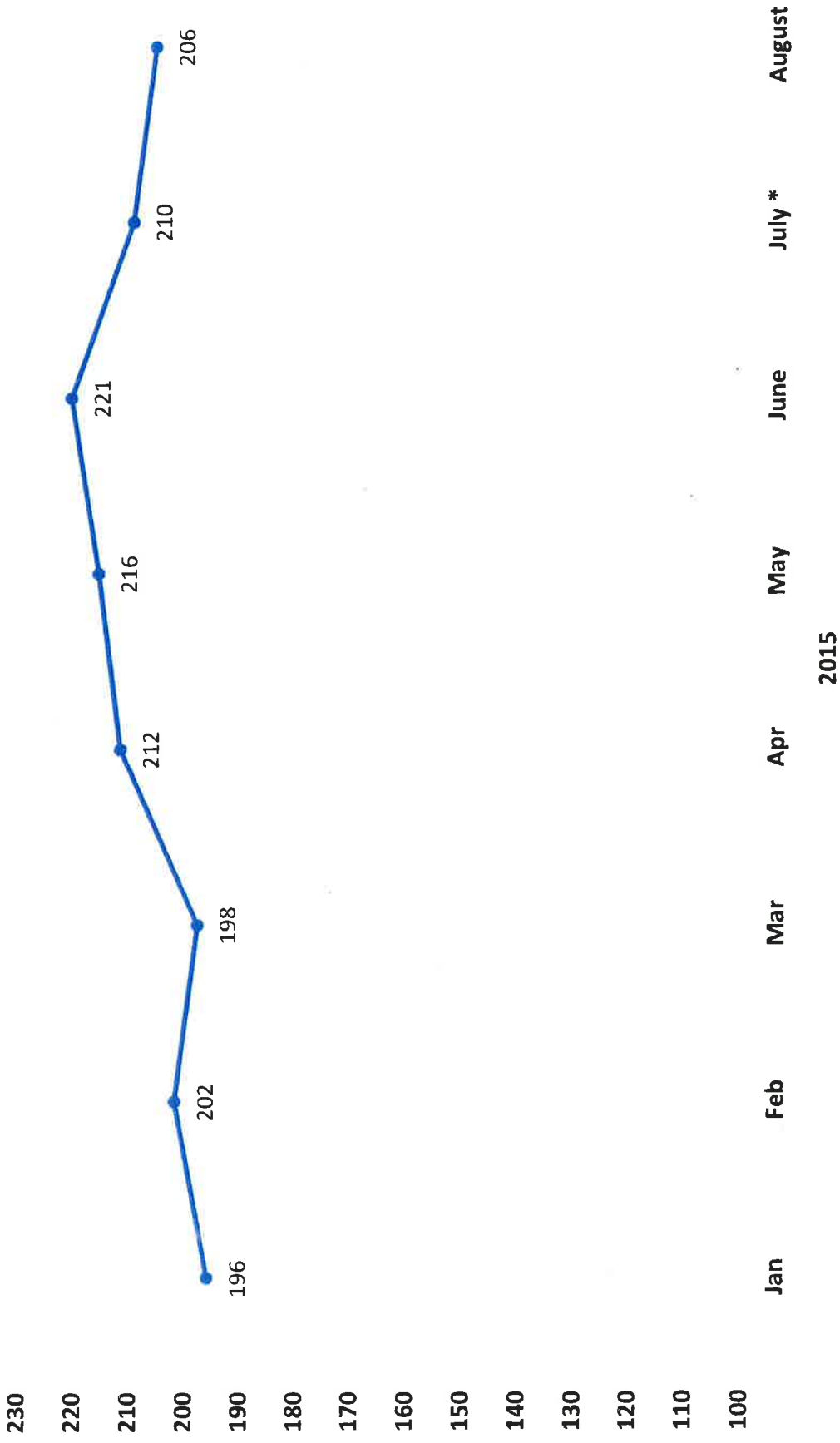
**\*\* This number includes all reports of child abuse and neglect, and families referred for services**

# CPS Ongoing Unit Data



●— # of Families Served    
 ●— # of Children in Out of Home Care    
 ●— # of Termination of Parental Rights Cases

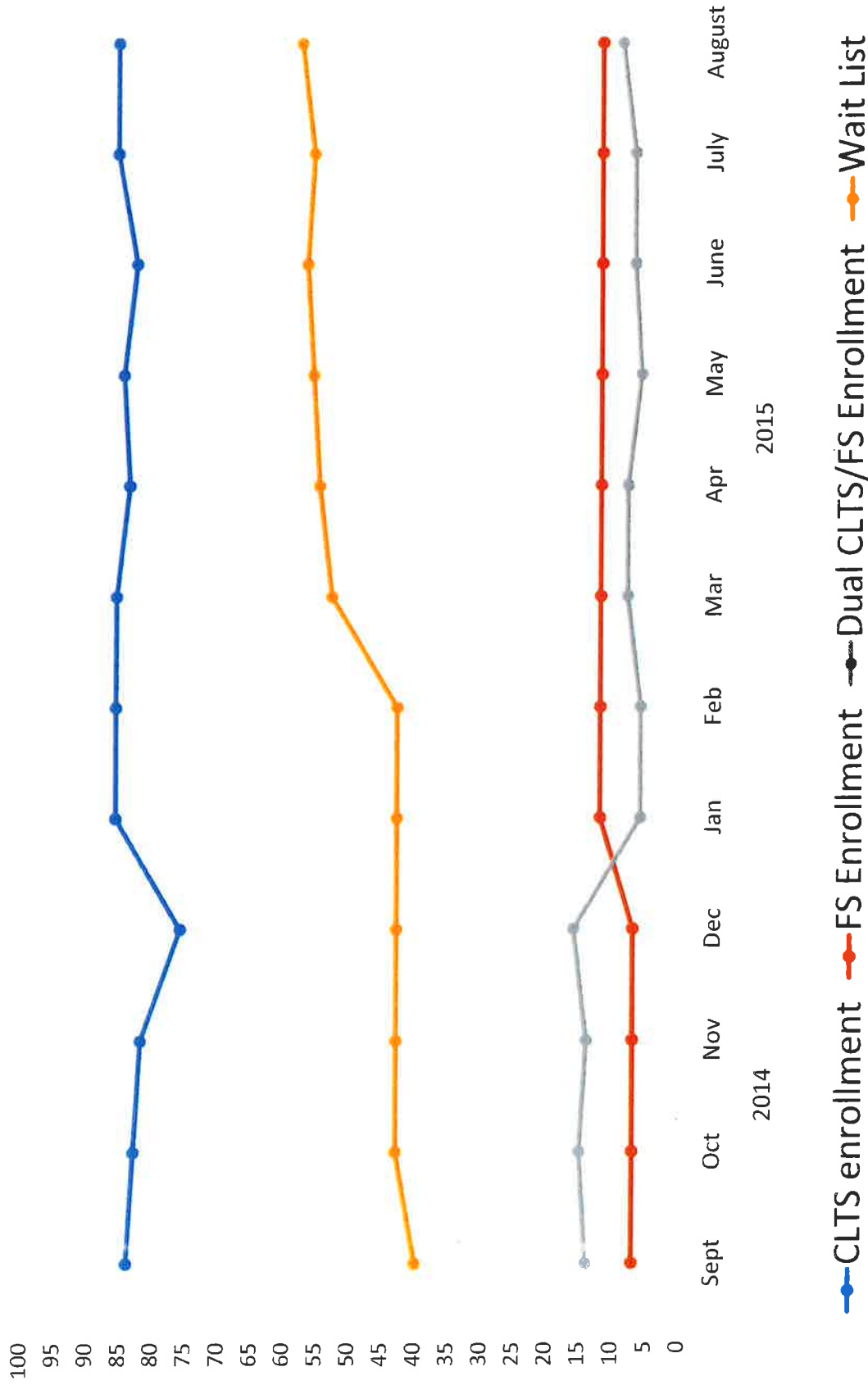
## Total # of Juvenile Justice Cases



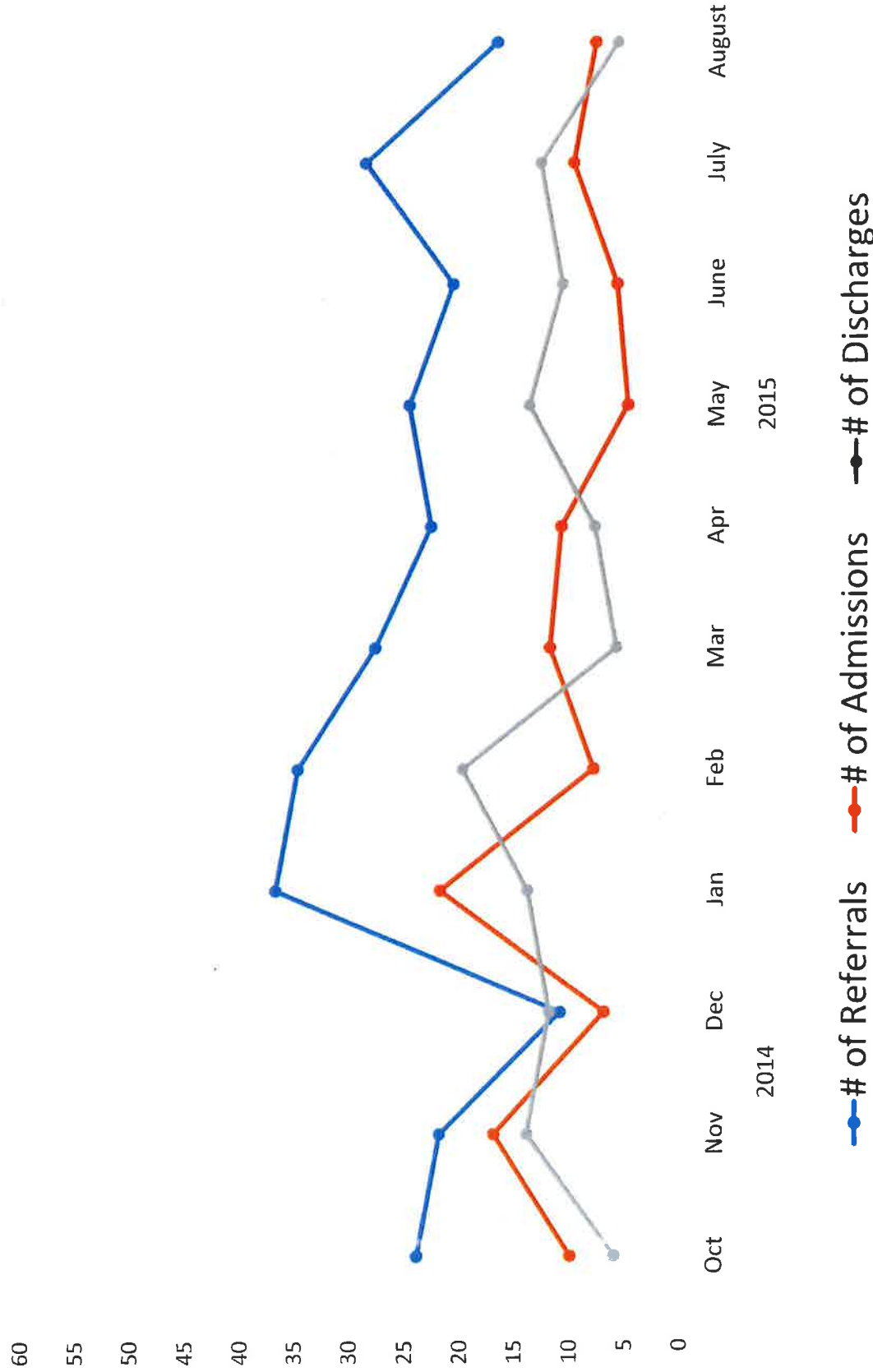
—● Total # of Juvenile Justice Cases

\*\* Juvenile Justice Cases = total # of adolescents served that have been adjudicated delinquent d/t criminal activities

# Children's Long Term Support and Family Support Data



# Birth To Three Program Data



# 2015 Children's Monthly Out-of-Home Placement Costs (# of children / \$\$\$)

	Group Homes		Institutions		Foster Care		FH Respite		Kinship Care		Monthly Total	
January	4	12,594.69	5	50,953.46	35	37,015.12	2	482.00	45	10,267.87	91	111,313.14
February	5	14,861.16	6	53,213.54	32	35,181.16	2	854.00	50	10,605.73	95	114,715.59
March	4	18,011.97	5	51,686.30	32	35,165.67	5	1,098.00	50	11,600.00	96	117,561.94
April	4	15,557.22	5	50,019.00	31	34,726.53	2	1,040.00	54	12,466.13	96	113,808.88
May	4	18,764.37	5	51,686.30	36	36,743.34	4	1,034.00	57	12,595.37	106	120,823.38
June	4	17,212.50	7	52,718.08	35	34,559.21	3	1,226.00	56	12,311.47	105	118,027.26
July	5	17,711.01	5	45,710.18	31	32,773.36	4	1,820.00	50	11,195.87	95	109,210.42
August	5	21,172.05	6	63,048.18	34	36,995.31	6	2,336.50	49	11,270.72	100	134,822.76
September												
October												
November												
December												
<b>Total 2015</b>	<b>35</b>	<b>135,884.97</b>	<b>44</b>	<b>419,035.04</b>	<b>266</b>	<b>283,159.70</b>	<b>28</b>	<b>9,890.50</b>	<b>411</b>	<b>93,313.16</b>	<b>784</b>	<b>940,283.37</b>
<b>Total Revenues/ Adj. Expenses</b>										<b>-119,450 (thru June)</b>		<b>=686,010.61</b>
<b>Average 2015</b>	<b>4.4</b>	<b>16,985.62</b>	<b>5.5</b>	<b>52,379.38</b>	<b>33.2</b>	<b>35,394.96</b>	<b>3.5</b>	<b>1,236.31</b>	<b>51.4</b>	<b>11,664.14</b>	<b>98</b>	<b>117,535.42</b>
<b>Total 2014</b>	<b>59</b>	<b>233,797.48</b>	<b>89</b>	<b>810,877.92</b>	<b>387</b>	<b>506,017.21</b>	<b>37</b>	<b>13,194.00</b>	<b>558</b>	<b>127,353.87</b>	<b>1130</b>	<b>1,682,851.48</b>
<b>Average 2014</b>	<b>4.9</b>	<b>19,483.12</b>	<b>7.4</b>	<b>67,573.16</b>	<b>32.2</b>	<b>42,168.10</b>	<b>3.1</b>	<b>1,099.50</b>	<b>46.5</b>	<b>10,612.82</b>	<b>94.2</b>	<b>140,237.62</b>

Number of placements are duplicated month-to-month.

\* Total revenues are primarily a combination of collections from Child Support owed and Social Security benefits, as well as Youth Aids funding.

### Clinical Services Program Statistics 2015

Programs	Jan	Feb	Mar	Apr	May	June	July	Aug	Sept	Oct	Nov	Dec	Total 2015
<b>Outpatient MH Services</b>													
Admissions	31	30	37	40	26	38	28	29					
Discharges	25	21	25	25	31	58	34	20					
End of month census	878	887	899	914	909	924	904	881					
Psychiatry	524	527	537	540	547	545	550	586					
Therapy	354	360	362	374	362	379	354	332					
Average caseload size	89	90	91	94	91	95	89	83					
<b>Outpatient AODA Services</b>													
Admissions	28	45	43	27	18	26	32	36					
Discharges	27	22	30	21	35	41	24	23					
End of month census	196	219	232	238	221	216	207	184					
Average caseload size	65	55	58	60	55	54	41	37					
Intoxicated Driver Program Assessments (IDP)	45	47	53	39	27	50	38	44					
IDP End of Month Census	284	331	328	360	387	350	395	380					
<b>Crisis Response Services</b>													
Hospitalizations – Total Days		195	53	49	36	50	156						
Emergency Detentions		21	7	12	13	11	18						
Diversions		19	47	67	70	72	48						
Protective Custody		8	2	5	5	3	8						
<b>Community MH Programs</b>													
Community Support Program (CSP)	54	54	53	53	53	51	52	53					
Comprehensive Community Services (CCS)	32	32	33	34	33	32	34	37					
Targeted Case Management (TCM)	33	32	34	34	35	35	33	35					