

Dodge County Sheriff's Department



2004 ANNUAL REPORT

To: The Honorable Members of the Dodge County Board of Supervisors

Dear Chairman Kottke and Members of the Board:

I am pleased to present the 2004 Dodge County Sheriff's Department annual report. I am presenting this report in the absence of Sheriff Todd Nehls, who is serving our country in Afghanistan. I have dedicated the cover of this report to Sheriff Nehls in recognition of his continued dedication to our community and our country. The Dodge County Detention Facility continues to be viewed by its peers as a model in its design, operation, and efficiency. In 2004, the Dodge County Detention Facility housed a significant number of contract inmates, primarily from the federal government. This has generated millions of dollars of revenue for the County. The Dodge County Detention Facility's Programs continue to evolve in providing services back to our community in the form of work crews. These work crews were most visible and appreciated in the natural disaster cleanups in Waupun and Randolph last spring.

The Dodge County highways were the safest in history, tied with the lowest number of highway fatalities on record. The number of deaths on our highways for 2004 was 12. This compares to 19 in 2003 and 29 in 2002. It is difficult to identify any one reason for the reduction of fatalities, but the focus of the department on enforcement of our traffic laws must be considered a contributing factor for the reduction. This combined with the educational programs delivered to our motoring public, as well as identifying and addressing engineering issues related to highway safety, makes for a well rounded highway safety program.

This past year the Sheriff's Department applied, received, and successfully administered funding for our illegal drug efforts. This is the first time in many years Dodge County has participated in this note worthy program.

**To: The Honorable Members of the Dodge County
Board of Supervisors (cont.)**

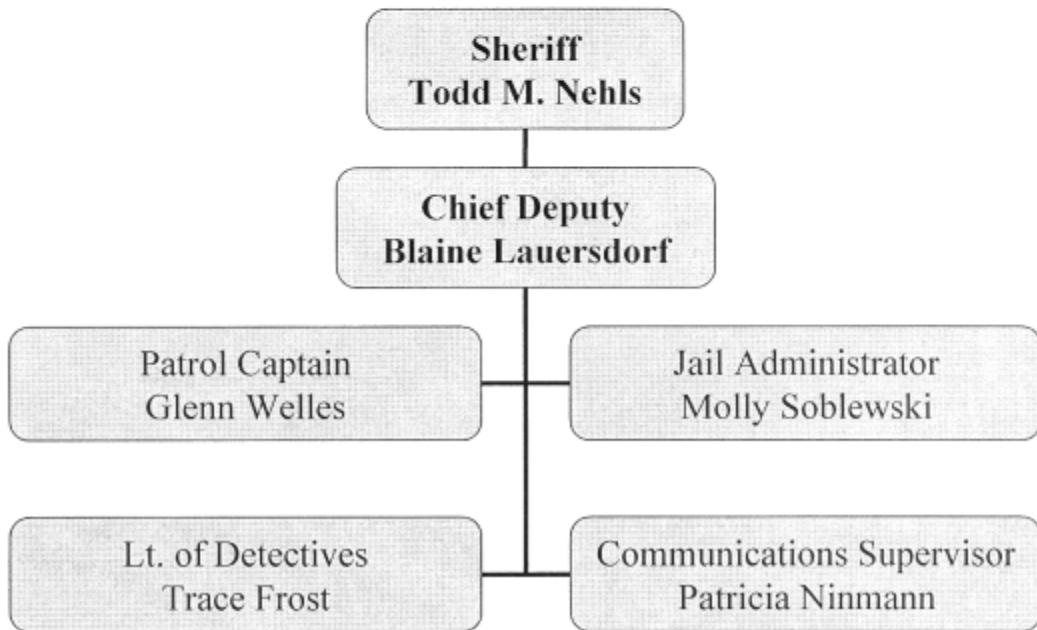
As successful as 2004 has been, we are also excited about 2005. The future hosts new Sheriff's Department facilities and a state-of-the art 911 Center. The entire "team" continues to remain focused and professional.

I would like to thank the County Board, the Law Enforcement Committee, and the dedicated employees of the Sheriff's Department for their support. We feel we have delivered effective and efficient service to our community in the past year. This would not be possible without the continued support of the Dodge County Board of Supervisors and the many other county departments that support our operation during the course of the year.

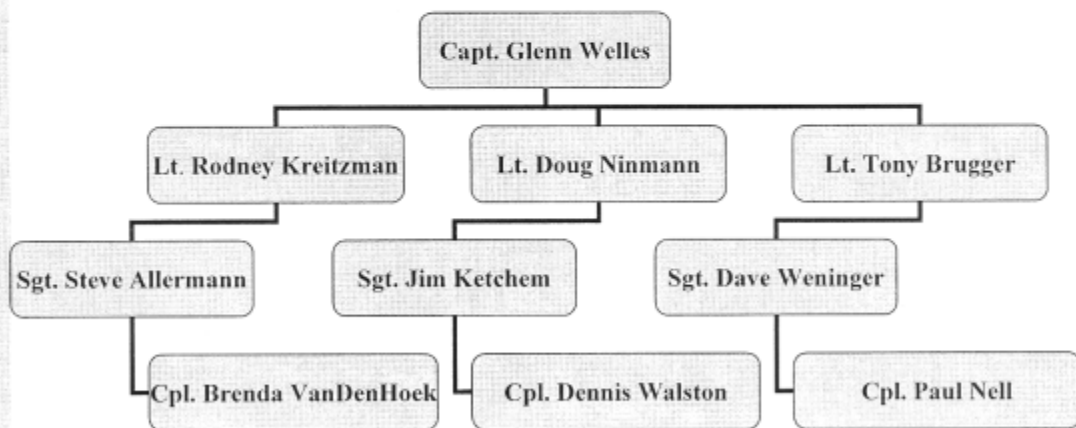
Sincerely,

Blaine Lauersdorf
Chief Deputy

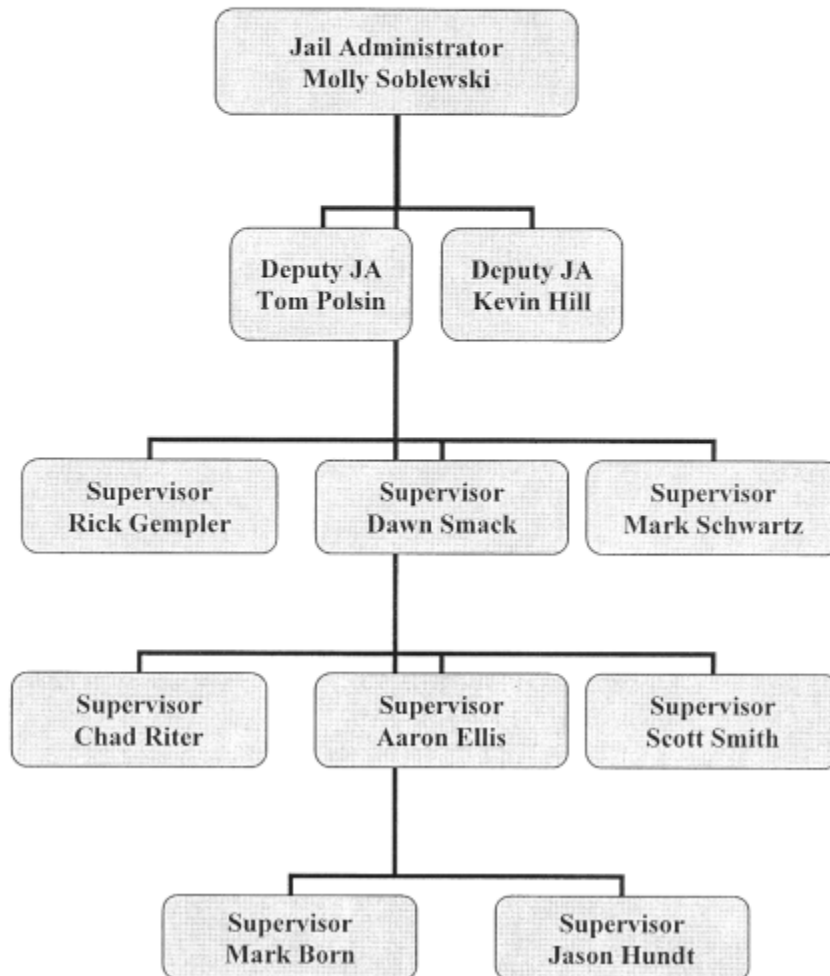
Chain of Command



Patrol Division Chain of Command



Jail Division Chain of Command



Patrol Division

The Patrol Division experienced a very significant achievement in 2004. This was the lowering of fatalities on Dodge County highways by 37 percent from 2003. The last time only twelve (12) people lost their life on our highways was 1997. Patrol deputies are major role players through proactive daily enforcement and visibility. The motoring public must perceive that deputies are "everywhere" and that they will make a traffic stop if a violation is detected. That is the effort that is necessary to save lives.

The division improved it's capabilities in two areas this past year. The first is the addition of a third deputy trained and certified as a Drug Recognition Expert to detect motorists who are driving while impaired by substances other than alcohol. The second was the purchase of a state-of-the-art instrument to document traffic crash scenes. The data collected can be stored and later used to reconstruct not only the post-crash scene but also the sequence of events just prior to the crash and the crash itself. The instrument, called a Total Station, was purchased using a grant from the state Bureau of Transportation Safety. All members of the Crash Investigation Team have been trained to set up and use the Total Station. This unit is available to any police agency in the county and also outside Dodge County. Upon request, one or more deputies will respond to a crash scene.

Glenn E. Welles
Captain

Patrol Division- Traffic Trends

Accidents:	2000	2001	2002	2003	2004	Percent Change	00-05 Average
Fatal	22	14	28	18	11	-39%	18.6
Fatalities	24	15	29	19	12	-37%	19.8
Injury	356	235	242	239	264	10%	267.2
Car/Deer	483	341	403	521	358	-31%	421.2
Motor-cycle	12	13	9	22	11	-50%	13.4
TOTAL:	1473	1032	1135	1264	1137	-10%	1208

Patrol Division- Traffic Trends

Citations:	2000	2001	2002	2003	2004	Percent Change	00-04 Average
OWI	214	205	232	302	429	42%	276
Underage Drinking	213	177	147	191	233	22%	192
Speeding	1388	2469	1478	2112	2202	4%	1930
Safety Belt	175	213	101	343	385	12%	243
Fail to Stop	170	132	96	143	158	10%	140
OAR/OAS	201	205	261	320	391	22%	276

Patrol Division- Recreation Patrol

■ Boat

Hours Patrolled	41
Citations	6

Snowmobile

Hours Patrolled	76.5
Citations	40

ATV

Hours Patrolled	26
Citations	11

DRE

Evaluations	53
-------------	----

Inspections

Vehicle	165
---------	-----

In 2004 we started doing a research study for the State doing ROSITA samples of saliva on Impaired drivers. To date we have done 36 samples in Dodge County and the rest of the State combined is at 57 samples including Dodge County. We have also added another DRE to our staff, for a total of 3.

Dodge County Detention Facility

The Dodge County Detention Facility continues to operate at peak efficiency. This is due to the dedication and experience of the entire staff. We were faced with an unfortunate set of circumstances in the fall of 2004 which lead to a temporary lay-off of 11 employees for 10 weeks. Since that time the management staff has focused attention to contract bed diversity. Even with the layoff, the facility increased revenues by \$1.2 million.

We continue to explore additional program opportunities within the facility along with inmate labor requests from the community.

The staff receives yearly training to maintain their skills as correctional officers. They are a group of exceptional employees dedicated to the mission of the facility. Their supervisors and administrators oversee day-to-day operations and manage the long range tasks necessary to fulfill our goals and objectives.

The community is always welcome to request a tour. The staff is proud of their profession and willing and eager to show off the facility where they work.

Detention Facility- Revenue/Expenses

	2001	2002	2003	2004
Revenue	2,353,798	5,212,796	5,821,024	7,028,380
Expenses	4,674,321	5,886,719	6,809,500	7,497,151
Net Levy	1,854,819	1,854,819	1,648,786	468,770

Detention Facility- 2004 Bookings

Age		
<18	35	00.68%
18-25	1505	29.30%
26-40	2380	46.33%
41-60	1170	22.78%
Over 60	47	00.91%
Total	5137	

Ethnicity		
Hispanic	1402	27.29%
Non-hisp	3735	72.71%
Total	5137	

Gender		
Male	4487	87.35%
Female	650	12.65%
Total	5137	

Detention Facility- 2004 Bookings

Type		
City	2	0.04%
Contract	76	1.48%
County	2756	53.65%
FBOP	9	0.18%
FED	467	9.09%
INS	1324	25.77%
Other	129	2.51%
PRO	365	7.11%
ST	6	0.12%
Trans in	3	0.06%
Total	5137	

Race		
White	4525	88.09%
Black	493	9.60%
Asian	72	5.00%
Other	0	00%
Native American	47	0.91%
Total	5137	

Detention Facility- 2004 Average Days in Custody

City	1
Contract	18.54
County	33.89
FBOP	54.92
FED	55.60
INS	36.50
Other	1.28
Probation	16.45
State	1.33
Transfer in	69.00

Detention Facility- 2004 Jail Transports

	Miles	Trips
USMS Milwaukee	49,426	408
USMS Madison	1,344	14
USMS Chicago	23,942	88
ICE	179,300	654
TOTAL:	254,012	1164

Detention Facility- 2004 Jail Programs

	Participants	Events
Home Monitor	192	
Work Crew	101	1576
GED	141	976
ESL	129	1422
Spanish Bible Study	323	1051
Bible Study	316	1543
Catholic Bible Study	166	683
Female Bible Study	44	162
Christian Worship	276	1282
Jumah Service	53	198
Anger Management	18	150
AA	181	698

Communications Division

The Dodge County Communications Center answers emergency, non-emergency, and other requests for service 24 hours a day, seven days a week.

Effective communication support is essential for the management of patrol, investigative and planning functions of the department. The purpose of the Communications Division is to effectively, courteously, and promptly receive and record requests for service; dispatch units; provide the department with centralized control of personnel; and facilitate field operations through the rapid dissemination of critical information by radio and telephone.

We are currently in a renovation process for a new E911 center which will incorporate state of the art equipment and software. A portion of the upgrade will provide locations for cellular callers, which represent over 80% of 911 calls.

The E911 Center consists of the following Communication Officers:

Lee Schneider	Richard Werner
Peter Kaczmarek	Daniel Stiemsma
Barb Mullin	Jaime Buelter
Cheryl Sprengel	Jennifer Welch
Nicole Weikert	David Zirbel
Christine Churchill	

Communications Division- Calls for Service 2004

■ Dodge County	21,859
■ All Other PDs	14,082
■ Fire Departments	685
■ EMS/FRU	3,441
■ Total	40,067

Communications Division- 3 Year trend

	2002	2003	2004
Dodge County	15,324	22,072	21,859
Other PDs	12,218	13,311	14,082
Fire Departments	616	815	685
EMS/FRU	2,713	3,059	3,441
Dodge County Sheriff			
Administration	384	412	299
Chaplain	10	21	24
Communications	335	593	760
Patrol Deputies	12,953	19,407	18,883
Civil Process/Transport	722	905	1,134
Dodge County Detention	457	734	759
TOTAL	14,861	22,072	21,859
Landline 911 Calls		5,690	4,188

Communications Division- Calls by Reporting District Law Enforcement

DEPARTMENT	2002	2003	2004
Twn. Beaver Dam	217	391	443
Beaver Dam	80	101	217
Brownsville	455	496	413
Clyman	4	50	103
Columbus		24	13
Emmet/Lebanon	344	269	329
Twn. Fox Lake	222	216	293
Fox Lake	1019	1261	1094
Horicon	1737	1803	1713
Twn. Hustisford	47	48	12
Hustisford	226	210	214
Iron Ridge	293	192	251
Juneau	1181	1136	1250
Lomira	1536	2030	1911
Lowell	36	103	113
Mayville	1449	1611	1800
Neosho/Rubicon/Ashippun	548	464	621
Other	42	75	202
Randolph	1049	902	912
Reeseville	175	248	288
Theresa	1166	1108	1322
State Patrol	392	527	545
Waupun		22	15
Watertown		24	8
TOTAL:	12218	13311	14082

Communications Division-

Calls by Reporting District

Fire Calls

DEPARTMENT	2002	2003	2004
ALLENTON	5	4	5
ASHIPPUN	33	61	51
BEAVER DAM	63	88	79
BROWNSVILLE	24	29	28
BURNETT	18	27	26
CLYMAN	22	23	21
COLUMBUS	12	26	17
FOX LAKE	32	26	22
HARTFORD	5	17	11
HORICON	36	36	36
HUSTISFORD	19	29	24
IRON RIDGE	25	33	29
JUNEAU	48	45	42
KEKOSKEE	21	12	15
KNOWLES	10	6	11
LEBANON	29	45	36
LOMIRA	31	54	39
LOWELL	5	3	3
MAYVILLE	28	31	33
NEOSHO	15	11	18
RANDOLPH	34	36	27
REESEVILLE	11	26	17
THERESA	21	36	29
WATERLOO	12	16	11
WATERTOWN	25	40	16
WAUPUN	14	24	13
WOODLAND	18	31	26
TOTALS:	616	815	685

Communications Division-

Calls by Reporting District

EMS/FRU Calls

DEPARTMENT	2002	2003	2004
ALLENTON EMS	7	5	5
ASHIPPUN FRU	92	53	85
BEAVER DAM EMS	212	246	301
BROOKS EMS	32	30	54
BROWNSVILLE FRU	55	60	75
BURNETT FRU	20	23	18
CAMPBELLSPORT FRU		12	2
CLYMAN FRU	31	30	44
COLUMBUS EMS	38	35	37
FOND DU LAC EMS	8	30	80
FOX LAKE EMS	117	143	144
HARTFORD EMS	115	141	238
HORICON EMS	380	400	389
HUSTISFORD FRU	73	85	79
IRON RIDGE FRU	60	73	78
JUNEAU EMS	309	348	343
KEKOSKEE FRU	47	46	33
LEBANON EMS	108	114	201
LOMIRA FRU	99	126	98
LOWELL FRU	19	20	22
MAYVILLE EMS	344	456	511
NEOSHO FRU	28	51	61
OCONOMOWOC EMS	45	32	77
RANDOLPH EMS	132	153	172
REESEVILLE FRU	25	76	32
STONE BANK EMS		2	18
THERESA EMS	131	177	162
WATERLOO EMS		29	18
WATERTOWN EMS	71	59	64
TOTAL:	2598	3055	3441

Warrants

Year	Warrants Entered	Warrants Cancelled
2001	1,116	1,203
2002	1,221	1,139
2003	1,766	1,466
2004	1,649	1,631

Criminal Investigation Division

The Criminal Investigation Division consists of one Lieutenant and 7 Detectives. Each member of the division is a trained professional that is dedicated to solving crimes and serving the residents of Dodge County.

There are many specialties within the Criminal Investigation Division. Some of which include death investigations, Internet crimes, property crimes, drug enforcement, crimes against the elderly, crimes involving children and white collar crime.

Detectives receive specialized training to assist in their investigations. One Detective's primary responsibility is investigating offenses which occur within the four State of Wisconsin prisons which are in Dodge County.

In 2004 the Criminal Investigation Division investigated over 450 cases.

Trends seen in 2004.

- Marked increase in computer based crime.
- Marked increase in identity thefts.
- Marked increase in Internet based crime.

The Criminal Investigation Division consists of:

- Lieutenant Trace Frost
- Detective Gerald Beier
- Detective Robert Neuman
- Detective Mark Murphy
- Detective Jo Anne Swyers
- Detective James Engels
- Detective Vickie Brugger
- Detective Brian Drumm

Criminal Investigation Division- 5 Year Crime Trend

	2000	2001	2002	2003	2004
TOTAL: Violent Crimes	26	24	21	23	24
Murder	1	1	0	0	0
Forcible Rape	4	2	2	5	7
Robbery	0	0	0	3	2
Aggravated Assault	21	21	19	15	15
TOTAL: Property Crimes	270	313	348	287	302
Burglary	62	122	86	108	111
Theft	190	169	231	158	169
Auto Theft	18	19	25	20	21
Arson	0	3	6	1	1

Criminal Investigation Division- Clearance Rates

Type of Crime	Number	Solved	%
Murder	0	N/A	N/A
Forcible Rape	7	6	85.7
Robbery	2	1	50
Aggravated Assault	15	15	100
78.5% Clearance			
Burglary	111	24	21.62
Theft	169	32	18.93
Auto Theft	21	14	66.66
Arson	1	0	0
26.8% Clearance			

Criminal Investigation Division- Drug Unit Activity

Investigations	109
Criminal Charges	171
Vehicles Seized	5
Monies Seized	\$54,096
Houses Seized	1

Dodge County Sheriff's Department- 2004 Website

Crime Tips	32
Traffic Concerns	7
Surveys	6
Warrant Tips	58
Total Tips/Contacts	103
Total Website Visits	96,000

Court Security

COURT SECURITY ACTIVITY – 2004

The Dodge County Justice Facility continues to enjoy the reputation of a state of the art facility. Several municipal and county agencies toured the Justice Facility in 2004. These agencies took back ideas and examples of court security equipment and procedures. Another focal point for them was the holding cells adjacent to the courtrooms as well as video arraignments and other technologies found in our courtrooms. These requested tours are a testament to the vision of those Special Jail Building Committee members and the County Board who provided Dodge County with a facility that the county can be proud of and one that sets an example for others to follow.

There was a significant increase in 2004 for special requests for security in the courtrooms. One of the normal duties of the court security officer rover is to be present in the courtroom for proceedings that are of a sensitive nature or that have the potential of being emotionally charged. Even with the attention given to these proceedings, the increase mentioned above is attributed to an increase in number and type of these proceedings. Examples of the proceedings responsible for the increases are temporary restraining order hearings, juvenile hearings, and plea and sentencing hearings.

Court Security

DODGE COUNTY SHERIFF'S DEPARTMENT COURT SECURITY – 2004 MISSION STATEMENT

- In response to Chapter 59.27 (3) of the Wisconsin statutes and Chapter 70.38 of the Wisconsin State Supreme Court Rules, the Sheriff of Dodge County and the Presiding Judge, has established a level of court security in the Dodge County Justice Facility. The Dodge County Sheriff and the Presiding Judge wish to address the potential dangers to the safety of County and State employees who work in the Dodge County Justice Facility as well as that of the public who conduct business in the facility.

- Court security in the Justice Facility is designed to increase building security in a fiscally responsible manner. The manner of security is also designed to avoid unreasonable inconvenience to both staff and the public. Court security will provide a deterrent to acts of violence in the facility by maintaining a presence of security in the facility and by attempting to keep dangerous weapons and other unauthorized items out of the facility. A secondary mission of the court security staff includes providing information, direction, and other customer service needs to the public.

- **Part-time court security staff:**
 - Dave Beal
 - Fred Berger
 - Larry Huettl
 - Adam Kreitzman
 - Gerry Wolfgram

Court Security- Statistics

- The information provided below contains statistical data from 2004 and compares it to several previous years. This is provided so that you may have an opportunity to view any trends as they relate to court security matters in the Dodge County Justice Facility.

Arrests	2001	2002	2003	2004
From Disturbances	2	0	0	1
Miscellaneous	0	1	1	3
Warrants	2	26	36	37
TOTAL:	4	27	37	41

Court Security- Statistics (Continued)

Disturbances	2001	2002	2003	2004
Clerk of Courts	1	0	0	2
Courtrooms	3	6	0	2
Family Court	2	1	0	1
Other Areas	4	2	2	5
TOTAL:	10	9	2	10

Court Security- Statistics (Continued)

Miscellaneous	2001	2002	2003	2004
Paper Service	1	1	3	2
Subjects Taken Into Custody	5	18	25	21
Special Requests For Security	4	8	6	50
Contraband Confiscated	1	0	0	0
Weapons Confiscated	1	0	0	0
TOTAL	12	27	34	73

Civil Process 4 Year Trend

Civil Process	<u>2001</u>	<u>2002</u>	<u>2003</u>	<u>2004</u>
Total Papers Served	3,300	4,277	4,076	3,925
Served/Cty Agencies	76	66	61	74
Prison Papers Served	168	193	170	73
Mileage/ Prison Service		3,740	6,010	2,890
Revenue	\$107,506	\$123,266	\$146,210	\$152,220
Sheriff Sales	<u>2001</u>	<u>2002</u>	<u>2003</u>	<u>2004</u>
Total Sales	44	83	75	160
Total Dollar Amount	\$3,633,437	\$7,971,228	\$6,868,780	\$11,283,597

Civil Process

Writs of Execution	<u>2000</u>	<u>2001</u>	<u>2002</u>	<u>2003</u>	<u>2004</u>
Executions Handled	6	5	8	20	16
Executions Unsatisfied	6	5	1	3	2
Arrangements Made	12	10	9	17	14
Seized Vehicles	1	1	3	9	0
Seized Mobile Homes	1	2	3	4	2
Seized Boat-Motor Trailer-Snowmobile	0	1	3	7	3
Out of County	0	0	0	0	0
Number Pending	0	0	0	0	0

Civil Process (Continued)

WRITS OF ASSISTANCE	<u>2000</u>	<u>2001</u>	<u>2002</u>	<u>2003</u>	<u>2004</u>
Writs Handled	9	15	8	6	19
Returned Atty's Request	3	4	1	2	2
Seized Boat-Motor-Trailer	0	4	3	0	0
Seized Vehicles	0	0	0	1	0
Seized Business Equipment	0	0	2	2	75
Residence	5	10	0	0	16
Mobile Home	1	1	1	1	0
Not Found	0	0	1	0	0
WRITS OF RESTITUTION					
Writs Handled	12	67	95	112	115
Evictions	40	67	95	112	115

Civil Process (Continued)

WRITS OF REPLEVIN	2000	2001	2002	2003	2004
Writs Handled	30	32	65	70	63
Returned per Atty	4	1	0	17	5
Seized Personal Property					
Autos-Semis-Boats	22	30	65	40	40
Mobile Homes- Motor Homes	0	0	3	3	3
Motorcycles and Shop Tools	0	1	2	8	5
Farm Machinery	0	0	40	20	10
Cattle	0	0	127	19	28
Not Found	4	6	5	0	0
WRITS OF CAPIAS					
Writs Handled	0	0	0	0	0

Sheriff Transport Division

	<u>2001</u>	<u>2002</u>	<u>2003</u>	<u>2004</u>
Total Transports	908	1028	1017	917
Warrant Pickups	249	268	313	268
Juvenile Pickups	112	150	146	63
Juvenile Transport/ Hours	303	343	364	144
Juvenile Transport/ Miles	10,825	12,311	12,945	5,554
Total Hours	2,761	2,772	2,809	2,379
Total Miles	99,681	104,770	107,398	90,580