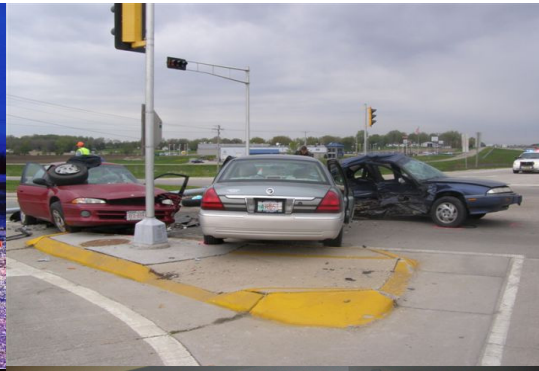


Dodge County Sheriff's Department 2009 Annual Report

We appreciate our VOLUNTEERS



To the Dodge County Board of Supervisors:

I am pleased to submit my 2009 annual report for the Dodge County Sheriff's Department. This year's report is dedicated to the "volunteer". We are blessed with well over 150 volunteers who are critical to our daily operations. Our largest group consists of those who provide a variety of services to our inmate population. From religious services and language education to alcohol and parental counseling, these volunteers provide thousands of dollars of value added hours to the Dodge County Detention Facility.

Around six years ago I approached what used to be the Dodge County Emergency Radio Team (DCERT). This professional group of volunteers consisted of HAM radio operators and would be available during natural disasters and aid with communications. I have asked them to "re-invent" themselves and transform to a Dodge County Dodge County Emergency Response Team and be available to assist law enforcement with a host of requirements, specifically traffic incident management. These dedicated volunteers responded and spent endless personal funds to purchase equipment, lights, and radios to allow them to safely work side-by-side with law enforcement. We could not do what we do without DCERT. Recently we began to provide equipment to DCERT to greater enhance their capabilities. Morning, noon and night, 24/7/365, DCERT responds within minutes and has provided thousands of hours of value added assistance to the Sheriff's Department.

Our newest group of volunteers is very unique and special. The Dodge County Sheriff's Department Posse was an initiative I started in spring of 2009. Starting small (approximately 20), the Posse has met and exceeded all expectations. They interact with the community, relieve sworn officers of minor tasks, and are ambassadors of the Sheriff's Department. Providing over 2,000 volunteer hours during the first six months, the Posse has attracted statewide attention. The common thread throughout this fabulous group is "giving back to the community." This one-of-a-kind volunteer group will continue to expand as we identify more duties that can be completed by our volunteers.

Your Sheriff's Department is a tremendously productive and professional agency. With employees as the backbone, we have experienced another very good year. The following pages will allow each division manager to highlight their annual report. As each year comes to a close, we have in motion our goals for the next. We do not rest as the citizens of Dodge County deserve active, effective, and efficient law enforcement services. We continue to be a cost effective county department, providing a budget surplus again in 2009, the sixth year out of the past seven.

I appreciate your support and counsel and look forward to working with you in 2010.

Sincerely,

A handwritten signature in black ink, appearing to read "Todd M. Nehls". The signature is fluid and cursive, with a long horizontal stroke at the end.

Todd M. Nehls  
Sheriff

# Dodge County Law Enforcement Explorer Post #9903



## PROGRAM DESCRIPTION

The Dodge County Law Enforcement Explorer Post was organized and formed in February, 2008. The Explorer Post is a cooperative effort by the law enforcement agencies of Dodge County to reach out to the youth of the area and teach them about law enforcement. The Explorer Post's goal is to teach the youth ages 14-20 the basic skills, tactics and knowledge that it takes to be a law enforcement officer. We also teach them what it means to be a law enforcement officer and give them insight into a possible career choice. They are taught leadership skills, teamwork and responsibility. The Explorer Post participates in community events, fundraisers and they accompany officers on ride alongs. The Explorer Post is run by 4 advisors who are law enforcement officers.



## ADVISORS

Top Left: Deputy Dale J. Schmidt  
Lead Advisor  
Dodge County Sheriff's Department

Top Right: Sgt. Craig Freitag  
Assistant Lead Advisor  
Randolph Police Department

Bottom Left: Deputy Joseph Nicholas  
Dodge County Sheriff's Department

Bottom Right: Officer Officer Bill Pansier  
Town of Emmet/Lebanon Police

## ADVISOR HOURS

The sheriff's department employees who assist with the Explorer Post are compensated for meetings they attend and events which they supervise the Explorers throughout the county. Other time is compensated at the discretion of the sheriff's department administrative staff. There are many hours that are donated by the advisors and assisting officers. Below is a list of 2009 hours by advisors.

Deputy Dale Schmidt – 208 hours  
Officer Bill Pansier – 29 hours

Sgt. Craig Freitag – 75.5 hours  
Deputy Joseph Nicholas – 106 hours

## EXPLORER GROUP PHOTO



### **Back Row (Left to Right):**

Trevor Barrett, Nathan Derge, Joel Trepczyk, Trevor Bethke, Kyle Ninmann, Deputy Dale Schmidt

### **Front Row (Left to Right):**

Officer Jonathon Krentz, Deputy Joseph Nicholas, Chapmin Hendricks, Brandon Kulibert, Dustin Waas, Nathan Hoepfner, Sgt Craig Freitag

### **Not Pictured:**

Kayla Damrow, Sharon Bauch, David Nummerdor, Zach Fritsche, Craig Wolc, Christopher Gurecki, Grant Demaa

## EXPLORER EVENTS

This year the Explorer Post was once again active in the community. They worked at the Dodge County Fair patrolling the parking lot to assist motorists and pedestrians. They also worked with law enforcement by calling a deputy when they observed fights, disturbances and other violations of the law. The post also worked at the Rock N River Jam parking cars as well as at the Waupun Truck N Show providing gate security. Our large fundraiser this year was working at EAA Airventure in Oshkosh. They parked cars all 7 days of the event and raised close to \$2000. They also competed in two different competitions in 2009 including one in Green Bay and one in Muskego. They received three awards at those two events competing against other Law Enforcement Explorer Posts from throughout the state.

## EXPLORER OF THE YEAR

This year the Explorer of the Year award was given to Explorer Captain Trevor Bethke. Trevor has gone above and beyond to keep the Explorer meetings on task, accomplish our goals and has been an excellent role model for the other Explorers. His attendance is exemplary and he retains the information which he is taught and applies it accordingly during training, competitions and events which we participate in. Also, Trevor has recently been hired by the Winneconne Police Department as a part-time patrol officer. In speaking with his Lieutenant, Trevor being hired was strongly due to his involvement in the Explorer Post. Trevor is our first success story of one of our Explorers being hired by a law enforcement agency. Congratulations Trevor!



### **(Left to right):**

Officer Jonathon Krentz, Deputy Joseph Nicholas, Captain Trevor Bethke, Deputy Dale Schmidt, Sgt. Craig Freitag

# Dodge County Sheriff's Department

## Patrol Division

### Captain Molly Soblewski

#### 1<sup>st</sup> Shift

Lt. Trace Frost  
Sgt. Steve Allermann  
Sgt. Jim Ketchem  
Deputy Dale Kreitzman  
Deputy Greg Weihert  
Deputy Steve Moul  
Deputy Scott Ziorgen  
Deputy Kevin Harvancik  
Deputy Ted Sullivan  
Deputy Mike Morell  
Deputy Kevin Homan  
Deputy Jason Westphal

#### 2<sup>nd</sup> Shift

Lt. Doug Ninmann  
Sgt. Dennis Walston  
Sgt. Brian Loos  
Deputy Eric Krueger  
Deputy Scott Petrack  
Deputy Mike Matoushek  
Deputy John Monaghan  
Deputy Gib Fairman  
Deputy Pete Mantai  
Deputy Don Counard  
Deputy Chad Enright  
Deputy Andy Rolfs  
Deputy Michael Willmann  
Deputy Robbie Weinfurter

#### 3<sup>rd</sup> Shift

Lt. Tony Brugger  
Sgt. Dave Weninger  
Sgt. Dean Hopp  
Deputy Randy Kramer  
Deputy Andy Krumholz  
Deputy Dale Schmidt  
Deputy Ryan Schwartz  
Deputy Joe Nicholas  
Deputy Jason Boeck  
Deputy CJ Micale

## 2009 Patrol Division

The patrol division continues to foster public trust by providing a high degree of professional service to the citizens of Dodge County. The command staff oversees daily operations and provides a necessary link between the deputies and the fulfillment of directives from the sheriff and chief deputy. The patrol deputies provide initial response to all calls for service, along with self initiated assignments such as traffic enforcement, accident investigations, security checks and general assistance to those in need.

Improvements in the past year include the following:

1. **TraCS:** The largest change to the division was the implementation of the TraCS program. TraCS stands for Traffic and Criminal Software. TraCS is a software program developed in Iowa in partnership with the Federal Highway Administration which allows law enforcement officers to share information between traffic forms and electronically submit them to the department and the court system. The system improves accuracy and simplifies retrieval of data. In short, the officers no longer hand-write citations or accident reports. The reports are generated on their squad computers and wirelessly transmitted to the department for review, after which they are sent to the State for processing. Deputy Pete Mantai was instrumental in writing software to link the TraCS program to our management information system.
2. **Farm Technology Days:** This once a year statewide program was held in Dodge County at the Crave Brothers Farm July 21-23. Despite some weather problems, the event was a huge success. Part of the success was detailed planning. The committee responsible included Lt. Trace Frost from the sheriff's department. Trace did an excellent job coordinating security on the grounds as well as assisting with traffic and parking concerns.
3. **Rec Patrol:** The recreation patrol purchased two snowmobiles and a second bicycle. The snowmobiles were purchased through a DNR reimbursement program. Our department pays the initial cost and then each year for 5 years we are reimbursed 20% of the initial cost. (A photograph of the new sleds is attached.)
4. **Car lift:** The sheriff's department has several officers trained as vehicle inspectors: Deputy Roy Jaster, Deputy Scott Petrack, Deputy Gib Fairman and Deputy Ryan Schwartz. These officers conduct salvage vehicle inspections. To assist with that project, the sheriff's department worked in cooperation with the highway department to have a car lift installed at the main building in Juneau. Annual revenue from this program has increased from \$22,500 in 2008 to \$25,992 in 2009.
5. **Portable scales:** In an effort to provide a wide range of services, the patrol division sends deputies through MCSAP (motor carrier safety assistance program) training. This allows them to conduct inspection and enforcement activities related to intrastate and interstate commercial vehicles and drivers. In April, 2009 the Department of Transportation made available portable scales for use on these vehicles. The sheriff's department was selected to receive 10 portable scales which are now available for use by our inspectors.

6. **Alcohol Compliance Checks:** In a coordinated effort with Explorer's Post #9903, the sheriff's department conducted compliance checks at area gas stations, liquor stores and grocery stores. This was the first year these compliance checks were initiated and were conducted in an effort to eliminate the sale of alcohol to underage persons. Costs for the program were provided through a CARD (comprehensive alcohol reduction) grant. Deputy Dale Schmidt supervised the project. Detailed statistics are available, but, in short, the compliance rate rose from 63% to 85% over the course of the project. It is our hope that we can increase that number through public education and extra enforcement.

Please feel free to contact me if you comments or questions.

Capt. Molly Soblewski

920-386-3836

[msoblewski@co.dodge.wi.us](mailto:msoblewski@co.dodge.wi.us)

## Patrol Division 2009 Statistics

### CITATIONS

	<u>2005</u>	<u>2006</u>	<u>2007</u>	<u>2008</u>	<u>2009</u>
OWI	376	336	347	296	303
Underage Drinking	188	197	213	164	190
Speeding	1853	2155	2460	4834	4432
Safety Belt	295	403	384	398	357
Fail to Obey Signal	116	118	119	117	49
OAS	223	225	271	273	254
OAR	126	110	148	229	197
Too Fast for Conditions	93	87	152	252	171

### ACCIDENTS

	<u>2005</u>	<u>2006</u>	<u>2007</u>	<u>2008</u>	<u>2009</u>
Bus	1	2	2	6	4
Deer	333	368	370	331	306
Fatal Crashes	18	15	14	16	16
Fatal	22	16	14	20	16
Farm Equipment	2	9	8	3	11
Motorcycle	19	17	23	22	14
Property Damage Only	472	388	483	410	307
Pedestrian	4	6	1	4	5
Personal Injury	289	265	255	221	196
<b>TOTAL</b>	<b>1160</b>	<b>1086</b>	<b>1170</b>	<b>1033</b>	<b>875</b>



## CRASH INVESTIGATION TEAM

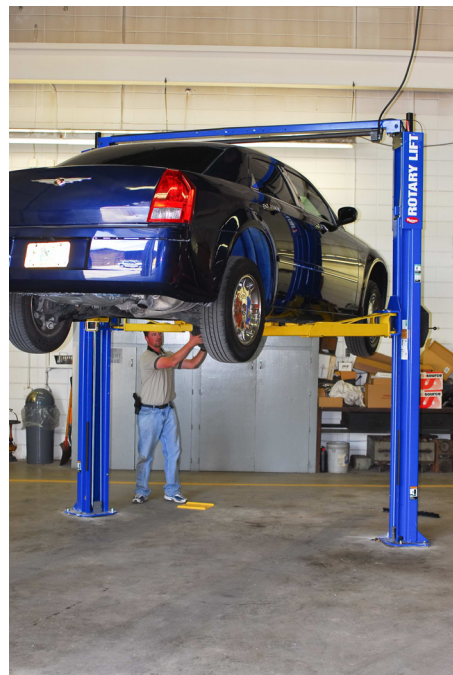
	<u>2005</u>	<u>2006</u>	<u>2007</u>	<u>2008</u>	<u>2009</u>
County Crashes	26	21	24	27	22
Hours on Scene	164	159	162	155	141
Follow up Hours	217	230	284	387	498
Assist Other	3	7	16	8	13
Other Hours	11	42	129	88	186
<b>Charges/Citations</b>					
OWI Homicide	2	4	3	1	1
Other Felony	11	4	14	11	17
Misdemeanor	0	1	3	17	13
County Ordinance	3	11	14	17	4
<b>Public Speaking</b>					
Public Education	10	13	11	8	6
Attendees	250	325	315	275	204
Hours	42	78	91	72	56

## DRE EVALUATIONS

<u># Evaluations</u>	<u>During Shift</u>	<u>Call-in</u>	<u>% Accuracy</u>
17	15	2	89%

## SALVAGE INSPECTIONS

<u>2007</u>	<u>2008</u>	<u>2009</u>
281	370	387



## BOAT PATROL

	<u>2005</u>	<u>2006</u>	<u>2007</u>	<u>2008</u>	<u>2009</u>
Hours	50	40	442	494	744
Registration Violation	1	1	9	1	37
OWI	0	1	1	2	0
Flotation Device	4	1	6	7	15
Lights	1	1	0	6	3
Other	2	0	13	23	53

Weekend = 551

Weekday = 193

## ATV PATROL

	<u>2005</u>	<u>2006</u>	<u>2007</u>	<u>2008</u>	<u>2009</u>
Hours	33	33	55	126	129
Registration Violation	1	1	5	2	19
OWI	0	2	1	1	2
Highway Operation	2	6	5	5	22
Helmet Violation	2	0	2	2	7
Other	5	3	5	5	16

Weekend = 101

Weekday = 28

## SNOWMOBILE PATROL

	<u>2005</u>	<u>2006</u>	<u>2007</u>	<u>2008</u>	<u>2009</u>
Hours	44	33	154	284	192
Registration Violation	4	1	10	8	12
OWI	0	0	3	2	1
Trespass	6	5	12	3	5
Obey Sign	10	0	1	3	5
Other	0	0	2	14	24

Weekend = 149

Weekday = 43



# Dodge County Sheriff's Department

## Court Security

In response to Chapter 59.27 (3) of the Wisconsin statutes and Chapter 70.38 of the Wisconsin State Supreme Court Rules, the Sheriff of Dodge County and the presiding judge, has established a level of court security in the Dodge County Justice Facility. The Dodge County Sheriff and the presiding judge wish to address the potential dangers to the safety of county and state employees who work in the Dodge County Justice Facility as well as that of the public who conduct business in the facility.

Court security in the justice facility is designed to increase building security in a fiscally responsible manner. The manner of security is also designed to avoid unreasonable inconvenience to both staff and the public. Court security will provide a deterrent to acts of violence in the facility by maintaining a presence of security in the facility and by attempting to keep dangerous weapons and other unauthorized items out of the facility. A secondary mission of the court security staff includes providing information, direction and other customer service needs to the public.

**Part-time court security staff in 2009:** Dave Beal, Kelly Cotter, Larry Huettl, James Perkins and Amy Yahnke.

### COURT SECURITY

	<u>2005</u>	<u>2006</u>	<u>2007</u>	<u>2008</u>	<u>2009</u>
<b>ARRESTS</b>					
Disturbances	0	0	0	2	0
Miscellaneous	2	3	0	2	4
Warrants	31	32	49	63	74
<b>TOTAL</b>	<b>33</b>	<b>35</b>	<b>49</b>	<b>67</b>	<b>78</b>
<b>DISTURBANCES</b>					
Clerk of Courts	0	1	0	0	2
Courtrooms	1	5	11	10	6
Family Court	1	4	0	0	0
Other areas	1	2	3	5	8
<b>TOTAL</b>	<b>3</b>	<b>12</b>	<b>14</b>	<b>15</b>	<b>16</b>
<b>MISCELLANEOUS</b>					
Paper Service	1	2	1	11	15
Subjects/Custody	28	35	45	63	91
Special Requests	40	64	139	179	263
Contraband	2	1	1	0	0
Weapons	0	0	0	2	1
<b>TOTAL</b>	<b>71</b>	<b>102</b>	<b>186</b>	<b>255</b>	<b>370</b>

## COURT SECURITY ACTIVITY

Other agencies continue to contact the sheriff's department regarding our policies and procedures as they relate to security matters at the justice facility. These continued requests to us for information are an indication that Dodge County continues to be the example on how to design, implement and maintain a safe environment for those who access and work in the courthouse setting.

Court Security officers screened 52,236 visitors who entered the justice facility in 2009.

There continues to be a dramatic increase for special requests for security in the courtrooms. One of the normal duties of the court security officer rover is to be present in the courtroom for proceedings that are of a sensitive nature or that have the potential of being emotionally charged. Examples of the proceedings responsible for the increases are temporary restraining order hearings, juvenile hearings and plea and sentencing hearings.

## COURT SECURITY VISITORS

<b>Year</b>	<b>Jan</b>	<b>Feb</b>	<b>March</b>	<b>April</b>	<b>May</b>	<b>June</b>	<b>July</b>	<b>Aug</b>	<b>Sept</b>	<b>Oct</b>	<b>Nov</b>	<b>Dec</b>
<b>2007</b>	---	---	---	5153	5471	5765	5650	6525	5443	5887	4871	4369
<b>2008</b>	5362	4634	5195	5653	4970	4919	5508	5278	4948	5997	4231	4466
<b>2009</b>	4862	4999	4825	4501	3774	4176	4611	4714	4326	4350	3473	3625
<b>TOTALS:</b>						<b>2007</b>	49,134					
						<b>2008</b>	61,161					
						<b>2009</b>	52,236					

## CIVIL PROCESS

	<u>2006</u>	<u>2007</u>	<u>2008</u>	<u>2009</u>
Total Papers Served	3,770	4,023	5,574	6,175
Served for Dodge Cty. Agencies	88	357	71	79
Prison Papers Served	118	84	73	75
Revenue to Dodge Cty.	\$106,584	\$107,604	\$121,017	\$113,748
Total Charges for Dodge Cty. Papers	\$5,148.58	\$5,182.91	\$3,658.80	\$3,493.40

## SHERIFF SALES

	<u>2006</u>	<u>2007</u>	<u>2008</u>	<u>2009</u>
Total Sales	155	154	201	206
Total \$ Amt	\$12,593,447	\$14,689,564	\$27,552,618	\$24,167,487

## COURT ORDERED WRITS SERVED

	<u>2005</u>	<u>2006</u>	<u>2007</u>	<u>2008</u>	<u>2009</u>
<b>Writs of Executions</b>					
Executions Handled	20	22	30	40	30
Executions Unsatisfied	3	0	0	0	0
Satisfactory Arrangements Made	12	17	10	35	20
Seized Vehicles	3	0	15	2	6
Seized Mobile Homes	1	11	1	1	2
Seized Boat/Motor/Trailer/ATV/Snowmobile	1	51	4	2	2
Out of County	0	1	0	0	0
Number Pending	0	0	0	0	0
<b>Writs of Assistance</b>					
Writs Handled	25	20	40	70	90
Returned Attorney's Request	0	3	0	5	5
Seized Boat/Motor/Trailer	0	0	0	0	0
Seized Vehicles	0	0	0	0	0
Seized Business Equipment	0	0	5	0	7
Residence	24	12	30	55	59
Mobile Homes	1	3	5	10	19
Not Found	0	2	0	0	0
<b>Writs of Restitution</b>					
Writs Handled	152	182	210	260	280
Evictions	152	182	210	260	280
<b>Writs of Replevin</b>					
Writs Handled	75	51	80	85	65
Returned Per Atty/Out of County	4	4	1	5	5
Seized Personal Property:					
Autos, Semis, Boats	60	46	60	30	10
Mobile Homes, Motorhomes	1	0	8	27	27
Motorcycles, Shop Tools	4	0	6	13	13
Farm Machinery	6	0	0	5	10
Cattle	0	0	0	0	0
Not found	0	1	5	0	0
<b>Writs of Capias</b>					
Writs Handled	0	0	0	0	0

## The Posse

2009 saw the creation of the Dodge County Sheriff's Department Volunteer Posse. After selection of the 22 founding members, initial training was completed in June. Training included vehicle operations, radio communications, safety, mail drop, radar trailer operations, traffic surveys and radar surveys. Over the course of the next seven months, the Posse logged over 2000 hours of volunteer work. Some of the assignments included squad car shuttle, crossing guard assistance, help at the Dodge County Fair and Farm Technology Days, setting up the radar trailer, assist with traffic control, scanning, sorting inmate mail, vacation house checks and delivering law enforcement paperwork to area police departments.

Quarterly meetings have been established which include a review of assignments as well as on-going training. The Posse members recently received training at Dodgeland School to assist with supervision during lunch and recess.

The Posse has established a recruitment/membership committee. This committee is responsible for reviewing all applications, selecting new members and providing training to the entire group. New applications are accepted throughout the year but additions to the group are determined by the recruitment committee.

The group established the command structure listed below:

Coordinator:	Diana Trapp
Vice Coordinator:	Jim Firehammer
Secretary:	Rhonda Klemme
Training:	John Wallace
Recruits:	Joel Vessey

Additional information, as well as an application, can be found on the sheriff's department website at [www.dodgecountysheriff.com](http://www.dodgecountysheriff.com).



## Posse Work Hour Report June – December, 2009

	Office Projects	Special Assignments	Patrol	Maintenance/ Errands
June	7.75	91.00	148.75	36.75
July	33.5	112.75	203.75	54.75
August	43.75	82.50	136.25	45.50
September	33.00	37.50	194.50	43.50
October	33.25	120.50	136.25	28.50
November	47.75	39.00	109.75	27.50
December	40.25	36.75	137.00	20.75
<b>TOTAL</b>	<b>239.25</b>	<b>520.00</b>	<b>1066.25</b>	<b>257.25</b>

**OFFICE PROJECTS:** Scanning, reports, mail

**SPECIAL ASSIGNMENTS:** Fingerprints, crossing guard, training, Farm Tech, parades, blood drive, H1N1 clinic, community programs

**PATROL:** PD mail, house checks, radar, Huber checks, traffic control

**MAINTENANCE/ERRANDS:** Squad shuttle



**POSSE MEMBERS (Left to Right)**

Lisa Narr, Sharon Chmielewski, Rhonda Klemme, Jane Mulligan, CJ Breselow, Bob Embertson, Lois Tiedt, Jeff Giese, Ed Bruesch, Joel Vessey, John Wallace, Warren Jackson, Gordon Schwartz, Dennis Noncek, Tom Fellenz, Jim Firehammer, Don Hillard, George Birkel)

**NOT IN PICTURE:** Dick Trapp, Diana Trapp



## **Criminal Investigation Division Drug Task Force Evidence Unit**

**Lt. Jo Anne Swyers - Supervisor**

### **GENERAL INVESTIGATIONS**

**Det. Vickie Brugger  
Det. Kevin Day  
Det. Brian Drumm  
Det. Robert Neuman  
Det. Michael Reissmann  
Det. Daniel Stiemsma**

### **DRUG TASK FORCE**

**Det. Brian Prieve  
Deputy Chad Haase  
Deputy Jeff Meyer**

2009 brought changes to the Criminal Investigative Division. Det. Jim Rohr retired to become the Chief of Police for Fox Lake. Kevin Day was promoted from the drug unit to general assignment detective. Deputy Chad Haase was reassigned from patrol to the drug unit replacing Day.

The Criminal Investigative Division conducted 526 investigations in 2009. Ninety-three of these investigations involved crimes against children. There were 101 prison investigations, 43 burglary investigations, 6 cases involving crimes against the elderly, 10 fire investigations and 14 death investigations. The CID unit has a 94% Violent Crime Clearance rate and 24% Property Crime Clearance rate for 2009. These clearance rates rank well within the state of Wisconsin.

State and local news headlines reflected several major investigations in 2009 -

- The “Baby Theresa” infant death investigation - Open
- Numerous arson investigations – solved w/convictions.
- Area roofer’s fraud of many Dodge County citizens - convicted
- Bombing incidents by Beaver Dam area men - convicted
- Reinvestigating unsolved “cold case” homicides

The Drug Task Force continues to be strong and proactive as the 11 local law enforcement agency members continue in their commitment to combating drugs in Dodge County. The Drug Task Force made 143 arrests, including asset forfeiture seizures in excess of \$447,000. Dodge County is experiencing the resurgence of heroin and heroin related overdoses and deaths, as are other jurisdictions throughout Wisconsin. The Drug Unit has been successful meeting its goal of targeting higher level drug dealers and will continue these efforts.

The Criminal Investigative Division will continue to monitor emerging threats to the citizens of Dodge County in order to be prepared and proactive in the prevention of, response to and investigation of criminal activity.

### **5 YEAR CRIME TOTAL**

	<u>2003</u>	<u>2004</u>	<u>2005</u>	<u>2006</u>	<u>2007</u>	<u>2008</u>	<u>2009</u>
<b>Violent Crimes Total</b>	23	24	21	37	36	43	33
<b>Murder</b>	0	0	0	1	1	1	0
<b>Forcible Rape</b>	5	7	3	7	4	2	5
<b>Robbery</b>	3	2	0	6	0	1	0
<b>Aggravated Assault</b>	15	15	18	23	31	39	28
<b>Property Crimes Total</b>	287	302	237	288	269	266	242
<b>Burglary</b>	108	111	75	117	73	81	73
<b>Theft</b>	158	169	140	154	177	160	152
<b>Motor Vehicle Theft</b>	20	21	21	15	16	22	12
<b>Arson</b>	1	1	1	2	3	3	5

## CLEARANCE RATES 2007

<u>Type of Crime</u>	<u>Number</u>	<u>Solved</u>	<u>Percentage</u>	
Murder	1	1	100	
Forcible Rape	4	4	100	94% Violent
Robbery	0	0	N/A	Crime Clearance
Aggravated Assault	31	29	96	
Total Violent Crimes	36	34		
Burglary	73	27	37	
Theft	177	38	21	26% Property
Motor Vehicle Theft	16	4	25	Crime Clearance
Arson	3	2	67	
Total Property Crimes	269	71		

## CLEARANCE RATES 2008

<u>Type of Crime</u>	<u>Number</u>	<u>Solved</u>	<u>Percentage</u>	
Forcible Rape	1	1	100%	93% Violent
Robbery	2	1	50%	Crime Clearance
Aggravated Assault	39	37	95%	
Total Violent Crimes	43	40		
Burglary	81	13	16%	22% Property
Theft	160	29	19%	Crime Clearance
MV Theft	22	13	59%	
Arson	3	3	100%	
Total Property Crimes	266	58		

## CLEARANCE RATES 2009

<u>Type of Crime</u>	<u>Number</u>	<u>Solved</u>	<u>Percentage</u>	
Murder	0	0	N/A	94% Violent
Forcible Rape	5	5	100%	Crime Clearance
Robbery	0	0	N/A	
Aggravated Assault	28	26	93%	
Total Violent Crimes	33	31		
Burglary	73	19	26%	24% Property
Theft	152	30	20%	Crime Clearance
MV Theft	12	3	25%	
Arson	5	4	80%	
Total Property Crimes	242	56		

# DODGE COUNTY EMERGENCY RESPONSE TEAM

[www.dcert.org](http://www.dcert.org)

## 2009 ANNUAL REPORT

The Dodge County Emergency Response Team is pleased to present our annual report for 2009. The past year again saw a jump in the number of events and incidents worked, along with a significant increase in the number of hours worked. New members have been added to the team to support the increased level of service being provided. DCERT provided support to several high profile events including Farm Technology Days (305 hours worked) and the Columbus chemical fire (104 hours worked) in 2009.

### THE NUMBERS

	<u>2009</u>	<u>2008</u>	<u>2007</u>	<u>2006</u>	<u>2005</u>
Total incidents and events responded to:	85	67	52	40	37
Scheduled events:	45	32	27	29	21
Law enforcement callouts/assists:	40	35	25	11	16
Total volunteer hours worked:	1692	888	471	433	611
Members:	29	20	20	20	21

### OFFICERS 2010

President Carl Guse	920-210-4455	Vice President Devin Sellnow	920-904-2337
Secretary Lee Ann Heiden	920-344-7281	Treasurer Brian Krotzman	920-219-9014

A Memorandum of Understanding has been signed between DCERT and the Dodge County Sheriff's Department to establish a Traffic Incident Management (TIM) response protocol. A TIM response truck has been acquired and is being outfitted. This program is designed to increase the safety of responders and victims at highway incidents and the efficient flow of traffic.

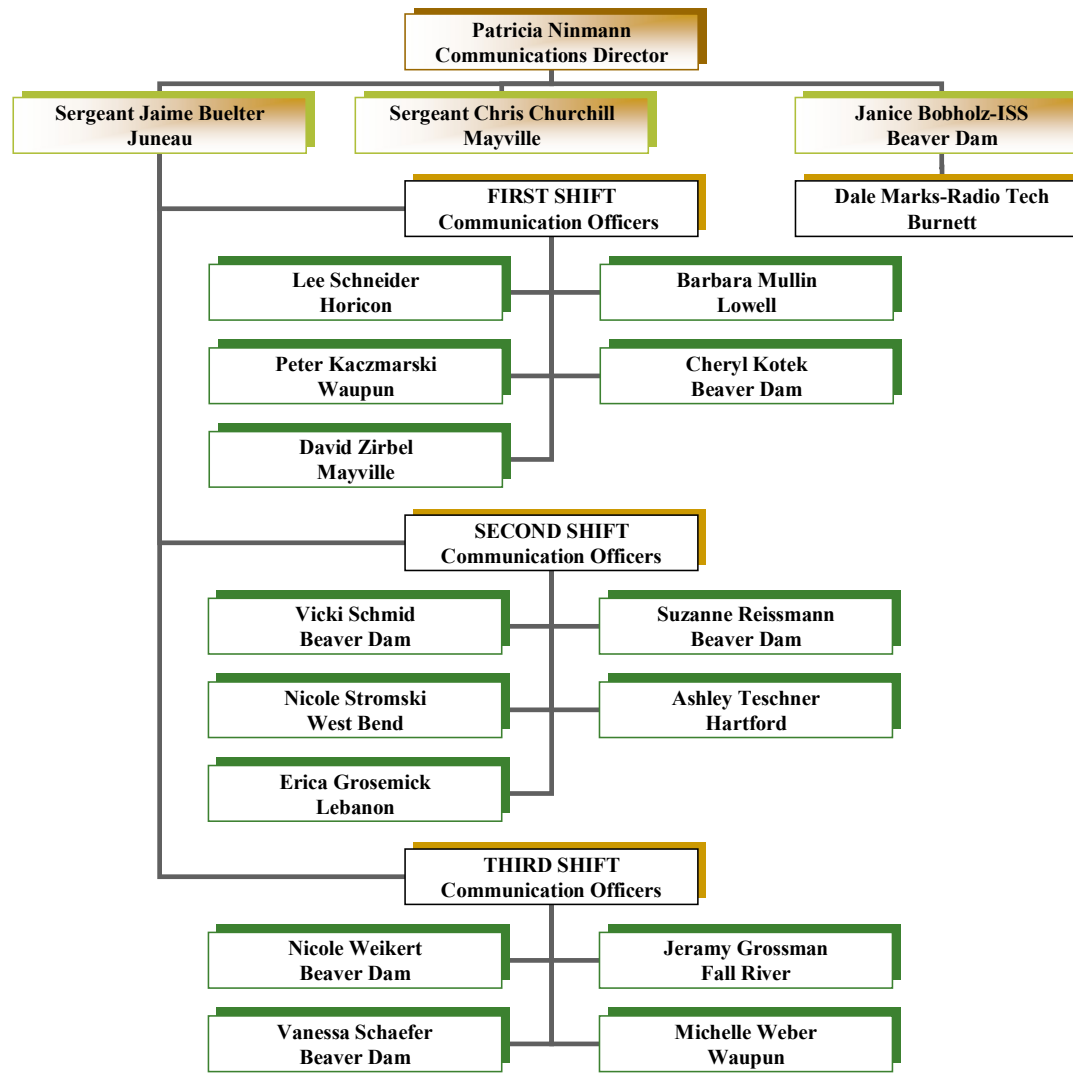
We are grateful for the monetary and equipment donations received from the Dodge County Sheriff's Department, Horicon Police Department, Juneau Police Department, Iron Ridge Fire Department, Mayville Audubon Days, YMCA, Kenwood, the Wisconsin Department of Corrections and Farm Technology Days. The donations received have allowed team members to be equipped with safety, warning and communications equipment.

Respectfully submitted,  
Carl Guse, President



Truck donated to DCERT for Traffic Incident Management.

# Dodge County Sheriff's Department 911 Communications Center



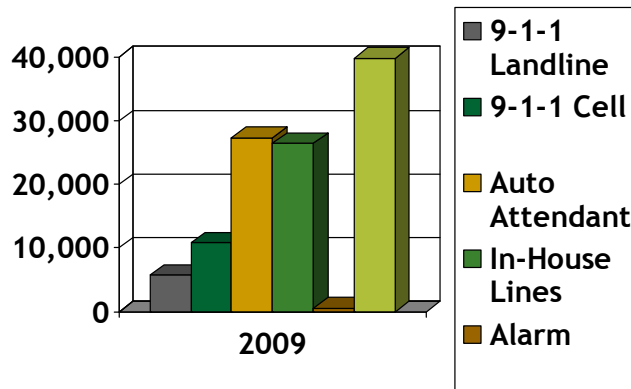
## CALLS FOR SERVICE - 2009

Dodge County	40,438
Police Departments	51,567
Fire Departments	1,021
EMS/Fire Responder Units	<u>7,551</u>
<b>TOTAL</b>	<b>100,577</b>

---

### 2009 Incoming Phone Calls

■ **TOTAL: 110,768**



9-1-1 Landline	5,730
9-1-1 Cell	10,840
Auto Attendant	27,368
In-House Lines	26,409
Alarm	578
PD/TDD	39,843

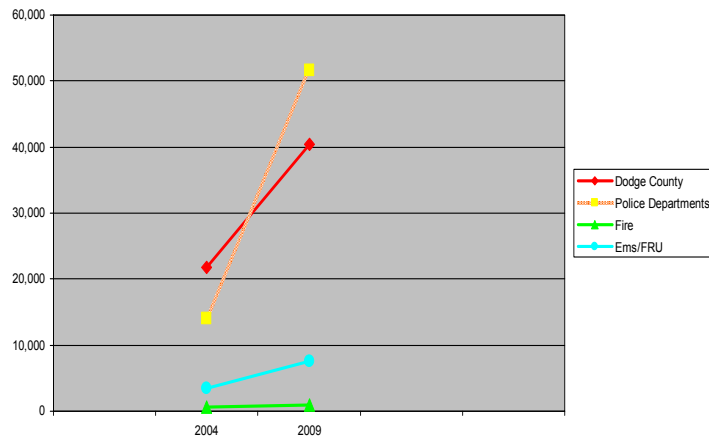
---

## 5 YEAR COMPARABLE

	<u>2004</u>	<u>2009</u>
Sheriff's Department	21,859	40,438
Police Departments	14,082	51,567
Fire Departments	685	1,021
EMS/Fire Responder Units	3,441	7,551
<b>TOTAL</b>	<b>40,067</b>	<b>100,577</b>

**150% increase in activity from 2004**

### 5 Year Comparable Chart (2004 and 2009)





**CALLS BY REPORTING DISTRICT**  
**Law Enforcement**

<b><u>DEPARTMENT</u></b>	<b><u>2004</u></b>	<b><u>2009</u></b>
Town of Beaver Dam	443	579
Beaver Dam	217	25,869
Brownsville	413	217
Clyman	103	137
Dodge County	21,859	40,438
Emmet/Lebanon	329	348
Town of Fox Lake	293	231
Fox Lake	1,094	2,271
Horicon	1,713	4,927
Town of Hustisford	12	0
Hustisford	214	754
Iron Ridge	251	334
Juneau	1,250	2,940
Lomira	1,911	2,205
Lowell	113	81
Mayville	1,800	2,748
Neosho/Rubicon/Ashippun	621	902
Other	202	2,600
Randolph	912	1,105
Reeseville	288	246
Theresa	1,322	2,209
State Patarol	545	864
<b>TOTAL</b>	<b>35,905</b>	<b>92,005</b>

**CALLS BY REPORTING DISTRICT**  
**EMS/First Responder Units**

<b><u>DEPARTMENT</u></b>	<b><u>2004</u></b>	<b><u>2009</u></b>
Allenton EMS	5	6
Ashippun FRU	85	106
Beaver Dam EMS	301	3,234
Brooks EMS	54	235
Brownsville FRU	75	91
Burnett FRU	18	42
Campbellsport FRU	2	1
Clyman FRU	44	56
Columbus EMS	37	0
Fond du Lac EMS	80	40
Fox Lake EMS	144	175
Hartford EMS	238	125
Heartline	0	55
Horicon EMS	389	556
Hustisford FRU	79	111
Iron Ridge FRU	78	110
Juneau EMS	343	604
Kekoskee FRU	33	56
Lebanon EMS	201	166
Life Star	0	3
Lomira FRU	98	144
Lowell FRU	22	19
Mayville EMS	511	865
Neosho FRU	61	50
Oconomowoc EMS	77	36
Randolph EMS	172	202
Reeseville FRU	32	58
Stone Bank EMS	18	18
Theresa EMS	162	230
Waterloo EMS	18	29
Watertown EMS	64	128
<b>TOTAL</b>	<b>3,441</b>	<b>7,551</b>

**CALLS BY REPORTING DISTRICT**  
**Fire Units**

<b><u>DEPARTMENT</u></b>	<b><u>2004</u></b>	<b><u>2009</u></b>
Allenton	5	4
Ashippun	51	71
Beaver Dam	79	282
Brownsville	28	38
Burnett	26	19
Clyman	21	26
Columbus	17	33
Fox Lake	22	33
Hartford	11	8
Horicon	36	36
Hustisford	24	33
Iron Ridge	29	36
Juneau	42	38
Kekoskee	15	18
Knowles	11	13
Lebanon	36	26
Lomira	39	38
Lowell	3	3
Mayville	33	33
Neosho	18	18
Randolph	27	28
Reeseville	17	35
Theresa	29	39
Waterloo	11	13
Watertown	16	30
Waupun	13	37
Woodland	26	33
<b>TOTAL</b>	<b>685</b>	<b>1,021</b>

**WARRANT ACTIVITY**  
**Five Year Comparison**

<b><u>YEAR</u></b>	<b><u>WARRANTS ENTERED</u></b>	<b><u>WARRANTS CANCELLED</u></b>
2005	1,539	1,658
2006	1,383	1,475
2007	1,189	1,246
2008	1,099	1,272
2009	970	1,180

**WEBSITE ACTIVITY**

<b><u>2009</u></b>	<b><u># OF VISITS</u></b>
Crime Tips	1,964
Traffic Concerns	2,290
Surveys	1,544
Warrant Tips	1,395
Warrants	12,676
Sheriff Sales	14,595
Total Pages Visited	134,763

# Dodge County Detention Facility



Administration: Rodney Kreitzman Detention Facility Administrator, Thomas Polsin Deputy Administrator, Kevin Hill Deputy Administrator

Deputy Secretaries: Annette Duckett, Arla Folbrecht, Pamela Grosskopf

Supervisors: Mark Born, Aaron Ellis, Rick Gempeler, Jason Hundt, Chad Riter, Mark Schwartz, Dawn Smack, Scott Smith

Corporals: Arthur Elsner, Michael Harmsen, Gwyn Meyer, Brenda Pieper, Jason Polsin, Aaron Potratz, Linda Thieme

Programs Officers: Scott Buckner, Matt Marvin, Chris Myers, Jeffrey Schlegel, Jay Westhuis

First Shift Officers: Jodi Apel, Sandra Arneson, Stephanie Chavez, Donald Davidson, David Gabel, Mark Goetsch, David Gorst, Peggy Harkins, Stacy Hasenstab, Kevin Kluck, Curtis Knoll, Nicole Krentz, Donald Krueger, Robert Kucharski, Clint Leidolf, Clara Marx, Hannelore Mueller, Michele Pieper, Michele Reinwald, Carla Schultz, Karla Schultz, Kevin Schultz, Kristin Marwitz, Melissa Watkins

Second Shift Officers: Debra Anderson, Carole Baker, Dustin Beck, Paul Coopman, Laurie Covington, Denise Donegon, Michael Garbalagtys, Brian Harkins, Philip Hraban, Ryan Jackson, Mark Ketter, Bradley Knoll, Brian Koch, Samantha Laughlin, Ryan Martin, William Miller, Dale Oestreich, Duane Olbinski, Kyle Opetz, Rachel Parish, James, Rhode, Stacy Ronge, Nicole Seitz, Lana Stelter, Daniel Watkins, Michael Willmann, David Zabel, Rose Zangl

Third Shift Officers: Bryan Beaudry, Matt Bublitz, David Churchill, Jodi Coda, David Hagen, Bruce Harned, Nicholas Hraban, Marcus Kirchoff, Daniel Mullin, David Owens, Benjamin Schepp, Darrel Schlieve, Anna Schmidt, Joseph Vukovich, Jennifer Welch, Kasey Young, Lisa Zuelsdorf, Sandra Zuelsdorf

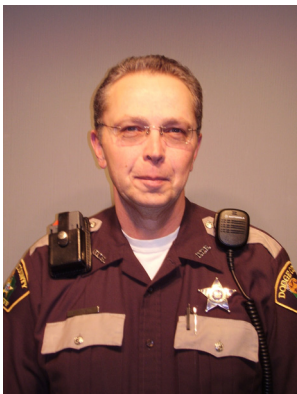
## **RODNEY KREITZMAN**

### **Detention Facility Administrator**

A number of significant personnel events took place in 2009. A fifth Programs Officer position was added to our Programs staff. This position was added in late 2009 to assist with the workload of our current staff and more specifically to be responsible for our new community work programs.

Officer Clara Marx was nominated for and received the 2009 Corrections Officer of the Year Award, due to her work with counseling inmates. Officer Marx was chosen not only from the staff at the detention facility but also from all the state institutions located in the county.

Three new Corrections Officers were hired to fill existing vacancies in 2009.



Philip Hraban



Ryan Jackson



David Zabel

There were a number of upgrades in the detention facility in 2009. A wiring project was completed in the facility. New electrical conduit was added in the ceilings throughout several areas of the facility. This project was necessary because existing conduit was full and there was a need for additional computer/phone outlets in several areas.

A twenty-four hour digital video recording system was installed for the entire facility. This system provides continuous digital recording from all cameras in the facility. This will provide us with historical data that can be used in several ways. The following situations are just a couple of ways that video can be used. Video can be used to refute a claim filed against the county by an inmate. It may be used as a source of evidence for any significant incident in the facility. The video can also be used as a training tool at in-service training.

Early in 2009, a rubberized floor was put down in one of the recreation rooms to replace the worn original carpet. This type of flooring is better suited for the activities that take place in the recreation room. We have also realized a side benefit of this type of floor as it has extended the life of shoes worn by the inmates.

Carpeting was also replaced in the intake area of the facility. The same type of carpeting was used because it has proved to be a very durable and easily maintained carpet.

## **CORRECTIONAL OFFICER OF THE YEAR**



Officer Clara Marx was named the 2009 Corrections Officer of the Year by the Dodge County Law Enforcement Executive Association. Officer Marx was chosen from the employees at all the correctional institutions located in Dodge County. Officer Marx began her employment with the detention facility in February, 2001 and has a degree in AODA counseling. Shortly after she began her employment, Officer Marx developed a form of an anger management and AODA program for inmates at the detention facility. Officer Marx did this on her own in addition to her regular duties as a corrections officer.

Each program is six weeks long and runs January through the end of September. Each program has an average enrollment of twelve inmates. An inmate receives a certificate of completion when they successfully complete a program.

In 2009 Officer Marx began teaching a class to inmates on parenting. Core topics covered in the program include how to explain to a child where they, (inmate) are and why they are there, how to fulfill the parental role while being absent, maintaining communication with the child and other parent of the child, how to establish and maintain a good relationship with the other parent for the sake of child and proper discipline for a child. Responses from inmates in this program have been very positive.

One inmate took the time to send a letter and I quote, "I just wanted to thank you for the tools you've taught me in that parenting class". "...thanks for teaching me in a few weeks more than I've learned in every course that I've ever taken." Officer Marx has not only gone above and beyond what is expected of her, but to many, has made a positive difference in their lives as illustrated by just one of her program participants.

## VOLUNTEERS

The Dodge County Detention Facility actively participates in the Sheriff's Posse Program. As part of a cost savings initiative for the county, the detention facility works with approximately 7 Posse volunteers.



Jane Mulligan assists several days a week processing inmate mail. Jane opens mail, locates the housing assignment for the inmate and writes that information on the envelope for distribution purposes. This process can take anywhere from 1 to 2 hours a day depending on the facility population and the time of the year. Once Jane has completed her tasks, the mail is forwarded to facility support staff who check the mail for contraband and/or other inappropriate or unauthorized material. Having Jane involved in this process saves approximately \$3000 per year.

In late 2009 the detention facility set in motion a process where certain Posse members will assist in transporting inmate labor crews who are involved in our community work programs. In absence of the volunteers, corrections officers would be responsible for these transports. Posse member will start this in 2010. Posse members that will be involved in these transports are Edward Bruesch, Sharon Chmielewski, Robert Embertson, Jim Firehammer, Rhonda Klemme and John Wallace.

In addition to the volunteer work done by the Sheriff's Posse, the detention facility uses other volunteers on a weekly basis. Dianne Cochrane and Arthur Risser come to the detention facility twice a week for a total of 6 hours and hold 4 classes on English as a second language. This class is designed to teach basics of the English language to inmates who speak little or no English. Approximately 9 volunteers take turns holding Alcoholics Anonymous classes once a week for 90 minutes.

A large group of volunteers work to provide bible study and Sunday night religious services for the inmate population. Non-denominational bible study is held twice a week. Catholic bible study is held once a week and female bible study is held once a week. Each bible study session lasts for about an hour. Volunteers involved in bible study are: Betsy Askren, Richard Biermann, Shirley Blecher, Hannah Boone, Joan Case, Alicia Coleman, Jose Gonzalez, Dennis and Joy Groll, Kelli Hillmann, Audrey Kennedy, Gloria Krueger, Alyssa Owens, Rebecca Owens, Leonard Payton, Michael Petrie, Randal Vossekuil, Menachem Rapoport, Carole Schulte and Kenneth Wiebelhaus.

Volunteers for the Sunday night religious services are David Aderman, Timothy Bauer, Michael Baumann, John Bonow, Dennis Bratz, William Carter, Philip Heyer, Paul Hirsch, Joshua Kesting, Kurtis Mau, Larry Mose, David Pries, Daniel Schmidt, Paul Schupmann and James Werner.



## BOOKING TRENDS

<b>TRENDS</b>	<b>2005</b>	<b>2006</b>	<b>2007</b>	<b>2008</b>	<b>2009</b>	<b>% Change</b>
Male	4,127	4,620	5,476	5,987	6,037	1%
Female	672	776	756	792	771	-3%
<b>TOTAL</b>	<b>4,799</b>	<b>5,396</b>	<b>6,232</b>	<b>6,779</b>	<b>6,808</b>	<b>0.43%</b>

<b>TYPE</b>	<b>2005</b>	<b>2006</b>	<b>2007</b>	<b>2008</b>	<b>2009</b>	<b>% Change</b>
City	41	65	69	51	45	-12%
Contract	11	595	227	59	0	NA
County	2,864	2,780	2,801	2,882	2,704	-6%
FBOP	13	10	9	11	17	55%
FED	408	328	281	409	534	31%
ICE	944	1,003	2,179	2,792	2,880	3%
Other	119	153	168	161	186	16%
PRO	391	453	489	392	428	9%
State	3	0	0	0	0	NA
Sanction	NA	0	0	10	6	-40%
Trans In	5	9	9	12	8	-33%
<b>TOTAL</b>	<b>4,799</b>	<b>5,396</b>	<b>6,232</b>	<b>6,779</b>	<b>6,808</b>	<b>0.43%</b>

The total number of bookings was up for the fourth year in a row. There was a slight increase in 2009 compared to 2008. There are no numbers for “Contract” and “State” types due to the fact that in 2009 we held no contract inmates for other counties and no state inmates.

## TRANSPORTS

	<b>TRIPS</b>	<b>MILES</b>
<b>2003</b>	1,019	215,115
<b>2004</b>	1,164	254,021
<b>2005</b>	1,345	275,187
<b>2006</b>	1,499	344,239
<b>2007</b>	1,538	377,574
<b>2008</b>	1,808	428,170
<b>2009</b>	1,864	408,090
<b>TOTAL</b>	<b>10,237</b>	<b>2,302,396</b>

	<b>2009</b>	<b>TRIPS</b>	<b>MILES</b>
USMS Milwaukee		461	57,164
USMS Madison		205	21,525
USMS Chicago		143	46,046
Immigration		1,055	283,355
<b>TOTAL</b>		<b>1,864</b>	<b>408,090</b>

## REVENUES AND EXPENSES

	<b>2005</b>	<b>2006</b>	<b>2007</b>	<b>2008</b>	<b>2009</b>
<b>Revenues</b>	\$8,187,677	\$7,956,005	\$8,848,001	\$9,016,649	\$8,408,871
<b>Expenses</b>	\$7,547,105	\$8,286,189	\$8,534,408	\$9,205,390	\$8,854,978
<b>Net Levy</b>	(\$640,572)	\$330,184	(\$313,593)	\$188,741	\$446,106

# PROGRAMS

## SEWING PROGRAM

The success of the detention facility's sewing program continues to grow. This program provides a benefit to both inmates and to Dodge County. Corrections Officer Sandra Arneson teaches inmates a variety of sewing operations. The sewing program occupies inmate's time in a positive manner by teaching them a skill and providing them with a sense of accomplishment through the work they are performing. The County realizes cost savings through repair and recycling of clothing and other items. In 2009 the detention facility realized a cost savings of \$16,942.21. Program savings since 2007 total \$37,348.49.



### 2009 Saved Items

	<b>Pants</b>	<b>Shirts</b>	<b>Blankets</b>	<b>Mattress Covers</b>	<b>Sheets</b>	<b>Towels</b>	<b>Boxers</b>
<b>Total</b>	994	452	27	366	14	8	966
<b>Unit Price</b>	\$8.82	\$6.86	\$6.25	\$6.20	\$3.10	\$1.73	\$2.67
<b>Savings</b>	\$8767.08	\$3,100.72	\$168.75	\$2269.20	\$43.40	\$13.84	\$2579.22

<b>Items</b>	<b>Pants</b>	<b>Shirts</b>	<b>Blankets</b>	<b>Mattress Covers</b>	<b>Sheets</b>	<b>Towels</b>	<b>Boxers</b>	<b>Total</b>
<b>2007</b>	\$2566.80	\$2112.16	\$705.28	\$1643.00	\$68.25	\$1.05	\$0.00	\$7096.54
<b>2008</b>	\$8451.84	\$2363.90	\$152.00	\$2331.20	\$9.75	\$1.05	\$0.00	\$13,309.74
<b>2009</b>	\$8767.08	\$3100.72	\$168.75	\$2269.20	\$43.40	\$13.84	\$2579.22	\$16942.21

## COMMUNITY WORK PROGRAM

In 2009 the detention facility began to lay the groundwork for a type of community work program. The detention facility has always provided inmate labor for such things as tornado clean-up, floods, non-profit groups and government agencies. We are now working with the Commission on Aging to provide inmate labor for lawn raking, snow shoveling and with the potential of adding lawn mowing. These services are provided to those identified by the Commission on Aging who can not afford to pay for these services or who are physically challenged to perform the tasks.



The county saves money because the inmates are working time off of their sentence by participating in these programs. The inmates give back to the community and through the work programs gain self-esteem, a sense of accomplishment and lay the foundation for positive behavioral change. In 2009, 120 Huber prisoners worked approximately 65,000 hours at 46 different jobs sites. This saved the county approximately \$89,820 in housing and other related costs by a reduction in the length of inmate sentences. Eleven of these jobs sites were specific to the Community Work Program.

The detention facility is currently working with the Dodge County judges to further expand this program with certain alternatives to incarceration.