

DODGE COUNTY TRAFFIC SAFETY COMMISSION
April 13, 2015

Members present: Joel Kiesow, Dodge County Traffic Safety Coordinator; Trace Frost, DSO; Sheriff Dale Schmidt, Ryan Mayer, Wisconsin DOT, Pete Thompson, Dodge County Highway Department, Corey Foster, WISDOT BOTS, Brandon Stommel, Beaver Dam Police Department, Dave Beal, Juneau Police Department and AJ Llanas, Wisconsin State Patrol. Also present were Matthew Christian, Beaver Dam Fire Department, Bill Nass, Tn Emmet Chairman, Dale Heeringa, Jeremy Rasch and Scott Loudon, Waupun P.D. and Eugene Goodearle.

Members absent: Del Yaroch .

- I. The meeting was called to order by Joel Kiesow at 9:30 am in Del's absence. Joel acknowledged the excellent work of Bob Sell in the coordinator's position. He also thanked Trace Frost for his work for the commission. Introductions were made.
- II The minutes from January 12, 2015 meeting were approved as presented on a motion by Beal and second by Frost.
- III. There were no fatal crashes in the first quarter of 2015.
- IV. Old Business
 - A. CTH A and CTH E. Pete updated the committee that rumble strips are bid items in the 2015 paving projects, but are not for certain yet. Advance curve warning and speed reduction plaques are going in soon. This interim step will be monitored over time
 - B. CTH B curve at CTH W. Pete stated that the curve is rated for 45 mph which is the posted speed limit. There is an advanced curve warning sign which was relocated to be compliant with standards. No other action will be taken.
- V. New Business
 - A. Parking on CTH T by The Old Rock Bar at STH 16/60. Neighbors have complained that patrons are parking along the road and on their grass due to a lack of shoulder. This does not allow two cars to pass safely. Litter and broken glass were also a concern. It was acknowledged that the bar is doing good business. Pete stated parking is allowed if not otherwise prohibited if the vehicle is out of the lane of traffic. Pete will research what is needed to prohibit parking with the corporation counsel. There are instances in the county where No Parking signs are installed. The authority for their placement will also be checked. Pete will also speak with the bar owners to best utilize off-street parking.
 - B. STH 33 and CTH P crash. Ryan spoke about the semi vs. pickup with trailer crash of March 18, 2015. The pickup stopped, then pulled out and was struck by the semi, which overturned and spilled its load. There were no fatalities. Ryan says there have been 21 crashes in 5 years. They are still occurring after overhead STOPS with beacons were installed. The crash rate is sufficient to warrant safety program money. Ryan is promoting an August application for a roundabout through 90% Federal/10% State funding. The Commission consensus was in full support of this proposal. Ryan stated he had already received a letter seeking improvements from the Town of Herman for everything but a roundabout. To date, the roundabout at CTH P and STH 60 has been well received and is working as expected.

C. Reports

- a. BOTS. Corey stated there have been 114 fatalities in 105 fatal crashes thus far statewide in 2015. This compares to 87/79 last year at this time. Not sure of the reason. He said DC Sheriff and BD PD have been awarded combined Task Force grants worth \$20,000 for Speed enforcement and \$16,000 for Seat Belt enforcement. He encouraged other agencies to speak with him about similar opportunities. He said there is training in August for Crime and Traffic data analysis in Milwaukee. The 70 mph bill for interstates has passed one house so far.
 - b. DOT—Ryan followed up on the pending change in speed limit to 65 mph on STH 26 from CTH Q to STH 16/60 interchange when construction is complete this year. He notes there are 10 at-grade intersections plus driveways in this stretch. He says there are 8 intersections on USH 151 in a similar length where the speed is 65. Bill Nass stated Tn of Emmet and Clyman are still concerned with the speed. Emmet Police ticketed 10 drivers on a Sunday morning at 75 to 84 mph. Bill offered a letter of support to keep the speed at 55. Ryan stated it was a struggle to construct a 4-lane highway and keep the speed at 55. Review and discussion will continue. AJ requested more speed limit signs in both the open section and the construction zone as an interim measure. Ryan stated there was a statewide review of cross-median crashes. There are 3 hot spots in the county along USH 151—S to Salem Rd, Oakwood to M, and STH 26 around Waupun. He will look to request cable guard installation funding for these spots.
 - c. County—Pete stated the CTH V concrete paving project is scheduled to start soon. There will be a Public Info meeting in Mayville on April 21st at 6 pm. Other paving projects do not have confirmed schedules yet.
- D. AJ announced that the county has 3 troopers now, down from 4 due to a retirement. There is another possible retirement late this year. He will monitor recruiting classes.
- E. Brandon stated the downtown Beaver Dam project has begun with just a few startup problems.
- F. Sheriff Schmidt thanked Joel for taking on the Coordinator position. He heard many good things about Joel.

Next meeting is scheduled for July 13, 2015 at 9:30 am in the Training Room of the Dodge County Sheriff's Department.

Meeting adjourned 10:30 am.
Pete Thompson,
Secretary.

School Bus

BUS 02	Bus Travelling to/from <input type="radio"/> To <input type="radio"/> From	School Name	Body Make	Seating Capacity
	School District Contracted With			

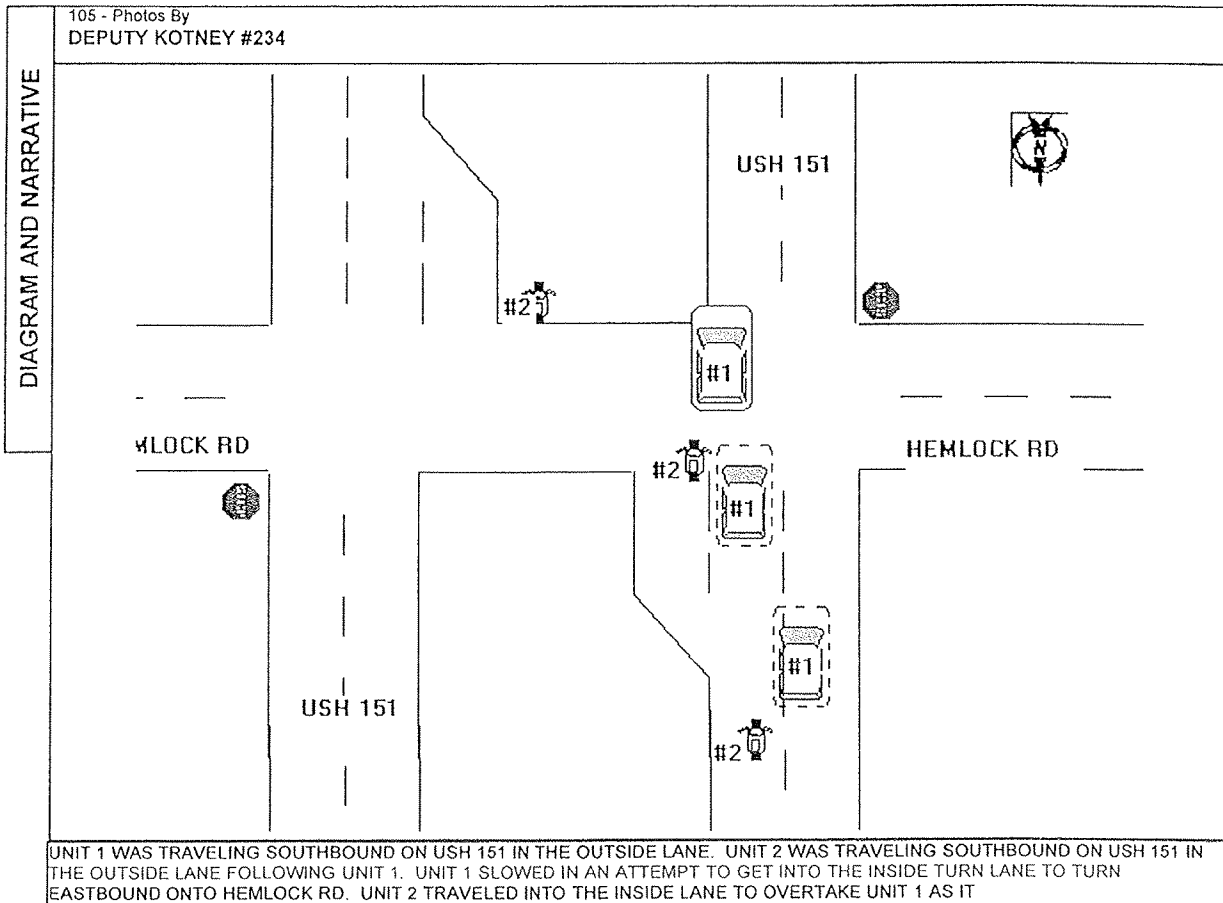
Occupant

OCCUPANT 01	<input type="checkbox"/> Address Same As Operator				
	65 - Unit No 01	66 - Occupant Last Name ██████████	66 - First Name ██████████	66 - Middle Initial L	66 - Suffix
	68 - Address Street & Number W11307 COUNTESS ROAD		68 - PO Box		
	68 - City RANGELAND		68 - State WI	68 - Zip Code 53856	
	67 - Date of Birth ██████████		69 - Sex M		
	71 - Seat Position FRONT-SEAT-RIGHT-SIDE-(TRAIN ENGINEER)			72 - Safety Equipment SHOULDER-BELT-AND-LAP-BELT-USED	
	70 - Injury Severity N - NO APPARENT INJURY		73 - Airbag NON-DEPLOYED	75 - Ejected NOT-EJECTED	77 <input type="checkbox"/> Medical Transport
	76 - Trapped/Extricated NOT-TRAPPED		78 - Agency Space		

Trailer

TRL 01	106 - Power Unit Number	License Plate Number	Plate Type	State	Expiration Year
	Trailer Make		Unit Type	Vehicle Identification Number	

Diagram and Narrative





Department of Public Safety

Office of Accident Records

118 West Capitol

Pierre, South Dakota 57501-2586 605/773-4156

FAX: 605/773-4870

In response to your request for more information on our Fatality Marker Program which employs the use of "THINK" signs, the following is provided:

The Department of Transportation installs Fatal Accident Markers, or "THINK" signs at locations where fatal accidents have occurred since January 1, 1979. The program originated as an effort to make motorists aware of how serious the drunk driver problem is and how dangerous it is to drink and drive. Nearly one out of every two fatality markers are there because of alcohol involvement.

The state erects signs on the State Highway System and furnishes all signs to be placed on county and township roads and city streets.

One sign is erected for each person killed, with each sign mounted on a separate post. Placement shall be at approximately 10 foot intervals, in a line one foot inside the right-of-way.

When the "THINK" sign is erected and the family requests its removal, it will be expeditiously removed.

Fatal accident markers will be left in place until they are no longer in satisfactory condition because of sign face damage or deterioration; in which case, they shall be taken down. An exception to this requirement shall be when a section of highway is reconstructed to new standards, all markers which involve the old roadway shall be taken down, regardless of condition.

Markers which are removed will not be replaced unless so requested by a family member. This applies to all markers including those found missing as the result of being removed by others.

As further information, we cannot authorize or give permission for others to use this sign or same design. The message and layout used on the sign were developed by an insurance company, State Automobile and Casualty Underwriters, Inc. of Des Moines, Iowa and used by them to mark fatal accident locations for many years. The company eventually discontinued the practices of installing these devices in the 1960's, but retained the trademark right to them which they have held since 1951. The South Dakota Department of Transportation obtained written approval from the company to use their marker on streets and highways in the state, but only on the condition that we do not treat the design as our own. Accordingly, we are not in a position to approve of the

“THINK” sign being duplicated and used on roads outside of the state since the sign is not registered to us.

We hope the above will provide the information you requested. Thank you for contacting us concerning this matter.

Sincerely

Vevette Walker, Statistician

defocus·blog

photography and the open road.

March 16, 2009

X Marks The Spot – South Dakota Signs

When you're driving through South Dakota, eventually you start noticing these signs. It's not immediately clear what they mean, but they're all over the place. "X Marks The Spot," they say. "Think! Drive Safely." On the other side, the same design, but instead of "Think!" it's "Why Die?"

Eventually, you figure it out, or you Google it and end up on a page like this: they are officially called "fatality markers," and the state of South Dakota places one at the site of every auto accident fatality.

The program started in 1979, so there are a lot of signs. They are placed off the road, usually near the right-of-way line, often on the cattle fence. They aren't put up if the victim's family objects. If they come down, by accident or construction or whatever, they are not replaced unless the victim's family asks.

The placement means they're not right up in your face. I think the subtlety makes them effective. You're driving along, and you see one off to the side, and hey -- someone died here doing exactly what I'm doing right now.

Sure, you could argue to yourself, maybe they weren't. Maybe they were drunk or doing something else stupid. But not all of them were; some were just on their way to Mount Rushmore, or the Badlands, or the grocery store. The road from Spearfish Canyon to Deadwood has quite a few signs. And not one of them was part of the plan.

So, maybe you do as the sign asks, and think about it. Maybe this curve is more dangerous than it looks. Maybe people blow that stop sign a lot. Driving a car is one of the most dangerous things most people ever do, and maybe it's worth concentrating on doing it well, rather than talking on the phone or daydreaming.

It's something worth thinking about.



Posted by Jeremy in [Travel](#)

Comments for this thread are now closed.

2 Comments defocus.net

Login

Sort by Best

Share Favorite



Anna H 6 years ago

I think about it everyday, every time I see one, because May 3rd 1992 my sister was killed in a car accident that we were in in Springfield SD. I think education is key. I like this site. Nice job.

[Share](#)



Dee Dee Panelli 6 years ago

We were traveling through SD when we noticed these signs and had to look them up. It is very interesting to see, especially when there are several of the same signs in one place. It is very powerful!

[Share](#)

[Subscribe](#)

[Add Disqus to your site](#)

Labels: america, itineraries, places i've been, road trips, south dakota, travel photos, travel tips, where to eat, wild wild (mid)west, wyoming

No comments:

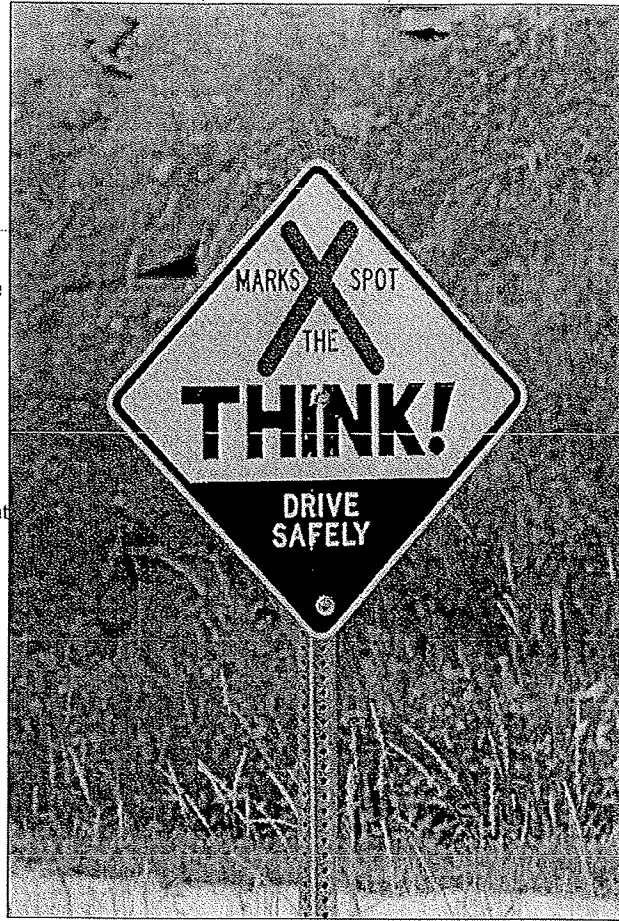
[Post a Comment](#)

[Newer Post](#)

[Subscribe to: Post Comments \(Atom\)](#)

[Home](#)

[Wat](#)



10 of 10

Illinois only
for DUI

Joint Committee on Administrative Rules

ADMINISTRATIVE CODE

**TITLE 92: TRANSPORTATION
CHAPTER I: DEPARTMENT OF TRANSPORTATION
SUBCHAPTER f: HIGHWAYS
PART 549 ROADSIDE MEMORIALS
SECTION 549.400 DESIGN OF DUI MEMORIAL MARKERS, FATAL ACCIDENT
MEMORIAL MARKERS, AND COMMEMORATIVE PLAQUES**

Section 549.400 Design of DUI Memorial Markers, Fatal Accident Memorial Markers, and Commemorative Plaques

- a) The DUI memorial marker shall be a standard size of 36 inches wide by 24 inches tall with the message "Please Don't Drink and Drive" in white lettering on a retroreflectorized blue background and shall bear the Illinois Department of Transportation Sign Standard Number I1-I108a.
- b) The fatal accident memorial marker shall be a standard size of 36 inches wide by 24 inches tall with the message "Reckless Driving Costs Lives" in white lettering on a retroreflectorized blue background and shall bear the Illinois Department of Transportation Sign Standard Number I1-I108b. (See Section 23(d) of the Act.)
- c) The DUI or fatal accident memorial marker may be supplemented by a commemorative plaque having a standard size of 36 inches wide by 18 inches tall mounted underneath with the message "IN MEMORY OF (Victim's Name)" and the date of the applicable crash in white lettering on a retroreflectorized blue background and shall bear the Illinois Department of Transportation Sign Standard Number I1-I108. (See Sections 20(a) and 23(d) of the Act.)

(Source: Amended at 35 Ill. Reg. 1081, effective December 29, 2010)



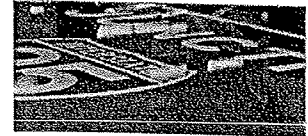
E-Updates | FL511 | Mobile | Site Map

[Home](#) [About FDOT](#) [Contact Us](#) [Maps & Data](#) [Offices](#) [Performance](#) [Projects](#)

Office of Maintenance

Office of Maintenance / Memorial Markers

Memorial Markers



Welcome

The Florida Department of Transportation established the Memorial Marker Program to commemorate those who have died as a result of a vehicle related accident on the State Highway System. In an effort to increase public awareness of highway safety, it is the Department's policy to allow the placement of memorial markers within the state road right of way.

The markers consist of a round 15" diameter aluminum sign panel with white background and black letters mounted to a 5 ft. steel u-channel post. All markers are uniformly inscribed "Drive Safely, In Memory" followed by the deceased's name. They are manufactured at the FDOT sign fabrication facility and the Department absorbs all costs for the construction, installation and maintenance of the markers in order to offer them free to the public. They are allowed to remain on the right of way for one year and the Department reserves the right to have them removed due to construction or other maintenance needs.

The markers may not necessarily be placed at the exact location where the fatality occurred due to restricted space, safety concerns, property owner complaints or other constraints. The Department installs markers only on designated state roads and does not have the authority to place them on City or County roads. Memorial markers will not be erected where they are prohibited by the local governmental entity.

Requests for memorial markers may be made by immediate family members or friends, with requests from friends requiring the approval of the deceased's immediate family.

Helpful Info

Some documents within this website are pdf files and must be viewed with: [Adobe Acrobat Reader](#)

Submit a question or comment concerning this website by [clicking here](#).

How to request a Memorial Marker

In order to request a Memorial Marker you need to contact your County's local FDOT office. Your County's Toll-Free phone number is provided below:

Alachua
Baker
Bay
Bradford
Brevard

