

NOTICE OF MEETING OF THE HUMAN SERVICES & HEALTH BOARD

There will be a meeting of the Human Services & Health Board on Wednesday, July 8, 2015 at 7:00 P.M. in Room # G46, on the Ground Floor of the Henry Dodge Office Building, located at 199 County Road DF, Juneau, Wisconsin.

The Agenda for the Meeting is as follows:

1. **Call to Order**
2. **Roll Call**
3. **Certification of Public Notice**
4. **Consideration to Deviate from the Agenda if Needed**
5. **Approval of Minutes of the June 3, 2015 meeting**
6. **Public Forum:**
7. **Board Action:**
 - A. Approve the appointment of Jane Ennis and the re-appointment of Phil Gohr and William Hoekstra to the Nutrition Advisory Council and the Aging Advisory Committee. Approve the appointment of Lorna Negen to the ADRC Governing Board.
 - B. Consider and discuss a proposed County Board Resolution to change the level by which the Dodge County Board of Supervisors exercises budgetary appropriation control in the Dodge County Annual Budget, from the business unit level to the department level.
8. **Director's Report – Ms. Wimmer:**
9. **Division Reports – As Needed:**
 - A. **Fiscal & Support Services Division – Mr. Kamps:**
 1. Review of May, 2015 expenditures & revenues.
 - B. **Community Support Services Division – Ms. Drays:**
 1. Aging/Nutrition/Transportation/ADRC items:
 - Included in the packet are copies of the following:
 - ADRC Call Statistics 2014 – 2015 report;
 - May senior dining center comments & dining statistics;
 - Most recent Volunteer Drivers 2015 Report;
 2. Economic Support Items:
 - Included in the packet are copies of the following:
 - Most recent economic support caseload statistics;
 - General relief report.
 3. Long Term Support Items:
 - Included in the packet are copies of the following:
 - 2014 & 2015 Adult Services activities report

- Thank you note from Care Wisconsin

4. Public Health items – Ms. Langfeldt:

- Included in the packet are copies of the following:
 - Public Health Program Statistics 2015;

C. Clinical & Family Services Division – Ms. Schultz.

1. Child Welfare/Childrens Long Term Care:

- Included in the packet are copies of the following:
 - Most recent Kinship Care Report;
 - Child and Adolescent Services data;
 - 2015 Children's Monthly Out-of-Home Placement Costs.

2. Mental Health/AODA items:

- Included in the packet are copies of the following:
 - Clinical Services Program Statistics 2015;

10. **Next Meeting Date:** August 5, 2015 @ 7:00 p.m.

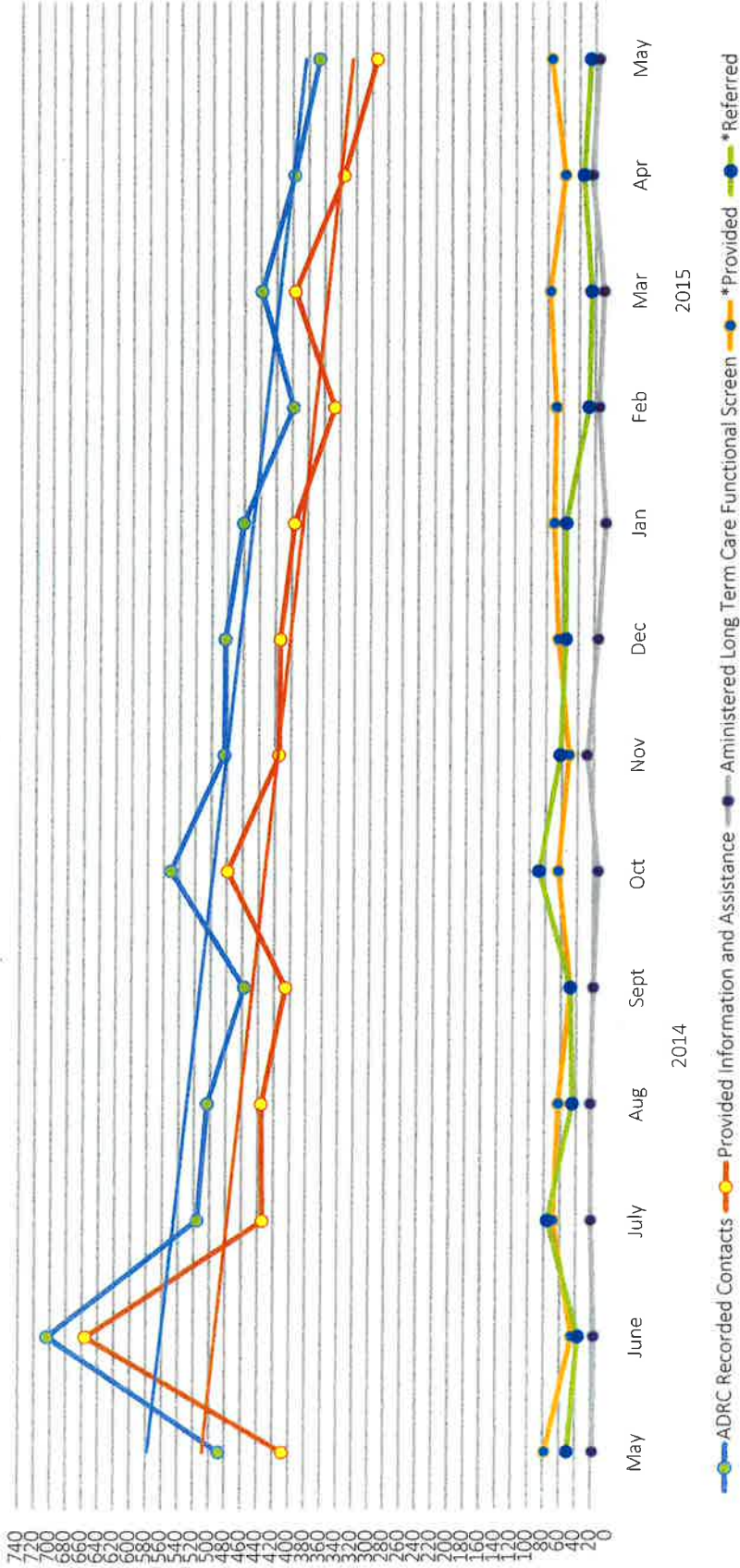
11. **Adjourn**

“What you get by achieving your goals is not as important as what you become by achieving your goals.”

----Zig Ziglar

Any person wishing to attend who, because of a disability, requires special accommodation, should contact the Dodge County Human Services & Health Department administrative offices at (920) – 386-3501, at least 24 hours before the scheduled meeting so appropriate arrangements can be made. The building entrance which is accessible by a person with a disability is located on the east side of the Henry Dodge Office Building located at 199 County Road DF, Juneau, WI 53039.

ADRC Call Statistics Report 2014 - 2015



* Provided Includes: Options Counseling, Follow up, Assistance with Medicaid application process, Brief or short-term services or service coordination, Youth transition support, Enrollment Consultation, Disenrollment Consultation and Assistance/Referral for health promotion or information

* Referred Includes: Economic Support, Financial-Related needs other than economic support, Private Pay Service Options, Mental Health Services and Substance Abuse Services

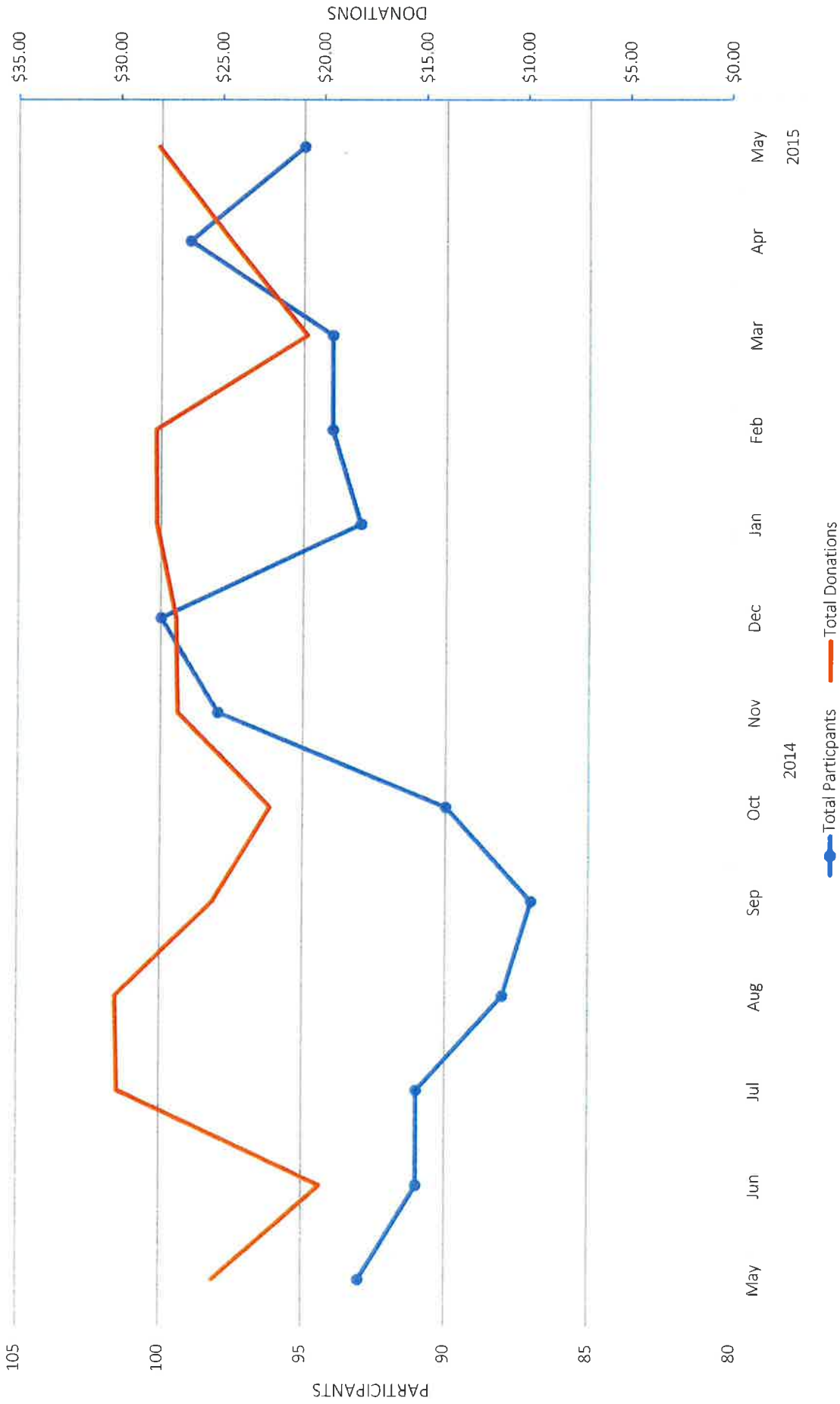
DINING CENTER COMMENTS

May 2015

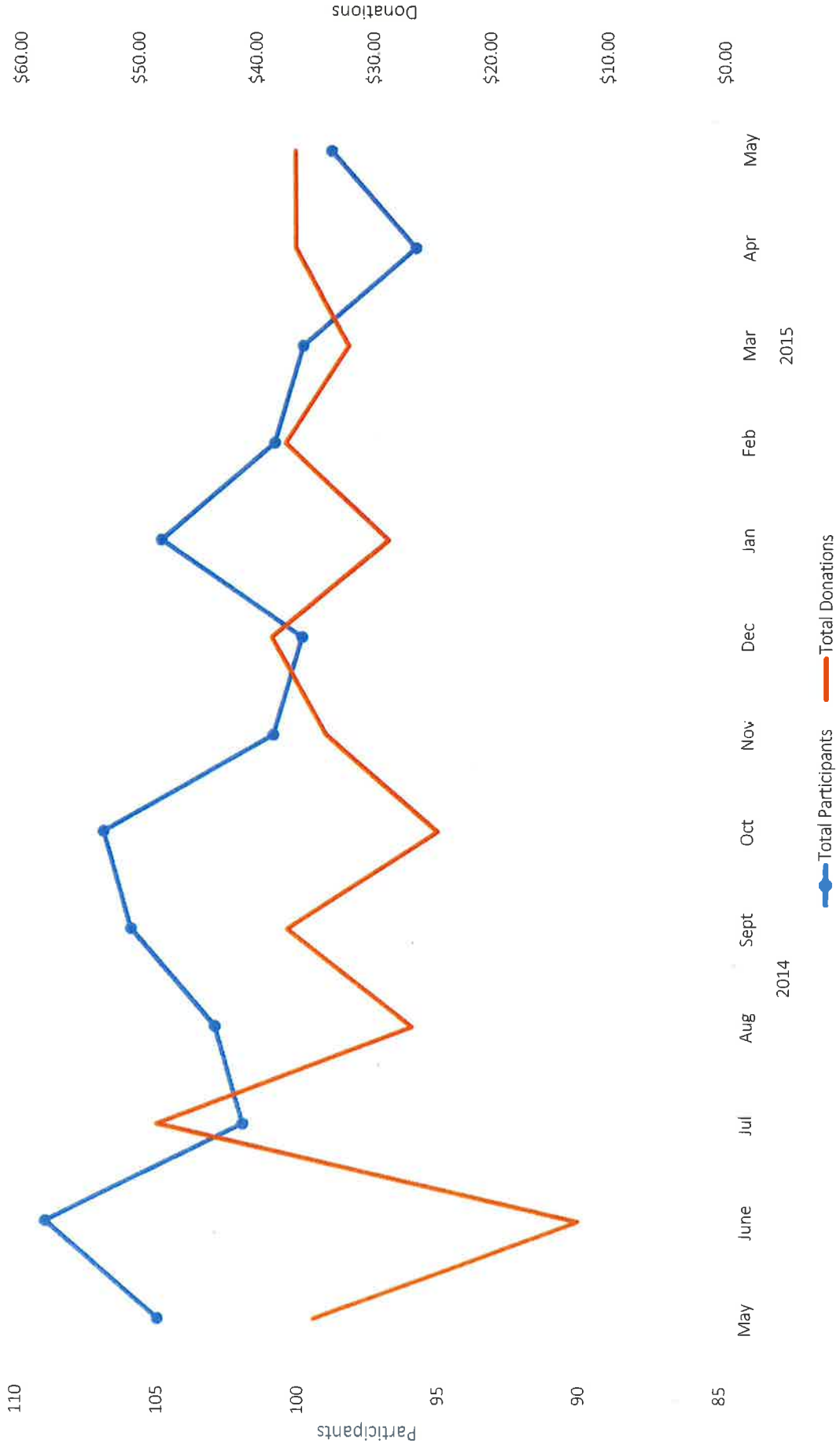
May	4	Bay Shore	Almost everyone enjoyed the Salisbury Steak!
	4	Lomira	The mashed potatoes were tan in color!
	5	Bay Shore	Three dining center participants complained the vegetables were too soft.
	5	Fox Lake	The vegetables were mushy and tasteless.
	5	Randolph	The Lasagna Casserole was delicious.
	5	Watertown	Everybody liked the Lasagna Casserole. Suggested maybe a pizza one.
	6	Bay Shore	They enjoyed the ham rolls.
	6	Randolph	They enjoyed the cole slaw, squash and ham rolls.
	7	Bay Shore	All but one dining center participant commented on how small the chicken breasts were.
	8	Hustisford	The brocolli was overcooked.
	8	Randolph	They liked the cheesy potatoes today.
	11	Randolph	The BBQ Pork Cutler was very tender!
	13	Randolph	The chicken was very good.
	14	Bay Shore	Great comments about the Smoked Sausage!
	15	Bay Shore	Very disappointed that there wasn't gravy for the mashed potatoes.
	18	Watertown	The Glazed Ham meal was very well liked!
	21	Bay Shore	Two people commented they did not like the meatloaf.
	22	Randolph	The cantaloupe was very good and the Pork Jagerschnitzel was super tender!
	26	Beaver Dam	Some said the German Potato Salad was dry.
	26	Lowell	The potatoes in the German Potato Salad were very hard, tasted not cooked.

- 26 Randolph That Bratwurst had mixed reviews as some said it tasted like a hot dog with some liking it and some not.
- 26 Watertown The potatoes in the German Potato Salad were not cooked enough.
- 28 Hustisford We did not get any cornbread and only received salad dressing packets for half of the people.
- 28 Randolph The Chili Casserole was very good but the corn bread didn't go over well.

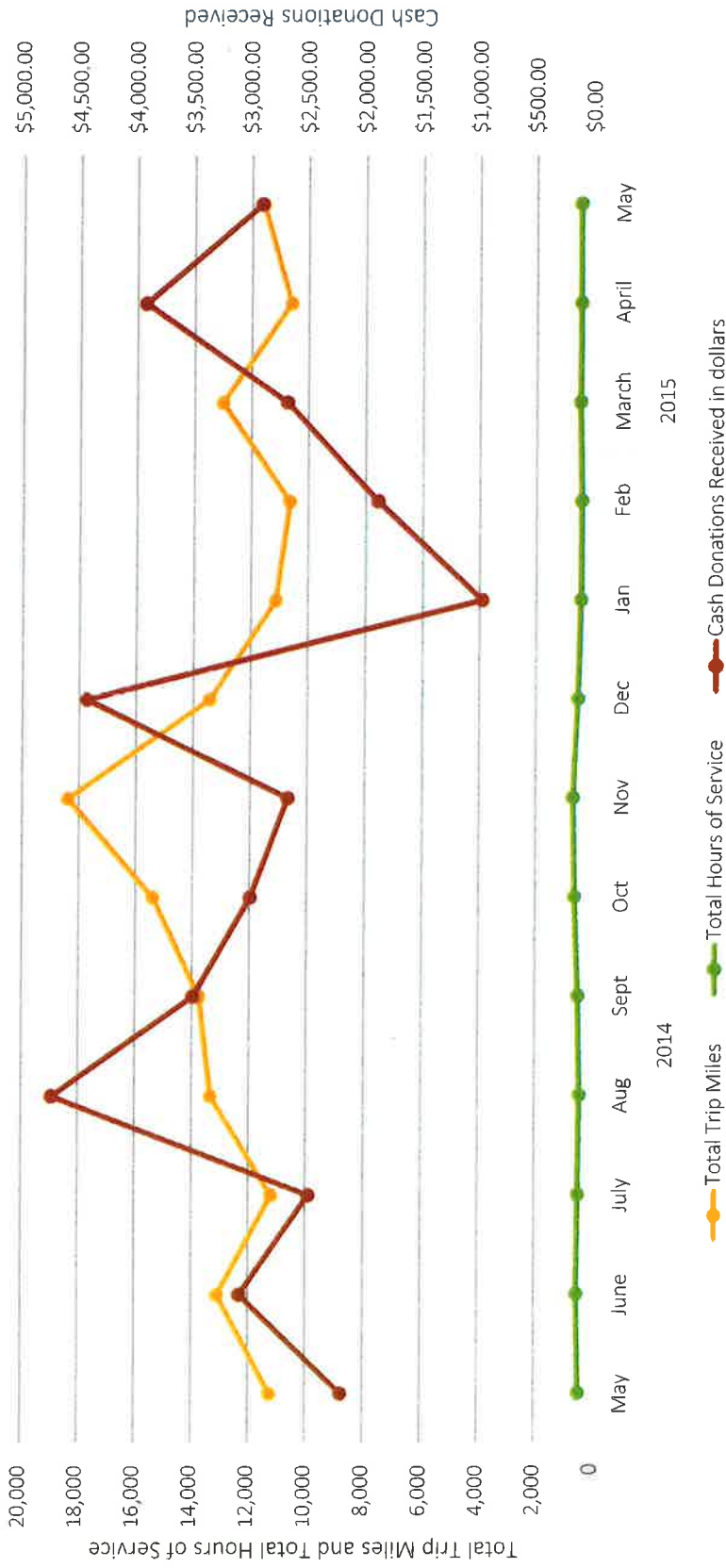
2014 - 2015 Congregate Meal Site Participants and Donations



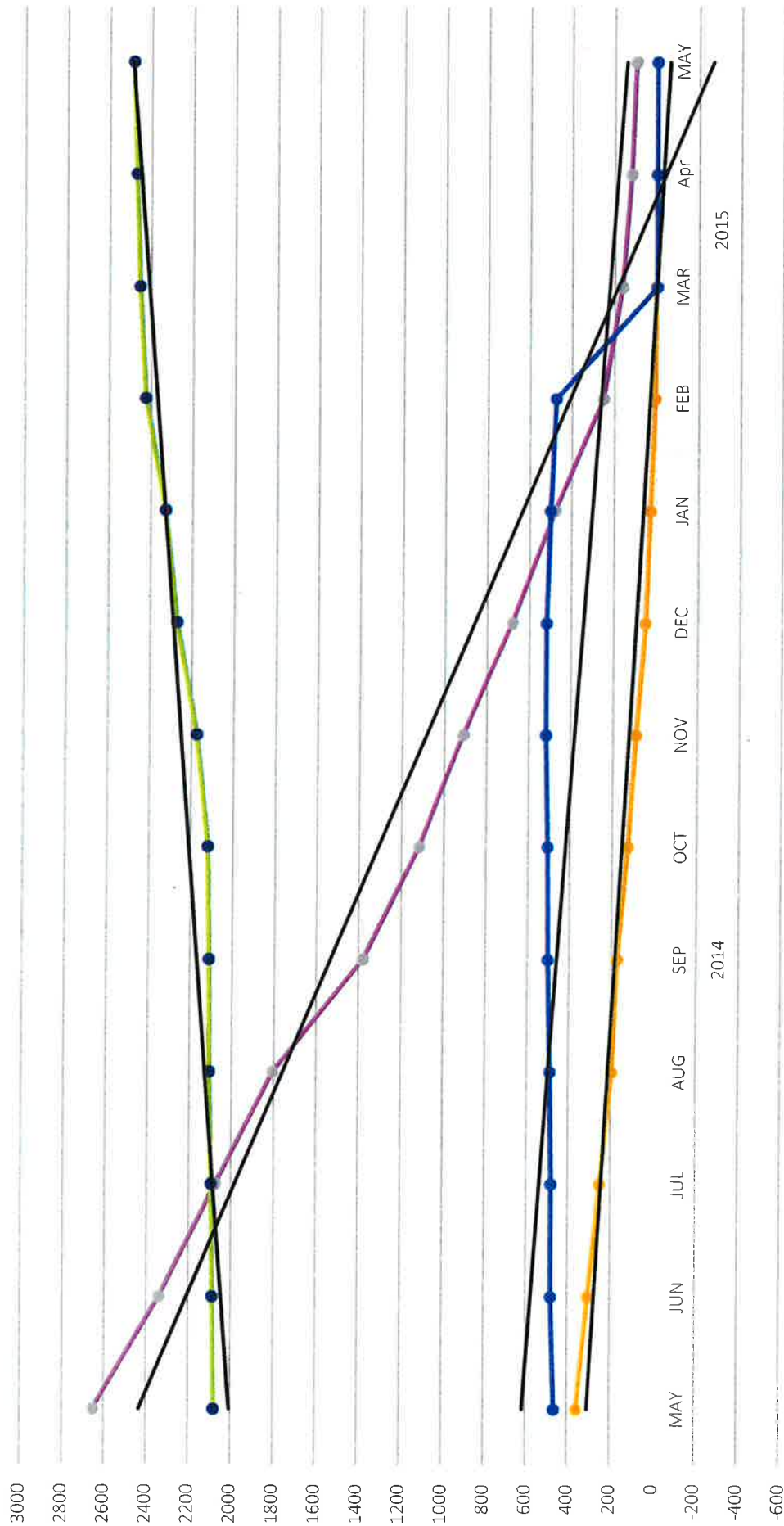
2014 - 2015 Home Delivered Meal Participants and Donations



Volunteer Drivers 2014 and 2015



Dodge County Economic Support 2014 - 2015 Healthcare Caseloads (Unduplicated)

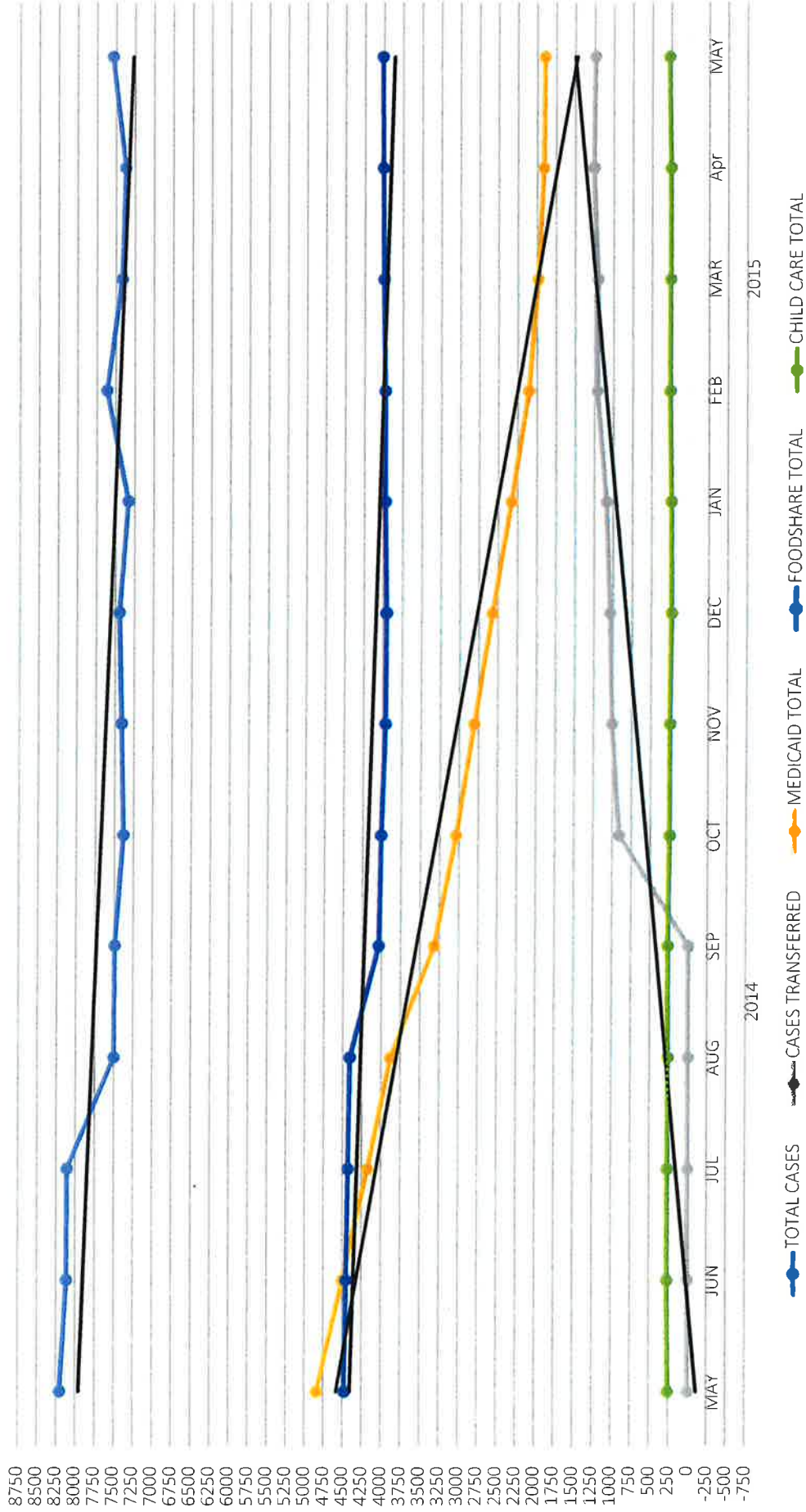


● BADGERCARE
 ● FAMILY PLANNING ONLY SERVICES
 ● FAMILY CARE
 ● FAMILY FACILITATED MARKETPLACE
 ● FEDERALLY FACILITATED MARKETPLACE

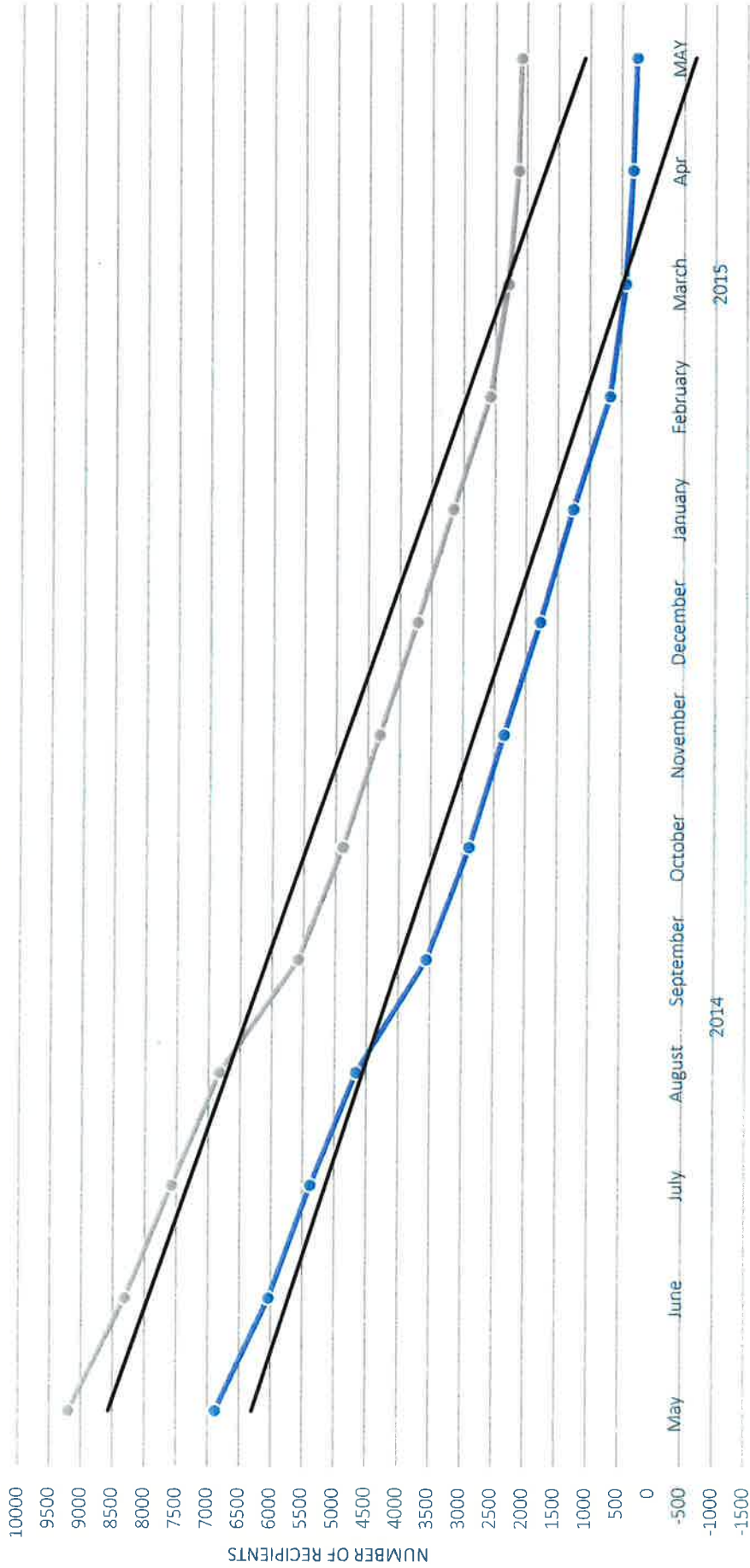
Dodge County Economic Support
 2014 - 2015 Food Share Employment & Training, Child Care Only & New Application Caseloads
 (Unduplicated)



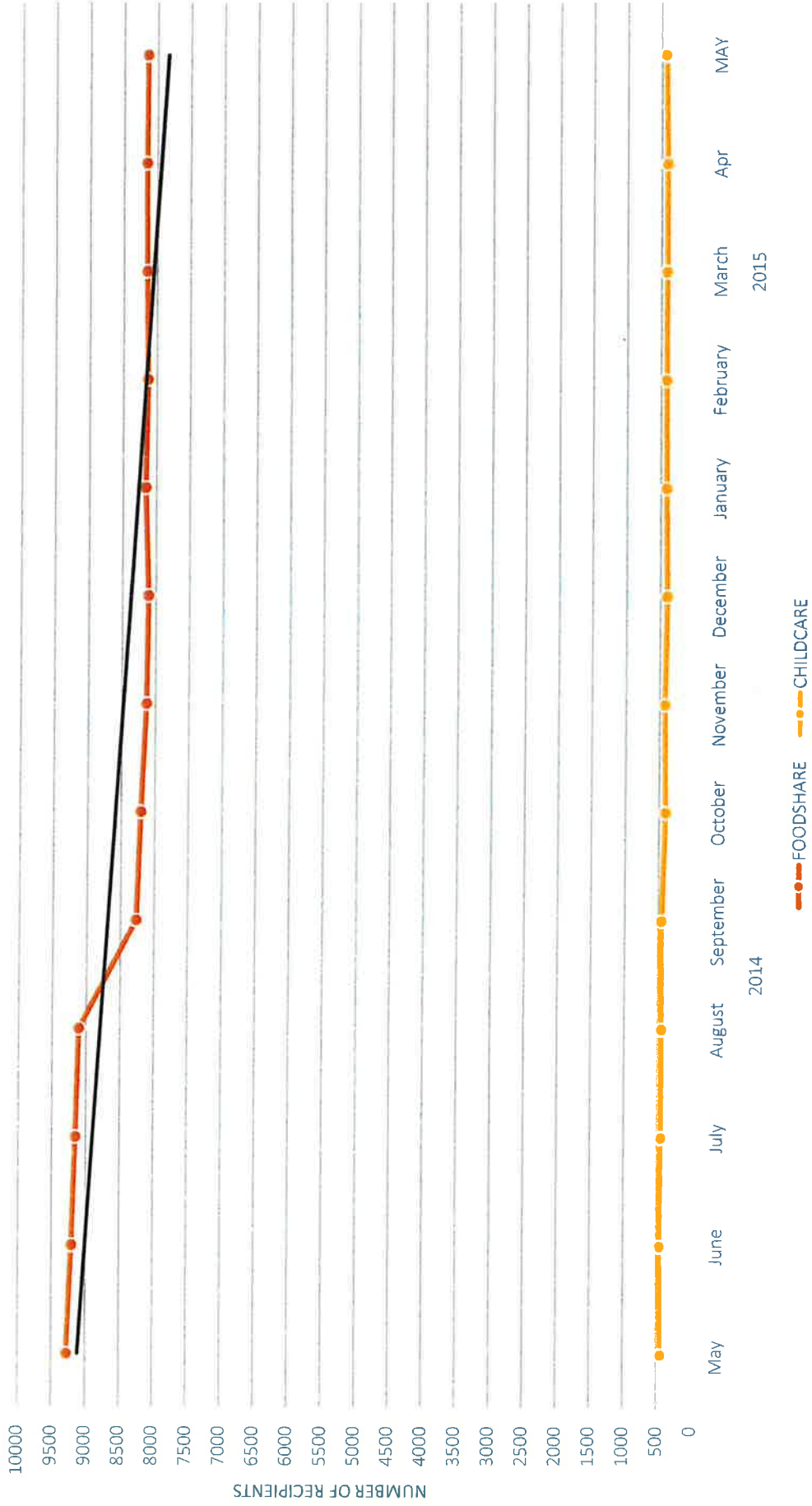
Economic Support Caseload Totals 2014 - 2015



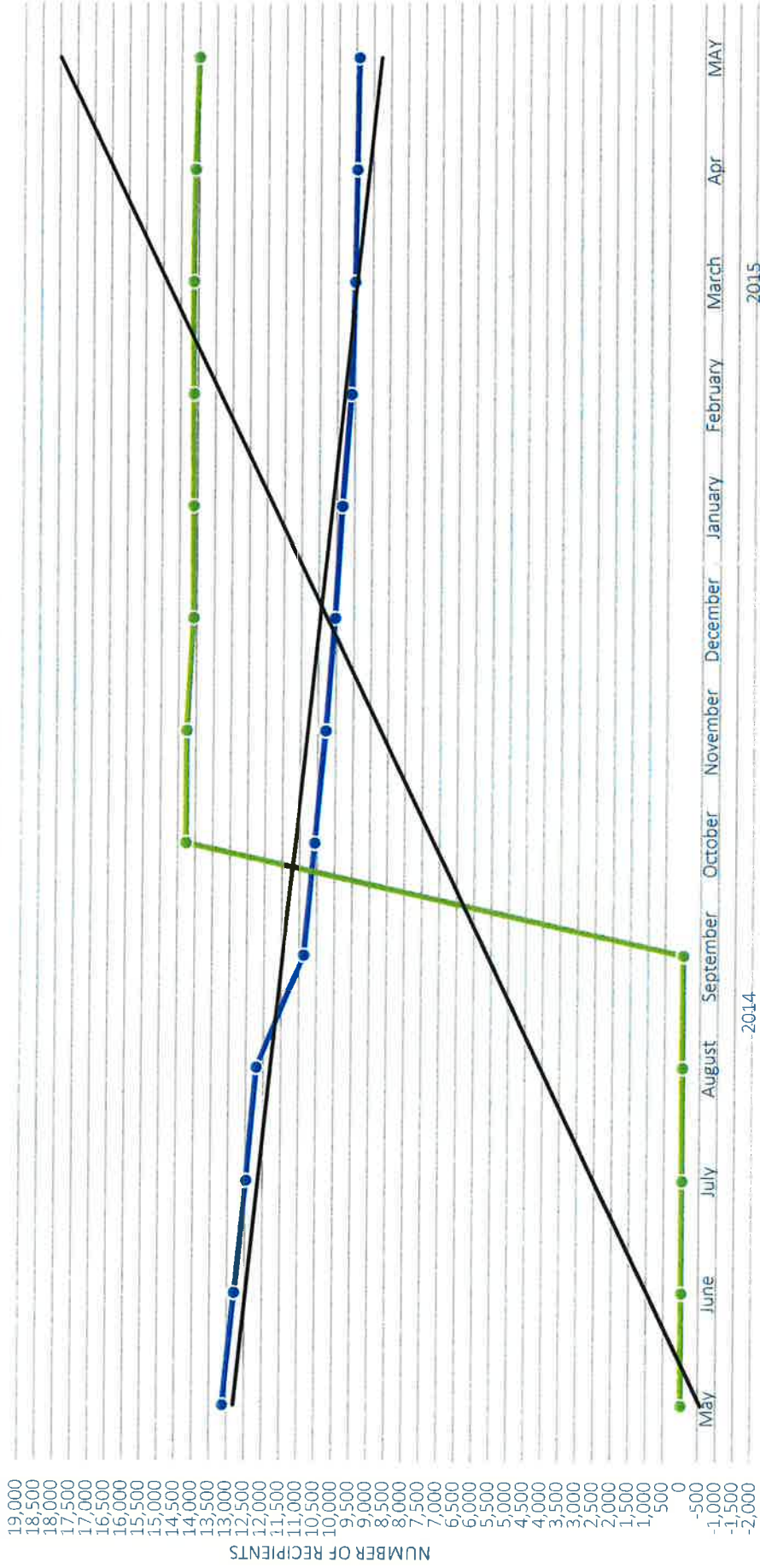
2014 - 2015 TOTAL ECONOMIC SUPPORT RECIPIENTS SERVED MONTHLY IN BADGERCARE & MEDICAID



2014 - 2015 TOTAL ECONOMIC SUPPORT RECIPIENTS SERVED MONTHLY IN FOODSHARE & CHILDCARE



2014 - 2015 TOTAL ECONOMIC SUPPORT NET AND GROSS RECIPIENTS



Net Recipients:

This is the number of county residents Dodge County staff work with.

Gross Recipients:

This is the number of county residents receiving assistance which includes those handled by other counties in the consortia



HUMAN SERVICES & HEALTH DEPARTMENT
Juneau, Wisconsin 53039

Janet A. Wimmer, Director

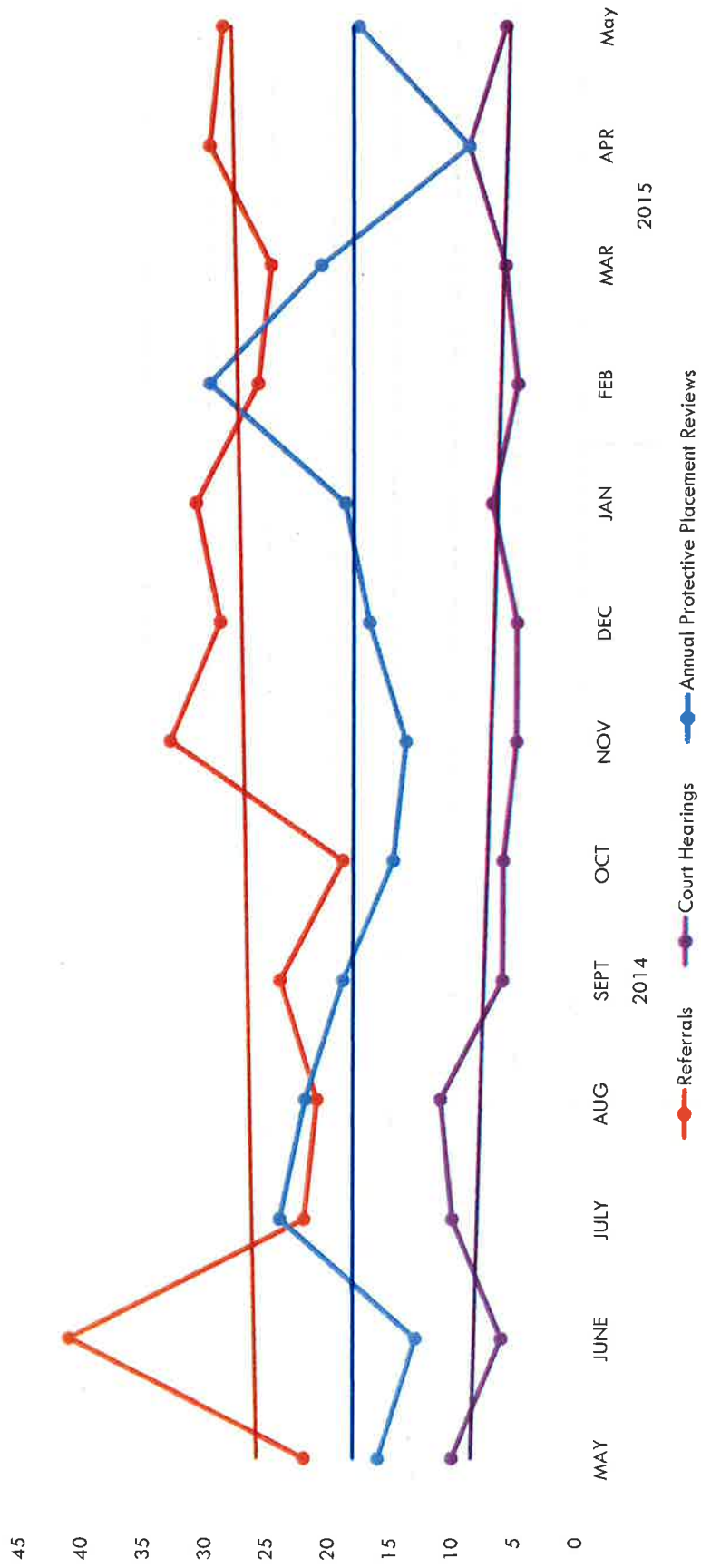
- Administration
143 East Center Street
(920) 386-3501
- ADRC
Aging & Disability
Resource Center
199 County Road DF
Aging
(920) 386-3580
Nutrition
(920) 386-3580
Transportation
(920) 386-3832
Fax: (920) 386-4015
- Adult Protective
Services & Supportive
Home Care
199 County Road DF
(920) 386-3750
Fax: (920) 386-3245
- Alcohol and
Drug Abuse
199 County Road DF
(920) 386-4094
Fax: (920) 386-3812
- Child Welfare
199 County Road DF
(920) 386-3750
Fax: (920) 386-3533
- Community Support
Program and
Comprehensive
Community Services
199 County Road DF
(920) 386-4094
Fax: (920) 386-3812
- Economic Support
199 County Road DF
(920) 386-3760
Fax: (920) 386-4012
- Mental Health
199 County Road DF
(920) 386-4094
Fax: (920) 386-3812
- Public Health
143 East Center Street
(920) 386-3670
Fax: (920) 386-4011

TO: Human Services and Health Board
RE: General Relief Program Report
FOR: May 2015
(Month) (Year)

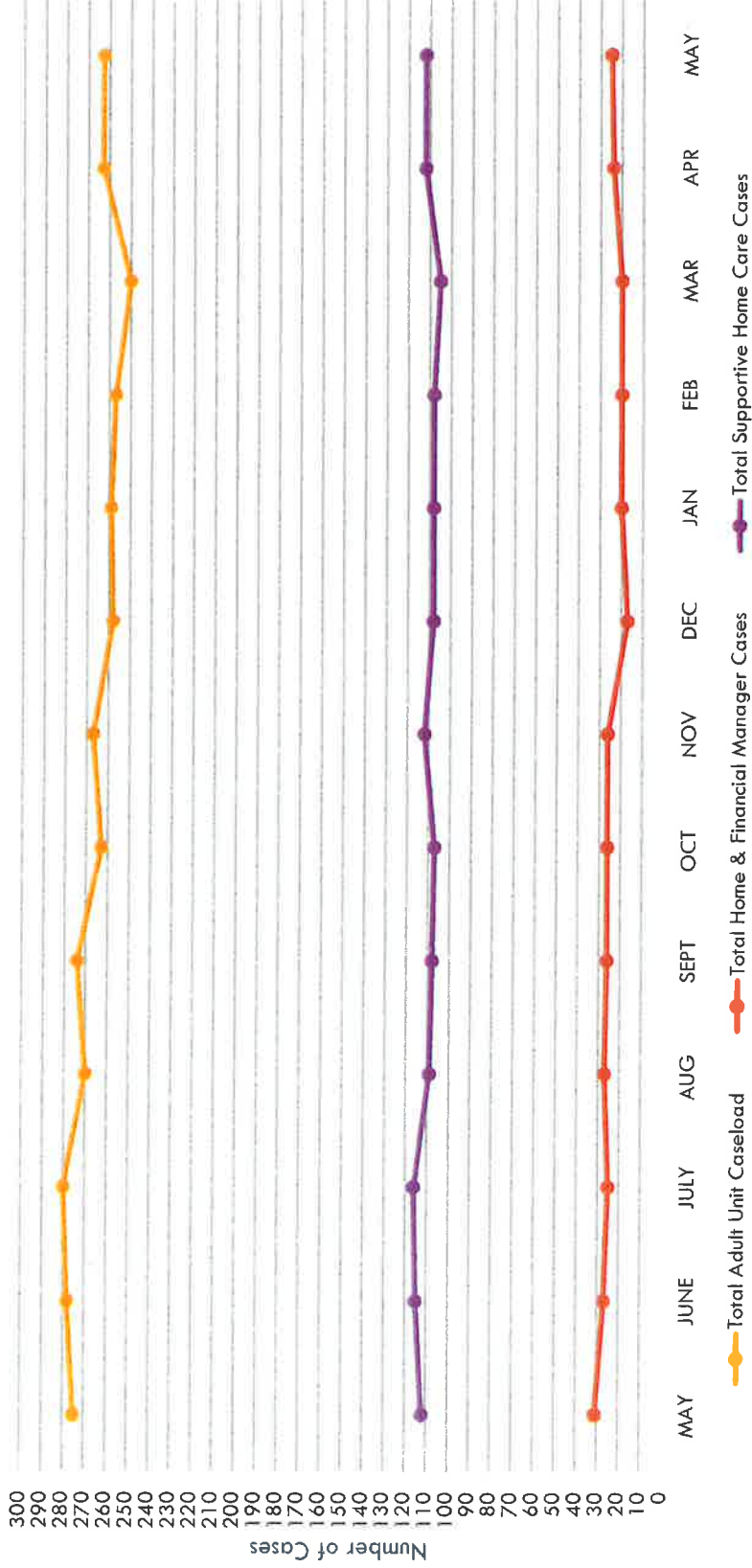
The General Relief cost this month was \$0
The total cost of the program to-date has been \$0, leaving a balance in the General Relief budget for this year of \$3,000.00. The payments for the month totaled \$0 in cash grants and \$0 in medical expenses. The yearly total for cash grant payments is \$0 and for medical payments is \$0.
If program expenses continue to run at this level for the remainder of the year, the General Relief budget will show a year-end surplus of \$3,000.00.

Sincerely,
Amy Beranek, Economic Support Supervisor
Amy Beranek 6/23/15
Signed Date

2014 & 2015 Adult Protective Services Long Term Support Report



2014 - 2015 APS Long Term Support Caseload Report



From: ReBecca Schmidt [<mailto:schmidtr@carewisc.org>]
Sent: Tuesday, June 16, 2015 11:17 AM
To: Goetsch, Doreen
Subject: Thank you.

Hi Doreen,

I just wanted to say thank you for all of your support to Care Wisconsin and to me. I greatly appreciate your collaborative focus and open communication. There have been so many changes in Dodge with the Family Care Program coming to town. You're always open minded, welcoming, and willing to think outside the box. We can be sure that things will continue to change for all of us into the future. I want you to know that I appreciate you and your leadership very much so.

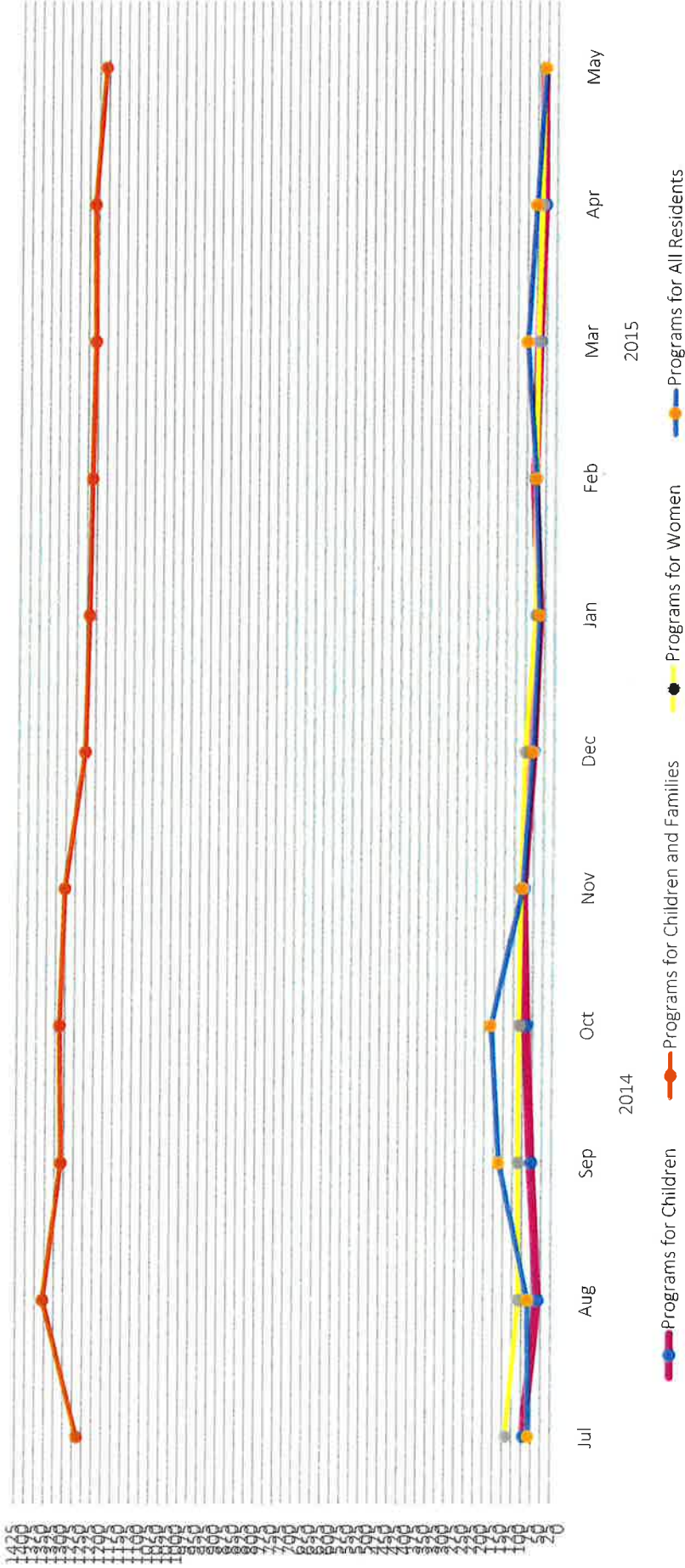


ReBecca Schmidt
Program Manager
Care Wisconsin
1659 N Spring St. STE 102
Beaver Dam WI 53916
Phone: 608-210-4778
Toll Free: 877-496-4412 x4778
Fax: 608-210-4794
www.carewisc.org



CONFIDENTIALITY NOTICE: The information contained in this email including attachments is intended for the specific delivery to and use by the individual(s) to whom it is addressed, and includes information which should be considered as private and confidential. Any review, retransmission, dissemination, or taking of any action in reliance upon this information by anyone other than the intended recipient is prohibited. If you have received this message in error, please reply to the sender immediately and delete the original message and any copy of it from your computer system. Thank you.

2015 Public Health Statistics



Programs for Children:

Fluoride Varnish, Health Check (MA), Infant Home Visits (nonMA), Blood Lead Level Screening, # of levels > 5

Programs for Children & Families:

Birth Certificate packets, Car Seat Safety Inspections, Car Seat Distribution, Cribs for Kids®, First Breath, Well Baby Clinic, WIC Monthly Caseload avg

Programs for Women:

Pregnancy Tests, PreNatal Care Coordination, Well Woman Program, WIC Breastfeeding Peer Support Visits

Programs for All Residents:

Communicable Disease, Environmental Health Services, Health Education (groups), Immunization Clients, Partner Counseling & Referral, Partner Counseling & Referral, Public Health Preparedness Activities, Rabies/Dog Bites, Screenings (TB skin tests/ BP), (Hearing/Vision), TB Follow-up Activities

TO: Ken Kamps, Alyssa Schultz , Shelby Miller & Amy Booher
RE: Monthly Kinship Care Expenditure Report (CARS Profile 377)
FROM: Dodge County Human Services and Health Department
Jackie Oestreich

The reporting month is: MAY 2015

The 2015 Kinship Care Allocation is: \$127,939.00.
(allowing for an average monthly expenditure of \$10,661.58)

The Kinship Care expenses for this month are: \$12,595.37

The year to date Kinship Care expenditures is: \$57,535.10
(the year to date average monthly expenditure is \$11,507.02)

The remaining Kinship Care allocation for this year is: \$ 70,403.90
(should monthly expenditures remain at current level we will
end the year with a deficit of 10,145.24)

The current number of children in the program is: 57

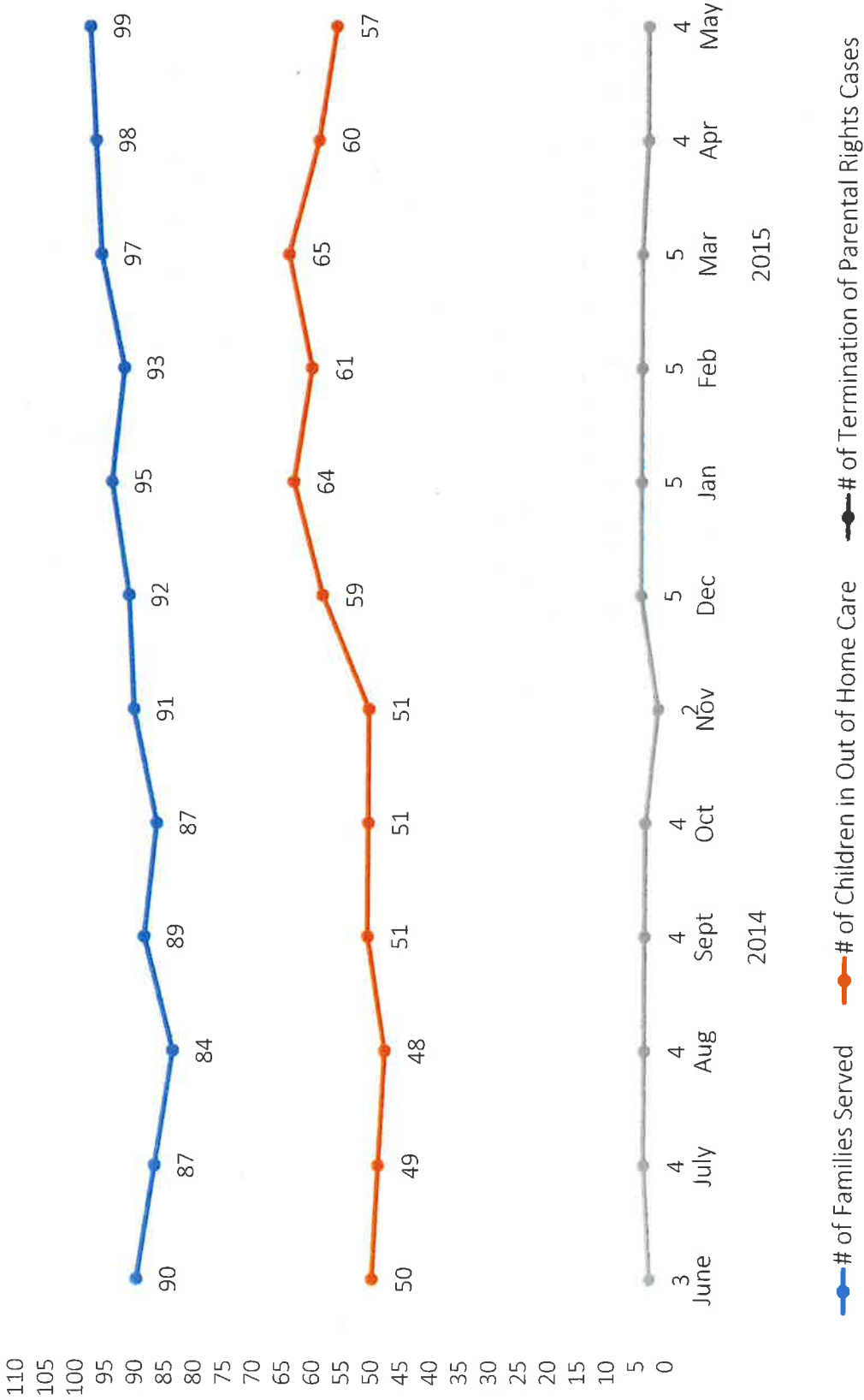
The current number of children on the waiting list is: 0

Total CPS Access Reports



**** This number includes all reports of child abuse and neglect, and families referred for services**

CPS Ongoing Unit Data

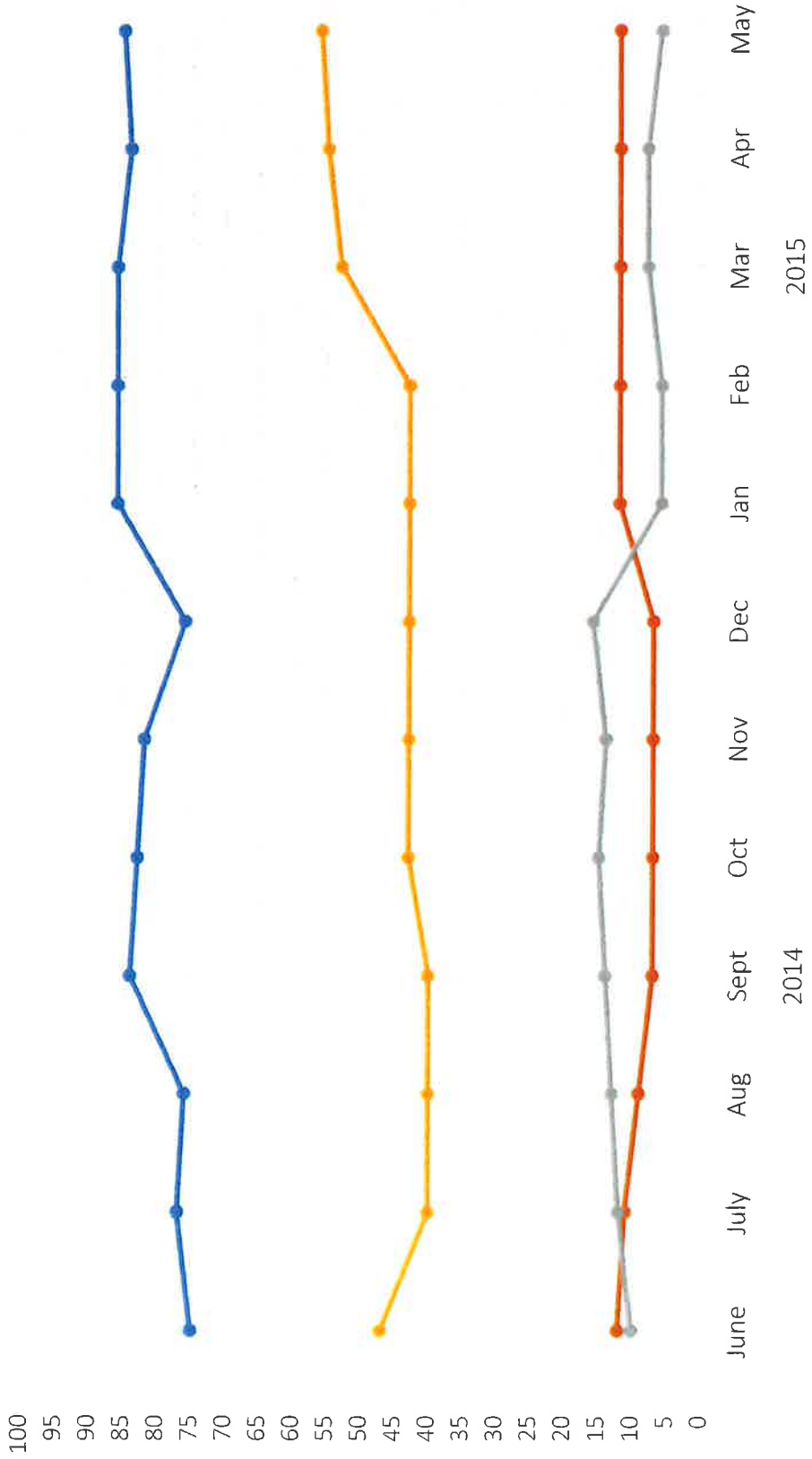


Total # of Juvenile Justice Cases



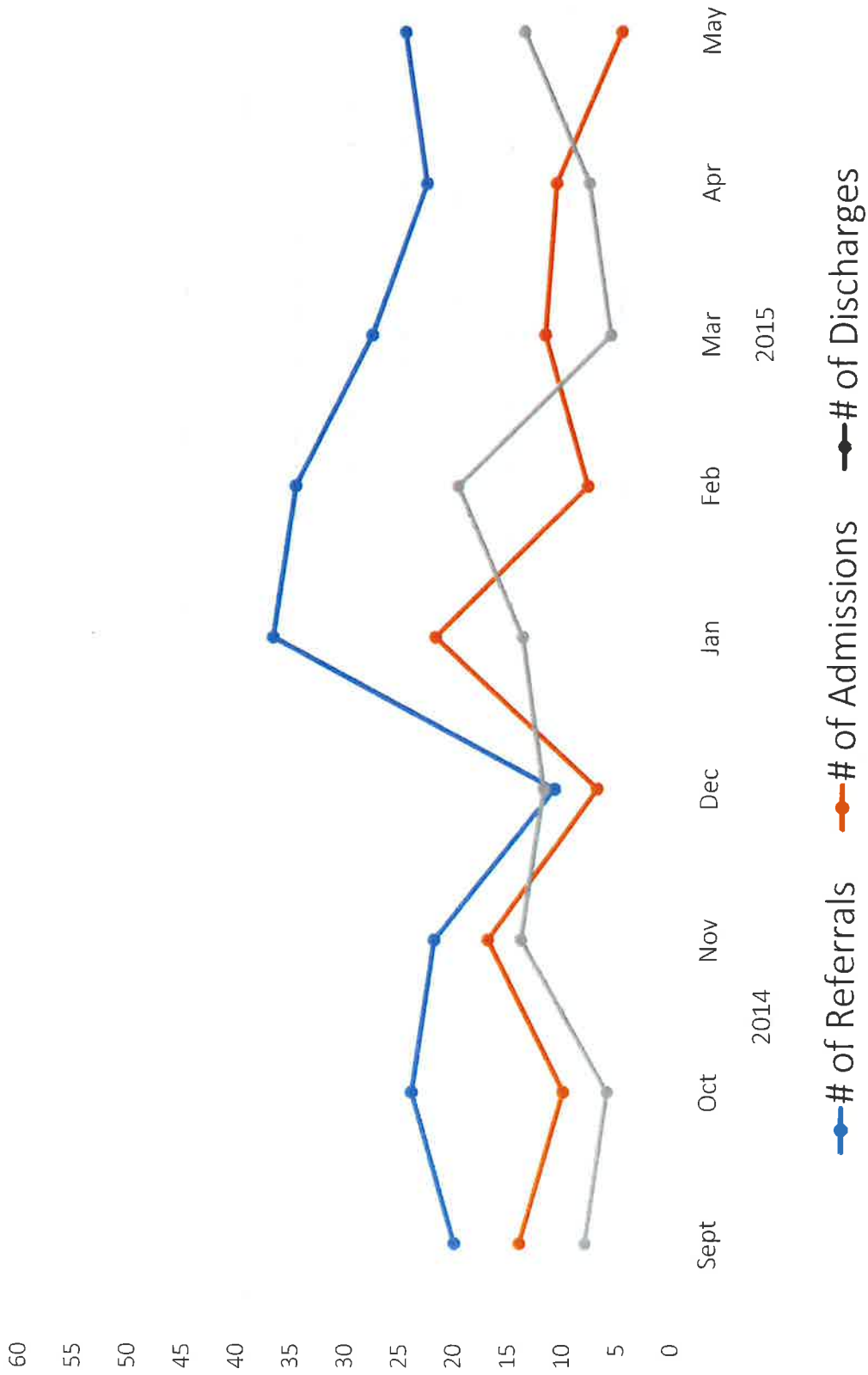
**** Juvenile Justice Cases = total # of adolescents served that have been adjudicated delinquent d/t criminal activities**

Children's Long Term Support and Family Support Data



—●— CLTS enrollment
 —●— FS Enrollment
 —●— Dual CLTS/FS Enrollment
 —●— Wait List

Birth To Three Program Data



2015 Children's Monthly Out-of-Home Placement Costs (# of children / \$\$\$)

	Group Homes		Institutions		Foster Care		FH Respite		Kinship Care		Monthly Total	
January	4	12,594.69	5	50,953.46	35	37,015.12	2	482.00	45	10,267.87	91	111,313.14
February	5	14,861.16	6	53,213.54	32	35,181.16	2	854.00	50	10,605.73	95	114,715.59
March	4	18,011.97	5	51,686.30	32	35,165.67	5	1,098.00	50	11,600.00	96	117,561.94
April	4	15,557.22	5	50,019.00	31	34,726.53	2	1,040.00	54	12,466.13	96	113,808.88
May	4	18,764.37	5	51,686.30	36	36,743.34	4	1,034.00	57	12,595.37	106	120,823.38
June												
July												
August												
September												
October												
November												
December												
Total 2015	17	79,789.41	26	257,558.60	166	178,831.82	15	4,508.00	256	57,535.10	484	578,222.93
Total Revenues/ Adj. Expenses												
Average 2015	3.4	15,957.88	5.2	51,511.72	33.2	35,766.36	3	901.60	51.2	11,507.02	96.8	115,644.58
Total 2014	59	233,797.48	89	810,877.92	387	506,017.21	37	13,194.00	558	127,353.87	1130	1,682,851.48
Average 2014	4.9	19,483.12	7.4	67,573.16	32.2	42,168.10	3.1	1,099.50	46.5	10,612.82	94.2	140,237.62

Number of placements are duplicated month-to-month.

* Total revenues are primarily a combination of collections from Child Support owed and Social Security benefits, as well as Youth Aids funding.

Community-Based MH/AODA Programs



- CSP - Community Support Program**
- CCS - Comprehensive Community Services Program**
- TCM - Targeted Case Management**