

**Notice of Meeting of the Dodge County Board of Supervisors**

There will be a meeting of the Dodge County Board of Supervisors on **Tuesday, May 19, 2015**, at **7:00 P.M.** in the County Board Room located on the fourth floor of the Administration Building, located at 127 East Oak Street, Juneau, Wisconsin.

The Agenda for the Meeting is as follows:

**Call to Order by Russell Kottke, County Board Chairman**

**Pledge of Allegiance**

**Roll Call**

**Approve Minutes from April 21, 2015, County Board Session**

**Communications on File**

**Special Orders of Business**

Confirm Appointments made by County Administrator

1. Re-appoint Mitchell Greenfield and Matthew Gibbs to the Loan Advisory Committee for a one year term, commencing on June 21, 2015 to June 21, 2016, both inclusive.

**Resolutions on File**

- 15-11 Create One Full-Time, Benefited Position of Counselor I, II, or III – AODA in the Human Services and Health Department – Human Services and Health Board.
- 15-12 Transfer Jurisdictional Responsibility to City of Watertown for 0.73 miles of CTH R – Highway Committee.
- 15-13 Authorize Appropriation of Anticipated Revenues and Expenditures and Filling of Two Vacant, Full-Time, Benefited Positions of Utility II/Truck Driver – Finance Committee.
- 15-14 Authorize Sale of MetalFab Property – Taxation Committee.
- 15-15 Confirm Appointment of Andrew W. Miller to the Full-Time, Benefited Position of Veterans Service Officer – Veterans Service Commission.

**Reports on File**

1. Ordinance No. 942 – Amend Land Use Code – Oechsner Farms LLC Property – Section 2, Town of Leroy- Planning, Development and Parks Committee.
2. Ordinance No. 943– An Ordinance to Adopt the Dodge County Comprehensive Plan – Planning, Development and Parks Committee.

**Exhibit A is on file in the Office of the County Clerk and may be viewed there during normal business hours.**

**It may also be viewed on the Dodge County website at the following link:**


**<http://www.co.dodge.wi.us/index.aspx?page=190>**

**Ordinance on File**

1. Ordinance No. 944 – Amend Chapter 9 – Peace and Order, of the Code of Ordinances and Amend Chapter 30 – Construction and Effect of Ordinances, of the Code of Ordinances – Law Enforcement Committee.

**Set Next Meeting Date & Time**

**Recess**

  
Karen J. Gibson, Dodge County Clerk

Any person wishing to attend who, because of a disability, requires special accommodation, should contact the Dodge County Clerk's Office at (920) 386-3600, at least 24 hours before the scheduled meeting time so appropriate arrangements can be made. The building entrance which is accessible by a person with a disability is located on the east side of the building off of Miller Street.

Any invocation that may be offered before the official start of the Board meeting shall be the voluntary offering of a private citizen, to and for the benefit of the Board. The views or beliefs expressed by the invocation speaker have not been previously reviewed or approved by the Board, and the Board does not endorse the religious beliefs or views of this, or any other speaker.

| COMMITTEE NAME            |                     | COUNTY BOARD |         |         |                          |        |                       |        |
|---------------------------|---------------------|--------------|---------|---------|--------------------------|--------|-----------------------|--------|
| MEETING DATE May 19, 2015 |                     |              |         |         |                          |        |                       |        |
|                           |                     |              |         |         | Approval <i>RK</i>       |        | Date <i>5-21-2015</i> |        |
|                           |                     |              |         |         | Chair <i>Russ Kollke</i> |        |                       |        |
| VENDOR                    | NAME                | PRESENT      | ABSENT  | PERDIEM | MILES                    | AMOUNT | MEALS                 | AMOUNT |
| 10023                     | Adelmeyer, Gerald   | X            |         | 50.00   | 43                       | 24.73  |                       |        |
| 11994                     | Behl, Allen         | X            |         | 50.00   | 32                       | 18.40  |                       |        |
| 19566                     | Berres, Jeff        | X            |         | 50.00   | 42                       | 24.15  |                       |        |
| 11970                     | Bischoff, Larry     | X            |         | 50.00   | 20                       | 11.50  |                       |        |
| 10583                     | Bobholz, Janice     |              | Excused |         |                          |        |                       |        |
| 26899                     | Bobholz, Mary       | X            |         | 50.00   | 28                       | 16.10  |                       |        |
| 10008                     | Caine, Chester      | X            |         | 50.00   | 17                       | 9.78   |                       |        |
| 46788                     | Derr, Lisa          | X            |         | 50.00   | 21                       | 12.08  |                       |        |
| 10195                     | Duchac, Jeffry      | X            |         | 50.00   | 30                       | 17.25  |                       |        |
| 37968                     | Fabisch, John       | X            |         | 50.00   | 20                       | 11.50  |                       |        |
| 28760                     | Frohling, David     | X            |         | 50.00   | 29                       | 16.68  |                       |        |
| 43805                     | Gohr, Phillip       | X            |         | 50.00   | 22                       | 12.65  |                       |        |
| 16723                     | Grebel, Randy       | X            |         | 50.00   | 13                       | 7.48   |                       |        |
| 41853                     | Greshay, Richard    | X            |         | 50.00   | 14                       | 8.05   |                       |        |
| 10010                     | Hoelzel, Clem       | X            |         | 50.00   | 32                       | 18.40  |                       |        |
| 43806                     | Houchin, James      |              | Absent  |         |                          |        |                       |        |
| 25412                     | Johnson, Harold     | X            |         | 50.00   | 54                       | 31.05  |                       |        |
| 16348                     | Kottke, Russell     | X            |         | 55.00   | 30                       | 17.25  |                       |        |
| 10015                     | Kriewald, Howard    | X            |         | 50.00   | 20                       | 11.50  |                       |        |
| 29374                     | Maly, Donna         | X            |         | 50.00   | 20                       | 11.50  |                       |        |
| 22503                     | Marsik, Joseph M.   | X            |         | 50.00   | 40                       | 23.00  |                       |        |
| 10313                     | Mattson, Rodger     | X            |         | 50.00   | 20                       | 11.50  |                       |        |
| 34243                     | Miller, MaryAnn     | X            |         | 50.00   | 22                       | 12.65  |                       |        |
| 43804                     | Muche, William      | X            |         | 50.00   | 22                       | 12.65  |                       |        |
| 36482                     | Nelson, Ed          | X            |         | 50.00   | 32                       | 18.40  |                       |        |
| 47109                     | Nickel, Thomas      | X            |         | 50.00   | 34                       | 19.55  |                       |        |
| 10018                     | Pollesch, Darrell   | X            |         | 50.00   | 38                       | 21.85  |                       |        |
| 46789                     | Roesch, Mark E.     | X            |         | 50.00   | 34                       | 19.55  |                       |        |
| 30697                     | Schaefer, Thomas    | X            |         | 50.00   | 30                       | 17.25  |                       |        |
| 15819                     | Schmidt, Dennis     | X            |         | 50.00   | 0                        | 0.00   |                       |        |
| 37252                     | Schraufnagel, Larry | X            |         | 50.00   | 50                       | 28.75  |                       |        |
| 26089                     | Stousland, Glenn    | X            |         | 50.00   | 20                       | 11.50  |                       |        |
| 45723                     | Uttke, Wayne        | X            |         | 50.00   | 50                       | 28.75  |                       |        |

**Dodge County Board of Supervisors  
May 19, 2015 – 7:00 p.m.  
Administration Building - Juneau, Wisconsin**

The May session of the Dodge County Board of Supervisors was called to order by Chairman Russell Kottke at 7:00 p.m. in the County Board Room on the fourth floor of the Administration Building, located at 127 East Oak Street, Juneau.

The Board rose to say the Pledge of Allegiance.

Roll call was taken by the Clerk with all Supervisors being in attendance with the exception of Supervisor J. Bobholz who had previously asked to be excused. Supervisor Houchin was absent.

A motion was made by Supervisor Nickel and seconded by Supervisor Pollesch to approve the minutes of the April 21, 2015, session of the County Board as recorded, and dispense with the reading of the minutes. The motion passed by acclamation with no negative votes cast, and was so ordered by the Chairman.

**Communications on File**

Karen J. Gibson, County Clerk, read a thank you note from the Lost Lake/Randolph Historical Society. The Chairman ordered this be placed on file.

**Special Orders of Business**

Chairman Kottke called the First Special Order of Business: Confirm appointments made by County Administrator, James Mielke. Re-appoint Mitchell Greenfield and Matthew Gibbs to the Loan Advisory Committee for a one year term, commencing on June 21, 2015 to June 21, 2016, both inclusive. A motion to approve the re-appointments was made by Supervisor Fabisch and seconded by Supervisor Stousland. The motion passed by acclamation with no negative votes cast, thereby approving the re-appointments.

The following Resolutions, Reports and Ordinance were read by the Clerk and acted upon by the Board:

**Resolution No. 15-11** Create One Full-Time, Benefited Position of Counselor I, II, or III – AODA in the Human Services and Health Department – Human Services and Health Board. A motion for adoption was made by Supervisor Hoelzel and seconded by Supervisor Schraufnagel. Question by Supervisor Berres answered by Chairman Kottke. The vote was cast with all voting in the affirmative, thereby adopting the Resolution.

**Resolution No. 15-12** Transfer Jurisdictional Responsibility to City of Watertown for 0.73 miles of CTH R – Highway Committee. A motion for adoption was made by Supervisor Muche and seconded by Supervisor Grebel. Comments by Supervisors Caine, Behl, and Berres. The vote was cast with 27 ayes and 4 noes, thereby adopting the Resolution.

**Ayes:** Pollesch, Kottke, Nelson, Marsik, Grebel, Greshay, Kriewald, Schaefer, Adelmeyer, Muche, Gohr, Johnson, Schraufnagel, Bischoff, Caine, Berres, Roesch, Frohling, Schmidt, Duchac, Nickel, Hoelzel, Maly, Fabisch, Stousland, Derr, Mattson. Total 27.

**Noes:** M. Bobholz, Uttke, Behl, Miller. Total 4.

**Absent:** J. Bobholz, Houchin. Total 2.

**Resolution No. 15-13** Authorize Appropriation of Anticipated Revenues and Expenditures and Filling of Two Vacant, Full-Time, Benefited Positions of Utility II/Truck Driver – Finance Committee. A motion for adoption was made by Supervisor Frohling and seconded by Supervisor Johnson. Supervisor Berres made a motion to postpone the Resolution until the June 16, 2015, County Board meeting. Supervisor Maly seconded the motion. Questions by Supervisors Greshay, Bobholz, and Maly answered by Brian Field, Highway Commissioner, Supervisor Johnson, and Chairman Kottke. Comments by Supervisors Johnson, Stousland, Caine, Berres, Muche, Frohling and James Mielke, County Administrator. The vote was cast on the motion to postpone with 6 ayes and 25 noes, thereby defeating the motion.

**Ayes:** M. Bobholz, Uttke, Gohr, Berres, Hoelzel, Stousland. Total 6.

**Noes:** Pollesch, Kottke, Nelson, Marsik, Grebel, Greshay, Kriewald, Schaefer, Adelmeyer, Muche, Johnson, Schraufnagel, Bischoff, Caine, Behl, Roesch, Frohling, Schmidt, Duchac, Nickel, Maly, Fabisch, Miller, Derr, Mattson.. Total 25.

**Absent:** J. Bobholz, Houchin. Total 2.

Supervisor Gohr made a motion to amend Resolution 15-13 by removing the final “*Be it Finally Resolved*” paragraph and replacing it with “*Be it Finally Resolved*, that funds to pay for wages and fringe benefits for these two full-time, benefited positions of Utility II/Truck Driver in 2015 shall be taken from Business Unit 3321, STHS Road/Bridge Maintenance. And in the event that, at any time in the future, Dodge County does not or is not to receive the anticipated \$400,000 from the State of Wisconsin Department of Transportation Performance Based Maintenance Program funding or funds sufficient to fund these positions then, effective immediately, these two positions of full-time benefited Utility II/Truck Driver shall be terminated.” Supervisor Hoelzel seconded the motion. Question by Supervisor Derr answered by Supervisor Gohr. Comment by Supervisor Nelson. The vote was cast on the motion to amend the Resolution with 13 ayes and 18 noes, thereby defeating the motion.

**Ayes:** M. Bobholz, Kriewald, Uttke, Gohr, Schraufnagel, Bischoff, Berres, Roesch, Frohling, Hoelzel, Maly, Miller, Stousland. Total 13.

**Noes:** Pollesch, Kottke, Nelson, Marsik, Grebel, Greshay, Schaefer, Adelmeyer, Muche, Johnson, Caine, Behl, Schmidt, Duchac, Nickel, Fabisch, Derr, Mattson. Total 18.

**Absent:** J. Bobholz, Houchin. Total 2.

The vote was then cast on the Resolution as presented with 25 ayes and 6 noes, thereby adopting the Resolution.

**Ayes:** Pollesch, Kottke, Nelson, Marsik, Grebel, Greshay, Kriewald, Schaefer, Adelmeyer, Muche, Johnson, Schraufnagel, Bischoff, Caine, Behl, Frohling, Schmidt, Duchac, Nickel, Maly, Fabisch, Miller, Stousland, Derr, Mattson. Total 25.

**Noes:** M. Bobholz, Uttke, Gohr, Berres, Roesch, Hoelzel. Total 6.

**Absent:** J. Bobholz, Houchin. Total 2.

**Resolution No. 15-14** Authorize Sale of MetalFab Property – Taxation Committee. A motion for adoption was made by Supervisor Maly and seconded by Supervisor Schmidt. Questions by Supervisors Gohr and Hoelzel answered by Supervisor Mattson, Chairman Kottke and John Corey, Corporation Counsel. Comments by Supervisors Berres, Nelson, Schmidt, and Pollesch. The vote was cast with 28 ayes and 3 noes, thereby adopting the Resolution.

**Ayes:** Pollesch, Kottke, Nelson, Marsik, Grebel, Greshay, Kriewald, Schaefer, Uttke, Adelmeyer, Muche, Gohr, Johnson, Schraufnagel, Bischoff, Caine, Behl, Berres, Roesch, Frohling, Schmidt, Duchac, Nickel, Maly, Fabisch, Miller, Stousland, Derr. Total 28.

**Noes:** M. Bobholz, Hoelzel, Mattson. Total 3.

**Absent:** J. Bobholz, Houchin. Total 2.

**Resolution No. 15-15** Confirm Appointment of Andrew W. Miller to the Full-Time, Benefited Position of Veterans Service Officer – Veterans Service Commission. A motion for adoption was made by Supervisor Caine and seconded by Supervisor Schaefer. The vote was cast with 30 ayes and 1 no, thereby adopting the Resolution.

**Ayes:** Pollesch, Kottke, M. Bobholz, Nelson, Marsik, Grebel, Greshay, Kriewald, Schaefer, Adelmeyer, Muche, Gohr, Johnson, Schraufnagel, Bischoff, Caine, Behl, Berres, Roesch, Frohling, Schmidt, Duchac, Nickel, Hoelzel, Maly, Fabisch, Miller, Stousland, Derr, Mattson. Total 30.

**No:** Uttke. Total 1.

**Absent:** J. Bobholz, Houchin. Total 2.

Supervisor Caine asked for a suspension of the rules to allow newly appointed Veterans Service Officer, Andrew W. Miller, to address the Board. Chairman Kottke asked if anyone objected to the suspension of rule #11. Hearing no objections, Supervisor Caine and Mr. Miller were allowed to address the Board. Supervisor Caine introduced and thanked Mr. Miller for his service to our country. Mr. Miller stated he looked forward to meeting the County Board members and serving, advising, and assisting Veterans in Dodge County.

**Report No. 1** Ordinance No. 942 – Amend Land Use Code – Oechsner Farms LLC Property – Section 2, Town of Leroy- Planning, Development and Parks Committee. A motion for adoption was made by Supervisor Behl and seconded by Supervisor Johnson. The vote was cast with 29 ayes and 2 noes, thereby adopting the Report.

**Ayes:** Pollesch, Kottke, Nelson, Marsik, Grebel, Greshay, Kriewald, Schaefer, Uttke, Adelmeyer, Muche, Gohr, Johnson, Schraufnagel, Bischoff, Caine, Behl, Roesch, Frohling, Schmidt, Duchac, Nickel, Hoelzel, Maly, Fabisch, Miller, Stousland, Derr, Mattson. Total 29.

**Noes:** M. Bobholz, Berres. Total 2.

**Absent:** J. Bobholz, Houchin. Total 2.

**Report No. 2** Ordinance No. 943 – An Ordinance to Adopt the Dodge County Comprehensive Plan – Planning, Development and Parks Committee. A motion for adoption was made by Supervisor Marsik and seconded by Supervisor Schaefer. The vote was cast with 30 ayes and 1 no, thereby adopting the Report.

**Ayes:** Pollesch, Kottke, M. Bobholz, Nelson, Marsik, Grebel, Greshay, Kriewald, Schaefer, Uttke, Adelmeyer, Muche, Gohr, Johnson, Schraufnagel, Bischoff, Caine, Behl, Roesch, Frohling, Schmidt, Duchac, Nickel, Hoelzel, Maly, Fabisch, Miller, Stousland, Derr, Mattson. Total 30.

**No:** Berres. Total 1.

**Absent:** J. Bobholz, Houchin. Total 2.

**Ordinance No. 1** Ordinance No. 944 – Amend Chapter 9 – Peace and Order, of the Code of Ordinances and Amend Chapter 30 – Construction and Effect of Ordinances, of the Code of Ordinances – Law Enforcement Committee. A motion for adoption was made by Supervisor Miller and seconded by

Supervisor Bischoff. Questions by Supervisors Berres, Grebel and Gohr answered by Sheriff Dale Schmidt. Comments by Supervisor Derr and Kurt Klomberg, District Attorney. The vote was cast with 29 ayes and 2 noes, thereby adopting the Ordinance.

**Ayes:** Pollesch, Kottke, M. Bobholz, Nelson, Marsik, Greshay, Kriewald, Schaefer, Uttke, Adelmeyer, Muche, Johnson, Schraufnagel, Bischoff, Caine, Behl, Berres, Roesch, Frohling, Schmidt, Duchac, Nickel, Hoelzel, Maly, Fabisch, Miller, Stousland, Derr, Mattson. Total 29.

**Noes:** Grebel, Gohr. Total 2.

**Absent:** J. Bobholz, Houchin. Total 2.

The Clerk noted the following had been placed on the Supervisor's desks: Memo from Hays Company and the Human Resources and Labor Negotiations Committee, and a Dodge County Friends and Family Run/Walk Event Form. The Chairman ordered these be placed on file.

The Clerk also noted that the 2014-2015 County Board Proceedings Books were available for interested Board members, following the recess of the meeting.

At 8:13 p.m. Supervisor Maly made a motion to recess until Tuesday, June 16, 2015 at 7:00 p.m. Supervisor Schmidt seconded the motion. The motion passed by acclamation, with no negative votes cast, and was so ordered by the Chairman.

Disclaimer: The above minutes may be approved, amended or corrected at the next meeting.

RESOLUTION NO. 15-11

TO THE HONORABLE BOARD OF SUPERVISORS OF DODGE COUNTY, WISCONSIN MEMBERS,

**WHEREAS**, the Dodge County Human Services and Health Board has studied and analyzed staffing needs at the Dodge County Human Services and Health Department; and,

**WHEREAS**, as a result of these studies and analyses, the Human Services and Health Board recommends that the Dodge County Board of Supervisors create one full-time, benefited position of *Counselor I, II, or III – AODA* in the Dodge County Human Services and Health Department, effective May 20, 2015, to provide additional AODA treatment services to clients being served in the Treatment Alternatives and Diversion Program and the Alcohol Treatment Court; and,

**WHEREAS**, job descriptions for the proposed position of *Counselor I, II, or III – AODA* have been marked for identification as Exhibit “A”, “B”, and “C”, respectively, and have been attached hereto; and,

**WHEREAS**, Treatment Alternatives Program Grant Award funds that were awarded to the Human Services and Health Department in 2014, and that have been appropriated to the 2015 Human Services and Health Department Budget in Business Unit 4845, CD-TAP Grant, in various personnel object expenditure accounts, are available and sufficient to fund this proposed position of *Counselor I, II, or III – AODA* during the period of time commencing on May 20, 2015, and ending on December 31, 2015, both inclusive;

**SO, NOW, THEREFORE, BE IT RESOLVED**, that the Dodge County Board of Supervisors hereby creates one full-time, benefited position of *Counselor I, II, or III – AODA* in the Dodge County Human Services and Health Department, effective May 20, 2015; and,

**BE IT FURTHER RESOLVED**, that Treatment Alternatives Program Grant Award funds, that were awarded to the Human Services and Health Department in 2014, and that have been appropriated to the 2015 Human Services and Health Department Budget in Business Unit 4845, CD-TAP Grant, in various personnel object expenditure accounts, shall be used to fund this position of *Counselor I, II, or III – AODA*, during the period of time commencing on May 20, 2015, and ending on December 31, 2015, both inclusive; and,

**BE IT FINALLY RESOLVED**, that in the event that, at any time in the future, Dodge County does not receive Treatment Alternatives Program Grant Award funds from the State of Wisconsin, then, effective immediately, upon the expenditure of all Treatment Alternatives Program Grant Award funds that were previously received by Dodge County from the State of Wisconsin, and without the need for any further action by the Dodge County Board of Supervisors, this position of *Counselor I, II, or III – AODA* shall terminate.



All of which is respectfully submitted this 19<sup>th</sup> day of May, 2015.

**Dodge County Human Services and Health Board:**

Glenn Stousland  
Glenn Stousland

Mary Bobholz  
Mary Bobholz

James Houchin  
James Houchin

Clem Hoelzel  
Clem Hoelzel

David Godshall  
David Godshall

Lois Augustson  
Lois Augustson

Mark Roesch  
Mark Roesch

Gilbert Falkenthal  
Gilbert Falkenthal

Phillip Gohr  
Phillip Gohr

**FISCAL NOTE:**

Is the referenced expenditure included in the adopted 2015 Budget?   X   Yes or        No

Fiscal Impact on the adopted 2015 Budget:  
\$   0  

Fiscal Impact reviewed by the Dodge County Finance Committee on   5/11  , 2015.

David Frohling  
David Frohling, Chairman  
Dodge County Finance Committee

**ADOPTED  
BY DODGE COUNTY BOARD**

MAY 19 2015

AYES   31   NOES   0    
ABSENT   0    
ABSTAIN   0  

Karen J. Gibson  
County Clerk

Vote by Finance Committee Members to Recommend Approval of this Resolution:

David Frohling:   X   Aye        No        Abstain        Absent from Meeting

Wayne Uttke:        Aye        No        Abstain   X   Absent from Meeting

Phillip Gohr:   X   Aye        No        Abstain        Absent from Meeting

Gerald Adelmeyer:   X   Aye        No        Abstain        Absent from Meeting

Thomas J. Schaefer:   X   Aye        No        Abstain        Absent from Meeting

**DODGE COUNTY JOB DESCRIPTION**

**May 2015**  
**Wage Range: \$18.59 - \$25.49**

|                     |                             |                     |                           |
|---------------------|-----------------------------|---------------------|---------------------------|
| <b>JOB TITLE:</b>   | Counselor I - AODA          | <b>FLSA STATUS:</b> | Non Exempt                |
| <b>DEPARTMENT:</b>  | Human Services and Health   | <b>REPORTS TO:</b>  | Human Services Supervisor |
| <b>LOCATION:</b>    | Henry Dodge Office Building | <b>DATE:</b>        | August 14, 2000           |
| <b>LABOR GRADE:</b> | Dodge County Five (5)       | <b>REVISED:</b>     | 11/15/10; 3/20/13         |

**OVERALL PURPOSE/SUMMARY**

Under the general direction of Human Services Supervisor, provides and coordinates services through evaluation, treatment, and rehabilitation of clients and their families. Undertakes diagnostic studies, and initiates appropriate treatment using developed skills and methodology. Plans and carries out prevention and rehabilitation treatment program in alcohol and drug day treatment programs as well as individual outpatient counseling sessions.

**PRINCIPAL DUTIES AND RESPONSIBILITIES**

1. Provides alcohol and other drug abuse assessments utilizing standardized formats.
2. Provides individual or group therapy to assigned clients.
3. Provides telephone/TDD crisis intervention services.
4. Provides interventions for family members and significant supports of persons receiving/needing treatment.
5. Provides community outreach to increase awareness of available agency resources.
6. Refers clients for appropriate services based on comprehensive treatment plan or routine intake.
7. Develops and reviews comprehensive treatment plan for clients based on evaluations, diagnosis, and agency guidelines in accordance with State statutes.
8. Functions as member of multi-disciplinary team for case planning and review.
9. Evaluates client's progress, referring for additional evaluation or alternate treatment, if indicated.
10. Arranges for client transportation when client is unable to self-initiate the process, in accordance with agency procedure.
11. Facilitates for clients receiving treatment, financial aid/other assistance, requests for information, completing appropriate forms, writing clinical summaries, or and assisting medical records personnel in releasing appropriate records.
12. Advocates on behalf of clients to assure client needs are met appropriately and in timely fashion, through meeting with service providers/administration to explain client needs and to facilitate service delivery.
13. Meets with other community agencies/organizations to assist them in providing relevant programs/services for clients or to develop programs to meet other community needs.
14. Provides education programs to schools, self-help groups, and other community organizations with a primary emphasis on prevention education.
15. Serves as contact person to other treatment agencies or organizations.
16. Gathers and provides to administration such information as may be deemed useful for ongoing program evaluation and planning.
17. Participates in staff trainings as deemed appropriate by supervisor.
18. Maintains required and related paperwork in an accurate and timely manner.
19. Regular attendance and punctuality required.
20. Performs related duties as may be required or assigned.

**JOB SPECIFICATION**

**KNOWLEDGE, SKILLS, AND ABILITIES**

Knowledge of individual/group counseling techniques and theories.  
 Knowledge of pharmacology/psychopharmacology.  
 Knowledge of assessment & treatment planning.  
 Working knowledge of applicable Wisconsin State Administrative Codes, including but not limited to, Chapters 34, 37, 51, 55, and 75.  
 Knowledge of counselor ethics/conduct.  
 Skill in working with chronic alcohol and other drug abuse cases and special populations.  
 Ability to work with chemically dependent individuals/families.  
 Ability to communicate effectively.  
 Must meet requirements of Dodge County Driver Qualification Policy.

**EDUCATION AND EXPERIENCE**

Associate Degree and WI State Substance Abuse Counselor Certification and two (2) years directly related experience, OR, Bachelor's Degree and WI State Substance Abuse Counselor Certification and no experience.

**WORKING CONDITIONS**

Office and field working environment. Potential to work in adverse interpersonal situations.

**PHYSICAL DEMANDS**

The County of Dodge is an Equal Opportunity Employer. In compliance with the Americans with Disabilities Act, the County will provide reasonable accommodations to qualified individuals with disabilities and encourages both prospective and current employees to discuss potential accommodations with the employer.

|                         |                               |
|-------------------------|-------------------------------|
| <b>ACKNOWLEDGEMENTS</b> | <b>FOR HUMAN RESOURCE USE</b> |
|-------------------------|-------------------------------|

|                              |                    |
|------------------------------|--------------------|
| <b>EMPLOYEE SIGNATURE:</b>   | <b>ANALYST(S):</b> |
| <b>DATE:</b>                 | <b>DATE:</b>       |
| <b>SUPERVISOR SIGNATURE:</b> |                    |
| <b>DATE:</b>                 |                    |

The principal duties and responsibilities shown are all essential job functions except for those indicated with an asterisk (\*).

THIS POSITION DESCRIPTION SUPERSEDES ALL PRIOR DESCRIPTIONS.

**DODGE COUNTY JOB DESCRIPTION**

**May 2015**

**Wage Range: \$20.51 - \$28.13**

|                     |                             |                     |                           |
|---------------------|-----------------------------|---------------------|---------------------------|
| <b>JOB TITLE:</b>   | Counselor II - AODA         | <b>FLSA STATUS:</b> | Non Exempt                |
| <b>DEPARTMENT:</b>  | Human Services and Health   | <b>REPORTS TO:</b>  | Human Services Supervisor |
| <b>LOCATION:</b>    | Henry Dodge Office Building | <b>DATE:</b>        | August 14, 2000           |
| <b>LABOR GRADE:</b> | Dodge County Six (6)        | <b>REVISED:</b>     | 11/15/10; 3/20/13         |

**OVERALL PURPOSE/SUMMARY**

Under the general direction of Human Services Supervisor, provides and coordinates services through evaluation, treatment, and rehabilitation of clients and their families. Undertakes diagnostic studies, and initiates appropriate treatment using developed skills and methodology. Plans and carries out prevention and rehabilitation treatment program in alcohol and drug day treatment programs as well as individual outpatient counseling sessions.

**PRINCIPAL DUTIES AND RESPONSIBILITIES**

1. Provides alcohol and other drug abuse assessments utilizing standardized formats.
2. Provides individual or group therapy to assigned clients.
3. Provides telephone/TDD crisis intervention services.
4. Provides interventions for family members and significant supports of persons receiving/needing treatment.
5. Provides community outreach to increase awareness of available agency resources.
6. Refers clients for appropriate services based on comprehensive treatment plan or routine intake.
7. Develops and reviews comprehensive treatment plan for clients based on evaluations, diagnosis, and agency guidelines in accordance with State statutes.
8. Functions as member of multi-disciplinary team for case planning and review.
9. Evaluates client's progress, referring for additional evaluation or alternate treatment, if indicated.
10. Arranges for client transportation when client is unable to self-initiate the process, in accordance with agency procedure.
11. Facilitates for clients receiving treatment, financial aid/other assistance, requests for information, completing appropriate forms, writing clinical summaries, and assisting medical records personnel in releasing appropriate records.
12. Advocates on behalf of clients to assure client needs are met appropriately and in timely fashion, through meeting with service providers/administration to explain client needs and to facilitate service delivery.
13. Meets with other community agencies/organizations to assist them in providing relevant programs/services for clients or to develop programs to meet other community needs.
14. Provides education programs to schools, self-help groups, and other community organizations with a primary emphasis on prevention education.
15. Serves as contact person to other treatment agencies or organizations.
16. Gathers and provides to administration such information as may be deemed useful for ongoing program evaluation and planning.
17. Participates in staff trainings as deemed appropriate by supervisor.
18. Maintains required and related paperwork in an accurate and timely manner.
19. Regular attendance and punctuality required.
20. Performs related duties as may be required or assigned.

**JOB SPECIFICATION**

**KNOWLEDGE, SKILLS, AND ABILITIES**

Knowledge of individual/group counseling techniques and theories.  
 Knowledge of pharmacology/psychopharmacology.  
 Knowledge of assessment & treatment planning.  
 Working knowledge of applicable Wisconsin State Administrative Codes, including but not limited to, Chapters 34, 37, 51, 55, and 75.  
 Knowledge of counselor ethics/conduct.  
 Skill in working with chronic alcohol and other drug abuse cases and special populations.  
 Ability to work with chemically dependent individuals/families.  
 Ability to communicate effectively.  
 Must meet requirements of Dodge County Driver Qualification Policy.

**EDUCATION AND EXPERIENCE**

Associate Degree and WI State Substance Abuse Counselor Certification and four (4) years directly related experience and 5 C.E.U.'s, OR, Bachelor's Degree and WI State Substance Abuse Counselor Certification and two (2) years directly related experience and 5 C.E.U.'s.

**WORKING CONDITIONS**

Office and field working environment. Potential to work in adverse interpersonal situations.

**PHYSICAL DEMANDS**

The County of Dodge is an Equal Opportunity Employer. In compliance with the Americans with Disabilities Act, the County will provide reasonable accommodations to qualified individuals with disabilities and encourages both prospective and current employees to discuss potential accommodations with the employer.

|                         |                               |
|-------------------------|-------------------------------|
| <b>ACKNOWLEDGEMENTS</b> | <b>FOR HUMAN RESOURCE USE</b> |
|-------------------------|-------------------------------|

|                              |                    |
|------------------------------|--------------------|
| <b>EMPLOYEE SIGNATURE:</b>   | <b>ANALYST(S):</b> |
| <b>DATE:</b>                 | <b>DATE:</b>       |
| <b>SUPERVISOR SIGNATURE:</b> |                    |
| <b>DATE:</b>                 |                    |

The principal duties and responsibilities shown are all essential job functions except for those indicated with an asterisk (\*).

THIS POSITION DESCRIPTION SUPERSEDES ALL PRIOR DESCRIPTIONS.

**DODGE COUNTY JOB DESCRIPTION**

**May 2015**

**Wage Range: \$22.44 - \$30.77**

|                     |                             |                     |                           |
|---------------------|-----------------------------|---------------------|---------------------------|
| <b>JOB TITLE:</b>   | Counselor III - AODA        | <b>FLSA STATUS:</b> | Non Exempt                |
| <b>DEPARTMENT:</b>  | Human Services and Health   | <b>REPORTS TO:</b>  | Human Services Supervisor |
| <b>LOCATION:</b>    | Henry Dodge Office Building | <b>DATE:</b>        | August 14, 2000           |
| <b>LABOR GRADE:</b> | Dodge County Seven (7)      | <b>REVISED:</b>     | 11/15/10; 3/20/13         |

**OVERALL PURPOSE/SUMMARY**

Under the general direction of Human Services Supervisor, provides and coordinates services through evaluation, treatment, and rehabilitation of clients and their families. Undertakes diagnostic studies, and initiates appropriate treatment using developed skills and methodology. Plans and carries out prevention and rehabilitation treatment program in alcohol and drug day treatment programs as well as individual outpatient counseling sessions.

**PRINCIPAL DUTIES AND RESPONSIBILITIES**

1. Provides alcohol and other drug abuse assessments utilizing standardized formats.
2. Provides individual or group therapy to assigned clients.
3. Provides telephone/TDD crisis intervention services.
4. Provides interventions for family members and significant supports of persons receiving/needing treatment.
5. Provides community outreach to increase awareness of available agency resources.
6. Refers clients for appropriate services based on comprehensive treatment plan or routine intake.
7. Develops and reviews comprehensive treatment plan for clients based on evaluations, diagnosis, and agency guidelines in accordance with State statutes.
8. Functions as member of multi-disciplinary team for case planning and review.
9. Evaluates client's progress, referring for additional evaluation or alternate treatment, if indicated.
10. Arranges for client transportation when client is unable to self-initiate the process, in accordance with agency procedure.
11. Facilitates for clients receiving treatment, financial aid/other assistance, requests for information, completing appropriate forms, writing clinical summaries, or and assisting medical records personnel in releasing appropriate records.
12. Advocates on behalf of clients to assure client needs are met appropriately and in timely fashion, through meeting with service providers/administration to explain client needs and to facilitate service delivery.
13. Meets with other community agencies/organizations to assist them in providing relevant programs/services for clients or to develop programs to meet other community needs.
14. Provides education programs to schools, self-help groups, and other community organizations with a primary emphasis on prevention education.
15. Serves as contact person to other treatment agencies or organizations.
16. Gathers and provides to administration such information as may be deemed useful for ongoing program evaluation and planning.
17. Participates in staff trainings as deemed appropriate by supervisor.
18. Maintains required and related paperwork in an accurate and timely manner.
19. Regular attendance and punctuality required.
20. Performs related duties as may be required or assigned.

**JOB SPECIFICATION**

**KNOWLEDGE, SKILLS, AND ABILITIES**

Knowledge of individual/group counseling techniques and theories.  
 Knowledge of pharmacology/psychopharmacology.  
 Knowledge of assessment & treatment planning.  
 Working knowledge of applicable Wisconsin State Administrative Codes, including but not limited to, Chapters 34, 37, 51, 55, and 75.  
 Knowledge of counselor ethics/conduct.  
 Skill in working with chronic alcohol and other drug abuse cases and special populations.  
 Ability to work with chemically dependent individuals/families.  
 Ability to communicate effectively.  
 Must meet requirements of Dodge County Driver Qualification Policy.

**EDUCATION AND EXPERIENCE**

Associate Degree and WI State Substance Abuse Counselor Certification and seven (7) years directly related experience and ten (10) C.E.U.'s, OR, Bachelor's Degree and WI State Substance Abuse Counselor Certification and five (5) years directly related experience and ten (10) C.E.U.'s.

**WORKING CONDITIONS**

Office and field working environment. Potential to work in adverse interpersonal situations.

**PHYSICAL DEMANDS**

The County of Dodge is an Equal Opportunity Employer. In compliance with the Americans with Disabilities Act, the County will provide reasonable accommodations to qualified individuals with disabilities and encourages both prospective and current employees to discuss potential accommodations with the employer.

|                              |                               |
|------------------------------|-------------------------------|
| <b>ACKNOWLEDGEMENTS</b>      | <b>FOR HUMAN RESOURCE USE</b> |
| <b>EMPLOYEE SIGNATURE:</b>   | <b>ANALYST(S):</b>            |
| <b>DATE:</b>                 | <b>DATE:</b>                  |
| <b>SUPERVISOR SIGNATURE:</b> |                               |
| <b>DATE:</b>                 |                               |

The principal duties and responsibilities shown are all essential job functions except for those indicated with an asterisk (\*).

THIS POSITION DESCRIPTION SUPERSEDES ALL PRIOR DESCRIPTIONS.

RESOLUTION NO. 15-12  
JURISDICTIONAL TRANSFER TO CITY OF WATERTOWN

TO THE HONORABLE BOARD OF SUPERVISORS OF DODGE COUNTY, WISCONSIN

MEMBERS:

WHEREAS, the functional/jurisdictional relationship of present City of Watertown streets and Dodge County highways has been cooperatively reviewed by the City of Watertown and Dodge County; and

WHEREAS, it is recommended by the undersigned Committee that the Dodge County Board of Supervisors transfer the jurisdictional responsibility for CTH R from its intersection with STH 16 Bypass to its intersection with Kimberly Court as described in Exhibit "A" to the City of Watertown; and

WHEREAS, the City of Watertown has agreed to accept jurisdictional responsibility for the above-noted portion of CTH R by resolution of the City Council,

THEREFORE BE IT RESOLVED, that the Dodge County Board of Supervisors hereby transfers jurisdictional responsibility to the City of Watertown for the 0.73 miles of CTH R from its intersection with STH 16 Bypass to its intersection with Kimberly Court in Sections 27 and 34, T.9N., R.15E., City of Watertown, Dodge County, Wisconsin, in accordance with Exhibit "A".

BE IT FURTHER RESOLVED, that upon acceptance of the jurisdictional responsibility of the above-noted portion of CTH R, the name be, and hereby is, changed to North Fourth Street.

All of which is respectfully submitted.

Dated at Juneau, Wisconsin, this 19th day of May, 2015.

  
\_\_\_\_\_  
Harold J. Johnson - Chairman

Vote on Foregoing Resolution


Ayes 27 Noes 4 Absent 2

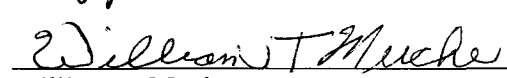
Adopted May 19, 2015  
RESOLUTION

  
\_\_\_\_\_  
KAREN J. GIBSON  
COUNTY CLERK

\_\_\_\_\_  
Chester Caine - Vice Chairman

  
\_\_\_\_\_  
Randy Grebel - Secretary

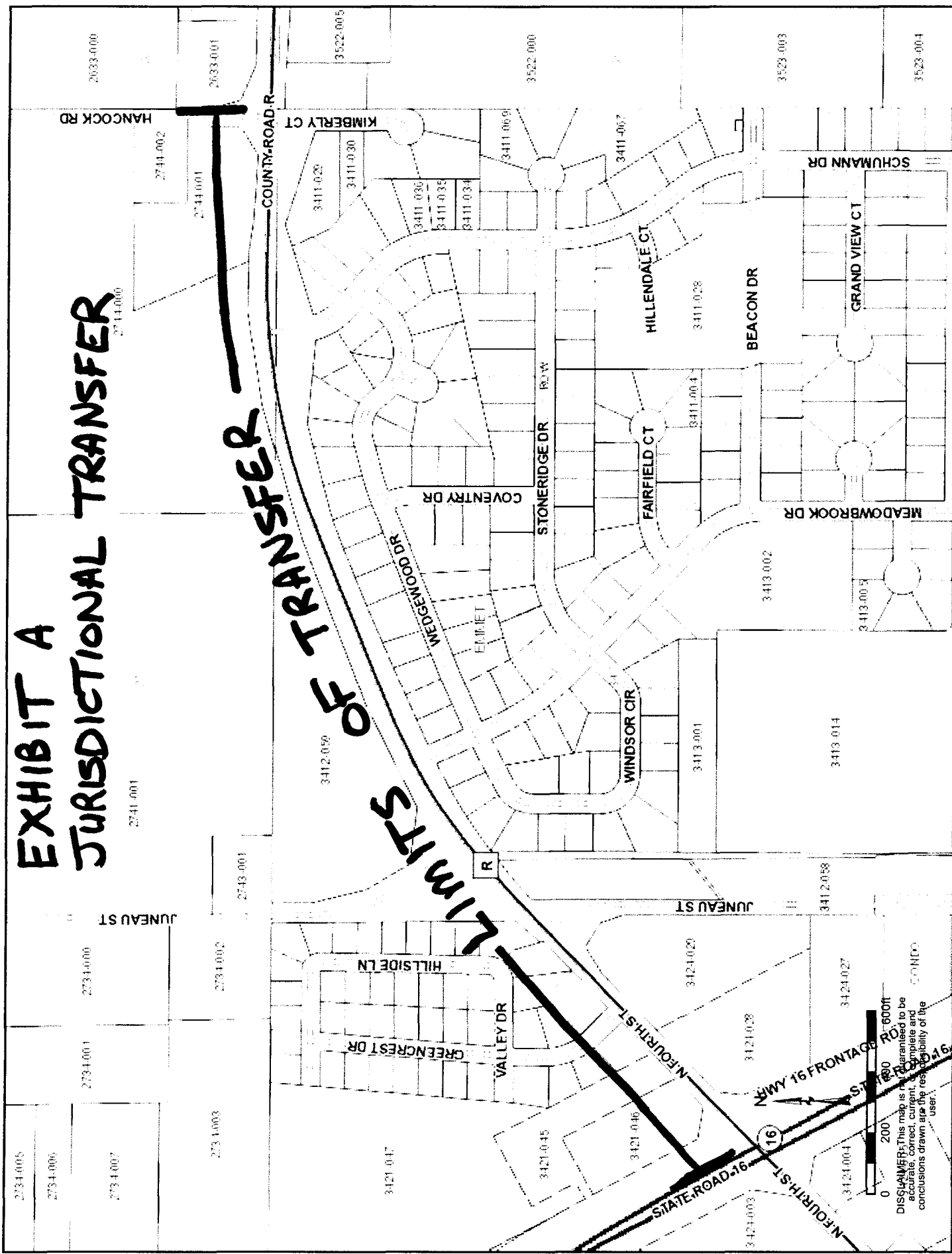
  
\_\_\_\_\_  
Jeff Berks

  
\_\_\_\_\_  
William T. Muche

DODGE COUNTY HIGHWAY  
COMMITTEE

# EXHIBIT A JURISDICTIONAL TRANSFER

## LIMITS OF TRANSFER



0 200 400 600

DISCLAIMER: This map is not guaranteed to be accurate, correct, current, or complete and the user assumes all responsibility of the conclusions drawn are the responsibility of the user.

RESOLUTION NO. 15-13

TO THE HONORABLE BOARD OF SUPERVISORS OF DODGE COUNTY, WISCONSIN MEMBERS,

**WHEREAS**, the Dodge County Highway Committee requests that the Dodge County Board of Supervisors appropriate to the 2015 Highway Department Budget, anticipated revenues in the amount of \$400,000 from the State of Wisconsin Department of Transportation Performance Based Maintenance Program, to Business Unit 3321, STHS Road/Bridge Maintenance; and,

**WHEREAS**, the Highway Committee also requests that the Dodge County Board of Supervisors appropriate to the 2015 Highway Department Budget, expenditures in the amount of \$400,000, to Business Unit 3321, STHS Road/Bridge Maintenance, to be expended in the following general categories in the following estimated amounts: 1) Materials - \$85,000; 2) Labor and Benefits - \$145,000; and, 3) Use of Equipment - \$170,000; and,

**WHEREAS**, in the adopted 2015 Highway Department Budget there are three existing, vacant, unfunded, full-time, benefited positions of Utility II/Truck Driver and two existing, vacant, unfunded, full-time, benefited positions of Equipment Operator; and,

**WHEREAS**, it is the considered opinion of the Highway Committee, the Dodge County Human Resources and Labor Negotiations Committee, and the Dodge County Administrator that two existing, vacant, unfunded, full-time, benefited positions of Utility II/Truck Driver be funded at this time and filled as soon as practicable, to allow for the completion in 2015 of additional road/bridge maintenance work for the State of Wisconsin Department of Transportation; and,

**WHEREAS**, based on a starting date of June 22, 2015, it will cost approximately \$66,000 in 2015 for wages and fringe benefits for these two Utility II/Truck Driver Positions;

**SO, NOW, THEREFORE, BE IT RESOLVED**, that the Dodge County Board of Supervisors hereby authorizes and directs:

1. The Dodge County Finance Director to appropriate to the 2015 Highway Department Budget anticipated revenues in the amount of \$400,000 from the State of Wisconsin Department of Transportation Performance Based Maintenance Program, to Business Unit 3321, STHS Road/Bridge Maintenance;
2. The Dodge County Finance Director to appropriate to the 2015 Highway Department Budget expenditures in the amount of \$400,000, to Business Unit 3321, STHS Road/Bridge Maintenance, to be expended in the following general categories in the following estimated amounts: 1) Materials - \$85,000; 2) Labor and Benefits - \$145,000; and, 3) Use of Equipment - \$170,000; and,
3. The Dodge County Highway Department to fill two existing, vacant, full-time, benefited positions of Utility II/Truck Driver as soon as practicable, to allow for the completion in 2015 of additional road/bridge maintenance work for the State of Wisconsin Department of Transportation; and,

**BE IT FINALLY RESOLVED**, that funds to pay for wages and fringe benefits for these two full-time, benefitted positions of Utility II/Truck Driver in 2015 shall be taken from Business Unit 3321, STHS Road/Bridge Maintenance.

All of which is respectfully submitted this 19th day of May, 2015.

**Dodge County Finance Committee:**

David Frohling  
David Frohling

Gerald Adelmeyer  
Gerald Adelmeyer

Wayne Uttke  
Wayne Uttke

Thomas Schaefer  
Thomas Schaefer

Phillip Gohr  
Phillip Gohr

**ADOPTED  
BY DODGE COUNTY BOARD**

MAY 19 2015

AYES 25 NOES 6  
ABSENT 2  
ABSTAIN 0

Karen J. Gibson  
County Clerk

**FISCAL NOTE:**  
Is the referenced expenditure included in the adopted 2015 Budget? \_\_\_\_\_ Yes or X No

Fiscal Impact on the adopted 2015 Budget:  
\$ 400,000 Revenue & Exp.

Fiscal Impact reviewed by the Dodge County Finance Committee on 5/11, 2015.  
David Frohling  
David Frohling, Chairman  
Dodge County Finance Committee

Vote by Finance Committee Members to Recommend Approval of this Resolution:

David Frohling: X Aye \_\_\_\_\_ No \_\_\_\_\_ Abstain \_\_\_\_\_ Absent from Meeting

Wayne Uttke: \_\_\_\_\_ Aye \_\_\_\_\_ No \_\_\_\_\_ Abstain X Absent from Meeting

Phillip Gohr: X Aye \_\_\_\_\_ No \_\_\_\_\_ Abstain \_\_\_\_\_ Absent from Meeting

Gerald Adelmeyer: X Aye \_\_\_\_\_ No \_\_\_\_\_ Abstain \_\_\_\_\_ Absent from Meeting

Thomas J. Schaefer: X Aye \_\_\_\_\_ No \_\_\_\_\_ Abstain \_\_\_\_\_ Absent from Meeting



RESOLUTION NO. 15-14

TO THE HONORABLE BOARD OF SUPERVISORS OF DODGE COUNTY, WISCONSIN MEMBERS,

**WHEREAS**, Dodge County, Wisconsin (Dodge County), is the owner in fee of real estate located at 401 Madison Street in the City of Beaver Dam, Dodge County, Wisconsin, known as the former MetalFab property; and,

**WHEREAS**, a legal description of the former MetalFab property is Lot 1 of Dodge County Certified Survey Map #6591, as recorded in the Office of the Register of Deeds, in and for Dodge County, Wisconsin, in Volume 44 of Certified Survey Maps, on Pages 306, 307, and 308, as Document No. 1158661, and a copy of Dodge County Certified Survey Map #6591, has been marked for identification as Exhibit "A" and has been attached hereto; and,

**WHEREAS**, the Dodge County Taxation Committee has offered the former MetalFab property for sale to the public by a public online auction on the Wisconsin Surplus Online Auction website, in which all persons were allowed to participate, and in which Dodge County did not establish a minimum bid amount; and,

**WHEREAS**, one of the terms and conditions of the online auction sale of the former MetalFab property is that the sale of the former MetalFab property to the winning bidder is subject to and contingent upon approval by action of the Dodge County Board of Supervisors; and,

**WHEREAS**, one of the terms and conditions of the online auction sale of the former MetalFab property is that any bid may be rejected by Dodge County for any reason; and,

**WHEREAS**, the online auction started on April 17, 2015, and continued thereafter until May 7, 2015, at approximately 11:30 a.m., both inclusive, and Mike Fornetti made the highest bid in the amount of \$56,000; and,

**WHEREAS**, the Taxation Committee recommends that the Dodge County Board of Supervisors authorize and approve the sale of the former MetalFab property by the Taxation Committee on behalf of Dodge County, to Mike Fornetti at a purchase price of \$56,000, and in conformity with the written terms and conditions of auction sale as set forth on the Wisconsin Surplus Online Auction website, and upon the condition that Mike Fornetti shall pay \$59,950 to Wisconsin Surplus Online Auction by not later than 5:00 p.m., on May 27, 2015;

**SO, NOW, THEREFORE, BE IT RESOLVED**, that the Dodge County Board of Supervisors hereby:

1. Authorizes and approves the sale by the Dodge County Taxation Committee, on behalf of Dodge County, Wisconsin (Dodge County), of the former MetalFab property located at 401 Madison Street, in the City of Beaver Dam, Dodge County, Wisconsin, which is described as Lot 1 of Dodge County Certified Survey Map #6591, as recorded in the Office of the Register of Deeds, in and for Dodge County, Wisconsin, in Volume 44 of Certified Survey Maps, on Pages 306, 307, and 308, as Document No. 1158661, a copy of which Dodge County Certified Survey Map #6591, has been marked for identification as

Exhibit "A" and has been attached hereto, to Mike Fornetti of Columbus, Wisconsin, at a purchase price of \$56,000, and in conformity with the written terms and conditions of auction sale as set forth on the Wisconsin Surplus Online Auction website, and upon the condition that Mike Fornetti shall pay \$59,950 to Wisconsin Surplus Online Auction by not later than 5:00 p.m. on May 27, 2015; and,

- 2. Authorizes and directs the Dodge County Clerk to convey the former MetalFab property to Mike Fornetti, of Columbus, Wisconsin, by Quit Claim Deed; and,
- 3. Authorizes and directs the Chairman of the Dodge County Board of Supervisors, the County Clerk, and the Dodge County Corporation Counsel to execute those documents that are necessary to sell the former MetalFab property to Mike Fornetti; and,

**BE IT FINALLY RESOLVED**, that the Dodge County Treasurer shall deposit the proceeds of the auction sale of the former MetalFab property, in the amount of \$56,000, in Business Unit 1446, Metalfab Site Cleanup, Account No. 4831, Land Sales, and these funds in the amount of \$56,000, shall not lapse to the General Fund at the end of the calendar year of 2015.

All of which is respectfully submitted this 19th day of May, 2015.

**Dodge County Taxation Committee:**

Jeff Berres  
Jeff Berres

Dennis Schmidt  
Dennis Schmidt

Ed Nelson  
Ed Nelson

Allen Behl  
Allen Behl

Rodger Mattson

ADOPTED  
BY DODGE COUNTY BOARD

MAY 19 2015

AYES 28 NOES 3  
ABSENT 2  
ABSTAIN 2

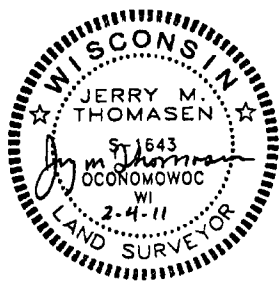
Raren J. Gibson  
County Clerk



DODGE COUNTY  
CERTIFIED SURVEY MAP # 6591

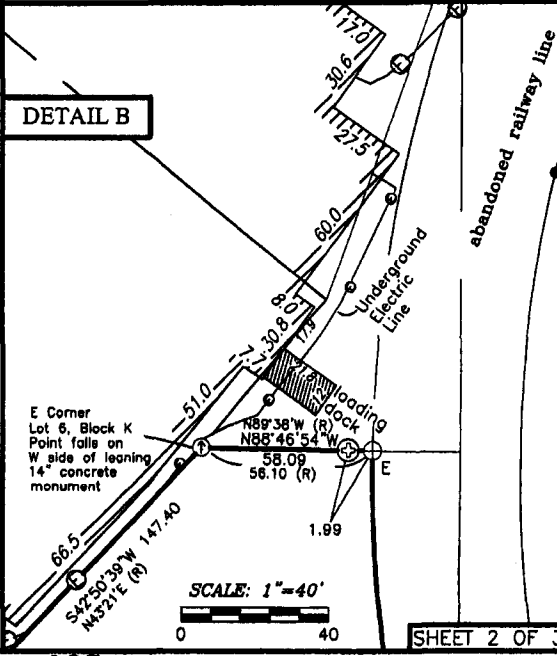
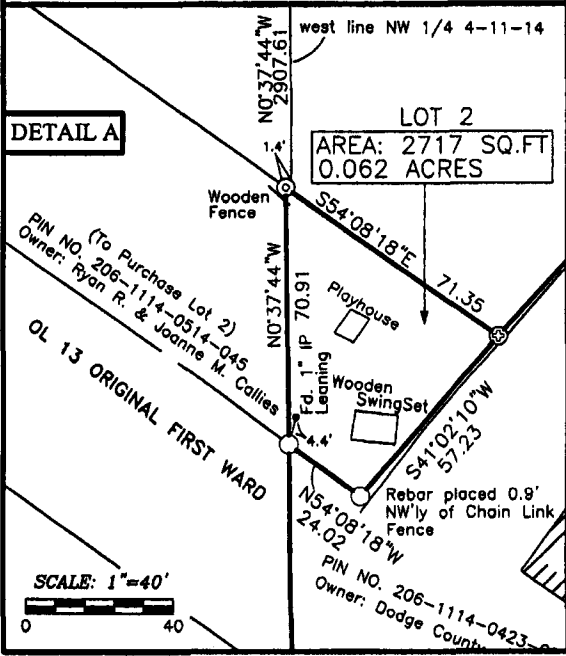
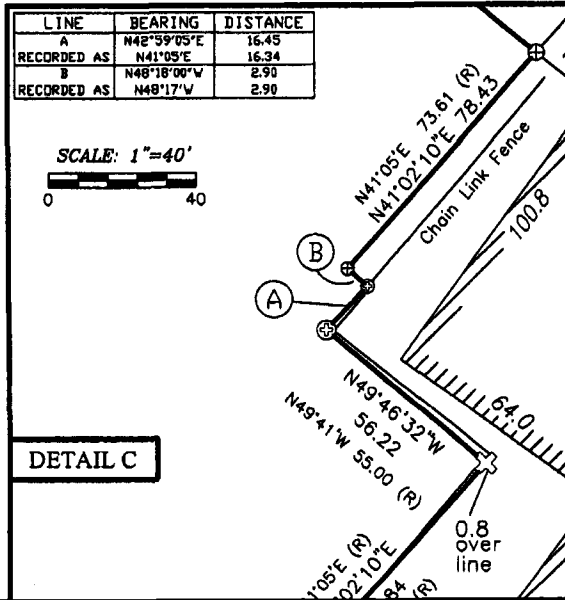
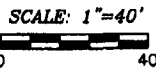
SURVEYOR: JERRY THOMASEN  
127 E. OAK STREET  
JUNEAU, WI 53039

DETAIL SCHEDULE



| LEGEND                             |   |
|------------------------------------|---|
| ●                                  | Iron pipe found                         |
| ⊙                                  | Concrete Monument w/ Iron Pin Fd.       |
| ⊗                                  | Chiseled "X" in Concrete Fd.            |
| ⊕                                  | 6" Diam. Concrete Monument Fd.          |
| ○                                  | 3/4" x 18" Rebar w/ RLS 1643 Cop placed |
| ⊕                                  | 3/4"x24" Rebar found                    |
| (R)                                | Recorded As                             |
| All other monuments found as noted |   |

| LINE        | BEARING     | DISTANCE |
|-------------|-------------|----------|
| A           | N42°59'05"E | 16.45    |
| RECORDED AS | N41°05'E    | 16.34    |
| B           | N48°18'00"W | 2.90     |
| RECORDED AS | N48°17'W    | 2.90     |



v44p307

Exhibit "A"

DODGE COUNTY  
CERTIFIED SURVEY MAP # 6591

Part of Block D, Ordway's Addition and Blocks G & H and part of Block K, Smith & Ordways Addition, located in the SW 1/4 of the NW 1/4 and the NW 1/4 of the SW 1/4 of Section 4 and the SE 1/4 of the NE 1/4 of Section 5, T.11N.-R.14E., City of Beaver Dam, Dodge County, Wisconsin, more particularly described as:

Beginning at a found limestone monument at the W 1/4 corner of Section 4, T.11N. R.14E.;

Thence N0°37'44"W, 199.52' along the west line of lot 6, block K of Smith & Ordways Addition;

Thence S54°08'18"E, 71.35';

Thence N41°02'10"E, 127.84';

Thence N49°46'32"W, 56.22';

Thence N42°59'05"E, 16.45';

Thence N48°18'00"W, 2.90';

Thence N41°02'10"E, 78.43' to the northeasterly line of lot 6, block K of Smith & Ordways Addition;

Thence N49°46'32"W, 164.89' along the said northeasterly line of lot 6 to the north corner of said lot 6, block K of Smith & Ordways Addition (being also the west corner of lot 6, block D of Ordway's Addition) and the southeasterly right of way line of Madison Street;

Thence N41°02'10"E, 82.20' along the said southeasterly line of Madison Street;

Thence S49°46'32"E, 164.96' to the southeasterly line of lot 5, block D of Ordway's Addition;

Thence N41°07'42"E, 115.28' along the said southeasterly line of lot 5 and lot 4 to the east corner of lot 4, block D of Ordway's Addition;

Thence N49°40'41"W, 165.14' along the northeasterly line of said lot 4 to the said southeasterly right of way line of Madison Street;

Thence N41°02'10"E, 116.35' along the said southeasterly line of Madison Street to the southerly line of W Mill Street;

Thence S89°38'22"E, 517.69' along the said southerly line of W Mill Street to the westerly line of First Street;

Thence S0°19'30"E, 699.23' along the said westerly line of First Street to the northerly line of W South Street;

Thence S89°39'38"W, 325.52' along the said northerly line of W South Street to the westerly railway line of the abandoned Chicago, Milwaukee, St. Paul & Pacific Railroad;

Thence northerly 217.65' along the arc of a curve to the right being the said abandoned westerly railway line, which chord bears N11°33'01"W, 215.95', with a radius of 502.00' to the south line of lot 3, block K of Smith & Ordways Addition;

Thence N88°46'54"W, 58.09' along the said south line of lot 3 to the east corner of lot 6, block K of Smith & Ordways Addition;

Thence S42°50'39"W, 147.40';

Thence S06°01'50"W, 106.58' to the said northerly line of W South Street;

Thence S89°39'38"W, 220.90' along the said northerly line of W South Street to the place of beginning.

Said parcel contains 418,426 sq. ft., or 9.606 ac., more or less.

This is a resurvey of the Metalfab property surveyed by Anthony Thousand [1958], Richard Herbst [1970], and Eugene Ultech [1987].

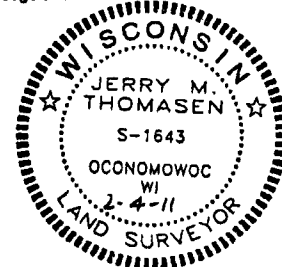
I, JERRY M. THOMASEN, Wisconsin Registered Land Surveyor, do hereby certify that by the order of John Corey, Corporation Counsel for Dodge County, I have resurveyed, monumented and mapped the following: Part of Block D, Ordway's Addition and Blocks G & H and part of Block K, Smith & Ordways Addition, City of Beaver Dam, Dodge County, Wisconsin.

I further certify that I have surveyed the above described property and that the above map is a true representation thereof and shows the size and location of the property, its exterior boundaries, the location of all visible structures, fences and roadways and that I have complied with the provisions of Chapter 236.34 of the Wisconsin State Statutes and the Subdivision Control Ordinance of the City of Beaver Dam in surveying and mapping the same to the best of my knowledge and belief.

Jerry M. Thomassen  
Jerry M. Thomassen  
Dodge County Senior Surveyor  
127 E Oak Street  
Juneau, Wisconsin 53039

Approved by the City of Beaver Dam this 8th day of FEBRUARY 2011.

John R. Somers  
City Clerk - John Somers



V44P308

RESOLUTION NO. 15-15

TO THE HONORABLE BOARD OF SUPERVISORS OF DODGE COUNTY, WISCONSIN MEMBERS:

**WHEREAS**, on May 6, 2015, James E. Mielke, Dodge County Administrator, appointed Andrew W. Miller to the full-time, benefited position of *Veterans Service Officer*, effective May 31, 2015, at Step 1 of Labor Grade 10 of the Dodge County Compensation Plan at a beginning annual salary equivalent to \$28.21 per hour, and, in addition, fringe benefits as approved by the Dodge County Human Resources and Labor Negotiations Committee; and,

**WHEREAS**, James E. Mielke and the two undersigned members of the Dodge County Veterans Service Commission request the Dodge County Board of Supervisors to confirm this appointment;

**SO, NOW, THEREFORE, BE IT RESOLVED**, that the Dodge County Board of Supervisors hereby confirms the appointment of Andrew W. Miller to the full-time, benefited position of *Veterans Service Officer*, effective May 31, 2015, at Step 1 of Labor Grade 10 of the Dodge County Compensation Plan at a beginning annual salary equivalent to \$28.21 per hour, and, in addition, fringe benefits as approved by the Dodge County Human Resources and Labor Negotiations Committee.

All of which is respectfully submitted this 19th day of May, 2015.

**Dodge County Veterans Service Commission:**

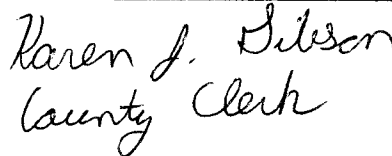
  
\_\_\_\_\_  
Chester Caine

  
\_\_\_\_\_  
Dennis Johnson

ADOPTED  
BY DODGE COUNTY BOARD

MAY 19 2015

AYES 30 NOES 1  
ABSENT 0  
ABSTAIN 0

  
Karen J. Silson  
County Clerk

REPORT 1

TO THE HONORABLE DODGE COUNTY BOARD OF SUPERVISORS

We, the Dodge County Planning, Development and Parks Committee, hereby report favorably on the petition of Oechsner Farms LLC requesting amendment of the Land Use Code, Dodge County, Wisconsin, to rezone approximately 57.7-acres of land from an A-2 General Agricultural Zoning District to an A-1 Prime Agricultural Zoning District in part of the NE ¼, SE ¼, and part of the SE ¼, SE ¼, Section 2, Town of Leroy, in order to qualify the land for the farmland preservation program and recommend adoption of the attached ordinance.

The committee has reviewed and considered the facts presented in the application and received at the public hearing and finds that the criteria listed in Section 2.3.4.1 of the Dodge County Land Use Code can be met for this proposal. The committee finds that the proposal is consistent with the Dodge County Future Land Use Map and the stated purposes of the Dodge County Land Use Code. The committee finds that the proposal will not result in significant adverse impacts upon the surrounding properties or the natural environment and further finds that the land proposed for rezoning is suitable for development and will not cause unreasonable soil erosion or have an unreasonable adverse effect on rare or irreplaceable natural areas. The committee finds that the proposal will not be used to legitimize or spot zone a nonconforming use or structure and finds that the rezoning is the minimum action necessary to accomplish the intent of the petition.

Respectfully submitted this 20<sup>th</sup> day of April, 2015.

ADOPTED  
BY DODGE COUNTY BOARD

MAY 19 2015

AYES 29 NOES 2  
ABSENT 0  
ABSTAIN 0

*Karen J. Gibson*  
County Clerk

*Tom Schaefer*  
Tom Schaefer

*Allen Behl*  
Allen Behl

*Randy Grebel*  
Randy Grebel

*Joseph Marsik*  
Joseph Marsik

Janice Bobholz

Planning, Development and Parks Committee

Ordinance No. 942

An Ordinance amending the Land Use Code, Dodge County, Wisconsin by placing certain lands in Section 2, T13N, R16E, Town of Leroy, in the A-1 Prime Agricultural zoning district.

Whereas the subject matter of this Ordinance has been duly referred to and considered by the Dodge County Planning, Development and Parks Committee and a public hearing having been held, after the giving of requisite notice of said hearing and a recommendation thereon having been reported to the Board of Supervisors, Dodge County, Wisconsin as required by section 59.69 of the Wisconsin Statutes.

Whereas the Dodge County Planning, Development and Parks Committee has reviewed and considered the facts presented in the application and received at the public hearing relating to the subject matter of this Ordinance for compliance with the criteria listed in Section 2.3.4.1 of the Dodge County Land Use Code.

Whereas the Dodge County Planning, Development and Parks Committee has found that the criteria listed in Section 2.3.4.1 of the Dodge County Land Use Code can be met for this proposal and has further found that the proposal is consistent with the Dodge County Future Land Use Map and the stated purposes of the Dodge County Land Use Code. Furthermore, this Committee has found that the proposal will not result in significant adverse impacts upon the surrounding properties or the natural environment, that the land proposed for rezoning is suitable for development and will not have an unreasonable effect on rare or irreplaceable natural resources, that the proposal will not be used to legitimize or spot zone a nonconforming use or structure and that the rezoning is the minimum action necessary to accomplish the intent of the petition.

The County Board of Supervisors of the County of Dodge does ordain as follows:

Section 1. The "official zoning map" adopted with the Land Use Code, Dodge County, Wisconsin on March 21, 2000 is hereby amended as shown on the map attached hereto and made part of this Ordinance.

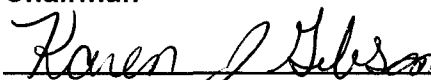
Section 2. This Ordinance shall be effective upon enactment and publication.

Section 3. All ordinances or parts of ordinances inconsistent with or in contradiction of the provisions of this Ordinance are hereby repealed.

Adopted and Approved this 19<sup>th</sup> day of May, 2015.



Russell Kottke  
Chairman

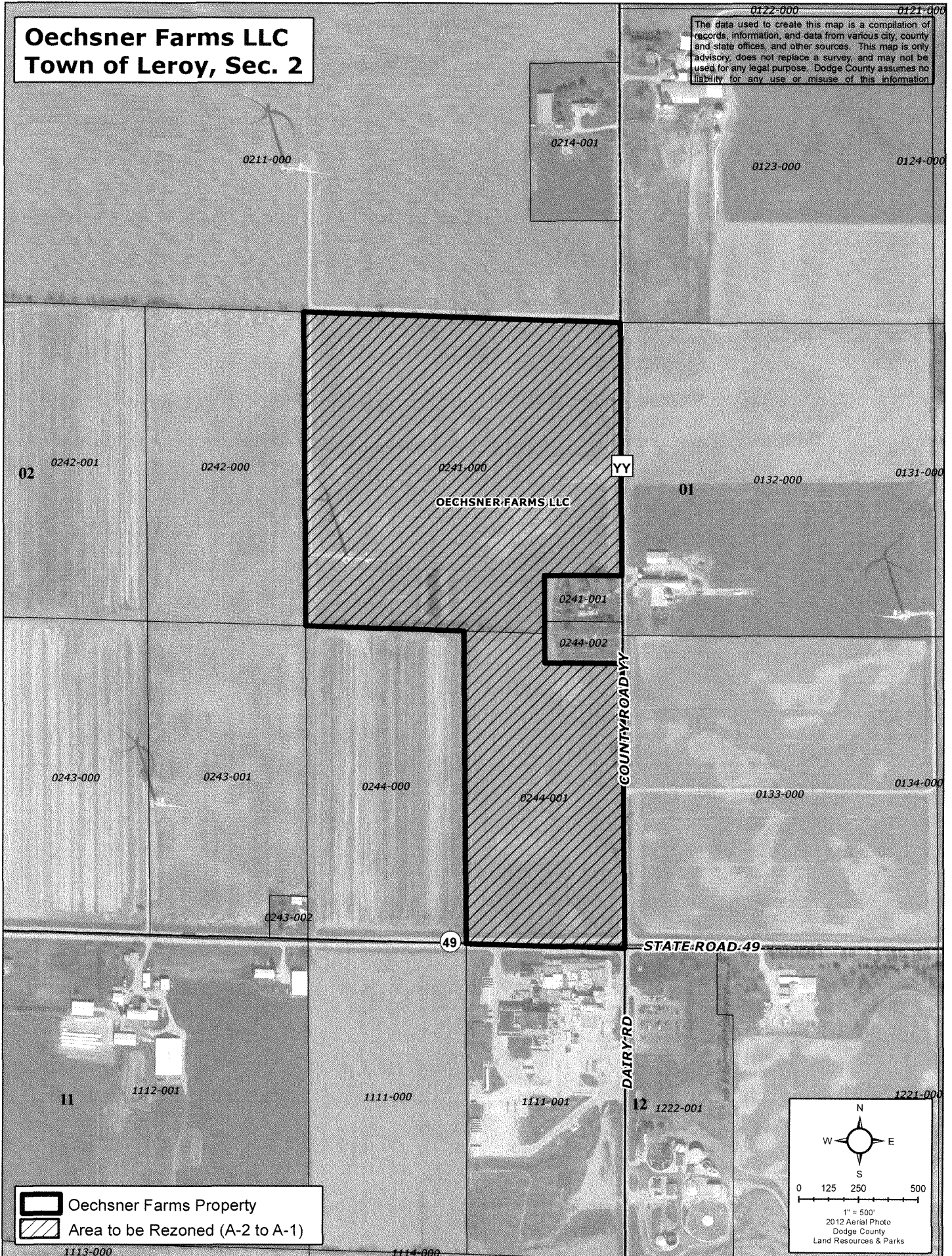



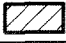
Karen J. Gibson  
County Clerk



**Oechsner Farms LLC  
Town of Leroy, Sec. 2**

The data used to create this map is a compilation of records, information, and data from various city, county and state offices, and other sources. This map is only advisory, does not replace a survey, and may not be used for any legal purpose. Dodge County assumes no liability for any use or misuse of this information.



 Oechsner Farms Property  
 Area to be Rezoned (A-2 to A-1)

0 125 250 500  
1" = 500'  
2012 Aerial Photo  
Dodge County  
Land Resources & Parks

REPORT 2

TO THE HONORABLE DODGE COUNTY BOARD OF SUPERVISORS

We, the Dodge County Planning, Development and Parks Committee, hereby report favorably on the petition of Dodge County Land Resources and Parks Department to approve an updated Comprehensive Plan for Dodge County. The proposed *Dodge County Comprehensive Plan* (Exhibit A) will replace the existing *Dodge County Year 2030 Comprehensive Plan* as the official County Comprehensive Plan document. The updated Plan includes multiple changes to the Comprehensive Plan Text and Future Land Use Map, as well as one change to the Farmland Preservation Plan Map. The Farmland Preservation Plan was adopted as an Appendix to the Comprehensive Plan as required by state statute. These proposed amendments are necessary in order to maintain consistency with updated town comprehensive plan future land use maps and to comply with a state statute that requires the County to update the Comprehensive Plan no less than once every 10 years. The current *Dodge County Year 2030 Comprehensive Plan* was adopted by the Dodge County Board of Supervisors on March 21, 2006.

The Committee finds that the proposed Comprehensive Plan update is necessary to comply with a state statute that requires Dodge County to update the Comprehensive Plan no less than once every 10 years and to maintain consistency with updated town comprehensive plan future land use maps.

Respectfully submitted this 19th day of May, 2015.

ADOPTED  
BY DODGE COUNTY BOARD

MAY 19 2015

AYES 30 NOES 1  
ABSENT 2  
ABSTAIN 0

*Karen J. Gibson*  
County Clerk

*Thomas J. Schaefer*  
Thomas J. Schaefer

*Joseph Marsik*  
Joseph Marsik

*Allen Behl*  
Allen Behl

*Randy Grebel*  
Randy Grebel

*Janice K. Bobholz*  
Janice Bobholz

Planning, Development and Parks  
Committee

Ordinance No. 943

AN ORDINANCE TO ADOPT THE DODGE COUNTY  
COMPREHENSIVE PLAN

THE COUNTY BOARD OF SUPERVISORS OF THE COUNTY OF DODGE DOES ORDAIN  
AS FOLLOWS:

SECTION 1. Pursuant to section 59.69(3), Wisconsin Statutes, Dodge County has adopted a comprehensive plan as defined in sections 66.1001(1)(a) and 66.1001(2), Wisconsin Statutes.

SECTION 2. The Dodge County Board of Supervisors has adopted written procedures designed to foster public participation in every stage of an update to a comprehensive plan as required by section 66.1001(4)(a), Wisconsin Statutes.

SECTION 3. The Dodge County Planning, Development and Parks Committee, by a majority vote of the entire Committee recorded in its official minutes dated April 20, 2015, has adopted a resolution recommending to the County Board the adoption of the document entitled "*Dodge County Comprehensive Plan*" containing all of the elements specified in section 66.1001(2), Wisconsin Statutes.

SECTION 4. Dodge County has provided opportunities for public involvement in accordance with the public participation strategy adopted by the County Board including a public hearing held April 20, 2015, in compliance with the requirements of Section 66.1001(4), Wisconsin Statutes.

SECTION 5. The Dodge County Board of Supervisors, by the enactment of this ordinance, formally adopts the attached document entitled, "*Dodge County Comprehensive Plan*" pursuant to Section 66.1001(4)(c), Wisconsin Statutes.

SECTION 6. This ordinance shall take effect upon passage by a majority vote of the members-elect of the Dodge County Board of Supervisors and publication/posting as required by law.

ADOPTED this 19th day of May, 2015.

Voting Aye: 30 Voting Nay: 1 Abstain: 0 Absent: 2

Russell Kotthe  
County Board Chairman

Attest:  
Raven J. Olson  
County Clerk

ORDINANCE NO. 944

AN ORDINANCE AMENDING CHAPTER 9 – PEACE AND ORDER, OF THE CODE OF ORDINANCES, DODGE COUNTY, WISCONSIN, TO AMEND SECTION 9.01 – OFFENSES AGAINST STATE LAWS SUBJECT TO FORFEITURE, AND AMENDING CHAPTER 30 – CONSTRUCTION AND EFFECT OF ORDINANCES, OF THE CODE OF ORDINANCES, DODGE COUNTY, WISCONSIN, TO AMEND SECTION 30.04(4)(b), SCHEDULE OF DEPOSITS, TO SET FORTH A DEPOSIT SCHEDULE.

**WHEREAS**, pursuant to Section 59.54(6), of the *Wisconsin Statutes*, the Dodge County Board of Supervisors may enact and enforce ordinances to preserve the public peace and good order within the County and provide a forfeiture for a violation of the ordinances; and,

**WHEREAS**, pursuant to Section 59.54(22), of the *Wisconsin Statutes*, the Dodge County Board of Supervisors may enact and enforce ordinances, and provide forfeitures for violations of those ordinances, that prohibit conduct which is the same as or similar to conduct prohibited by chs. 941 to 948; and,

**WHEREAS**, pursuant to Section 59.54(25g), of the *Wisconsin Statutes*, the Dodge County Board of Supervisors may enact and enforce an ordinance to prohibit the possession of any synthetic cannabinoid, and provide a forfeiture for a violation of the ordinance; and,

**WHEREAS**, pursuant to Section 101.123(4m), of the *Wisconsin Statutes*, the Dodge County Board of Supervisors may enact ordinances, in compliance with Section 101.123, of the *Wisconsin Statutes*, that protect the health and comfort of the public; and,

**WHEREAS**, pursuant to Section 134.405(6)(a) and Section 134.405(6)(b), of the *Wisconsin Statutes*, the Dodge County Board of Supervisors may enact ordinances governing the sale or purchase of scrap metal or the sale of bulk plastic merchandise containers to scrap plastic dealers if the ordinance is not more stringent than Section 134.405, of the *Wisconsin Statutes*, and that requires scrap dealers to submit reports of all purchase of all nonferrous scrap, metal articles, and proprietary articles to a law enforcement officer in an electronic format; and,

**WHEREAS**, pursuant to Section 134.71(14), of the *Wisconsin Statutes*, the Dodge County Board of Supervisors may enact an ordinance governing pawn brokers, secondhand article dealers, or secondhand jewelry dealers if that ordinance is at least as stringent as Section 134.71 of the *Wisconsin Statutes*; and,

**WHEREAS**, pursuant to Section 254.92(4), of the *Wisconsin Statutes*, the Dodge County Board of Supervisors may enact an ordinance regulating the purchase or possession of cigarettes, nicotine products, and tobacco products by persons under the age of 18 if the ordinance strictly conforms to Section 254.92, of the *Wisconsin Statutes*; and,

**WHEREAS**, Section 30.04(1), of the Code of Ordinances, Dodge County, Wisconsin, requires a forfeiture for a conviction for a violation of any of the ordinances; and,

**WHEREAS**, Section 30.04(4)(b), of the Code of Ordinances, Dodge County, Wisconsin, sets forth the schedule of deposits required for various ordinance violations, including ordinances with a statutory counterpart; and,

**WHEREAS**, a deposit must be created for a violation of the Code of Ordinances, Dodge County, Wisconsin, for inclusion in Section 30.04(4)(b), of the Code of Ordinances, Dodge County, Wisconsin;

**SO NOW, THEREFORE,**

THE COUNTY BOARD OF SUPERVISORS OF THE COUNTY OF DODGE DOES ORDAIN AS FOLLOWS:

Section 1. Section 9.01 of the Code of Ordinances, Dodge County, Wisconsin, is hereby amended to read as follows\*:

**9.01 OFFENSES AGAINST STATE LAWS SUBJECT TO FORFEITURE.** (Am. #560; #629; #868)

The statutes enumerated below and following the prefix "9" defining offenses against the peace and good order of the State are adopted by reference and made a part of this chapter as if fully set forth in this section, to define offenses against the peace and good order of the County. However, the penalty for commission of such offenses shall be limited to a forfeiture imposed under § 30.04 of this Code of Ordinances.

|                               |   |
|-------------------------------|---|
| <del>9.938.983</del>          | <del>Possession of tobacco by minors</del>  |
| <b><u>9.101.123</u></b>       | <b><u>Illegal smoking in county</u></b>   |
| 9.125.07(1)                   | Procuring alcohol for underage person   |
| 9.125.07(2)                   | Sale of alcohol beverages to intoxicated persons  |
| 9.125.07(3)                   | Permitting underage person on licensed premises   |
| 9.125.07(4)                   | Underage person procuring alcohol beverages; entering licensed premises; falsely representing age |
| 9.125.085(3)                  | Falsification of proof of age   |
| 9.125.09(2)                   | Possession of alcohol beverages on school grounds   |
| 9.125.32(3)                   | Closing hours, fermented malt beverages   |
| 9.125.68(4)                   | Closing hours, intoxicating liquor  |
| <b><u>9.134.405(4)(c)</u></b> | <b><u>Scrap Dealer – Electronic report</u></b>  |
| 9.134.66                      | Distribution of tobacco to minors   |
| <b><u>9.134.71(8)(a)</u></b>  | <b><u>Pawn Broker - Identification</u></b>  |
| <b><u>9.134.71(8)(b)</u></b>  | <b><u>Pawn Broker – Transactions with minors</u></b>  |
| <b><u>9.134.71(8)(c)</u></b>  | <b><u>Pawn Broker - Records</u></b>   |
| <b><u>9.134.71(8)(d)</u></b>  | <b><u>Pawn Broker – Holding period</u></b>  |
| <b><u>9.134.71(8)(e)</u></b>  | <b><u>Pawn Broker – Law enforcement agency</u></b>  |
| 9.167.10                      | Regulation of fireworks   |

|                              |  |
|------------------------------|--|
| 9.167.31                     | Safe use and transportation of firearms and bows   |
| 9.172.01                     | Permitting certain livestock to run at large   |
| 9.172.015                    | Livestock on highway   |
| 9.174.042                    | Dogs running at large; untagged dogs   |
| 9.174.07                     | Failure to license dog   |
| <b><u>9.254.92(1)</u></b>    | <b><u>Cigarette, Nicotine Product, Tobacco Product – Minor falsely represent age</u></b>         |
| <b><u>9.254.92(2)</u></b>    | <b><u>Cigarette, Nicotine Product, Tobacco Product – Minor purchased/attempt to purchase</u></b> |
| <b><u>9.254.92(2m)</u></b>   | <b><u>Cigarette, Nicotine Product, Tobacco Product – Purchase for minor</u></b>                  |
| <b><u>9.256.35(10)</u></b>   | <b><u>Misuse of emergency service number</u></b>   |
| <b><u>9.941.01</u></b>       | <b><u>Negligent operation of vehicle</u></b>   |
| <b><u>9.941.10</u></b>       | <b><u>Negligent handling of burning materials</u></b>  |
| <b><u>9.941.13</u></b>       | <b><u>False alarms</u></b>   |
| 9.941.20                     | Endangering safety by use of a dangerous weapon  |
| 9.941.23                     | Carrying a concealed weapon  |
| 9.941.235                    | Carrying a firearm in a public building  |
| 9.941.237                    | Carrying a handgun where alcohol beverages may be sold and consumed                              |
| 9.941.24                     | Possession of switchblade knife  |
| <b><u>9.941.299</u></b>      | <b><u>Intentional use of laser pointer on correctional or law enforcement officer</u></b>        |
| <b><u>9.941.37</u></b>       | <b><u>Obstruction of rescue or emergency personnel</u></b>                                       |
| <b><u>9.942.08(2)(a)</u></b> | <b><u>Invasion of Privacy – Surveillance device</u></b>  |
| <b><u>9.942.08(2)(b)</u></b> | <b><u>Invasion of Privacy – Sexual viewing</u></b>   |
| <b><u>9.942.08(2)(c)</u></b> | <b><u>Invasion of Privacy – Attempted sexual viewing</u></b>                                     |
| <b><u>9.942.08(2)(d)</u></b> | <b><u>Invasion of Privacy – Private dwelling</u></b>   |
| 9.943.01(1)                  | Damage to property   |
| 9.943.017                    | Graffiti   |
| 9.943.13                     | Trespass to land   |
| 9.943.14                     | Trespass to dwelling   |
| 9.943.15                     | Trespass to locked building, construction site   |
| 9.943.20                     | Theft  |
| 9.943.21                     | Fraud on an innkeeper  |
| 9.943.24                     | Issuance of worthless check  |
| <b><u>9.943.34</u></b>       | <b><u>Receiving Stolen Property: Value not to exceed \$2,500</u></b>                             |
| 9.943.50                     | Retail theft   |
| <b><u>9.943.70(2)</u></b>    | <b><u>Offenses against computer data and programs</u></b>  |
| <b><u>9.943.70(3)</u></b>    | <b><u>Offenses against computers, computer equipment or supplies</u></b>                         |
| <b><u>9.944.17</u></b>       | <b><u>Sexual gratification</u></b>   |
| <b><u>9.944.20</u></b>       | <b><u>Lewd and lascivious behavior</u></b>   |
| <b><u>9.944.25(2)</u></b>    | <b><u>Sending obscene/sexually explicit electronic messages</u></b>                              |
| <b><u>9.944.30(1m)</u></b>   | <b><u>Prostitution</u></b>   |
| <b><u>9.946.32(2)</u></b>    | <b><u>False Swearing: False statement under oath</u></b>   |
| 9.946.40                     | Refusing to aid officer  |
| 9.946.41                     | Resisting/obstructing officer  |
| <b><u>9.946.46</u></b>       | <b><u>Encouraging violation of probation, extended supervision, or parole</u></b>                |

|                                |   |
|--------------------------------|---|
| <b><u>9.946.73</u></b>         | <b><u>Violate rule of state or county institution</u></b>   |
| <b><u>9.946.93</u></b>         | <b><u>Public Assistance Fraud: Not to exceed \$2,000</u></b>  |
| 9.947.01                       | Disorderly conduct  |
| 9.947.012                      | Telephone harassment  |
| 9.947.0125                     | Unlawful use of computerized communication system   |
| 9.947.013                      | Harassment  |
| 9.947.06                       | Failure to disperse   |
| 9.948.40                       | Contributing to the delinquency of a minor  |
| 9.948.45                       | Contributing to truancy   |
| 9.951.2                        | Mistreating animals   |
| 9.951.3                        | Dognapping and catnapping   |
| 9.951.13                       | Providing proper food and drink to confined animals   |
| 9.951.14                       | Providing proper shelter to animals   |
| 9.961.41(3g)                   | Possess or attempt to possess marijuana (25 grams or less)  |
| <b><u>9.961.41(3g)(em)</u></b> | <b><u>Possession or attempt to possess synthetic cannabinoids</u></b>                                       |
| <b><u>9.961.41(4)(bm)</u></b>  | <b><u>Delivery of imitation controlled substance</u></b>  |
| 9.961.573(1)                   | Possession of drug paraphernalia  |
| 9.961.573(2)                   | Possession of drug paraphernalia by a person under 17 years of age  |
| 9.961.574(2)                   | Manufacture or delivery of drug paraphernalia – <u>under 17 yrs.</u>  |
| <b><u>9.961.575(2)</u></b>     | <b><u>Delivery of drug paraphernalia by person 17 yrs or older to a minor – 17 yrs of age or under.</u></b> |
| 9.961.575(2)                   | Delivery of drug paraphernalia to a minor   |
| <b><u>9.06</u></b>             | <b><u>Smoking</u></b>   |

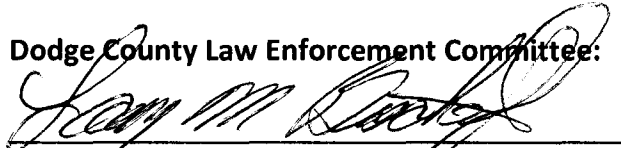
Section 2. Section 30.04(4)(b), of the Code of Ordinances, Dodge County, Wisconsin, is hereby amended as shown in the attached Schedule "A", which is hereby adopted by reference as part of this ordinance, for violations of Chapter 9 of the Code of Ordinances, Dodge County, Wisconsin.


Section 3. This Ordinance shall be in full force and effect upon enactment and publication as required by law.


Section 4. All ordinances or parts of ordinances inconsistent with or in contradiction of the provisions of this Ordinance are hereby repealed.


Respectfully submitted this 19<sup>th</sup> of May, 2015.

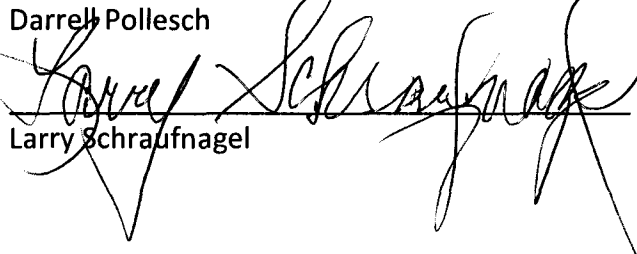
Dodge County Law Enforcement Committee:

  
Larry Bischoff

  
Lisa Derr

  
MaryAnn Miller

  
Darrell Pollesch

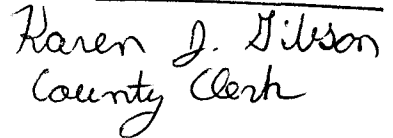
  
Larry Schraufnagel


Enacted and approved this 19<sup>th</sup> day of May, 2015.

ADOPTED  
BY DODGE COUNTY BOARD

MAY 19 2015

AYES 29 NOES 2  
ABSENT 2  
ABSTAIN 0

  
Karen J. Gibson  
County Clerk

  
Russell Kottke, Chairman

Dodge County Board of Supervisors

  
Karen J. Gibson, County Clerk



SCHEDULE "A"\*\*\*

| Ordinance       | Offense  | Deposit       | Court Costs  | Pendly Sur-charge 26% | Jail Sur-charge | Crime Lab and Drug | Court Support | Justice Info. | Total Cash Deposit |
|-----------------|--|---------------|--------------|-----------------------|-----------------|--------------------|---------------|---------------|--------------------|
| 9.101.123       | <u>Illegal smoking in county</u>   | <u>100.00</u> | <u>25.00</u> | <u>26.00</u>          | <u>10.00</u>    | <u>13.00</u>       | <u>68.00</u>  | <u>21.50</u>  | <u>263.50</u>      |
| 9.125.07(4)(b)  | Underage drinking violations-possesses or consumes-under 18 yrs.                     |               |              |                       |                 |                    |               |               |                    |
|                 | 1st violation  | 30.00         | 25.00        | 7.80                  | 10.00           | 13.00              | 68.00         | 21.50         | 175.30             |
|                 | 2nd violation within 1 yr.   | 60.00         | 25.00        | 15.60                 | 10.00           | 13.00              | 68.00         | 21.50         | 213.10             |
|                 | 3rd and subsequent violations within 1 yr.   | 100.00        | 25.00        | 26.00                 | 10.00           | 13.00              | 68.00         | 21.50         | 263.50             |
| 9.125.07(4)(b)  | Underage drinking violations-possesses or consumes- 18—20 yrs.                       |               |              |                       |                 |                    |               |               |                    |
|                 | 1st violation  | 100.00        | 25.00        | 26.00                 | 10.00           | 13.00              | 68.00         | 21.50         | 263.50             |
|                 | 2nd violation within 1 yr.   | 200.00        | 25.00        | 52.00                 | 10.00           | 13.00              | 68.00         | 21.50         | 389.50             |
|                 | 3rd violation within 1 yr.   | 300.00        | 25.00        | 78.00                 | 10.00           | 13.00              | 68.00         | 21.50         | 515.50             |
|                 | 4th and subsequent violations within 1 yr.   | 500.00        | 25.00        | 130.00                | 10.00           | 13.00              | 68.00         | 21.50         | 767.50             |
| 9.125.085(3)(a) | Makes, provides, alters, duplicates ID card or other document for an underage person | 200.00        | 25.00        | 52.00                 | 10.00           | 13.00              | 68.00         | 21.50         | 389.50             |
| 9.125.085(3)(b) | Identification card violations-under 18 yrs.   |               |              |                       |                 |                    |               |               |                    |
|                 | 1st violation  | 200.00        | 25.00        | 52.00                 | 10.00           | 13.00              | 68.00         | 21.50         | 389.50             |
|                 | 2nd violation within 1 yr.   | 300.00        | 25.00        | 78.00                 | 10.00           | 13.00              | 68.00         | 21.50         | 515.50             |
|                 | 3rd and subsequent violations within 1 yr.   | 500.00        | 25.00        | 130.00                | 10.00           | 13.00              | 68.00         | 21.50         | 767.50             |
| 9.125.085(3)(b) | Identification card violations-18—20 yrs.  | 100.00        | 25.00        | 26.00                 | 10.00           | 13.00              | 68.00         | 21.50         | 263.50             |
| 9.125.09(2)     | School-related possession of alcohol beverages, under 21 yrs.                        |               |              |                       |                 |                    |               |               |                    |
|                 | 1st violation  | 100.00        | 25.00        | 26.00                 | 10.00           | 13.00              | 68.00         | 21.50         | 263.50             |
|                 | 2nd violation within 1 yr.   | 200.00        | 25.00        | 52.00                 | 10.00           | 13.00              | 68.00         | 21.50         | 389.50             |
|                 | 3rd violation within 1 yr.   | 300.00        | 25.00        | 78.00                 | 10.00           | 13.00              | 68.00         | 21.50         | 515.50             |
|                 | 4th and subsequent violation within 1 yr.  | 500.00        | 25.00        | 130.00                | 10.00           | 13.00              | 68.00         | 21.50         | 767.50             |
| 9.125.09(2)     | School-related possession of alcohol beverages, 21 yrs. or older                     | 100.00        | 25.00        | 26.00                 | 10.00           | 13.00              | 68.00         | 21.50         | 263.50             |
| 9.125.32(3)     | Closing hours, fermented malt beverage   | 150.00        | 25.00        | 39.00                 | 10.00           | 13.00              | 68.00         | 21.50         | 326.50             |
| 9.125.68(4)     | Closing hours  | 150.00        | 25.00        | 39.00                 | 10.00           | 13.00              | 68.00         | 21.50         | 326.50             |

\*\*\* Additions in text are indicated by underline and **bold-faced type**; deletions by ~~single-strikethrough~~.\*\*\*

NOTE: THIS IS A PARTIAL PRINT OUT OF THE ORDINANCE DEPOSIT SCHEDULE, 944 WHICH ONLY REFLECTS CHANGES MADE TO CHAPTER 9 AS AMENDED BY ORDINANCE NO. \_\_\_\_\_

SCHEDULE "A"\*\*\*

| Ordinance              | Offense   | Deposit       | Court Costs  | Penalty Sur-charge 26% | Jail Sur-charge | Crime Lab and Drug | Court Support | Justice Info. | Total Cash Deposit |
|------------------------|---|---------------|--------------|------------------------|-----------------|--------------------|---------------|---------------|--------------------|
| <u>9.134.405(4)(c)</u> | <u>Scrap Dealer – Electronic report</u>                                       | <u>50.00</u>  | <u>25.00</u> | <u>13.00</u>           | <u>10.00</u>    | <u>13.00</u>       | <u>68.00</u>  | <u>21.50</u>  | <u>200.50</u>      |
| 9.134.66               | Distribution of tobacco to minors   | 100.00        | 25.00        | 26.00                  | 10.00           | 13.00              | 68.00         | 21.50         | 263.50             |
|                        | 2nd violation within 1 yr.  | 200.00        | 25.00        | 52.00                  | 10.00           | 13.00              | 68.00         | 21.50         | 389.50             |
| <u>9.134.71(8)</u>     | <u>Pawn Broker and Secondhand Article/Jewelry Dealer Requirements</u>         | <u>50.00</u>  | <u>25.00</u> | <u>13.00</u>           | <u>10.00</u>    | <u>13.00</u>       | <u>68.00</u>  | <u>21.50</u>  | <u>200.50</u>      |
|                        | <u>2<sup>nd</sup> violation within 1 yr.</u>                                  | <u>100.00</u> | <u>25.00</u> | <u>26.00</u>           | <u>10.00</u>    | <u>13.00</u>       | <u>68.00</u>  | <u>21.50</u>  | <u>263.50</u>      |
|                        | <u>3<sup>rd</sup> violation within 1 yr.</u>                                  | <u>200.00</u> | <u>25.00</u> | <u>52.00</u>           | <u>10.00</u>    | <u>13.00</u>       | <u>68.00</u>  | <u>21.50</u>  | <u>389.50</u>      |
| <u>9.134.71(8)(a)</u>  | <u>Pawn Broker – Identification</u>   | <u>50.00</u>  | <u>25.00</u> | <u>13.00</u>           | <u>10.00</u>    | <u>13.00</u>       | <u>68.00</u>  | <u>21.50</u>  | <u>200.50</u>      |
|                        | <u>2<sup>nd</sup> violation within 1 yr.</u>                                  | <u>100.00</u> | <u>25.00</u> | <u>26.00</u>           | <u>10.00</u>    | <u>13.00</u>       | <u>68.00</u>  | <u>21.50</u>  | <u>263.50</u>      |
|                        | <u>3<sup>rd</sup> violation within 1 yr.</u>                                  | <u>200.00</u> | <u>25.00</u> | <u>52.00</u>           | <u>10.00</u>    | <u>13.00</u>       | <u>68.00</u>  | <u>21.50</u>  | <u>389.50</u>      |
| <u>9.134.71(8)(b)</u>  | <u>Pawn Broker – Transactions with minors</u>                                 | <u>50.00</u>  | <u>25.00</u> | <u>13.00</u>           | <u>10.00</u>    | <u>13.00</u>       | <u>68.00</u>  | <u>21.50</u>  | <u>200.50</u>      |
|                        | <u>2<sup>nd</sup> violation within 1 yr.</u>                                  | <u>100.00</u> | <u>25.00</u> | <u>26.00</u>           | <u>10.00</u>    | <u>13.00</u>       | <u>68.00</u>  | <u>21.50</u>  | <u>263.50</u>      |
|                        | <u>3<sup>rd</sup> violation within 1 yr.</u>                                  | <u>200.00</u> | <u>25.00</u> | <u>52.00</u>           | <u>10.00</u>    | <u>13.00</u>       | <u>68.00</u>  | <u>21.50</u>  | <u>389.50</u>      |
| <u>9.134.71(8)(c)</u>  | <u>Pawn Broker – Records</u>  | <u>50.00</u>  | <u>25.00</u> | <u>13.00</u>           | <u>10.00</u>    | <u>13.00</u>       | <u>68.00</u>  | <u>21.50</u>  | <u>200.50</u>      |
|                        | <u>2<sup>nd</sup> violation within 1 yr.</u>                                  | <u>100.00</u> | <u>25.00</u> | <u>26.00</u>           | <u>10.00</u>    | <u>13.00</u>       | <u>68.00</u>  | <u>21.50</u>  | <u>263.50</u>      |
|                        | <u>3<sup>rd</sup> violation within 1 yr.</u>                                  | <u>200.00</u> | <u>25.00</u> | <u>52.00</u>           | <u>10.00</u>    | <u>13.00</u>       | <u>68.00</u>  | <u>21.50</u>  | <u>389.50</u>      |
| <u>9.134.71(8)(d)</u>  | <u>Pawn Broker – Holding period</u>   | <u>50.00</u>  | <u>25.00</u> | <u>13.00</u>           | <u>10.00</u>    | <u>13.00</u>       | <u>68.00</u>  | <u>21.50</u>  | <u>200.50</u>      |
|                        | <u>2<sup>nd</sup> violation within 1 yr.</u>                                  | <u>100.00</u> | <u>25.00</u> | <u>26.00</u>           | <u>10.00</u>    | <u>13.00</u>       | <u>68.00</u>  | <u>21.50</u>  | <u>263.50</u>      |
|                        | <u>3<sup>rd</sup> violation within 1 yr.</u>                                  | <u>200.00</u> | <u>25.00</u> | <u>52.00</u>           | <u>10.00</u>    | <u>13.00</u>       | <u>68.00</u>  | <u>21.50</u>  | <u>389.50</u>      |
| <u>9.134.71(8)(e)</u>  | <u>Pawn Broker – Law enforcement agency</u>                                   | <u>50.00</u>  | <u>25.00</u> | <u>13.00</u>           | <u>10.00</u>    | <u>13.00</u>       | <u>68.00</u>  | <u>21.50</u>  | <u>200.50</u>      |
|                        | <u>2<sup>nd</sup> violation within 1 yr.</u>                                  | <u>100.00</u> | <u>25.00</u> | <u>26.00</u>           | <u>10.00</u>    | <u>13.00</u>       | <u>68.00</u>  | <u>21.50</u>  | <u>263.50</u>      |
|                        | <u>3<sup>rd</sup> violation within 1 yr.</u>                                  | <u>200.00</u> | <u>25.00</u> | <u>52.00</u>           | <u>10.00</u>    | <u>13.00</u>       | <u>68.00</u>  | <u>21.50</u>  | <u>389.50</u>      |
| 9.167.10               | Regulation of fireworks   | 200.00        | 25.00        | 52.00                  | 10.00           | 13.00              | 68.00         | 21.50         | 389.50             |
| 9.167.31(2)(b)         | Place, possess or transport a loaded firearm or strung bow in or on a vehicle | 60.00         | 25.00        | 15.60                  | 10.00           | 13.00              | 68.00         | 21.50         | 213.10             |

\*\*\*Additions in text are indicated by underline and **bold-faced type**; deletions by ~~single strikethrough~~.\*\*\*

SCHEDULE "A"\*

|                     |   |               |              |              |              |              |              |              |               |
|---------------------|---|---------------|--------------|--------------|--------------|--------------|--------------|--------------|---------------|
| 9.167.31(2)(b)      | Place, possess or transport an uncased firearm, bow or crossbow in or on a vehicle  | 40.00         | 25.00        | 10.40        | 10.00        | 13.00        | 68.00        | 21.50        | 187.90        |
| 9.167.31(2)(c)      | Load or discharge a firearm or shoot a bolt or an arrow from a bow or crossbow in or from vehicle   | 60.00         | 25.00        | 15.60        | 10.00        | 13.00        | 68.00        | 21.50        | 213.10        |
| 9.167.31(2)(d)      | Discharge a firearm or shoot a bolt or an arrow from a bow or crossbow from or across a highway or within 50 [ft.] of the center of a roadway | 40.00         | 25.00        | 10.40        | 10.00        | 13.00        | 68.00        | 21.50        | 187.90        |
| 9.172.01            | Permitting certain livestock to run at large  | 50.00         | 25.00        | 13.00        | 10.00        | 13.00        | 68.00        | 21.50        | 200.50        |
|                     | <u>2<sup>nd</sup> Violation in yr.</u>  | <u>100.00</u> | <u>25.00</u> | <u>26.00</u> | <u>10.00</u> | <u>13.00</u> | <u>68.00</u> | <u>21.50</u> | <u>263.50</u> |
|                     | <u>3<sup>rd</sup> Violation in yr.</u>  | <u>200.00</u> | <u>25.00</u> | <u>52.00</u> | <u>10.00</u> | <u>13.00</u> | <u>68.00</u> | <u>21.50</u> | <u>389.50</u> |
| 9.172.015           | Livestock on highway  | 50.00         | 25.00        | 13.00        | 10.00        | 13.00        | 68.00        | 21.50        | 200.50        |
|                     | <u>2<sup>nd</sup> Violation in yr.</u>  | <u>100.00</u> | <u>25.00</u> | <u>26.00</u> | <u>10.00</u> | <u>13.00</u> | <u>68.00</u> | <u>21.50</u> | <u>263.50</u> |
|                     | <u>3<sup>rd</sup> Violation in yr.</u>  | <u>200.00</u> | <u>25.00</u> | <u>52.00</u> | <u>10.00</u> | <u>13.00</u> | <u>68.00</u> | <u>21.50</u> | <u>389.50</u> |
| 9.174.042           | Dogs running at large; untagged dogs  | 30.00         | 25.00        | 7.80         | 10.00        | 13.00        | 68.00        | 21.50        | 175.30        |
|                     | 2nd violation   | 60.00         | 25.00        | 15.60        | 10.00        | 13.00        | 68.00        | 21.50        | 213.10        |
| 9.174.07            | Failure to license dog  | 30.00         | 25.00        | 7.80         | 10.00        | 13.00        | 68.00        | 21.50        | 175.30        |
| <u>9.254.92(1)</u>  | <u>Cigarette, Nicotine Product, Tobacco Product - Minor falsely represent age</u>   | <u>10.00</u>  | <u>25.00</u> | <u>2.60</u>  | <u>10.00</u> | <u>13.00</u> | <u>68.00</u> | <u>21.50</u> | <u>150.10</u> |
| <u>9.254.92(2)</u>  | <u>Cigarette, Nicotine Product, Tobacco Product - Minor purchased/attempt to purchase</u>   | <u>10.00</u>  | <u>25.00</u> | <u>2.60</u>  | <u>10.00</u> | <u>13.00</u> | <u>68.00</u> | <u>21.50</u> | <u>150.10</u> |
| <u>9.254.92(2m)</u> | <u>Cigarette, Nicotine Product, Tobacco Product - Purchase for minor</u>  | <u>10.00</u>  | <u>25.00</u> | <u>2.60</u>  | <u>10.00</u> | <u>13.00</u> | <u>68.00</u> | <u>21.50</u> | <u>150.10</u> |
| <u>9.256.35(10)</u> | <u>Misuse of emergency service number</u>   | <u>300.00</u> | <u>25.00</u> | <u>78.00</u> | <u>10.00</u> | <u>13.00</u> | <u>68.00</u> | <u>21.50</u> | <u>515.50</u> |
| 9.938.983           | Possess, buy, attempt to buy or falsely represent one's age to receive any cigarette or tobacco product                                       | 10.00         | 25.00        | 2.60         | 10.00        | 13.00        | 68.00        | 21.50        | 150.10        |
| <u>9.941.01</u>     | <u>Negligent operation of vehicle</u>   | <u>150.00</u> | <u>25.00</u> | <u>39.00</u> | <u>10.00</u> | <u>13.00</u> | <u>68.00</u> | <u>21.50</u> | <u>326.50</u> |
| <u>9.941.10</u>     | <u>Negligent handling of burning materials</u>  | <u>200.00</u> | <u>25.00</u> | <u>52.00</u> | <u>10.00</u> | <u>13.00</u> | <u>68.00</u> | <u>21.50</u> | <u>389.50</u> |
| <u>9.941.13</u>     | <u>False alarms</u>   | <u>300.00</u> | <u>25.00</u> | <u>78.00</u> | <u>10.00</u> | <u>13.00</u> | <u>68.00</u> | <u>21.50</u> | <u>515.50</u> |
| 9.941.20(1)         | Endangering safety by use of weapons  | 500.00        | 25.00        | 130.00       | 10.00        | 13.00        | 68.00        | 21.50        | 767.50        |
| 9.941.23            | Carrying a concealed weapon   | 500.00        | 25.00        | 130.00       | 10.00        | 13.00        | 68.00        | 21.50        | 767.50        |

\*\*\* Additions in text are indicated by underline and **bold-faced type**; deletions by ~~single strikethrough~~.\*\*\*

NOTE: THIS IS A PARTIAL PRINT OUT OF THE ORDINANCE DEPOSIT SCHEDULE, 944 WHICH ONLY REFLECTS CHANGES MADE TO CHAPTER 9 AS AMENDED BY ORDINANCE NO. \_\_\_\_\_

SCHEDULE "A"\*\*\*

| Ordinance             | Offense  | Deposit         | Court Costs  | Penalty Sur-charge 26% | Jail Sur-charge | Crime Lab and Drug | Court Support | Justice Info. | Total Cash Deposit |
|-----------------------|--|-----------------|--------------|------------------------|-----------------|--------------------|---------------|---------------|--------------------|
| 9.941.235             | Carrying unauthorized firearm in public building                                   | <u>1,000.00</u> | 25.00        | <u>260.00</u>          | 10.00           | 13.00              | 68.00         | 21.50         | <u>1,397.50</u>    |
| 9.941.237             | Carrying a handgun where alcohol may be served                                     | 500.00          | 25.00        | 130.00                 | 10.00           | 13.00              | 68.00         | 21.50         | 767.50             |
| 9.941.24              | Possession of switch blade knife   | 500.00          | 25.00        | 130.00                 | 10.00           | 13.00              | 68.00         | 21.50         | 767.50             |
| <u>9.941.299</u>      | <u>Intentional use of laser pointer on correctional or law enforcement officer</u> | <u>250.00</u>   | <u>25.00</u> | <u>65.00</u>           | <u>10.00</u>    | <u>13.00</u>       | <u>68.00</u>  | <u>21.50</u>  | <u>452.50</u>      |
| <u>9.941.37</u>       | <u>Obstruction of rescue or emergency personnel</u>                                | <u>250.00</u>   | <u>25.00</u> | <u>65.00</u>           | <u>10.00</u>    | <u>13.00</u>       | <u>68.00</u>  | <u>21.50</u>  | <u>452.50</u>      |
| <u>9.942.08(2)(a)</u> | <u>Invasion of Privacy – Surveillance device</u>                                   | <u>500.00</u>   | <u>25.00</u> | <u>130.00</u>          | <u>10.00</u>    | <u>13.00</u>       | <u>68.00</u>  | <u>21.50</u>  | <u>767.50</u>      |
| <u>9.942.08(2)(b)</u> | <u>Invasion of Privacy – Sexual viewing</u>  | <u>500.00</u>   | <u>25.00</u> | <u>130.00</u>          | <u>10.00</u>    | <u>13.00</u>       | <u>68.00</u>  | <u>21.50</u>  | <u>767.50</u>      |
| <u>9.942.08(2)(c)</u> | <u>Invasion of Privacy – Attempted sexual viewing</u>                              | <u>500.00</u>   | <u>25.00</u> | <u>130.00</u>          | <u>10.00</u>    | <u>13.00</u>       | <u>68.00</u>  | <u>21.50</u>  | <u>767.50</u>      |
| <u>9.942.08(2)(d)</u> | <u>Invasion of Privacy – Private dwelling</u>                                      | <u>500.00</u>   | <u>25.00</u> | <u>130.00</u>          | <u>10.00</u>    | <u>13.00</u>       | <u>68.00</u>  | <u>21.50</u>  | <u>767.50</u>      |
| 9.943.01(1)           | Criminal damage to property  | 200.00          | 25.00        | 52.00                  | 10.00           | 13.00              | 68.00         | 21.50         | 389.50             |
| 9.943.017             | Graffiti   | 500.00          | 25.00        | 130.00                 | 10.00           | 13.00              | 68.00         | 21.50         | 767.50             |
| 9.943.13              | Trespass to land   | 100.00          | 25.00        | 26.00                  | 10.00           | 13.00              | 68.00         | 21.50         | 263.50             |
| 9.943.14              | Criminal trespass to dwelling  | 200.00          | 25.00        | 52.00                  | 10.00           | 13.00              | 68.00         | 21.50         | 389.50             |
| 9.943.145             | Criminal trespass to a medical facility  | 200.00          | 25.00        | 52.00                  | 10.00           | 13.00              | 68.00         | 21.50         | 389.50             |
| 9.943.15              | Entry onto construction site or locked building                                    | 350.00          | 25.00        | 91.00                  | 10.00           | 13.00              | 68.00         | 21.50         | 578.50             |
| 9.943.20(3)(a)        | Petty theft  | 200.00          | 25.00        | 52.00                  | 10.00           | 13.00              | 68.00         | 21.50         | 389.50             |
| 9.943.21              | Fraud on innkeeper   | 250.00          | 25.00        | 65.00                  | 10.00           | 13.00              | 68.00         | 21.50         | 452.50             |
| 9.943.24              | Issue worthless check  | 200.00          | 25.00        | 52.00                  | 10.00           | 13.00              | 68.00         | 21.50         | 389.50             |
| <u>9.943.34</u>       | <u>Receiving Stolen Property: Value not to exceed \$2,500</u>                      | <u>200.00</u>   | <u>25.00</u> | <u>52.00</u>           | <u>10.00</u>    | <u>13.00</u>       | <u>68.00</u>  | <u>21.50</u>  | <u>389.50</u>      |
| 9.943.50              | Retail theft   | 200.00          | 25.00        | 52.00                  | 10.00           | 13.00              | 68.00         | 21.50         | 389.50             |
| <u>9.943.34</u>       | <u>Receiving Stolen Property: Value not to exceed \$2,500</u>                      | <u>200.00</u>   | <u>25.00</u> | <u>52.00</u>           | <u>10.00</u>    | <u>13.00</u>       | <u>68.00</u>  | <u>21.50</u>  | <u>389.50</u>      |

\*\*\* Additions in text are indicated by underline and **bold-faced type**; deletions by ~~single strikethrough~~.\*\*\*

NOTE: THIS IS A PARTIAL PRINT OUT OF THE ORDINANCE DEPOSIT SCHEDULE, 944 WHICH ONLY REFLECTS CHANGES MADE TO CHAPTER 9 AS AMENDED BY ORDINANCE NO. \_\_\_\_\_

SCHEDULE "A"

| Ordinance           | Offense  | Deposit       | Court Costs  | Penalty Sur-charge 26% | Jail Sur-charge | Crime Lab and Drug | Court Support | Justice Info. | Total Cash Deposit |
|---------------------|--|---------------|--------------|------------------------|-----------------|--------------------|---------------|---------------|--------------------|
| <u>9.943.70(2)</u>  | <u>Crimes against computer data and programs</u>                           | <u>500.00</u> | <u>25.00</u> | <u>130.00</u>          | <u>10.00</u>    | <u>13.00</u>       | <u>68.00</u>  | <u>21.50</u>  | <u>767.50</u>      |
| <u>9.943.70(3)</u>  | <u>Crimes against computers, computer equipment or supplies</u>            | <u>500.00</u> | <u>25.00</u> | <u>130.00</u>          | <u>10.00</u>    | <u>13.00</u>       | <u>68.00</u>  | <u>21.50</u>  | <u>767.50</u>      |
| <u>9.944.17</u>     | <u>Sexual gratification</u>  | <u>200.00</u> | <u>25.00</u> | <u>52.00</u>           | <u>10.00</u>    | <u>13.00</u>       | <u>68.00</u>  | <u>21.50</u>  | <u>389.50</u>      |
| <u>9.944.20</u>     | <u>Lewd and lascivious behavior</u>  | <u>250.00</u> | <u>25.00</u> | <u>65.00</u>           | <u>10.00</u>    | <u>13.00</u>       | <u>68.00</u>  | <u>21.50</u>  | <u>452.50</u>      |
| <u>9.944.25(2)</u>  | <u>Sending obscene/sexually explicit electronic messages</u>               | <u>200.00</u> | <u>25.00</u> | <u>52.00</u>           | <u>10.00</u>    | <u>13.00</u>       | <u>68.00</u>  | <u>21.50</u>  | <u>389.50</u>      |
| <u>9.944.30(1m)</u> | <u>Prostitution</u>  | <u>500.00</u> | <u>25.00</u> | <u>130.00</u>          | <u>10.00</u>    | <u>13.00</u>       | <u>68.00</u>  | <u>21.50</u>  | <u>767.50</u>      |
| <u>9.946.32(2)</u>  | <u>False Swearing: False statement under oath</u>                          | <u>250.00</u> | <u>25.00</u> | <u>65.00</u>           | <u>10.00</u>    | <u>13.00</u>       | <u>68.00</u>  | <u>21.50</u>  | <u>452.50</u>      |
| 9.946.40            | Refusing to aid officer  | 350.00        | 25.00        | 91.00                  | 10.00           | 13.00              | 68.00         | 21.50         | 578.50             |
| 9.946.41            | Resisting or obstructing officer   | 300.00        | 25.00        | 78.00                  | 10.00           | 13.00              | 68.00         | 21.50         | 515.50             |
| <u>9.946.46</u>     | <u>Encouraging violation of probation, extended supervision, or parole</u> | <u>500.00</u> | <u>25.00</u> | <u>130.00</u>          | <u>10.00</u>    | <u>13.00</u>       | <u>68.00</u>  | <u>21.50</u>  | <u>767.50</u>      |
| <u>9.946.73</u>     | <u>Violate rule of state or county institution</u>                         | <u>500.00</u> | <u>25.00</u> | <u>130.00</u>          | <u>10.00</u>    | <u>13.00</u>       | <u>68.00</u>  | <u>21.50</u>  | <u>767.50</u>      |
| <u>9.946.93</u>     | <u>Public Assistance Fraud: Not to exceed \$2,000</u>                      | <u>500.00</u> | <u>25.00</u> | <u>130.00</u>          | <u>10.00</u>    | <u>13.00</u>       | <u>68.00</u>  | <u>21.50</u>  | <u>767.50</u>      |
| 9.947.01            | Disorderly conduct   | 150.00        | 25.00        | 39.00                  | 10.00           | 13.00              | 68.00         | 21.50         | 326.50             |
| 9.947.012           | Telephone harassment   | <u>250.00</u> | 25.00        | <u>65.00</u>           | 10.00           | 13.00              | 68.00         | 21.50         | <u>452.50</u>      |
| 9.947.0125          | Unlawful use of computerized communication                                 | 250.00        | 25.00        | 65.00                  | 10.00           | 13.00              | 68.00         | 21.50         | 452.50             |
| 9.947.013           | Harassment   | 200.00        | 25.00        | 52.00                  | 10.00           | 13.00              | 68.00         | 21.50         | 389.50             |
| 9.947.06(3-5)       | Unlawful assembly  | 250.00        | 25.00        | 65.00                  | 10.00           | 13.00              | 68.00         | 21.50         | 452.50             |
| 9.948.40            | Intentionally contributing to the delinquency                              | 250.00        | 25.00        | 65.00                  | 10.00           | 13.00              | 68.00         | 21.50         | 452.50             |
| 9.948.45            | Contributing to truancy  | 100.00        | 25.00        | 26.00                  | 10.00           | 13.00              | 68.00         | 21.50         | 263.50             |
| 9.951.02            | Mistreating animals  | 250.00        | 25.00        | 65.00                  | 10.00           | 13.00              | 68.00         | 21.50         | 452.50             |
| 9.951.03            | Dognapping and catnapping  | 250.00        | 25.00        | 65.00                  | 10.00           | 13.00              | 68.00         | 21.50         | 452.50             |

\*\*\*Additions in text are indicated by underline and **bold-faced type**; deletions by ~~single strike through~~\*\*\*

NOTE: THIS IS A PARTIAL PRINT OUT OF THE ORDINANCE DEPOSIT SCHEDULE, 944 WHICH ONLY REFLECTS CHANGES MADE TO CHAPTER 9 AS AMENDED BY ORDINANCE NO. \_\_\_\_\_

SCHEDULE "A"\*\*\*

| Ordinance               | Offense  | Deposit       | Court Costs  | Penalty Sur-charge 26% | Jail Sur-charge | Crime Lab and Drug | Court Support | Justice Info. | Total Cash Deposit |
|-------------------------|--|---------------|--------------|------------------------|-----------------|--------------------|---------------|---------------|--------------------|
| 9.951.13                | Providing proper food and drink to confined animals            | 250.00        | 25.00        | 65.00                  | 10.00           | 13.00              | 68.00         | 21.50         | 452.50             |
| 9.951.14                | Providing proper shelter to animals                            | 250.00        | 25.00        | 65.00                  | 10.00           | 13.00              | 68.00         | 21.50         | 452.50             |
| 9.961.41(3g)            | Possess or attempt to possess marijuana                        | <u>500.00</u> | 25.00        | <u>130.00</u>          | 10.00           | 13.00              | 68.00         | 21.50         | <u>767.50</u>      |
| <u>9.961.41(3g)(em)</u> | <u>Possession or attempt to possess synthetic cannabinoids</u> | <u>500.00</u> | <u>25.00</u> | <u>130.00</u>          | <u>10.00</u>    | <u>13.00</u>       | <u>68.00</u>  | <u>21.50</u>  | <u>767.50</u>      |
| <u>9.961.41(4)(bm)</u>  | <u>Delivery of imitation controlled substance</u>              | <u>500.00</u> | <u>25.00</u> | <u>130.00</u>          | <u>10.00</u>    | <u>13.00</u>       | <u>68.00</u>  | <u>21.50</u>  | <u>767.50</u>      |
| 9.961.573(1)            | Possession of drug paraphernalia                               | 100.00        | 25.00        | 26.00                  | 10.00           | 13.00              | 68.00         | 21.50         | 263.50             |
| 9.961.573(2)            | Possession of drug paraphernalia-under 17 yrs.                 |               |              |                        |                 |                    |               |               |                    |
|                         | 1st violation  | 25.00         | 25.00        | 6.50                   | 10.00           | 13.00              | 68.00         | 21.50         | 169.00             |
|                         | 2nd violation within 1 yr.                                     | 50.00         | 25.00        | 13.00                  | 10.00           | 13.00              | 68.00         | 21.50         | 200.50             |
|                         | 3rd and subsequent violations                                  | 100.00        | 25.00        | 26.00                  | 10.00           | 13.00              | 68.00         | 21.50         | 263.50             |
| 9.961.574(2)            | Manufacture/delivery of drug paraphernalia-under 17 yrs.       |               |              |                        |                 |                    |               |               |                    |
|                         | 1st violation  | 25.00         | 25.00        | 6.50                   | 10.00           | 13.00              | 68.00         | 21.50         | 169.00             |
|                         | 2nd violation within 1 yr.                                     | 50.00         | 25.00        | 13.00                  | 10.00           | 13.00              | 68.00         | 21.50         | 200.50             |
|                         | 3rd and subsequent violations                                  | 100.00        | 25.00        | 26.00                  | 10.00           | 13.00              | 68.00         | 21.50         | 263.50             |
| <u>9.961.575(2)</u>     | <u>Delivery of drug paraphernalia to a minor-under 17 yrs.</u> | <u>25.00</u>  | <u>25.00</u> | <u>6.50</u>            | <u>10.00</u>    | <u>13.00</u>       | <u>68.00</u>  | <u>21.50</u>  | <u>169.00</u>      |
|                         | <u>2nd violation within 1 yr.</u>                              | <u>50.00</u>  | <u>25.00</u> | <u>13.00</u>           | <u>10.00</u>    | <u>13.00</u>       | <u>68.00</u>  | <u>21.50</u>  | <u>200.50</u>      |
|                         | <u>3rd and subsequent violations</u>                           | <u>100.00</u> | <u>25.00</u> | <u>26.00</u>           | <u>10.00</u>    | <u>13.00</u>       | <u>68.00</u>  | <u>21.50</u>  | <u>263.50</u>      |
| 9.02                    | Littering  | 50.00         | 25.00        | 13.00                  | 10.00           | 13.00              | 68.00         | 21.50         | 200.50             |
| 9.03                    | Loitering  | 50.00         | 25.00        | 13.00                  | 10.00           | 13.00              | 68.00         | 21.50         | 200.50             |
| 9.05                    | Equal Opportunity Housing                                      | 100.00        | 25.00        | 26.00                  | 10.00           | 13.00              | 68.00         | 21.50         | 263.50             |
| <u>9.06</u>             | <u>Smoking</u>   | <u>10.00</u>  | <u>25.00</u> | <u>2.60</u>            | <u>10.00</u>    | <u>13.00</u>       | <u>68.00</u>  | <u>21.50</u>  | <u>150.10</u>      |

\*\*\* Additions in text are indicated by underline and **bold-faced type**; deletions by ~~single-strikethrough~~.\*\*\*

NOTE: THIS IS A PARTIAL PRINT OUT OF THE ORDINANCE DEPOSIT SCHEDULE, 944 WHICH ONLY REFLECTS CHANGES MADE TO CHAPTER 9 AS AMENDED BY ORDINANCE NO. \_\_\_\_\_

SCHEDULE "A"\*\*\*

| <i>Ordinance</i> | <i>Offense</i>          | <i>Deposit</i> | <i>Court Costs</i> | <i>Penalty Sur-charge 26%</i> | <i>Jail Sur-charge</i> | <i>Crime Lab and Drug</i> | <i>Court Support</i> | <i>Justice Info.</i> | <i>Total Cash Deposit</i> |
|------------------|-------------------------|----------------|--------------------|-------------------------------|------------------------|---------------------------|----------------------|----------------------|---------------------------|
| 9.07             | Disturbing the peace    | 100.00         | 25.00              | 26.00                         | 10.00                  | 13.00                     | 68.00                | 21.50                | 263.50                    |
| 9.08             | Trespassing on railroad | 150.00         | 25.00              | 39.00                         | 10.00                  | 13.00                     | 68.00                | 21.50                | 326.50                    |

\*\*\*Additions in text are indicated by underline and **bold-faced type**; deletions by ~~single strikethrough~~\*\*\*

NOTE: THIS IS A PARTIAL PRINT OUT OF THE ORDINANCE DEPOSIT SCHEDULE, 944 WHICH ONLY REFLECTS CHANGES MADE TO CHAPTER 9 AS AMENDED BY ORDINANCE NO. \_\_\_\_\_